
LAN WorkPlace 5 for MS Windows and DOS: Detailed Information

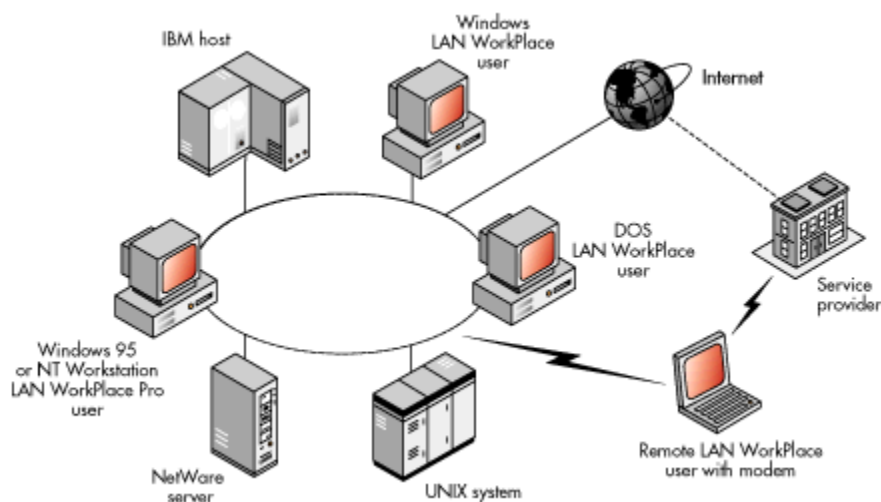
LAN WorkPlace 5 for MS Windows and DOS provides Windows and DOS users with easy, concurrent access to NetWare, UNIX, and Internet resources that use TCP/IP.

LAN WorkPlace provides a full suite of Windows Socket (WinSock) applications that lets you transparently access a wide range of information and services using TCP/IP, one of the worlds most widely used networking protocols. These applications include an Internet browser, terminal emulators, FTP file transfer, E-mail and enterprise printing capability, and more. And because LAN WorkPlace is compliant with the WinSock application programming interface, its Windows applications will run on any WinSock-compliant TCP/IP product--giving you more options for your TCP/IP connectivity.

Whether you choose to run LAN WorkPlace on standalone PCs or NetWare Clients, the LAN WorkPlace intuitive interface simplifies installation and configuration. When you install LAN WorkPlace, you can easily configure your PC for networked or remote use and save disk space by selecting only the applications and manuals you need. Complete online manuals and Help give you quick answers to your questions.

For NetWare users, LAN WorkGroup 5 offers the same features as LAN WorkPlace and adds centralized administration, workstation configuration, and TCP/IP address management--saving you time, trouble, and money. (For more details, see the LAN WorkGroup 5 product section)

Figure 1: LAN WorkPlace 5 for MS Windows and DOS gives you quick and easy access to NetWare, TCP/IP, and Internet resources.



Features

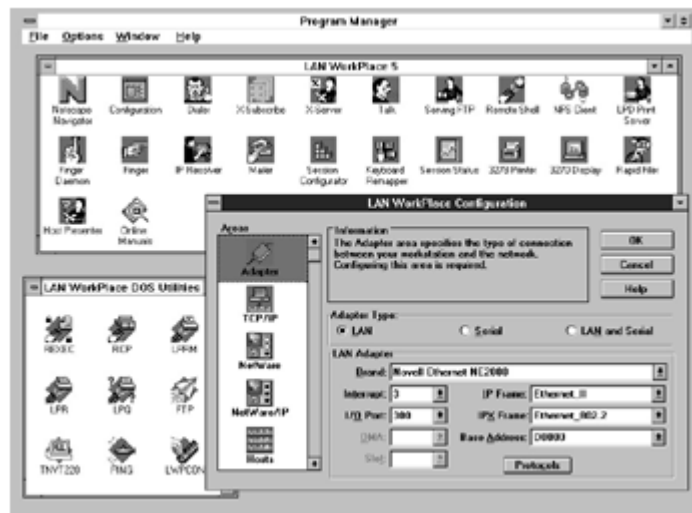
- Intuitive interface for easy installation and configuration
- Full-featured TCP/IP applications that offer the following services:
- Netscape Navigator Internet browser
- World-class terminal emulation

- File Transfer Protocol (FTP) and NFS file sharing
- E-mail interface for sending messages over TCP/IP networks
- X Window System application sharing
- Enterprise print services
- Full support for DOS users
- Support for remote users through standard phone lines
- Simple Network Management Protocol (SNMP) network management support

Intuitive Interface for Easy Installation and Configuration

LAN WorkPlace offers customizable installation, enabling you to save disk space by choosing which applications and manuals you want to install. A graphical configuration tool enables you to easily configure NetWare and IP connectivity for your PC, as well as your network adapter, through a single interface.

Figure 2: Even from remote locations, LAN WorkPlace gives you quick access to information with a full suite of Windows and DOS TCP/IP applications.



Netscape Navigator Internet Browser

LAN WorkPlace 5 includes Netscape Navigator, the market-leading World Wide Web browser. Netscape Navigator guides you through the ocean of information on the Internet, giving you point-and-click access to text, graphics, sound, and video. Netscape Navigator also includes a news reader, which enables you to participate in any of the thousands of news groups on the Internet.

Full-Featured Terminal Emulation

LAN WorkPlace provides Host Presenter™, a world-class terminal emulator that supports as many as 10 Telnet sessions and enables Windows users to emulate VT220, VT52, or VT100 terminals. Host Presenter supports most international character sets and includes an extensive script language for scripting

automation. It also supports window resizing. In addition, the integrated Windows TN3270 client enables Windows users to easily log in to IBM mainframes through Telnet.

FTP and NFS File Sharing

Rapid Filer™, an FTP client, enables Windows users to transfer files and directories between NetWare, UNIX, DOS, and any other FTP server with drag-and-drop ease. LAN WorkPlace includes FTP servers for both Windows and DOS, so other users can access files from your machine. The Windows FTP server supports directory copy and automatic file type determination.

The integrated NFS Client lets you transparently access files on any host supporting the NFS standard. By enabling you to directly mount NFS volumes as virtual hard disks, NFS Client makes remote NFS files appear as though they were stored on your hard disk. NFS Client provides high performance and reliability while using only a small amount of RAM.

E-Mail for Sending Messages Over TCP/IP Networks

LAN WorkPlace Mailer for Windows provides an easy-to-use interface for sending messages and files over TCP/IP networks, including the Internet. Remote users can read and write mail messages offline and connect later to send and receive them.

X-Server for X Window Application Sharing

LAN WorkPlace includes X-Server, which enables you to run X Window System applications on remote hosts (over both IP and IPX) right from your Windows workstation. X-Server supports most connection protocols and lets you create scripts and Windows icons for frequently used X-based applications.

Enterprise Print Services

LAN WorkPlace 5 for MS Windows and DOS provides company-wide print services. The Windows Line Printer Daemon enables UNIX users to send print jobs to PC-based printers; similarly, the Windows Line Printer Requester (LPR) enables LAN WorkPlace users to send jobs to UNIX-attached printers. DOS users may also print to UNIX-attached printers by redirecting their printer ports to UNIX print queues.

Full Support for DOS Users

LAN WorkPlace 5 offers complete DOS support, including Ping, TNVT220, Talk, FTP, FTPD, XPC, the R-Utilities (rsh, rexec, and rpr), Finger, LPR, LPQ, and LPRM.

Supports Remote Users Through Standard Phone Lines

LAN WorkPlace provides support for remote computing, so you can work wherever you choose and still access NetWare, UNIX, and TCP/IP resources. It provides a consistent interface when you remotely access TCP/IP services, so you can access information as though you are working in your office, even when you are halfway around the world.

LAN WorkPlace includes Dialer for Windows, making it easy to connect to your network from virtually any location. Dialer supports the industry-standard Serial Line Internet Protocol and Point-to-Point Protocol drivers, so you can connect remotely to TCP/IP-supported networks over standard phone lines. Dialer establishes your remote network connections on demand and answers callbacks automatically, letting you

work uninterrupted.

Includes SNMP Network Management Support

LAN WorkPlace includes several features that enable you to manage the flow of information over networks. It uses SNMP, so network management workstations can monitor the TCP/IP activity of machines running LAN WorkPlace. LWPCON enables you to view the status of TCP/IP protocols on a local PC and on remote machines. IP Resolver translates networked computer names and logical IP addresses, then tests connectivity using Ping. A failed router recovery option automatically selects alternate routers when your primary router has failed.

Hardware Requirements

- 386-based PC or above
- 4MB of RAM (minimum)
- 5MB of free disk space (minimum) for DOS users or 8MB of free disk space for Windows and DOS users (more space is required to install all files and online documentation)
- CD-ROM drive or 3.5-inch diskette drive
- An Ethernet, token-ring, PCMCIA, Fiber Distributed Data Interface (FDDI), or ARCnet adapter with corresponding Open Data-Link Interface (ODI) driver

Software Requirements

- Windows 3.1 or above (optional)
- PC-DOS or MS-DOS 3.3 or above, DR DOS® 6.0 or above, or Novell D™ 7.0

Implementation

LAN WorkPlace 5 for MS Windows and DOS installs directly on your desktop computer and supports both 3.5-inch diskette and CD-ROM installation. The products modular architecture enables you to optimize RAM usage; you can load and unload drivers as needed without having to reboot.

LAN WorkPlace supports a wide range of networking hardware by using Novells ODI technology. LAN WorkPlace supports most Ethernet, token-ring, PCMCIA, FDDI, and ARCnet adapters with corresponding ODI drivers. It supports the TCP/IP and NetWare IPX/SPX protocols concurrently on Ethernet, token-ring, FDDI, and ARCnet networks. LAN WorkPlace also supports networking software that implements the Network Device Interface Specification driver specification, so it is the ideal choice for any networking environment.

Because the NetWare 3 and NetWare 4 NOSs can act as IP routers, LAN WorkPlace can be used with a 386-, 486-, or Pentium-based NetWare NOS to connect NetWare clients on ARCnet and token-ring LANs to TCP/IP hosts on Ethernet segments.

The RFC 1001/RFC 1002 NetBIOS protocol is included, which supports NetBIOS applications through TCP/IP.

LAN WorkPlace also includes the IPTunnel ODI Driver, which encapsulates the NetWare IPX/SPX protocols in UDP/IP for connection to remote NetWare 3.11 or above servers. This enables you to access

NetWare IPX protocol resources over a TCP/IP internetwork.

Specifications

LAN WorkPlace 5 for MS Windows and DOS supports the following U.S. Department of Defense IP standards:

Address Resolution Protocol: RFC 826

Bootstrap Protocol: RFCs 951, 1395

Domain Name System Resolver: RFCs 1034, 1035

Finger: RFC 1288

File Transfer Protocol: RFC 959

Internet Control Message Protocol: RFCs 792, 950

IP Broadcast Datagrams: RFC 919 IP

Broadcast Datagrams with Subnets: RFC 922 IP-IEEE (Internet Protocol on IEEE 802): RFC 1042

IP on ARCnet: RFC 1201

IP on Ethernet: RFC 894

IP: RFCs 791, 1349

IP Subnet Extension: RFC 950

IPX over IP Tunneling: RFC 1234

Line Printer Daemon Protocol: RFC 1179

Management Information Base: RFC 1213

NetBIOS Service Protocol on TCP/IP: RFCs 1001, 1002

NFS Protocol: RFC 1094

Reverse Address Resolution Protocol: RFC 903

Remote Procedure Call: RFC 1057

Serial Line Internet Protocol: RFC 1055

Simple Network Management Protocol: RFC 1157

TCP: RFC 793 (0-64 sockets)

Telnet Protocol: RFC 854

Trivial File Transfer Protocol: RFC 783

User Datagram Protocol: RFC 768 (0-32 sockets)

Van Jacobsen TCP/IP Header Compression: RFC 1144

Ordering Information

You can order LAN WorkPlace 5 for MS Windows and DOS from any Novell Authorized, Gold, or Platinum Partner. For more information, contact your local Novell office or call Novells Pre Sale Product Information Group at 1-801-861-5588. Or, in the United States and Canada, call 1-800-NETWARE (1-800-638-9273). You may also visit Novells World Wide Web site at <http://www.novell.com> or use Novells Product Information FaxBack system at 1-800-861-2772.