

User guide

Novell[®] Client[™] for Linux

2.0 SP3

November 2009

www.novell.com



Legal Notices

Novell, Inc. makes no representations or warranties with respect to the contents or use of this documentation, and specifically disclaims any express or implied warranties of merchantability or fitness for any particular purpose. Further, Novell, Inc. reserves the right to revise this publication and to make changes to its content, at any time, without obligation to notify any person or entity of such revisions or changes.

Further, Novell, Inc. makes no representations or warranties with respect to any software, and specifically disclaims any express or implied warranties of merchantability or fitness for any particular purpose. Further, Novell, Inc. reserves the right to make changes to any and all parts of Novell software, at any time, without any obligation to notify any person or entity of such changes.

Any products or technical information provided under this Agreement may be subject to U.S. export controls and the trade laws of other countries. You agree to comply with all export control regulations and to obtain any required licenses or classification to export, re-export or import deliverables. You agree not to export or re-export to entities on the current U.S. export exclusion lists or to any embargoed or terrorist countries as specified in the U.S. export laws. You agree to not use deliverables for prohibited nuclear, missile, or chemical biological weaponry end uses. See the [Novell International Trade Services Web page \(http://www.novell.com/info/exports/\)](http://www.novell.com/info/exports/) for more information on exporting Novell software. Novell assumes no responsibility for your failure to obtain any necessary export approvals.

Copyright © 2009 Novell, Inc. All rights reserved. No part of this publication may be reproduced, photocopied, stored on a retrieval system, or transmitted without the express written consent of the publisher.

Novell, Inc. has intellectual property rights relating to technology embodied in the product that is described in this document. In particular, and without limitation, these intellectual property rights may include one or more of the U.S. patents listed on the [Novell Legal Patents Web page \(http://www.novell.com/company/legal/patents/\)](http://www.novell.com/company/legal/patents/) and one or more additional patents or pending patent applications in the U.S. and in other countries.

Novell, Inc.
404 Wyman Street, Suite 500
Waltham, MA 02451
U.S.A.
www.novell.com

Online Documentation: To access the latest online documentation for this and other Novell products, see [the Novell Documentation Web page \(http://www.novell.com/documentation\)](http://www.novell.com/documentation).

Novell Trademarks

For Novell trademarks, see the [Novell Trademark and Service Mark list \(http://www.novell.com/company/legal/trademarks/tmlist.html\)](http://www.novell.com/company/legal/trademarks/tmlist.html).

Third-Party Materials

All third-party trademarks are the property of their respective owners.

Contents

About This Guide	7
1 Using the Novell Client Tray Application	9
1.1 Starting and Stopping the Novell Client Tray Application	9
1.2 Logging In to the Network	10
1.2.1 Running Novell Login Scripts During Login	11
1.3 Logging Out of a Network Location (Server or Tree)	12
1.4 Viewing Your Network Connections	12
1.5 Changing Your Network Password	13
1.6 Mapping Network Directories	13
1.7 Disconnecting a Mapped Directory	14
1.8 Editing Your Login Script	14
1.9 Configuring the Novell Client	15
1.10 Viewing Novell Client Version Information	15
2 Using Novell Utilities	17
2.1 Assigning Rights to Volumes, Files, and Directories	17
2.2 Setting Inherited Rights and Filters	19
2.3 Viewing Object Properties	20
2.3.1 Viewing File and Folder Properties	20
2.3.2 Viewing Volume Properties	22
2.4 Salvaging Deleted Files	23
2.5 Purging Deleted Files	24
2.6 Sending Messages to Users	25
2.7 Sending Messages to the System Console	26
A Documentation Updates	27
A.1 September, 2009	27
A.2 August, 2008	27

About This Guide

This guide describes how to use the Novell® Client™ for Linux features available in the Novell Client tray application. This guide contains the following sections:

- ♦ Chapter 1, “Using the Novell Client Tray Application,” on page 9
- ♦ Chapter 2, “Using Novell Utilities,” on page 17

Audience

This guide is intended for users of the Novell Client for Linux.

Feedback

We want to hear your comments and suggestions about this manual and the other documentation included with this product. Please use the User Comments feature at the bottom of each page of the online documentation, or go to www.novell.com/documentation/feedback.html and enter your comments there.

Documentation Updates

For the latest version of this documentation, see the [Novell Client online documentation \(http://www.novell.com/documentation/linux_client/index.html\)](http://www.novell.com/documentation/linux_client/index.html).

Additional Documentation

For information on installing the Novell Client for Linux, see the “[Novell Client 2.0 SP3 for Linux Installation Quick Start](#).”

For information on administering the Novell Client for Linux and for information regarding man pages, see the [Novell Client 2.0 SP3 for Linux Administration Guide](#).

For information on login scripts, see the [Novell Login Scripts Guide](#).

Documentation Conventions

In this documentation, a greater-than symbol (>) is used to separate actions within a step and items within a cross-reference path.

A trademark symbol (®, ™, etc.) denotes a Novell trademark. An asterisk (*) denotes a third-party trademark.

Using the Novell Client Tray Application

1

Novell® Client™ for Linux workstation and server extends the capabilities of Linux desktops and servers by providing access to NetWare® and Open Enterprise Server (OES). When installed on workstations and servers, the Client lets you enjoy the full range of Novell services such as authentication via Novell eDirectory™, network browsing and service resolution, and secure and reliable file system access. The Client supports the Novell traditional NCP™ protocol.

Novell Client 2.0 SP3 for Linux supports workstations and servers running either of the following:


- ♦ SUSE® Linux Enterprise Desktop 10 SP3 (32-bit and 64-bit)
- ♦ Novell Open Enterprise Server 2 SP2

For information on installing the Novell Client for Linux, see the “[Novell Client 2.0 SP3 for Linux Installation Quick Start](#).”

This section contains the following information:

- ♦ [Starting and Stopping the Novell Client Tray Application \(page 9\)](#)
- ♦ [Logging In to the Network \(page 10\)](#)
- ♦ [Logging Out of a Network Location \(Server or Tree\) \(page 12\)](#)
- ♦ [“Viewing Your Network Connections” on page 12](#)
- ♦ [Changing Your Network Password \(page 13\)](#)
- ♦ [Mapping Network Directories \(page 13\)](#)
- ♦ [Disconnecting a Mapped Directory \(page 14\)](#)
- ♦ [Editing Your Login Script \(page 14\)](#)
- ♦ [Configuring the Novell Client \(page 15\)](#)
- ♦ [Viewing Novell Client Version Information \(page 15\)](#)

1.1 Starting and Stopping the Novell Client Tray Application

You can use the Novell Client tray application to access many of the Novell Client for Linux features. Simply click the red N icon () located in the tray.


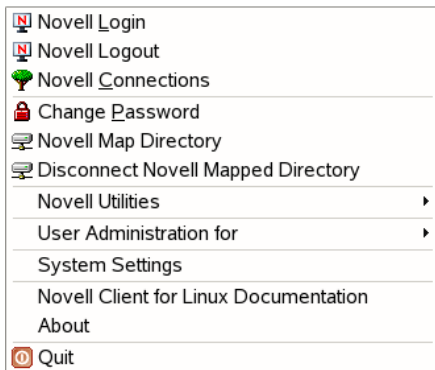


Click  to see the following menu:

Figure 1-1 The Novell Client Tray Application Menu



If you want to stop the Novell Client tray application from appearing on the tray, click  > *Quit*.


To restart the Novell Client tray application (or if for some reason the red N icon () does not appear in your tray), use one of the following methods:

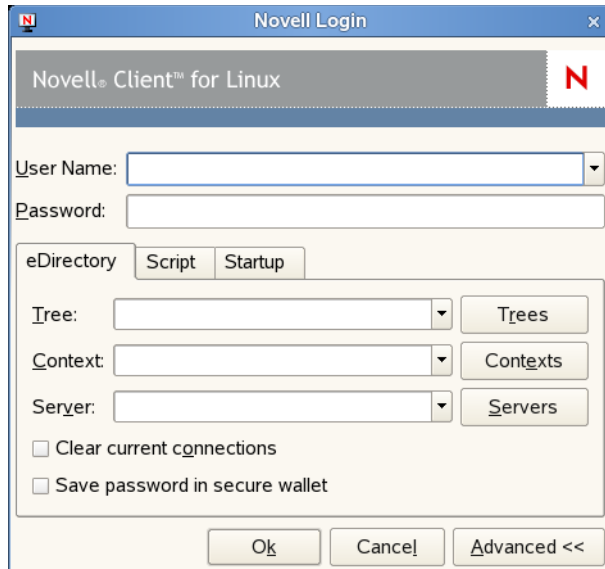
- ♦ **GNOME:** Click *Computer > More Applications > Novell Tray*.
- ♦ **KDE:** Click the menu button > *Novell Tray*.
- ♦ Enter the following command in a terminal window:

```
/opt/novell/ncl/bin/ncl_tray
```

1.2 Logging In to the Network

When you log in to the network, you gain access to directories and files as well as other services provided by network servers. Your network administrator should provide you with the required information so that you can log in.

- 1 Use one of the following methods to open the Novell Login dialog box:
 - ♦ Click  > *Novell Login*.
 - ♦ **GNOME:** Click *Computer > More Applications > Novell Login*.
 - ♦ **KDE:** Click the menu button > *Novell Login*.
- 2 Enter your username and password, then click *Advanced*.



- 3 Specify the tree, context, and server information for the server you want to connect to.
You can type a DNS name or an IP address for the server. See your network administrator for this information.
If your network has SLP set up, you can browse a list of available trees, contexts, and servers by clicking their associated buttons.
- 4 (Optional) To clear any existing connections to servers before logging in, select *Clear current connections*.
- 5 (Optional) To store your eDirectory password in your desktop's secure wallet program, select *Save password in secure wallet*.
- 6 (Optional) To run login scripts during this login session, click the *Script* tab, then select the options needed to run the login scripts.
For more information on login scripts, see [Section 1.2.1, "Running Novell Login Scripts During Login,"](#) on page 11.
- 7 (Optional) To configure integrated login, click the *Startup* tab, make sure the *Run Novell Client Login at Session Startup* is selected (it is selected by default), then click *Save profile after successful login*.
You must have the *User Name* and *Password* fields and the *Tree* and *Context* fields on the *eDirectory* tab filled out for this to be saved, and you must save your profile in order for an integrated login to happen at the next session startup.
- 8 Click *OK* to log in to the server specified in [Step 3](#).

1.2.1 Running Novell Login Scripts During Login

When you successfully log in to the network, one or more login scripts are executed. Login scripts can be used to automatically map drives and search drives to directories, display messages, set environment variables, and execute programs or menus.



You can specify whether login scripts are run, whether the results are displayed, and whether the login window is automatically closed during login. In addition, if the login script uses the [%2, %3, %4, or %5 variable](#), you can set these variables by clicking the *Variables* button.

Your network administrator should provide information on whether to use login scripts and, if so, which login scripts to use.

For additional information on setting up login scripts, see the *Novell Login Scripts Guide*.


1.3 Logging Out of a Network Location (Server or Tree)

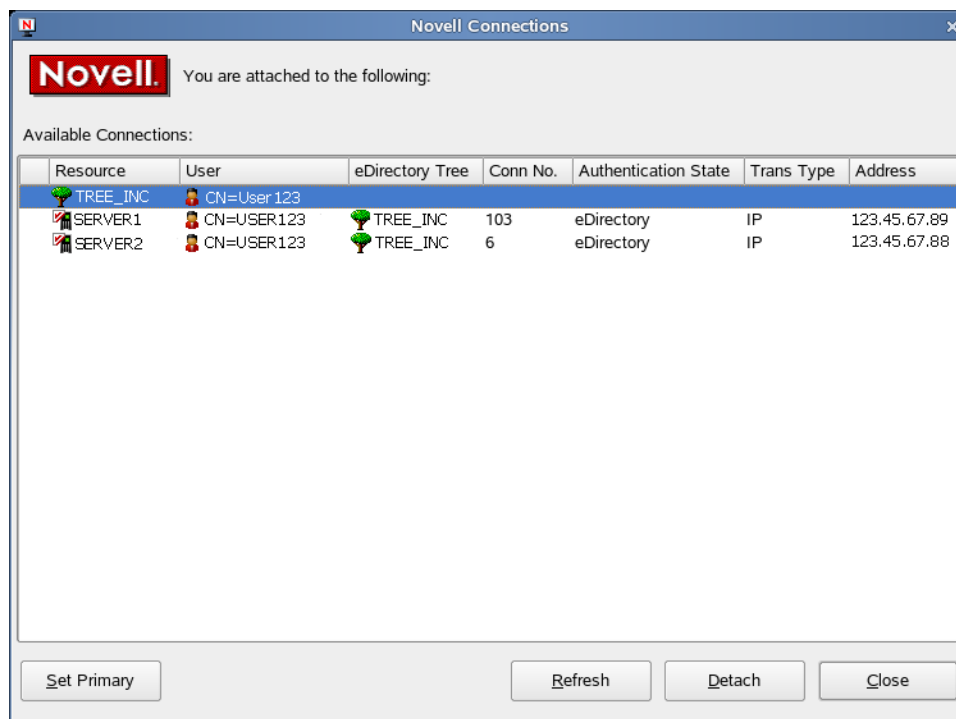
You can log out of a network location in either of the following ways:

- To log out of all existing connections, click  > *Novell Logout* > *Logout*.
- If you are logged in to multiple trees and want to log out of a specific server or tree, click  > *Novell Connections*, select the tree or server that you want to log out of, then click *Detach*.

1.4 Viewing Your Network Connections

Novell Connections allows you to see what servers and trees you are logged in to. You can refresh connections, set a specific tree as your primary connection, or log out of a tree or server.

- 1 Click  > *Novell Connections*.




- 2 Do any of the following:
 - **To set a connection as the primary connection:** Select the server you want to set as the primary connection, then click *Set Primary*.
 - **To refresh a connection:** Select the connection that you want to refresh, then click *Refresh*.

- ♦ **To disconnect from a connection:** Select the connection you want to detach from, then click *Detach*.

3 Click *Close*.


1.5 Changing Your Network Password

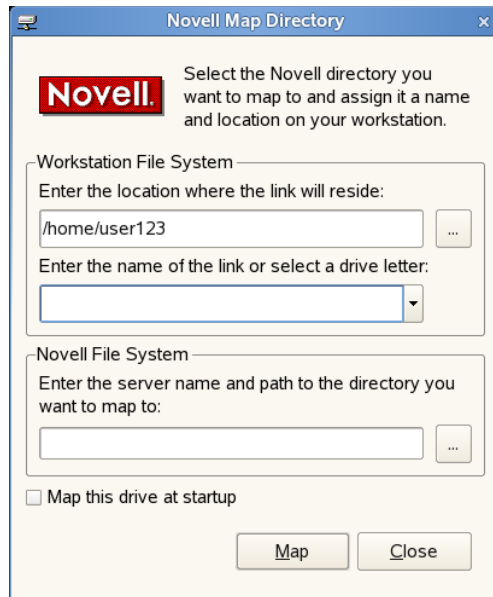
To change your eDirectory password:

- 1 Click  > *Change Password*.
- 2 Type your current password in the *Old password* field.
- 3 Type your new password in the *New password* field.
- 4 Retype the new password in the *Confirm* field.
- 5 Click *OK*.

1.6 Mapping Network Directories

When you map a directory, you create a symbolic link or shortcut to a path on the network and assign it a name and location on your workstation or server. After the drive is mapped, you can use the symbolic link to access the network resource, if you have sufficient rights on that resource. You can map to a specific folder on the resource or to the root of the resource.

- 1 Click  > *Novell Map Directory*.



- 2 Specify the path on the local file system where the symbolic link to the network resource is to be created (using forward slashes).

For example: `/home/user123`

You can also click the *Browse* button and select the location on the local file system where the symbolic link is to be created.

If no location is specified, the symbolic link is created in the *Map Link Default Location* configured in the *System Settings* or in your home directory.

- 3 Type the name of the symbolic link to be created, or select a letter from the drop-down list (if you want to use a single letter as the name for the link).
- 4 In the *Novell File System* field, type the server name and the path to the directory you want to map.

The path can be in any of the following forms:


- ♦ `//server/volume/path`
 - ♦ `server/volume:`
 - ♦ `server/volume:/path`
 - ♦ `.directory_object_name_fully_distinguished_eDirectory_path` (such as a cluster volume, for example: `my_dir.usrs.accnt.mycompany`)

You can also click the *Browse* button and locate the directory you want to map.

- 5 (Optional) To reestablish this drive mapping the next time you log in, click *Map this drive at startup*.
- 6 Click *Map*.

The mapped drive appears in your home directory (by default) or in the directory you specified in [Step 2](#).


1.7 Disconnecting a Mapped Directory

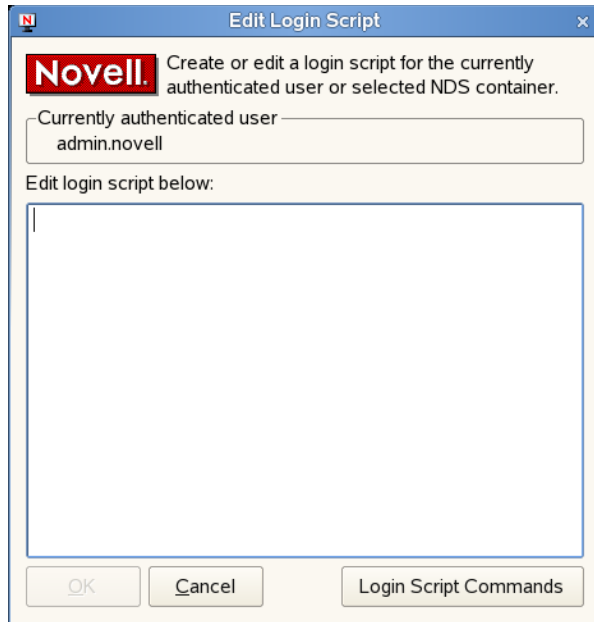
- 1 Click  > *Disconnect Novell Mapped Directory*.
- 2 Select the mapped directory that you want to disconnect from, then click *Disconnect*.

1.8 Editing Your Login Script

This option lets you edit or create the personal login script that runs when you log in.

Check with your network administrator before creating or changing a login script. Your administrator can tell you whether you should create a personal login script on your network, and can provide information on script syntax.

- 1 Click  > *User Administration for Name_of_Tree* > *Edit Login Script*.




2 Make the changes you want to the login script.

For more information on login scripts, click *Login Script Commands* to open the *Novell Login Scripts Guide*.

3 Click *OK*.

1.9 Configuring the Novell Client

To configure the Novell Client, run the Novell Client Configuration Wizard. It lets you configure file browser, protocol, login, tray application, and OpenSLP settings.

1 Click  > *System Settings*.

2 If you are not logged in as `root`, type the `root` password, then click *OK*.

3 Select the Client settings you want to configure, then click *Start Wizard*.

4 Follow the instructions in the left panel to configure the Novell Client settings.

5 When you are finished, click *Finish*.


6 (Conditional) If you made changes to the Protocol Settings page or the Service Location Protocol (OpenSLP) Settings page, reboot the machine for those changes to take effect.

For more information, see “[Using the Novell Client Configuration Wizard](#)” in the *Novell Client for Linux Administration Guide*.

1.10 Viewing Novell Client Version Information

To obtain version information for the Novell Client in the Novell Client tray application, click *About*. This window also contains information on the specific packages loaded, including their status, version, and release information.

You can also link to the [Novell Client for Linux product page \(http://www.novell.com/products/clients/linux/overview.html\)](http://www.novell.com/products/clients/linux/overview.html) from the About dialog box.

- 1 Click  > *About*.
- 2 Click the *Packages* tab to view information on the Novell Client for Linux packages that are loaded, including status, version, and release information.
- 3 Click the *Kernel* tab to view information on the kernel and novfs.
- 4 Click *OK*.

Using Novell Utilities


2

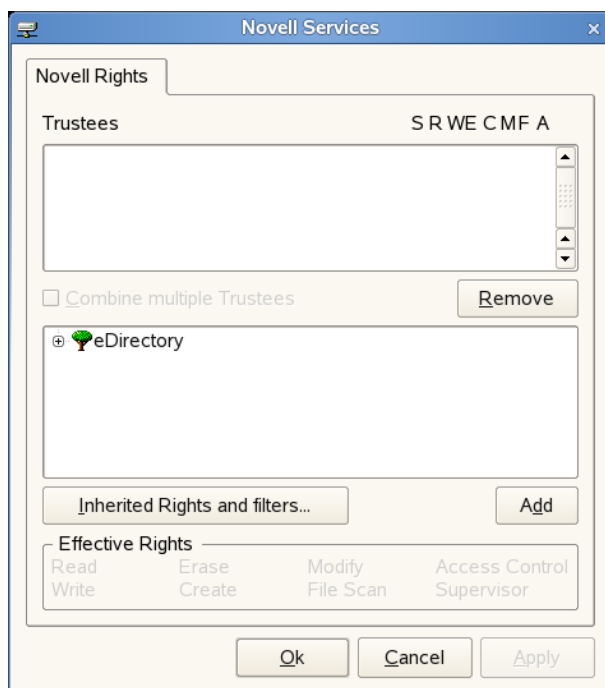
You can access various Novell® utilities by selecting the *Novell Utilities* option on the Novell Client™ tray application menu. The options on the submenu let you do the following:

- ♦ [Assigning Rights to Volumes, Files, and Directories \(page 17\)](#)
- ♦ [Setting Inherited Rights and Filters \(page 19\)](#)
- ♦ [Viewing Object Properties \(page 20\)](#)
- ♦ [Salvaging Deleted Files \(page 23\)](#)
- ♦ [Purging Deleted Files \(page 24\)](#)
- ♦ [Sending Messages to Users \(page 25\)](#)
- ♦ [Sending Messages to the System Console \(page 26\)](#)

2.1 Assigning Rights to Volumes, Files, and Directories

The Trustee Rights utility lets you display and give rights to volumes, files, and directories on a Novell server. A trustee is an object (such as a User object, Group object, Organizational Role objects, or container object) that has (or will have) rights to a volume, directory, or file. Trustee assignments allow you to assign ownership, set permissions, and monitor user access. You must have the [Access Control \(http://www.novell.com/documentation/nw65/nss_enu/data/bri5796.html#bs3fjo7\)](http://www.novell.com/documentation/nw65/nss_enu/data/bri5796.html#bs3fjo7) right to change trustee assignments.

- 1 Click  > *Novell Utilities* > *Trustee Rights*.
- 2 Select the folder or file you want to set trustee rights for, then click *OK*.



- 3 To add a trustee, select the object in the tree diagram, click *Add*, then set the rights for this user by selecting the boxes under the letters on the right.

For each trustee in the list, there is a set of eight check boxes, one for each right that can be assigned. If a check box is checked, the trustee has that right. To assign or unassign rights, use the check boxes in the dialog box.

The following rights can be set for each trustee:

- ♦ **Read:** For a directory, grants the right to open files in the directory and read the contents or run the programs. For a file, grants the right to open and read the file.
 - ♦ **Write:** For a directory, grants the right to open and change the contents of files in the directory. For a file, grants the right to open and write to the file.
 - ♦ **Erase:** Grants the right to delete the directory or file.
 - ♦ **Create:** For a directory, grants the right to create new files and directories in the directory. For a file, grants the right to create a file and to salvage a file after it has been deleted.
 - ♦ **Modify:** Grants the right to change the attributes or name of the directory or file, but does not grant the right to change its contents (changing the contents requires the Write right).
 - ♦ **File Scan:** Grants the right to view directory and file names in the file system structure, including the directory structure from that file to the root directory.
 - ♦ **Access Control:** Grants the right to add and remove trustees for directories and files and modify their trustee assignments and Inherited Rights Filters.
 - ♦ **Supervisor:** Grants all rights to the directory or file and any subordinate items. The Supervisor right can't be blocked by an Inherited Rights Filter. Users with this right can grant or deny other users rights to the directory or file.
- 4 To remove a trustee, select one or more trustees in the Trustees list, then click *Remove*.
 - 5 To view a list of rights and filters inherited by this volume, click *Inherited Rights and filters*.
 - 6 To apply the same trustee assignments to a group of selected files, click *Combine multiple Trustees*.

This check box is available only if you're viewing the rights for multiple files or directories. At least one of the files or directories must have at least one trustee assignment. The trustees and rights shown are the combined trustees and rights for all of the files. If you check *Combine multiple Trustees*, the trustee assignments that are chosen apply to all of the selected files after you click *OK* or *Apply*.


For example, Kim is a trustee of file_a and file_b. Kim has Read, File Scan, and Access Control rights for file_a and Read and File Scan rights for file_b. If you select file_a and file_b and view their properties, Kim is shown as a trustee with Read, File Scan, and Access Control rights.

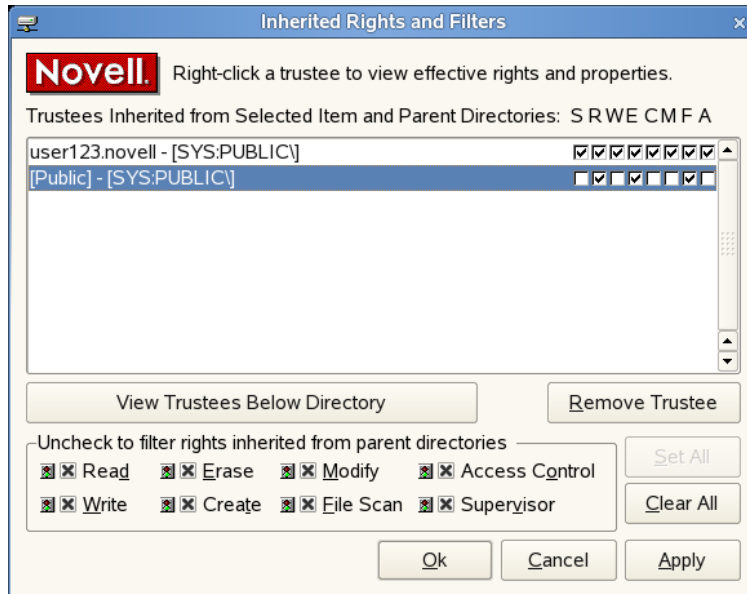
If you select *Combine multiple Trustees* and then click *OK*, Kim is given the Access Control right for file_b. Therefore, Kim now has Read, File Scan, and Access Control rights for both file_a and file_b.

- 7 Click *Apply*, then click *OK* when you are finished modifying trustee rights.

2.2 Setting Inherited Rights and Filters

The Inherited Rights and Filters utility lets you view and set information about trustees and rights. Rights assignments on eDirectory™ containers can be inheritable or non-inheritable, but all rights assignments on directories are inheritable. You can block such inheritance on individual subordinate items so that the rights aren't effective on those items, no matter who the trustee is. One exception is that the Supervisor right can't be blocked.

- 1 Click  > *Novell Utilities* > *Inherited Rights and Filters*.
- 2 Select the folder or file you want to view or set inherited rights and filters for, then click *OK*.



The main part of this dialog box is the list of trustees inherited from the selected item and its parent folders.

- 3 To assign or unassign rights, use the check boxes to the right of a trustee.

For each trustee in the list, there is a set of eight check boxes, one for each right that can be inherited. If a check box is selected, the trustee has that right.

The following rights can be set for each trustee:

- ♦ **Read:** For a directory, grants the right to open files in the directory and read the contents or run the programs. For a file, grants the right to open and read the file.
- ♦ **Write:** For a directory, grants the right to open and change the contents of files in the directory. For a file, grants the right to open and write to the file.
- ♦ **Erase:** Grants the right to delete the directory or file.
- ♦ **Create:** For a directory, grants the right to create new files and directories in the directory. For a file, grants the right to create a file and to salvage a file after it has been deleted.
- ♦ **Modify:** Grants the right to change the attributes or name of the directory or file, but does not grant the right to change its contents (changing the contents requires the Write right).
- ♦ **File Scan:** Grants the right to view directory and file names in the file system structure, including the directory structure from that file to the root directory.


- ♦ **Access Control:** Grants the right to add and remove trustees for directories and files and modify their trustee assignments and Inherited Rights Filters.
 - ♦ **Supervisor:** Grants all rights to the directory or file and any subordinate items. The Supervisor right can't be blocked by an Inherited Rights Filter. Users with this right can grant or deny other users rights to the directory or file.
- 4 To see a list of trustees for subfolders of the currently selected folder, click *View Trustees Below Directory*.
A list of all the users and their rights to each subfolder appears. You can modify or remove rights from this list.
 - 5 To view a trustee's current effective rights (taking into account the Inheritance filter), right-click a trustee name, then click *Current Effective Rights*.
Users can receive rights in a number of ways, such as explicit trustee assignments, inheritance, and security equivalence. Rights can also be limited by Inherited Rights Filters and changed or revoked by lower trustee assignments. The net result of all these actions (the rights a user can employ) are called *effective rights*.
 - 6 To view a trustee's properties (such as if they have the rights to modify inherited rights at this level), right-click a trustee name, then click *Properties*.
 - 7 Click *Apply*, then click *OK* when you are finished modifying inherited rights and filters.

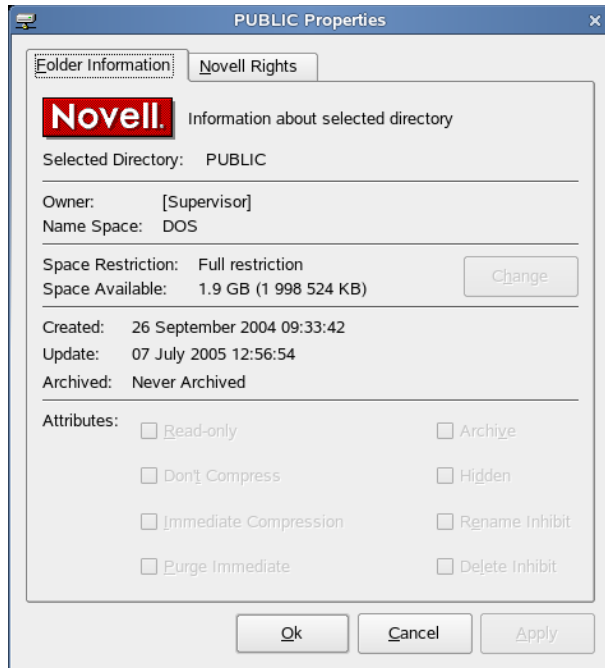
2.3 Viewing Object Properties

The Object Properties utility lets you view the property pages for a selected object. The property pages let you see information and statistics about that object. If you have sufficient rights, you can set attributes for that object.

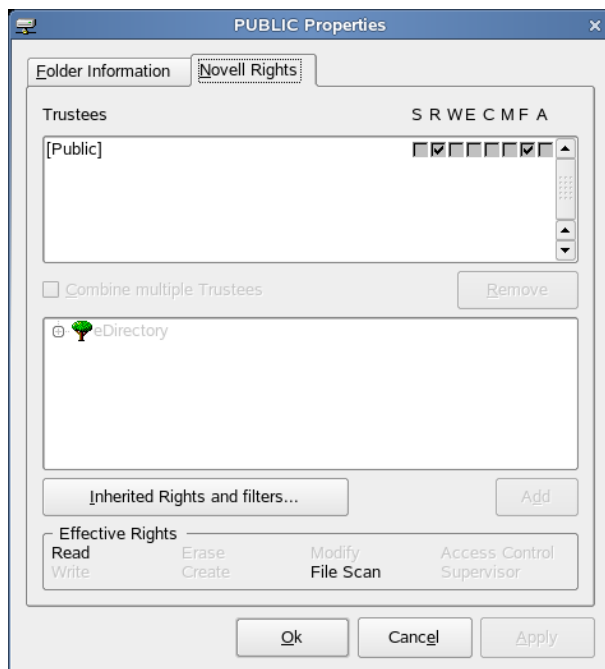
- ♦ [Section 2.3.1, “Viewing File and Folder Properties,” on page 20](#)
- ♦ [Section 2.3.2, “Viewing Volume Properties,” on page 22](#)

2.3.1 Viewing File and Folder Properties

- 1 Click  > *Novell Utilities* > *Object Properties*.
- 2 Select the Novell file or folder whose properties you want to see, then click *OK*.
- 3 On the *Folder Information* page, you can view the owner of the folder, the name spaces enabled on the folder, the amount of disk space available to you, the date the folder was created, updated, and archived, and any attributes set on the folder.



- 4 If you have rights to modify this object and need to make changes, select the properties you want to changed.
- 5 To view the eDirectory rights associated with this object, click the *Novell Rights* tab.




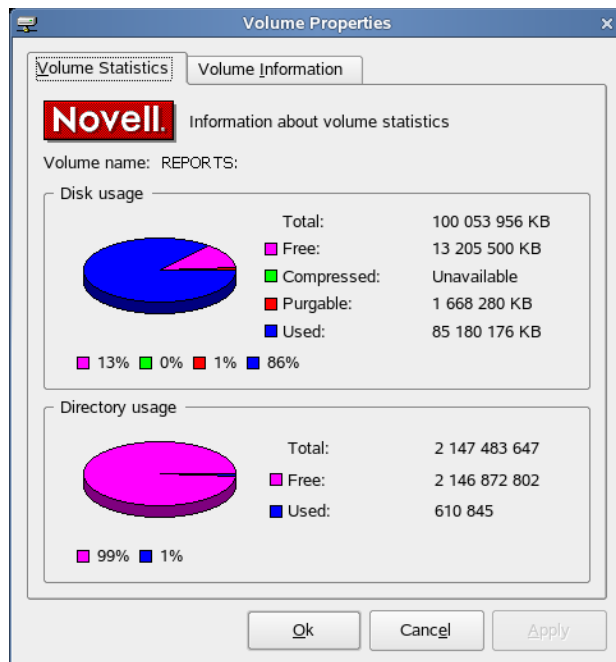
If you have Access Control rights and need to make changes to the Novell rights associated with this object, see **“Managing File Security”** in the *Novell Client for Linux Administration Guide* for specific steps on setting Novell file rights.

If you do not have Access Control rights, your effective rights to the file appear in the *Effective Rights* box. You cannot change these rights.

- 6 Click *Apply*, then click *OK* when you are finished viewing or modifying the object's properties.

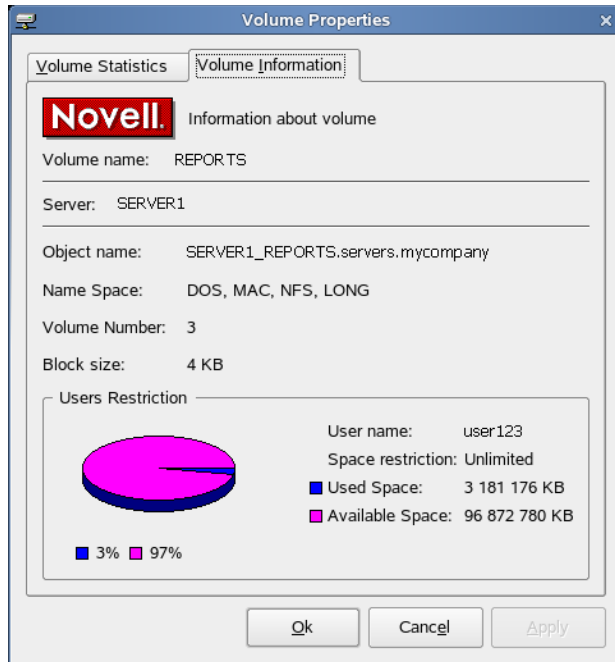
2.3.2 Viewing Volume Properties

- 1 Click  > *Novell Utilities* > *Object Properties*.
- 2 Select the Novell volume whose properties you want to see, then click *OK*.
- 3 On the *Volume Statistics* page, you can view information about the total amount of used and available disk space on the volume and information about the number of used and available directory entries on the volume.



The information you can view includes the following:

- ♦ **Disk Usage Graph:** Pie chart representing the disk usage of the selected volume. The chart includes the amount of unused space on the volume, the used disk space that is compressed on the volume, the disk space available for use after marked files are purged, and the used disk space on the volume (not including compressed or purgeable space).
 - ♦ **Directory Usage Graph:** Pie chart representing the number of used entries compared to the number of available entries on the volume.
- 4 To view other information about the Novell volume, click the *Volume Information* tab.



The information you can view includes the following:


- ♦ **Volume Name:** Name of the volume. The volume name corresponds to the name of the disk (or label) for local disks, such as diskettes or workstation hard disks.
- ♦ **Server:** Server where the volume is located.
- ♦ **Object Name:** Volume's eDirectory object name.
- ♦ **Name Space:** Name spaces enabled on the volume.
- ♦ **Volume Number:** Number of the volume. The volume number can be useful in diagnosing errors.
- ♦ **Block Size:** Block size of the volume (in kilobytes).
- ♦ **User Restriction Graph:** Amount of disk space you are using and the amount of remaining disk space that you can use. *Space Restriction* is the disk space available to you.

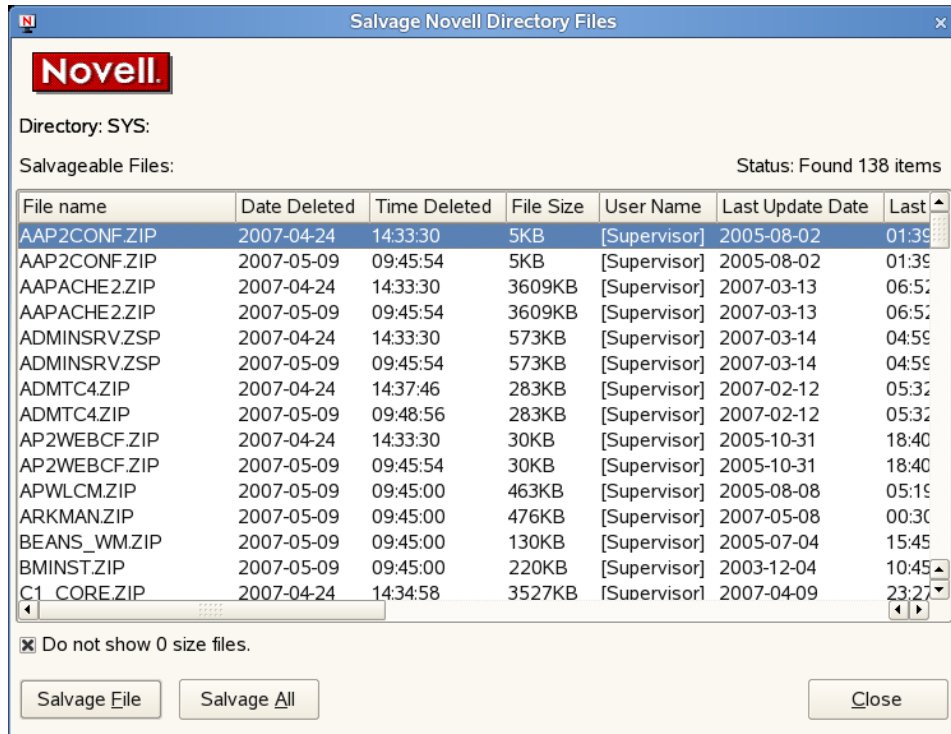
5 Click *Apply*, then click *OK* when you are finished viewing the object's properties.

2.4 Salvaging Deleted Files

The Salvage utility lets you recover deleted files and directories from Novell file systems. Files that have been purged cannot be recovered.

IMPORTANT: You cannot salvage files or directories from an OES for Linux* Reiser volume.

- 1 Click  > *Novell Utilities* > *Salvage Deleted Files*.
- 2 Select the folder where the files you want to recover are located, then click *OK*.



3 Select the files you want to recover.

To display files with 0 bytes, deselect *Do not show 0 size files* (selected by default). This refreshes the display to show all deleted files, no matter the size.

4 Click *Salvage File*.

To salvage all deleted files in the folder, click *Salvage All*.

5 Click *Close*.

2.5 Purging Deleted Files

The Purge utility lets you purge deleted files and directories from Novell file systems. Deleted files are purged from a volume when one of the following events occurs:

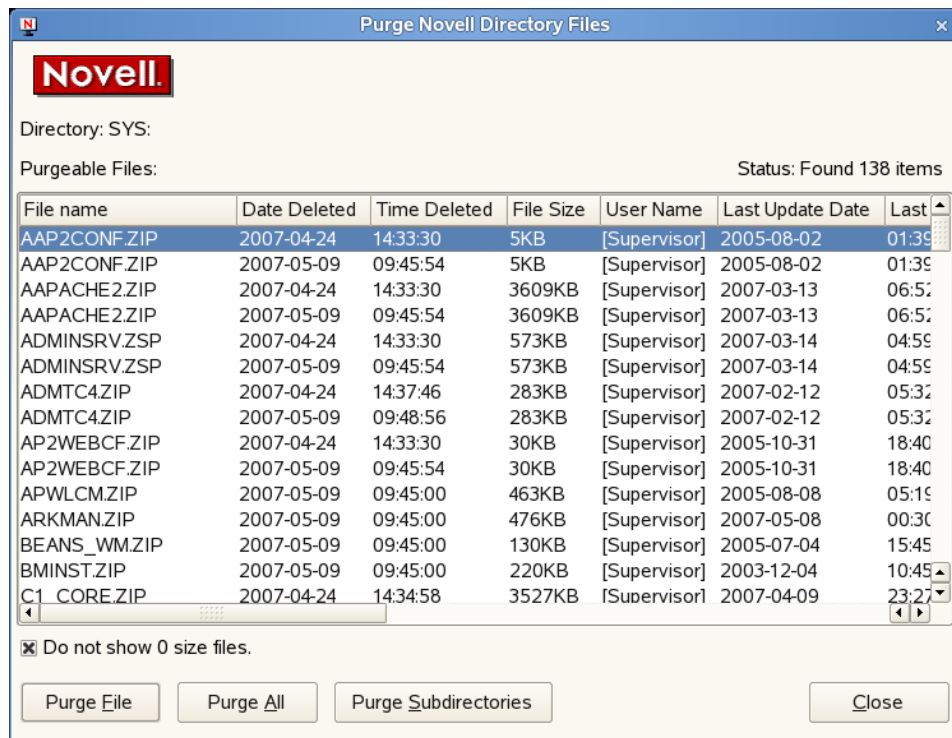
- ♦ The Purge Delay setting times out. Deleted files are purged automatically.
- ♦ The server starts purging files if a volume starts to fill up; the oldest files that have been deleted are automatically purged.
- ♦ If you do not want a file to be restored after deletion, you can enable the Immediate Purge of Deleted Files parameter. The file is deleted and purged immediately.
- ♦ You manually purge the deleted files.

WARNING: The Purge utility permanently removes deleted files from the selected directory. Purged files cannot be recovered with the Salvage utility.

IMPORTANT: You cannot purge deleted files or directories from an OES for Linux Reiser volume.

- 1 Click  > *Novell Utilities* > *Purge Deleted Files*.

- 2 Select the folder where the files you want to purge are located, then click *OK*.



- 3 Select the files you want to purge

To display files with 0 bytes, deselect *Do not show 0 size files* (selected by default). This refreshes the display to show all deleted files, no matter the size.


- 4 Click *Purge File*.

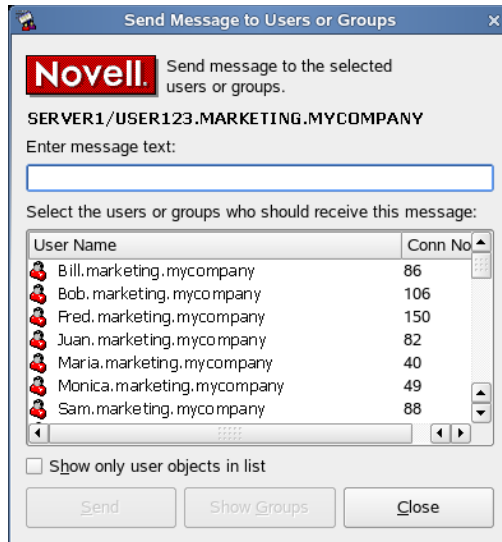
To purge all deleted files in the folder, click *Purge All*. To purge subdirectories, click *Purge Subdirectories*.

- 5 Click *Close*.

2.6 Sending Messages to Users

Use the Send Message to User utility to send a simple message to users on the network. You can send the message to a single user or group or to multiple users or multiple groups of users. The message appears on the receiver's screen in a message pop-up dialog box. On your screen, the Send Message Results dialog box shows the results. Only users who are logged in at the time you send the message receive the message.

- 1 Click  > *Novell Utilities* > *Send Message to User*.
- 2 Select a server to see a list of users and groups on that server, then click *Select*.




- 3 Type the message you want to send in the *Enter message text* field.
- 4 Select the users or groups that you want to receive the message.
- 5 Click *Send*.

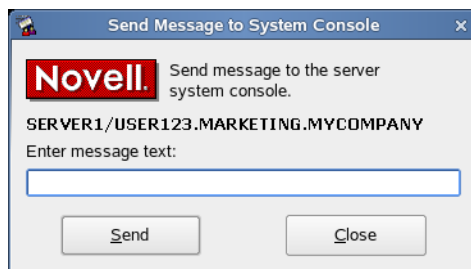
The Send Message Results dialog box shows which users or groups the message was sent to.

- 6 Click *OK*, then click *Close*.

2.7 Sending Messages to the System Console

Use the Send Message to System Console utility to send messages to a server system console.

- 1 Click  > *Novell Utilities* > *Send Message to System Console*.
- 2 Select a server, then click *Select*.



- 3 Type the message you want to send in the *Enter Message Text* field.
- 4 Click *Send*, then click *OK*.

Documentation Updates

A

This section contains information on documentation content changes made in this guide since the initial release of the Novell® Client™ for Linux. The information will help you keep current on updates to the documentation.

The documentation was updated on the following dates:

- ♦ [Section A.1, “September, 2009,” on page 27](#)
- ♦ [Section A.2, “August, 2008,” on page 27](#)

A.1 September, 2009

- ♦ Updated the version of Novell Client for Linux.
- ♦ Updated the information regarding platform support.

A.2 August, 2008

- ♦ Updated the title page in the PDF version of this guide.

