

# 56K USB Modem

## Easy Start (Read Me First)

Version 1.4

### Contents

|  |    |
|--|----|
| About this Easy Start .....                | 5  |
| Package .....                              | 5  |
| Step 1: Connecting Your Modem .....        | 6  |
| Step 2: Installing Your Modem Driver ..... | 7  |
| 2.1 For Windows® 98 Second Edition ...     | 7  |
| 2.2 For Windows® Me .....                  | 8  |
| 2.3 For Windows® 2000 .....                | 9  |
| 2.4 For Windows® XP .....                  | 10 |

*Product warranty does not apply to damage caused by lightning, power surges or wrong voltage usage.*

### WARNING

Before installing the Modem card ensure the PC is switched OFF and the mains cord removed. If servicing the Modem card ensure the PC is switched OFF, the mains cord unplugged and the Telecommunications Line cord is disconnected from the Modem Card.

## European Network Compatibility Declaration

This product is designed to interwork with the Public Switched Telecommunication Networks in UK, Ireland, Netherlands, Sweden, Denmark, Finland, Switzerland, Luxembourg, Belgium, France, Germany, Spain, Portugal, Iceland, Greece, Italy, Norway and Austria.

The equipment may have interworking difficulties in PSTN networks in other countries. Please contact your equipment supplier if it is desired to use the equipment on another network.

### Electrical Safety

Before installing this equipment you must ensure that the power drawn by this card, together with the host and any auxiliary cards drawing power from the host, is within the rating of the host power supply.

The equipment must be installed such that with the exception of the connections to the host, clearance and creepage distances shown in the table below are maintained between the card and any other assemblies that use or generate a voltage shown in the table.

The larger distance shown in brackets applies where the local environment within the host is subject to conductive pollution or dry non-conductive pollution which could become conductive due to condensation. Failure to maintain these minimum distances would invalidate the approval.

| Clearance | Creepage (mm) | Voltage used or Generated by Host or Other Cards |
|-----------|---------------|--|
| 2.0       | 2.4 (3.8)     | Up to 50 Vrms or Vdc                             |
| 2.6       | 3.0 (4.8)     | Up to 125 Vrms or Vdc                            |
| 4.0       | 5.0 (8.0)     | Up to 250 Vrms or Vdc                            |
| 4.0       | 6.4 (10.0)    | Up to 300 Vrms or Vdc                            |

The analogue telecommunications interface is intended to be connected to telecommunication network voltage (TNV) circuits which may carry dangerous voltages. The telephone cord must remain disconnected from the telecommunications system until the card has been installed within a host which provides the necessary protection of the operator.

If it is subsequently desired to open the host equipment for any reason, the telephone cord must be disconnected prior to effecting access to any internal parts which may carry telecommunication network voltages.

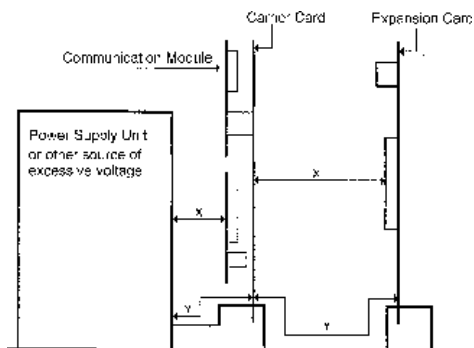
Safety level of the various connectors:

- Telephone Line Connector = TNV3
- PCI connector = SELV

These indications are classified as per safety standards EN60950/A4:

- TNV3: Telecommunications Network Voltage
- SELV: Safety Extra Low Voltage

Except for the edge connector which plugs into the host's expansion slot, clearance distance (Xmm) and creepage distance (Ymm) as given in the above table, must be maintained between the communication card and any other assemblies which use or generate a hazardous voltage.



## Pan European Approval Regulatory Note

The equipment has been approved under CTR21. For such product, the following statement is required :

*"This equipment has been approved in accordance with Council Decision 98/482/EC for Pan European single terminal connection to the Public Switched Telephone Network (PSTN). However, due to differences between the individual PSTNs provided in different countries the approval does not, of itself, give an unconditional assurance of successful operation on every PSTN network termination point.*

*In the event of problems, you should contact your equipment supplier in the first instance"*

*"Dieses Geraet wurde gemaess der Entscheidung 98/482/EG des Rates europaweit zur Anschaltung als einzelne Endeinrichtung an das oeffentliche Fernsprechnetzzugelassen. Aufgrund der zwischen den oeffentlichen Fernsprechnetzen verschiedener Staaten bestehenden Unterschiede stellt diese Zulassung an sich jedoch keine unbedingte Gewaehr fuer einen erfolgreichen Betrieb des Geraets an jedem Netzabschlusspunkt dar. Falls beim Betrieb Probleme auftreten, sollten Sie sich zunaechst an ihren Fachhaendler wenden."*

*«Cet équipement a reçu l'agrément, conformément à la décision 98/482/CE du Conseil, concernant la connexion paneuropéenne de terminal unique aux réseaux téléphoniques publics commutés (RTPC). Toutefois, comme il existe des différences d'un pays à l'autre entre les RTPC, l'agrément en soi ne constitue pas une garantie absolue de fonctionnement optimal à chaque point de terminaison du réseau RTPC.*

*En cas de problème, vous devez contacter en premier lieu votre fournisseur.»*

*«La presente apparecchiatura terminale è stata approvata in conformità della decisione 98/482/CE del Consiglio per la connessione paneuropea come terminale singolo ad una rete analogica PSTN. A causa delle differenze tra le reti dei differenti paesi, l'approvazione non garantisce però di per sé il funzionamento corretto in tutti i punti di terminazione di rete PSTN.*

*In caso di problemi contattare in primo luogo il fornitore del prodotto.»*

*«Este equipo ha sido homologado de conformidad con la Decisión 98/482/CE del Consejo para la conexión paneuropea de un terminal simple a la red telefónica pública conmutada (RTPC). No obstante, a la vista de las diferencias que existen entre las RTPC que se ofrecen en diferentes países, la homologación no constituye por sí sola una garantía incondicional de funcionamiento satisfactorio en todos los puntos de terminación de la red de una RTPC.*

*En caso de surgir algún problema, procede ponerse en contacto en primer lugar con el proveedor del equipo.»*

*"Dit apparaat is goedgekeurd volgens Beschikking 98/482/EG van de Raad voor de pan-Europese aansluiting van enkelvoudige eindapparatuur op het openbare geschakelde telefoonnetwerk (PSTN). Gezien de verschillen tussen de individuele PSTN's in de verschillende landen, biedt deze goedkeuring op zichzelf geen onvoorwaardelijke garantie voor een succesvolle werking op elk PSTN-netwerkaansluitpunt.*

*Neem bij problemen in eerste instantie contact op met de leverancier van het apparaat."*

### Network Compatibility Declaration

*This product is designed to interwork with the Public Switched Telecommunication Networks in UK, Ireland, Netherlands, Sweden, Denmark, Finland, Switzerland, Luxembourg, Belgium, France, Germany, Spain, Portugal, Iceland, Greece, Italy, Norway and Austria.*

## New Zealand Telecom Warnings

### General

"The grant of a Telepermit for any item of terminal equipment indicates only that Telecom has accepted that the item complies with minimum conditions for connection to its network. It indicates no endorsement of the product by Telecom, nor does it provide any sort of warranty. Above all, it provides no assurance that any item will work correctly in all respects with another item of Telepermitted equipment of a different make or model, nor does it imply that any product is compatible with all of Telecom's network services."

"This equipment does not fully meet Telecom's impedance requirements. Performance limitations may occur when used in conjunction with some parts of the network. Telecom will accept no responsibility should difficulties arise in such circumstances."

"This equipment shall not be set up to make automatic calls to the Telecom '111' Emergency Service."

"If a charge for local calls is unacceptable, the 'Dial' button should NOT be used for local calls. Only the 7-digits of the local number should be dialled from your telephone. DO NOT dial the area code digit or the '0' prefix."

"This equipment may not provide for the effective hand-over of a call to another device connected to the same line."

### Important Notice

Under power failure conditions, this telephone may not operate. Please ensure that a separate telephone, not dependent on local power, is available for emergency use."

"Some parameters required for compliance with Telecom's Telepermit requirements are dependent on the equipment (PC) associated with this device. The associated equipment shall be set to operate within the following limits for compliance with Telecom's Specification :-

1. (a) There shall be no more than 10 call attempts to the same number within any 30 minute period for any single manual call initiation, and  
(b) The equipment shall go on-hook for a period of not less than 30 seconds between the end of one attempt and the beginning of the next attempt.
2. Where automatic calls are made to different numbers, the equipment shall go on-line for a period of not less than 5 seconds between the end of one attempt and the beginning of the next attempt.
3. The equipment shall be set to ensure that calls are answered between 3 and 30 seconds of receipt of ringing."

"All persons using this device for recording telephone conversations shall comply with New Zealand law. This requires that at least one party to the conversation is to be aware that it is being recorded. In addition, the Principles enumerated in the Privacy Act 1993 shall be complied with in respect to the nature of the personal information collected, the purpose for its collection, how it is used and what is disclosed to any other party."

## About this Easy Start

This booklet contains information on setting up your 56K USB Modem. It touches on the key installation procedures to help you setup your modem.

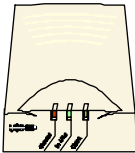


For problems encountered during setting up or running your modem, please refer to the **Frequently Asked Questions** and/or **Troubleshooting Guide** located in the **Manuals** folder on your Installation CD.

## Package

Please see that you have the following items in your package. For any missing items, please contact your dealer immediately.

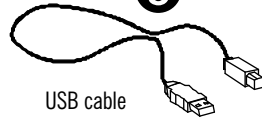
(The actual cables that come with your package may differ in appearance from country to country)

**1**

56K USB Modem

**2**

Installation CD

**3**

USB cable

**4**

this Easy Start

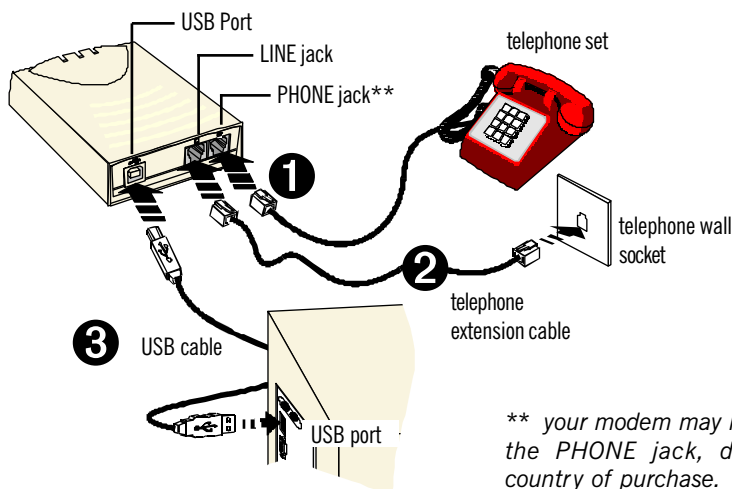
**5**

Telephone extension cable



## Step 1: Connecting Your Modem

With the "Hot Swap" feature in this modem, you can connect your modem to your computer anytime, without having to power off your system!

Connect as follow and your Windows will immediately detect the new hardware and prompt for its driver!



*\*\* your modem may not come with the PHONE jack, depending on country of purchase.*

- ❶ Connect a **telephone set** to the modem.  
(This optional connection eliminates the need to switch between your telephone set and your modem if they are sharing the same telephone wall socket.)
- ❷ Connect one end of the **telephone extension cable** to the **modem** and the other end to a **telephone wall socket**.
- ❸ Connect one end of the **USB cable** (  ) to the **modem** and the other end (  ) to the **USB port of your computer**.



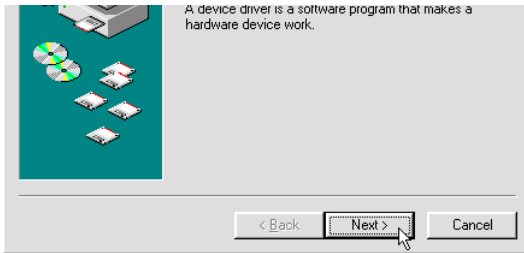
The screen shots or screen information illustrated in this booklet serve only as a guide. The exact information you see on your system may vary, depending on your system configurations. For any dissimilarities, follow closely to the instructions as prompted on your PC screen.

## Step 2: Installing Your Modem Driver

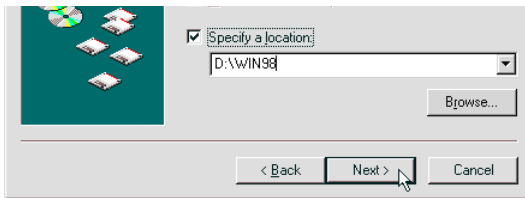
### 2.1 Installing Your Modem Driver - For Windows® 98 Second Edition

If you have connected your modem as shown in the section **Connecting Your Modem**, you will be prompted for the modem driver.

1. Place the **Installation CD** into your CD-ROM Drive and click **Next**.

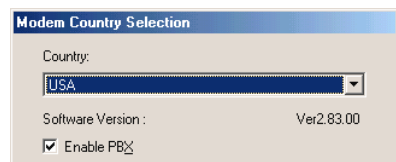


2. Click the option "**Search for the best driver for your device. (Recommended).**" and click **Next**.
3. Click **Specify a location**. Click **Browse** and navigate to '\win98' folder on your Installation CD. Click **Next**.



4. Windows will prompt that it has located the driver. Click **Next** to proceed.
5. Click **Finish** to complete the driver installation.
6. A window for Country Select will be displayed. Select the country that you are currently in and click **OK**.

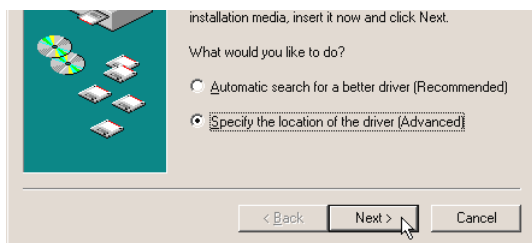
This completes your modem driver installation in Windows® 98 Second Edition.



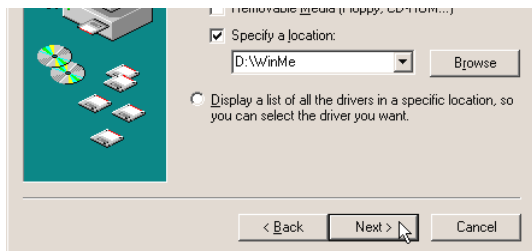
## 2.2 Installing Your Modem Driver - For Windows® Me

If you have connected your modem as shown in the section **Connecting Your Modem**, you will be prompted for the modem driver.

1. Place the **Installation CD** into your CD-ROM Drive.  
Click the option **Specify the location of the driver (Advanced)** and click **Next**.

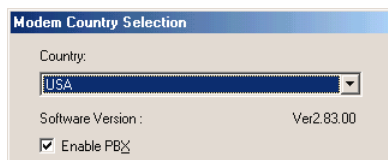


2. Select **Specify a location**.  
Click **Browse** and navigate to '**WinMe**' on your Installation CD.  
Click **Next**.



3. Windows will prompt that it has located the driver.  
Click **Next** to proceed.
4. Click **Finish** to complete the software installation.
5. A window for Country Select will be displayed. Select the country that you are currently in and click **OK**.

This completes your modem driver installation in Windows® Me.

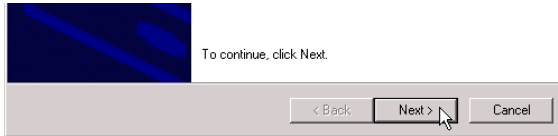




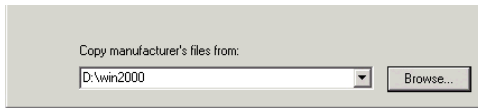
## 2.3 Installing Your Modem Driver - For Windows® 2000

If you have connected your modem as shown in the section **Connecting Your Modem**, you will be prompted for the modem driver.

1. Place your Installation CD into your CD-ROM drive and click **Next**.



2. Click the option **Search for the best driver for your device. (Recommended)** and click **Next**.
3. Click the option **Specify a location** and click **Next**.
4. Click **Browse** and navigate to 'win2000' folder on your Installation CD and click **Next**.



5. Windows will prompt that it has located the driver. Click **Next** to proceed.

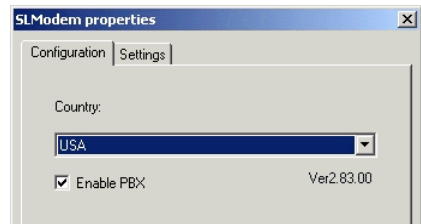


**You may be prompted with Digital Signature Not Found dialog box. (This happens when Windows detects your driver as a new version.) Click Yes to proceed.**

6. To complete the software installation, click **Finish**.
7. You will be asked to select your country.

From the drop-list, select the Country that you are currently in and click **OK**.

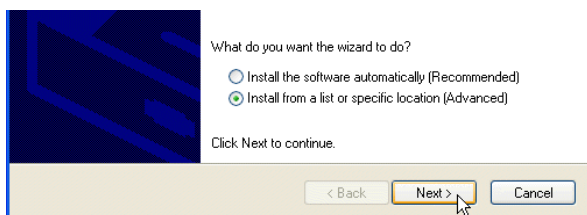
This completes your modem driver installation in Windows® 2000.



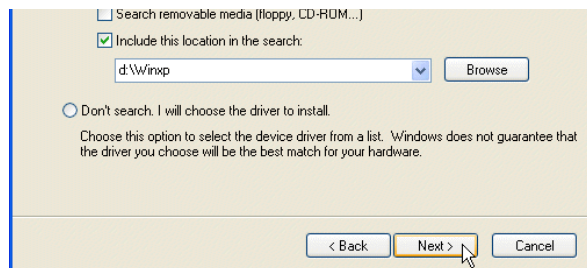
## 2.4 Installing Your Modem Driver - For Windows® XP

If you have connected your modem as shown in the section **Connecting Your Modem**, you will be prompted for the modem driver.

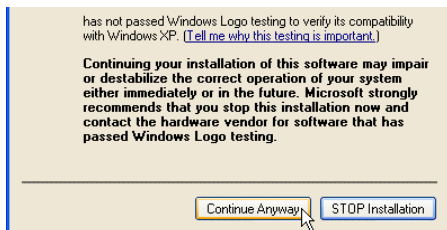
1. Place your Installation CD into your CD-ROM drive.  
Click the option **Install from a list or specific location (Advanced)** and click **Next**.



2. Click the option **Include this location in the search**.  
Click **Browse** and navigate to '**winxp**' folder on the Installation CD and click **Next**.



3. At the following prompt, click **Continue Anyway**. (This prompts occurs when Windows detects your driver as new driver).



4. Click **Finish** to complete the installation.

This completes your modem driver installation in Windows® XP.