

IMPORTANT:

Setting Up BroadBand Connection Under Windows® XP for DSL TURBO 900E Users

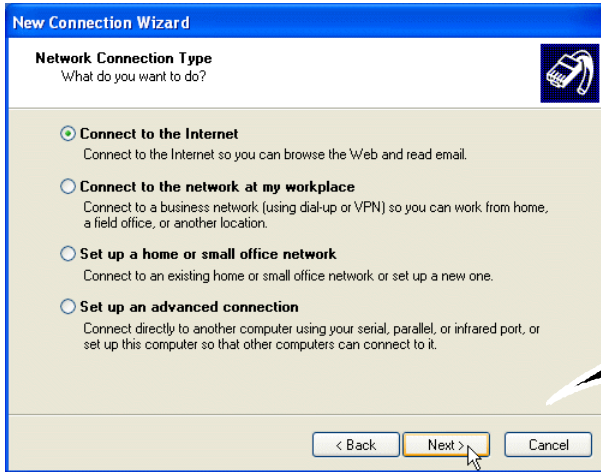
This booklet contains the additional information for **DSL TURBO 900 Package User's Manual**. Below are the steps to configure your **Windows® XP** to support BroadBand Connection:



1. For Windows® XP users, the DSL 900E(B) CD-ROM that comes with your modem package is not required. Proceed with the instructions in this note to setup your broadband connection.
2. For users who have just upgraded to Windows® XP and had WinPoET already installed, you need to remove the WinPOET utility (see your user manual for instructions) and proceed with the instructions in this note in order to run your broadband connection.

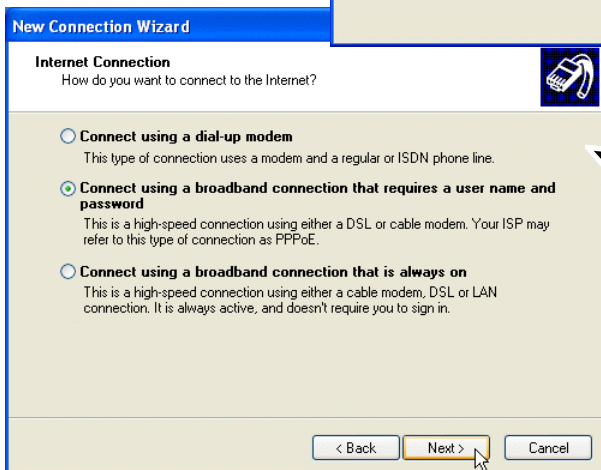
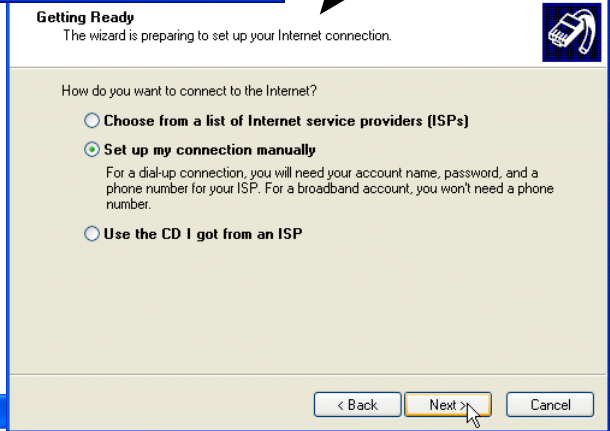
1. Click **Start > All Programs > Accessories > Communications > New Connection Wizard**.
2. At the following prompt, click **Next**.





3. Select **Connect to the Internet** and click **Next**.

4. Select **Set up my connection manually** and click **Next**.



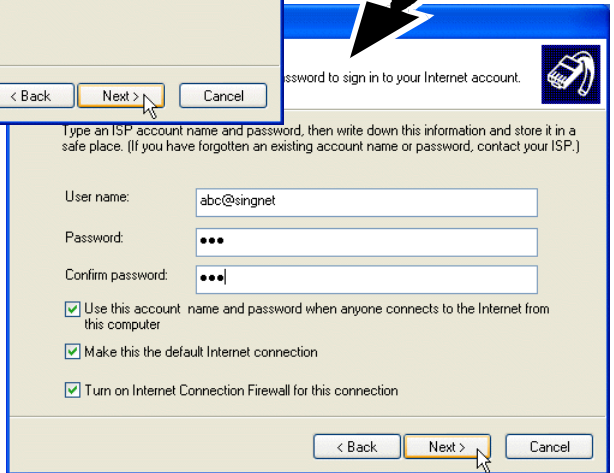
5. Select **Connect using a broadband connection that requires a user name and password** and click **Next**.



6. Enter any Dial-Up connection name that you desire. (Example shown here is **SingNet**).
- Click **Next**.



7. For the account information, enter your username with '@singnet' for Singnet BroadBand users. Enter your password as given by your ISP and click **Next**.



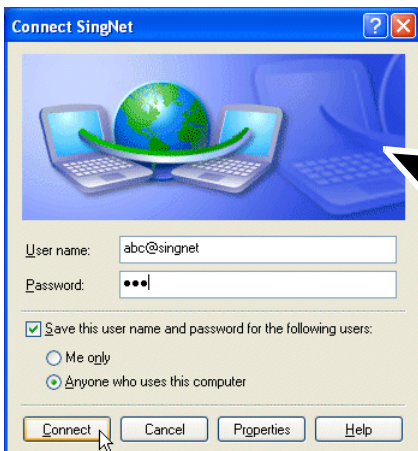
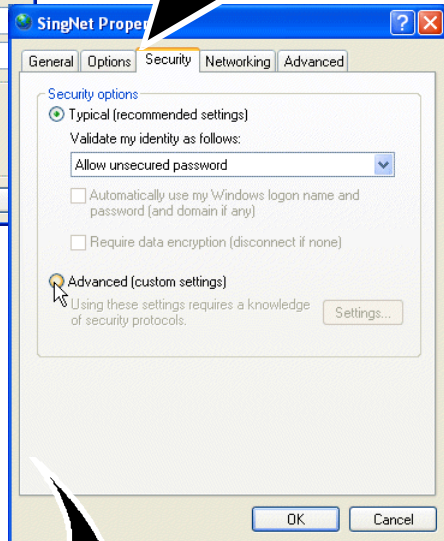
8. Check the box **Add a shortcut to this connection to my desktop** and click **Finish**.



9. You should see the dial-up connection  generated on your desktop. Double-click on it.
10. At the following prompt, click **Properties**.



11. Select **Security** tab. Click **Advanced (custom settings)** and click **OK**.



12. Enter your password as given by your ISP and click **Connect**.

You should see SingNet is now connected. Double-click on your Microsoft® Internet Explorer® or Netscape® Navigator to begin surfing.