

WIRELESS ADSL



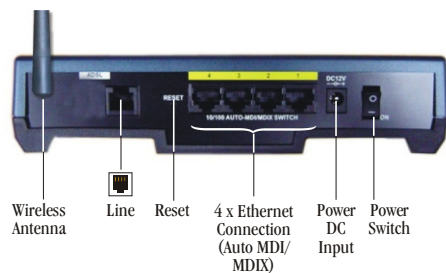
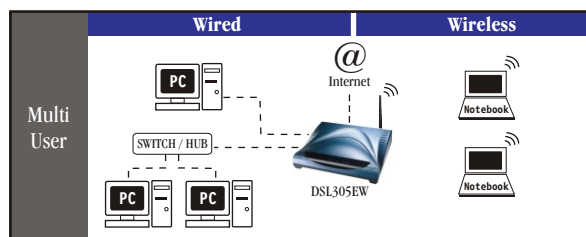
DSL355EW(UR2)

Wireless LAN 4 Port Ethernet Router with ADSL Modem

The Aztech **DSL355EW(UR2)** ADSL Annex B/UR2 IEEE802.11b WLAN 4 Port Ethernet Combo Router provides users the ideal solution for connecting high speed broadband internet using ADSL and mobile connectivity is provided via industry leading IEEE802.11b WLAN technology. The DSL355EW(UR2) provides users with a single device to operate as a ADSL modem/router and Wireless LAN Access Point. With the inbuilt 4 port 10/100 AutoMDI/MDIX Switch, users can also have wired connectivity using either Cross or Straight UTP Cables

The DSL355EW(UR2) comes with full feature routing, easy to use web management interface and customer friendly diagnostic tools such as PPP LED. The DSL355EW(UR2) is targeted at residential/SOHO deployment allowing for multi-user sharing of ADSL line via wireless and wired connectivity.

Allows For Wired & Wireless Internet Sharing



Aztech

TOTAL POWER PERFORMANCE

ADSL/ATM Support

- Annex B
- ITU-T G.992.1 (G.dmt Annex B ADSL over ISDN Compliant)
- DTAG UR2 Compliant
- Using Discrete Multi-Tone (DMT) line encoding scheme
- Rate Adaptive modem at 32 Kbps steps
- ATM Layer with Traffic shaping (UBR/CBR)
- AAL ATM Attributes - AAL5
- VPI Range (0-255) and VCI range (1-65535)
- Multiple PVC up to 8 support
- Spectral compatibility with ISDN
- F4/F5 OAM Loopback

Encapsulation Support

- RFC2684 (RFC1483) Bridged and Routed for both LLC/VC Mux
- RFC2364 PPPoA Client Support
- RFC2516 PPPoE Client Support

Network Support

- Static IP, Dynamic RIP support
- Network Address Translation (NAT)
- Port Mapping/Forwarding
- NAT Application Level Gateway for popular applications
- DHCP Server/Relay/client
- DNS Relay Agent
- Single VPN Passthrough for IPSEC, L2TP, PPTP
- DMZ support
- PPP Auto Reconnect and configurable timeouts
- PPP Auto Reconnect on WAN Access/PPP on Demand
- IGMP Multicast Support

Management Support

- HTTP Firmware Upgrade Support
- Remote management through HTTP
- Web Management for configuration assistance
- Easy Connection screen for user
- Web Based Diagnostic Test Utility for Fault Isolation
- SNMP Support
- Telnet Support
- Firmware upgradeable for future feature enhancement
- System logging support
- Dying Gasp support

Security Support

- Password Access Control (Default Off - User name = Admin, No Password)
- NAT for basic Firewall support
- Wireless SSID Authentication & 40/128bit WEP data encryption

WLAN Support

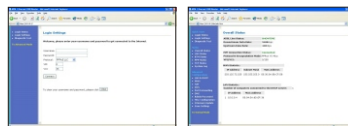
- IEEE 802.11b WLAN/Wifi Support
- Frequency Band: 2400-2483.4 Mhz
- Wireless Medium : Direct Sequence Spread Spectrum (DSSS)
- Modulation: DBPSK at 1Mbps, DQPSK at 2Mbps, CCK at 5.5Mbps and 11Mbps
- Dynamic Rate Scaling from 11Mbps, 5.5Mbps, 2Mbps, 1Mbps
- Operation Channel: - 11 Channel (North America) - 13 Channel (Europe)
- Range of up to 300 Feet
- Receiver sensitivity: - 83 dBm @ 11Mbps, - 87 dBm @ 5.5Mbps at 8% PER
- Output Power: + 12 dBm Max
- Transmitter Power: + 15-17 dBm Max
- Microwave Interference Robustness
- Single Point Management for Access Point and ADSL Router via Web Management
- SSID Access Control for security

LED Indicators

- 1 x Power LED
- 4 x Ethernet Link/Activity Status LED
- 1 x WLAN Link Status LED
- 1 x ADSL Link Status LED
- 1 x PPP Link Status LED

External Connectors

- 1 x RJ-45 socket for ADSL line (Grey Coloured Port)
- 4 x RJ45 for 10/100 Base-T Ethernet (AutoMDI/MDI-x/Yellow Coloured Port)
- 1 x DC 12V Power Connector
- 1 x Factory Default Reset
- 1 x On/Off Power Switch



Web Based Configuration

www.aztech.com

- Head Office** : AZTECH SYSTEMS LTD, 31 Ubi Road 1, Aztech Building, S408694.
Tel: (65) 6741-7211, Fax: (65) 6749-1198.
- USA Office** : AZTECH LABS, INC. 45276 Industrial Drive, Fremont, California, CA94538, USA.
Tel: (1) (510) 683-9800, Fax: (1) (510) 683-9803.
- Germany Office** : AZTECH SYSTEMS GmbH, Böttgerstrasse 2-14, 65439 Flörsheim am Main, Germany.
Tel: (49) (6145) 952-5, Fax: (49) (6145) 952-499.
- Hong Kong Office** : AZTECH SYSTEMS (H.K) Ltd, Rooms 2-10, 3rd Floor, No.1 Science Park East Avenue, Hong Kong Science Park, Pak Shek Kok, Shatin, New Territories, Hong Kong.
Tel: (852) 2757-1177, Fax: (852) 2753-0578.
- Malaysia Office** : AZ-TECHNOLOGY SDN BHD, 59B 2nd Floor, Jalan SS 25/2, 47301, Petaling Jaya, Selangor, Malaysia.
Tel: (02) (03) 7804-8450, Fax: (02) (03) 7804-8457.