

ADSL

Web-based - No CD required
Ethernet Interface
OS Independent



Aztech **DSL305E** ADSL Ethernet Bridge Modem is a standards based ADSL Modem targetted for residential users either for a single user or for multi-user via connection to Cable/DSL Routers.

Aztech DSL305E provides high speed DSL access at home to a Ethernet attached PC regardless of Operating system platform. Installation is via the Web Based interface and there is no need for Installation CD making the process a simple and user friendly process.

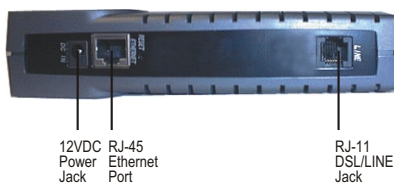
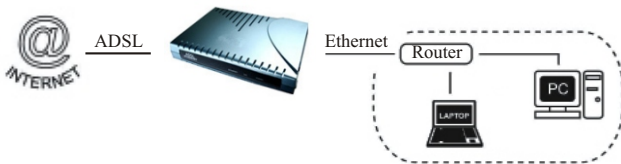
With Aztech DSL305E, surfing the web, viewing streaming video or online gaming becomes truly enjoyable for the user.

Targeted at the residential users, it can be used either as a

1) single user modem, or



2) For multi-user connectivity to a cable/DSL Broadband router.



DSL 305E

*ADSL Ethernet Bridge Modem
for high speed connectivity*

ADSL/ATM Support

- ANSI T1.413 issue 2
- ITU-T G.992.1 (G.dmt) and G.992.2 (G.lite)
- Discrete Multi-Tone (DMT) line encoding
- Rate Adaptive modem at 32 Kbps steps
- ATM Layer with Traffic shaping (UBR/CBR)
- AAL ATM Attributes - AAL5
- Multiple PVC up to 8 support
- Spectral compatibility with POTS
- F5 OAM Loopback/Send
- UNI 4.0 Support

Memory

- Flash ROM - 2MB
- SDRAM - 8MB

Encapsulation Support

- Transparent Bridge (IEEE 802.1d)
- PPP Half Bridge Support

Network Support

- IP/TCP/UDP/ICMP/ARP/RARP Application Support
- DHCP Server
- DNS Relay Agent

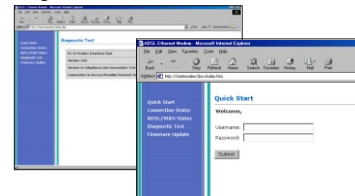
Management Support

- Local Web/FTP Upload of Firmware
- Remote Firmware Upload via FTP
- FTP Server/Client Support
- Web Management/HTTP Server for configuration assistance
- Firmware upgrade-able for future feature enhancement

Security Support

- PAP/CHAP for Password Authentication Support

Diagnostic Test



Quick Start

Web Based Setup

Aztech
TOTAL POWER PERFORMANCE

www.aztech.com

Head Office : **AZTECH SYSTEMS LTD.** 31 Ubi Road 1, Aztech Building, S408694.
Tel: (65) 6741-7211, Fax: (65) 6749-1198.
USA Office : **AZTECH LABS, INC.** 45276 Industrial Drive, Fremont, California, CA94538, USA.
Tel: 019(1)(510) 683-9800, Fax: 012(1)(510) 683-9803.
Germany Office : **AZTECH SYSTEMS GmbH.** Bottgerstrasse 2-14, 65439 Floersheim am Main, Germany.
Tel: 019(49)(6145) 952-5, Fax: 012(49)(6145) 952-499.
Hong Kong Office : **AZTECH SYSTEMS (H.K) Ltd.** Unit 1806, 18/F 113 Argyle Street, Mongkok, Kowloon, Hong Kong.
Tel: 019(852) 2757-1177, Fax: 012(852) 2753-0578.
Malaysia Office : **AZ-TECHNOLOGY SDN BHD.** 59B 2nd Floor, Jalan SS 25/2, 47301, Petaling Jaya, Selangor,
Malaysia. Tel: (02)(03) 7804-8450, Fax: (02)(03) 7804-8457.