

DSL500U

ADSL USB Modem

Easy Start

(Read Me First)

Version 2.0

Contents...

About this Easy Start	2
Safety Guidelines	2
Package	2
Minimum System Requirements	3
LED Indicators	3
Step 1: Connecting Your DSL500U ADSL USB Modem ...	4
Step 2: Installing Your DSL500U ADSL USB Modem	
Driver	5
2.1 For Windows® 98 Second Edition	5
2.2 For Windows® Me	8
2.3 For Windows® XP	10
2.4 For Windows® 2000	12
Step 3: Dial-Up to the Internet	14
Technical Support	15

Product warranty does not apply to damage caused by lightning, power surges or wrong voltage.

Safety Guidelines

- Keep the modem away from fluid, direct sunlight and excessive heat.
- During times of lightning strike/thunderstorm, do not use the modem.
- This product is for use only in UL Listed computers.
- To reduce the risk of fire, use only No. 26 AWG or larger telecommunication line cord.

About this Easy Start

This booklet contains information on setting up your DSL500U ADSL USB Modem. It touches on the key installation procedures to help you setup your modem !

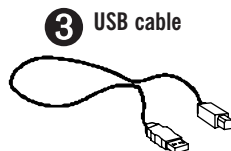
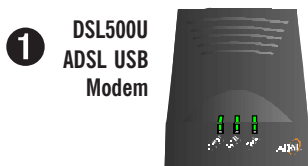


On commonly asked questions or for problems encountered during the setting up / running of your modem, please refer to the **Frequently Asked Questions** located in the **Manuals** folder on your Installation CD.

Package

If you found any missing items, please contact your dealer immediately.

(The actual cables that are included with your package may differ in appearance from country to country)



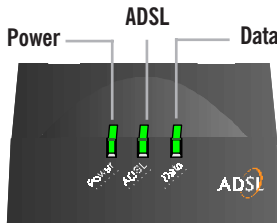
¹ Micro-Filter can be purchased separately from your dealer.

Minimum System Requirements

- IBM PC-based computer with Pentium® 233 processor MMX
- 32MB RAM
- 20MB hard disk space (system files and modem driver only)
- A free USB Port
- CD-ROM drive
- Windows® 98 Second Edition / Windows® Me / Windows® XP / Windows® 2000

LED Indicators

The LED indicators show the status of the following:



Power : **Lights up** when power is supplied via the USB port from your PC.

ADSL : **Lights up** when the ADSL line is established.

: **Blinks** when no line is connected or ADSL line is not established.

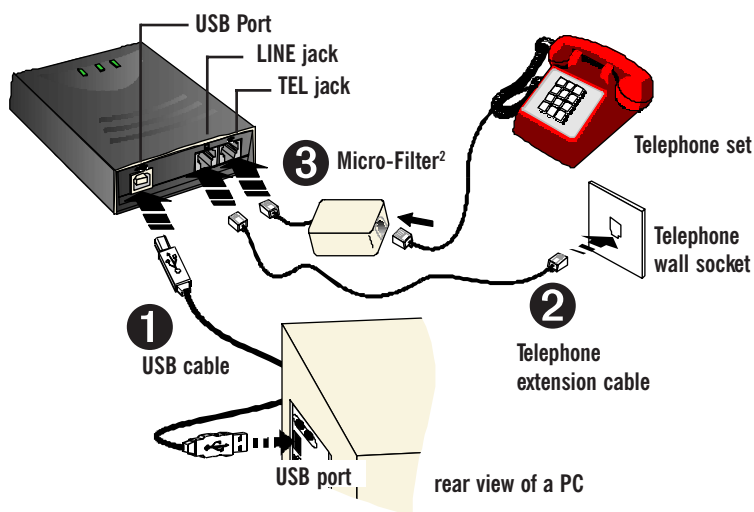
Data : **Blinks** when the modem is transmitting/receiving data.



: **Lights up** when modem is installed.

Step 1: Connecting Your DSL500U ADSL USB Modem

With the "Hot Swap" feature in this modem, you can connect your modem to your computer without having to power off your system!

Carry out the connections as illustrated.



- ❶ Connect one end of the **USB cable** () to the **USB Port** on the **modem** and the other end () to the **USB port** of your computer.
- ❷ Connect one end of the **telephone extension cable** to the **LINE Jack** on the **modem** and the other end to a **Telephone wall socket**.
- ❸ Connect a Micro-Filter² (can be purchased separately from your dealer) to the **TEL Jack** on the modem. Connect your **Telephone Set** to the Micro-Filter. (The optional connection to the telephone set provides easy access to the phone while working near the modem. The connection to the Micro-Filter is not required if you are not connecting to a Telephone Set).

² For details on the usage of the Micro-Filter, please refer to the Frequently Asked Question, 'Do I need to use Micro-Filter when using ADSL ?' on the Installation CD (manuals folder).

Step 2: Installing Your DSL500U ADSL USB Modem Driver



The screen shots, screens information and steps illustrated in this manual serve only as a guide. The exact information and steps you see on your system may vary, depending on your system configurations. For any dissimilarities, follow closely to the instructions as prompted on your PC screen.

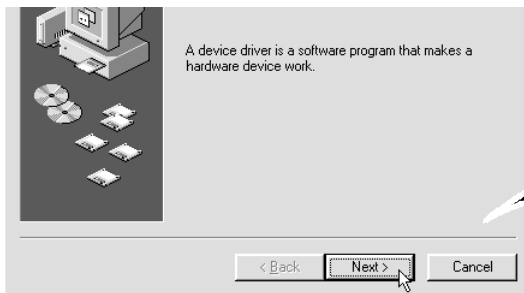
Power on your computer (if it is not powered on during connection). If you have connected the USB cable from your computer to your modem as illustrated in [Step 1](#), you will be prompted with the following window to install the driver.

2.1 For Windows® 98 Second Edition

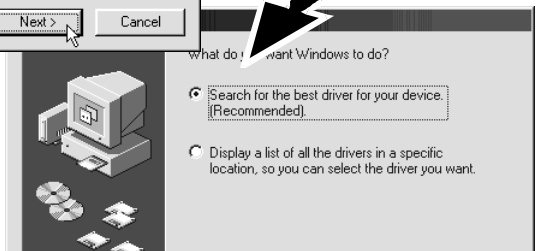


You may be prompted for your Windows CD-ROM during the driver installation. Have it ready by your side.

- i. Place the **Installation CD** into your CD-ROM Drive and click **Next**.

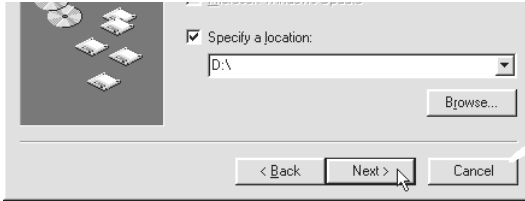


- ii. Select **Search for the best driver for your device (Recommended)** and click **Next**.

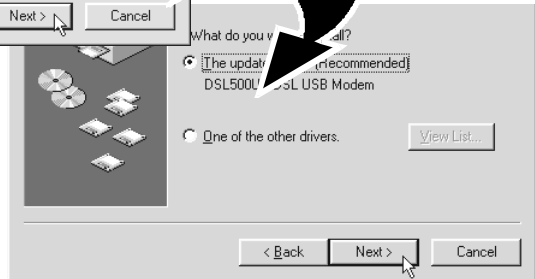


- iii. Click **Specify a location**.

Enter your CD-ROM drive letter in the text box and click **Next**.



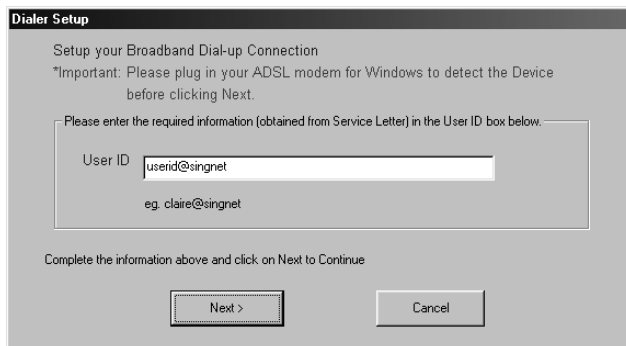
- iv. Click **The updated driver (Recommended)** **DSL500U ADSL USB Modem** and click **Next**.



- v. Click **Next** again to proceed installation with the specified driver.



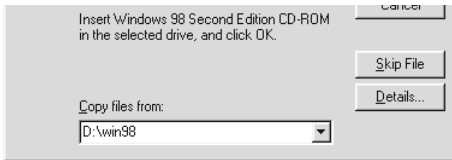
- vii. After copying the files, a Dialer setup prompt will prompt you for your **UserID**. Click **Next** to continue.



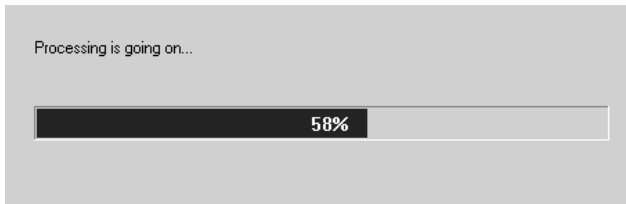
- viii. Click **OK** upon successful creation.



- ix. You will be prompted for your Windows CD-ROM. Place your Windows CD-ROM in your CD-ROM Drive. Enter the path of your Windows CD-ROM and click **OK**.



- x. A screen indicates installation process is going on.

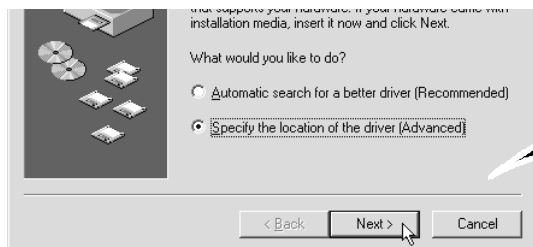


- xi. Restart your system to finish the installation.

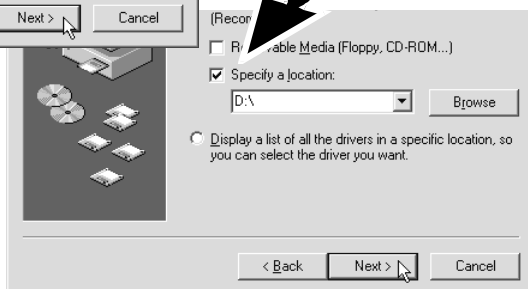


2.2 For Windows® Me

- i. Place the **Installation CD** into your CD-ROM Drive.
- ii. Select **Specify the location of the driver (Advanced)** and click **Next**.



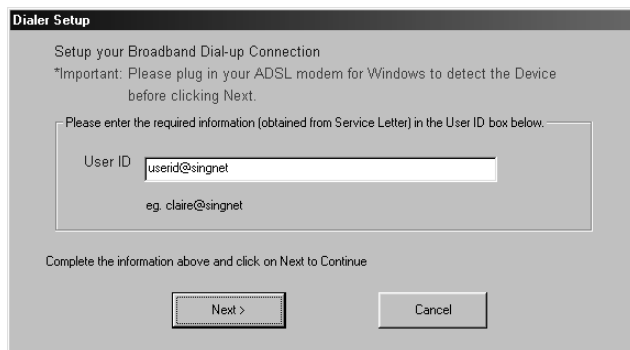
- iii. Click **Specify a location**. Enter your CD-ROM drive letter in the text box and click **Next**.



- iv. Click **Next** again to proceed installation with the specified driver.



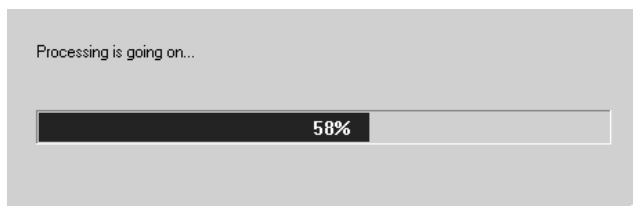
- v. After copying the files, a Dialer setup prompt will prompt you for your **UserID**. Click **Next** to continue.



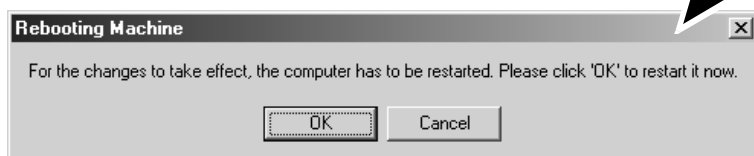
- vi. Click **OK** upon successful creation.



- vii. A screen indicates installation process is going on.

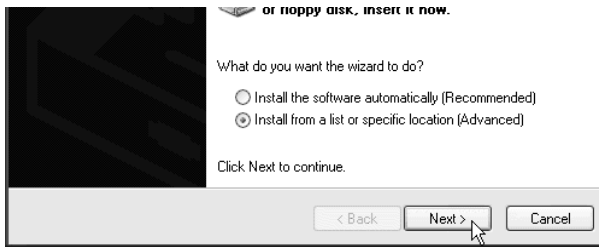


- viii. Restart your system to finish the installation.

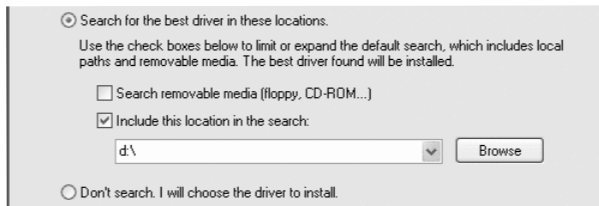


2.3 For Windows® XP

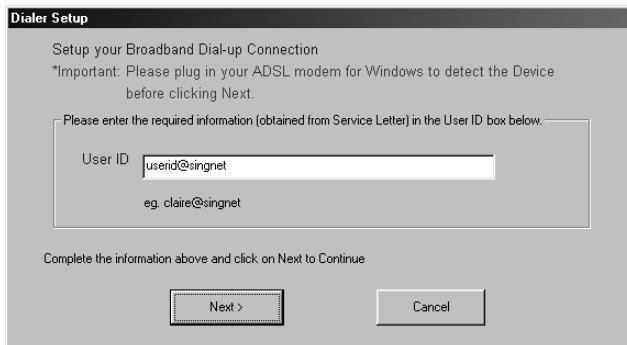
- i. Place the **Installation CD** into your CD-ROM Drive.
- ii. At the following prompt, select **Install from a list or specific location (Advanced)** and click **Next**.



- iii. Click **Include this location in the search**.
Enter your CD-ROM drive letter in the text box and click **Next**.



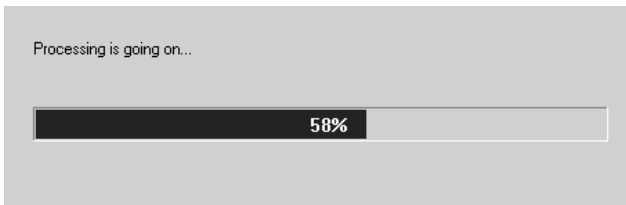
- iv. After copying the files, a Dialer setup prompt will prompt you for your **UserID**. Click **Next** to continue.



- v. Click **OK** upon successful creation.



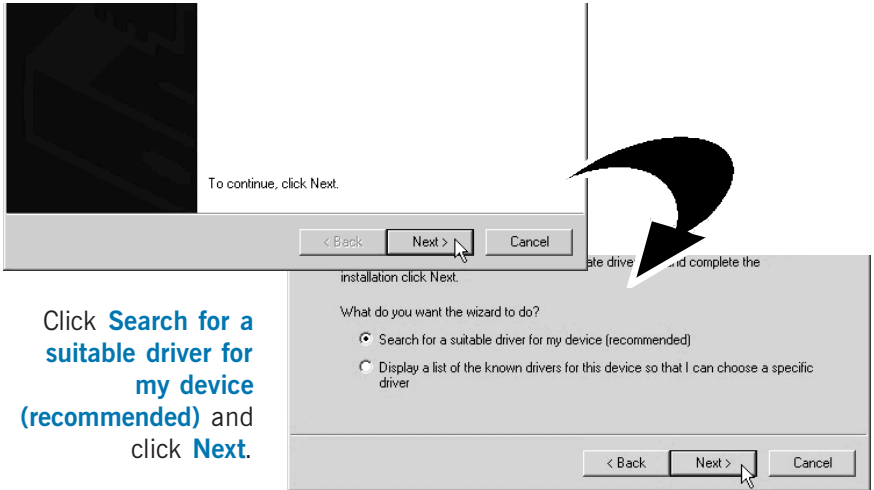
- vi. A screen indicates installation process is going on.



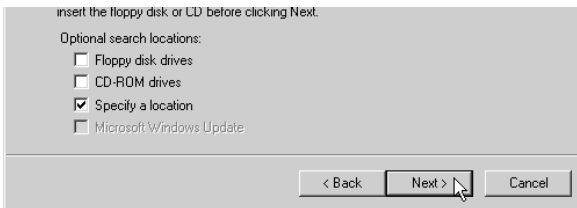
- vii. No restart is needed and installation is completed.

2.4 For Windows® 2000

- i. Place the **Installation CD** into your CD-ROM Drive.
- ii. At the following prompt, click **Next**.



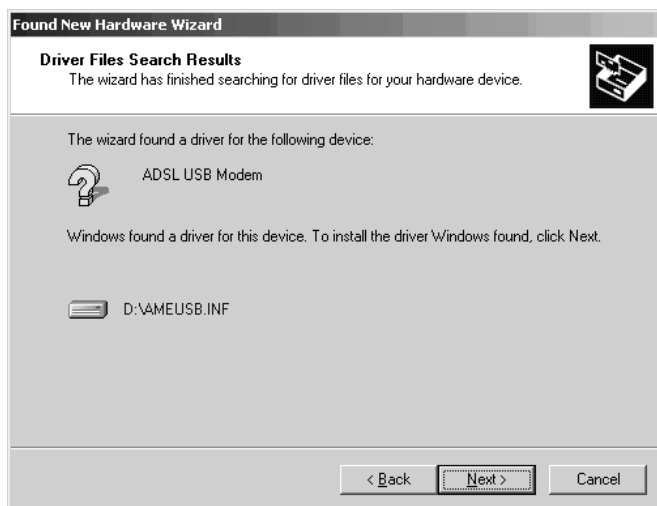
- iii. Click **Search for a suitable driver for my device (recommended)** and click **Next**.
- iv. Select **Specify a location** and click **Next**.



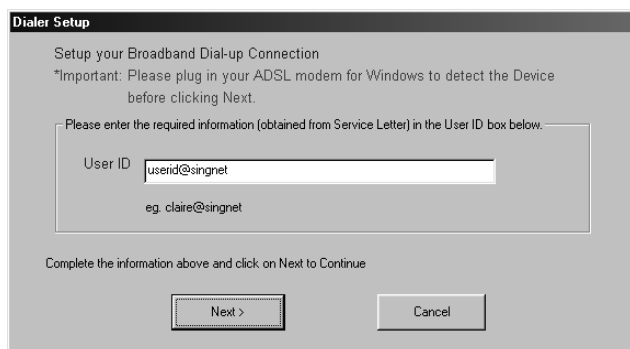
- v. Enter your CD-ROM drive letter in the text box and click **Next**.



- vi. Click **Next** to proceed installation with the specified driver.



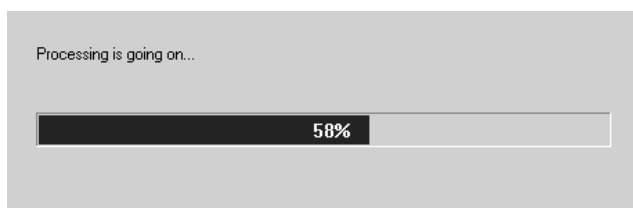
- vii. After copying the files, a Dialer setup prompt will prompt you for your **UserID**. Click **Next** to continue.



- viii. Click **OK** upon successful creation.




- ix. A screen indicates installation process is going on.



- x. No restart is needed and installation is completed.

Step 3: Dial-Up to the Internet

- i. To connect to the Internet, double-click on the shortcut icon **DSL500U ADSL USB Modem Dial-Up** on your Windows desktop.
(The shortcut icon was created when you have installed the modem driver successfully.)
- ii. Enter your **user name** and **password**. Click **Connect**.
- iii. Upon successful dial-up, you should be able to see an icon  displayed on your Windows system tray. Double-click on the icon.

Duration indicates the amount of time you are connected to the Internet. You may click **Disconnect** to end your session.

If you are not able to connect to the Internet, you may refer to the **Frequently Asked Questions**, '*I am not able to connect to the Internet.*' on your Installation CD.

Technical Support

Aztech Sales Enquiries

Hotline : (65) 6741 7211 (Marketing and Sales Department)
Email : sales@aztech.com
Fax : (65) 6749 1198
Working Hours : Monday to Friday - 0900 to 1700
Saturday/Sunday/Public Holidays - Closed

Aztech Technical Support

Hotline : (65) 6749 2062
Email : support@aztech.com
Fax : (65) 6749 1198
Working Hours : Monday to Friday - 0900 to 1700
Saturday/Sunday/Public Holidays - Closed

Technical Support Considerations

Majority of enquiries can be resolved efficiently. However, there may be cases when it is beyond our technical support to assist you. We may not be able to assist you in:

- **Hardware conflicts**
We will try to discover them and make suggestions but we are unable to repair them over the telephone.
- **Software conflicts**
Removal of other software and reinstalling our software may be the only solution.
- **O/S problem**
If you encounter problems like fatal exception or illegal operation, kindly refer to your PC vendor.
- **Modifications made to your software**
Our technical support officers are trained to support the software we provide as part of our service and they are knowledgeable about a wide range of other programs. However, we are unable to support software that has been modified.

- All other company or product names are trademarks or registered trademarks or service marks of their respective owners.