

Serial Number: rel/Singnet/05*Date:* 22 July 2003

R&D Product Release Note

Product Title: DSL500U*Release Version:* 2.0E2

Important Notice!

This release note describes the 2.0E2 release version for the DSL500U ADSL USB device driver.

The driver version is 3.2.23.16

The firmware version is 7.9.148

The CSA version is 3.0.0.9

To change the PVC value, firstly open the CSA window. Then press control-shift and left click the mouse on the logo named "Aztech". The Advanced tab will be appeared. Click on the Advanced tab and then the Encap tab. The PVC value will be shown and click Save to update the PVC value. This applies to all the Oses.

Resolved Issues:

- 📁. For Win98SE the username and password is greyed out when using "Always dial my default connection" option under the Internet Properties. The issue happened on IE 5.5 and IE6.0. No issue on IE5.0.

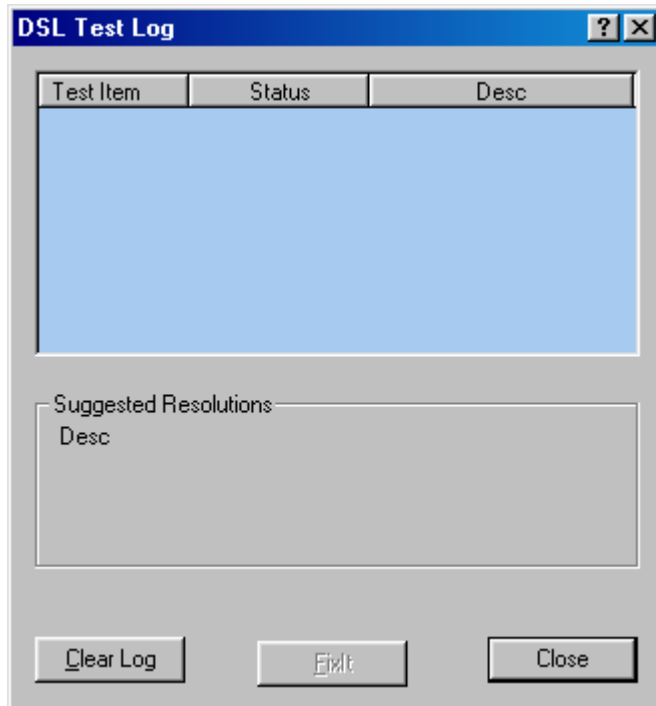
ADSL Test

Program interface:

The screenshot shows a window titled "ADSL Test" with a blue title bar and standard window controls. The interface is organized into several sections:

- 1. Interface (PC To Modem) Test**: A black square indicator and an empty text box.
- 2. Modem Test**: A black square indicator and an empty text box.
- PVC Setting**: A section containing two input fields labeled "VPI:" and "VCI:".
- 3. Modem to ADSL Line Connection Test**: A black square indicator and an empty text box.
- 4. Connection to Service Provider Network Test**: A black square indicator and an empty text box.
- Status:** An empty text box.
- Updated:** An empty text box.
- Buttons:** Three buttons at the bottom: "Start Test", "View Log", and "Close".

Log interface:



Function description:

- **Interface (PC to Modem) Test:** Testing USB interface function is normal or not, if USB interface is normal, the LED will become green.
- **Modem Test:** Testing driver is well installed, specific name of Dial-up Networking and the setting of the VPI/VCI to specific value as the value in setup.ini. If all of test is OK, the LED will become green.
- **Modem to ADSL Line Connection Test:** Modem is able to synchronize with the DSLAM (SHOWTIME is achieved). If modem is able to synchronize, the LED will become green.

Function description:

- **Connection to Service Provider Network Test:** Sending End-to-End OAM F5 Cell to the network and listen for response. Using specific name of Dial-up Network in setup.ini , get its phonebook information and then dial up to PPPoE or PPPoA server. Program will use default username and password to dial up to PPPoE or PPPoA server for network test. If the connection is established successfully, program will disconnect this connection after 1 second. If program can receive response, can establish and disconnect connection successfully, the LED will become green.
- **Start Test:** Program will start testing from Interface test, Modem test to Line test in sequence. If Interface test result is failed, program will not continue test other function. And Modem test is same.
- **FixIT:** By clicking on the FixIT some of the faults will be remedied and if the operation is successful it will be prompted OK.
- **View Log:** program will show log file about count, time ... etc. If you want to know the recommendation while you get failure in testing, please click the line to see the recommendation.
- **Close:** Close DSL test program.