

Model: DSL500U

Description: Tapisrv error on WinME with Internet Explorer 6

Date updated: 21 Apr 2003

Problem:

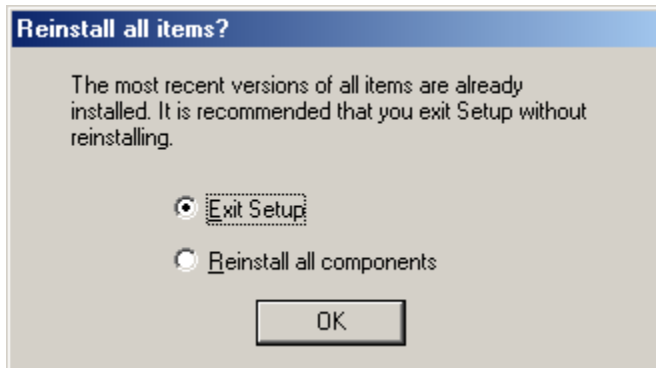
On WinME with Internet Explorer 6 SP1 installed there may have encountered Tapisrv error every time disconnects from the dial up connection. It cannot be connected again until the system is restarted.

Remedy:

Please download the ie6setup and follow the steps as described below:

1. Restart the system.
2. Dial up and connect to the ISP.
3. Run the ie6setup.
4. The system will update some of the files
5. After the files have been updated, please restart the system.

If the Internet Explorer has been fully installed, running the ie6setup again will have the below message:



If problem still exist, please reinstall all the components again.