

ADSL USB Modem

Easy Start (Read Me First)

Version 1.0

Contents...

About this Easy Start	2
Safety Guidelines	2
Package	2
Minimum System Requirements	3
LED Indicators	3
Step 1: Connecting Your ADSL USB Modem	4
Step 2: Installing Your ADSL USB Modem Driver	5
2.1 For Windows® 98 Second Edition	5
2.2 For Windows® Me	7
2.3 For Windows® XP	8
2.4 For Windows® 2000	9
Step 3: Configuring the IP Settings (For RFC 1577 protocol only)	11
3.1 For Windows® XP	11
3.2 For Windows® Me/98 Second Edition .	12
3.3 For Windows® 2000	12
Step 4: Setting PVC Values	14
Step 5: Dial-Up to the Internet (for RFC 2364 and RFC 2516 users)	15

Product warranty does not apply to damage caused by lightning, power surges or wrong voltage.

Safety Guidelines

- Keep the modem away from fluid, direct sunlight and excessive heat.
- During times of lightning strike/thunderstorm, do not use the modem.
- This product is for use only in UL Listed computers.
- To reduce the risk of fire, use only No. 26 AWG or larger telecommunication line cord.

About this Easy Start

This booklet contains information on setting up your ADSL USB Modem. It touches on the key installation procedures to help you setup your modem !



On commonly asked questions or for problems encountered during the setting up / running of your modem, please refer to the **Frequently Asked Questions** located in the **Manuals** folder on your Installation CD.

Package

If you found any missing items, please contact your dealer immediately.

(The actual cables that are included with your package may differ in appearance from country to country)

1

ADSL
USB
Modem

**2**

Installation CD

**3**

USB cable

**4**

this Easy Start

5

Telephone extension cable

**6**

Micro-Filter (optional) ¹



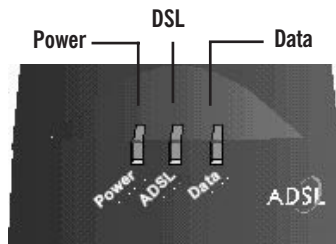
¹ Micro-Filter can be purchased separately from your dealer.

Minimum System Requirements

- IBM PC-based computer with Pentium® 233 processor MMX
- 32MB RAM
- 20MB hard disk space (system files and modem driver only)
- A free USB Port
- CD-ROM drive
- Windows® 98 Second Edition / Windows® Me / Windows® XP / Windows® 2000

LED Indicators

The LED indicators show the status of the following:



Power : **Lights up** when power is supplied via the USB port from your PC.

ADSL : **Lights up** when the ADSL line is established.

: **Blinks** when no line is connected or ADSL line is not established.

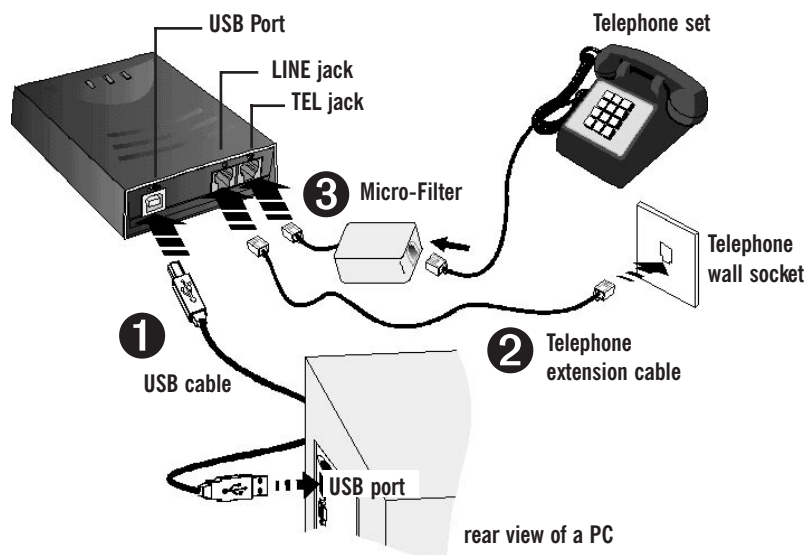
Data : **Blinks** when the modem is transmitting/receiving data.



: **Lights up** when modem is installed.

Step 1: Connecting Your ADSL USB Modem

With the "Hot Swap" feature in this modem, you can connect your modem to your computer anytime, without having to power off your system!

Carry out the connections as illustrated.



- ❶ Connect one end of the **USB cable** () to the **USB Port** on the **modem** and the other end () to the **USB port of your computer**.
- ❷ Connect one end of the **telephone extension cable** to the **Line Jack** on the **modem** and the other end to a **telephone wall socket**.
- ❸ Connect a **Micro-Filter** (can be purchased separately from your dealer) to the **TEL Jack** on the modem. Then connect your **Telephone Set** to the Micro-Filter. (The optional connection to the telephone set provides easy access to the phone while working near the modem. The connection of the Micro-Filter is not required if you are not connecting to a Telephone Set).

2 For details on the usage of the Micro-Filter, please refer to the Frequently Asked Question, 'Do I need to use Micro-Filter when using ADSL ?' on the Installation CD (manuals folder).

Step 2: Installing Your ADSL USB Modem Driver

The following contains the driver installation instructions for the protocols **RFC 1483**, **RFC 2364**, **RFC 1577** and **RFC 2516**. You only need to install one of them, as determined by your ADSL Service Provider.



The screen shots, screens information and steps illustrated in this manual serve only as a guide. The exact information and steps you see on your system may vary, depending on your system configurations. For any dissimilarities, follow closely to the instructions as prompted on your PC screen.

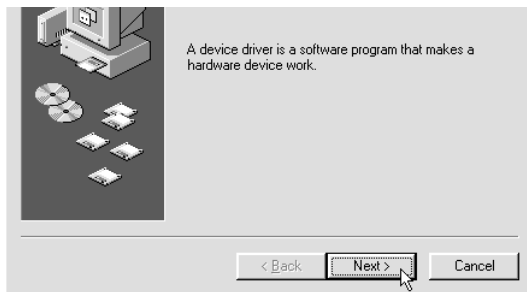
Power on your computer (if it is not powered on during connection). If you have connected the USB cable from your computer to your modem as illustrated in [Step 1](#), you will be prompted with the following window to install the driver.

2.1 For Windows® 98 Second Edition

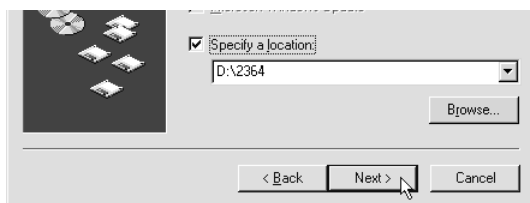


You may be prompted for your Windows CD-ROM during the driver installation. Have it ready by your side.

- i. Place the **Installation CD** into your CD-ROM Drive and click [Next](#).

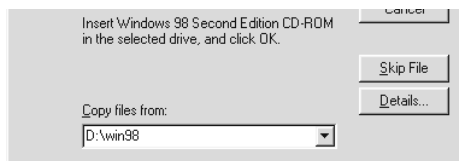


- ii. Select **Search for the best driver for your device (Recommended)** and click **Next**.
- iii. Click **Specify a location**.
Click **Browse** and navigate to either the folder '\RFC1483', '\RFC2364', '\RFC1577' or '\RFC2516' (depending on your ADSL Service Provider) on your Installation CD and click **Next**.



(The example is based on RFC 2364)

- iv. Click **The updated driver (Recommended) ADSL USB Modem** and click **Next**.
- v. Click **Next** again to proceed with installation with the specified driver.
- vi. You will be prompted for your Windows CD-ROM. Place your Windows CD-ROM in your CD-ROM Drive. Enter the path of your Windows CD-ROM and click **OK**.



- vii. A screen indicates installation process is going on.
- viii. Restart your system to finish the installation.
- ix. After Windows rebooted, system will continue to copy the required files. You will be prompted for your Windows CD-ROM again. Follow the instructions prompted.
- x. **For RFC 1483 users**
Please install a third-party dial-up utility for your modem as required by your ADSL Service Provider.

For RFC 2364 and RFC 2516 users

Upon successful installation, you will see a **ADSL USB Modem Dial-Up** shortcut icon generated on your desktop. You may now proceed with **Step 5 - Dial-Up to the Internet**.

For RFC 1577 users

For RFC1577 protocol, please proceed with **Step 3 - Configuring the IP Settings**.

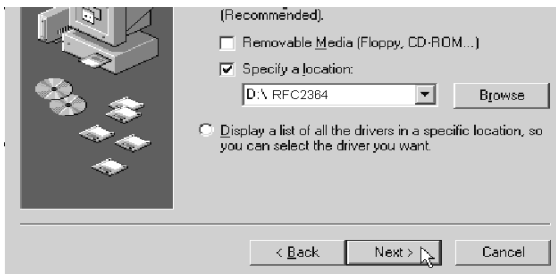
2.2 For Windows® Me

- i. Place the **Installation CD** into your CD-ROM Drive. Select **Specify the location of the driver (Advanced)** and click **Next**.



- ii. Click **Specify a location**.

Click **Browse** and navigate to either the folder '\RFC1483', '\RFC2364', '\RFC1577' or '\RFC2516' (depending on your ADSL Service Provider) on your Installation CD and click **Next**.



(The example is based on RFC 2364)

- iii. Click **Next** again to proceed installation with the specified driver.
- iv. A screen indicates installation process is going on.
- v. Restart your system to finish the installation.
- vi. At the prompt for restart, click **Yes**.
- vii. After Windows rebooted, system will continue to copy the required files. Windows will then again prompt you for restart. Restart your system.

viii. **For RFC 1483 users**

Please install a third-party dial-up utility for your modem as required by your ADSL Service Provider.

For RFC 2364 and RFC 2516 users

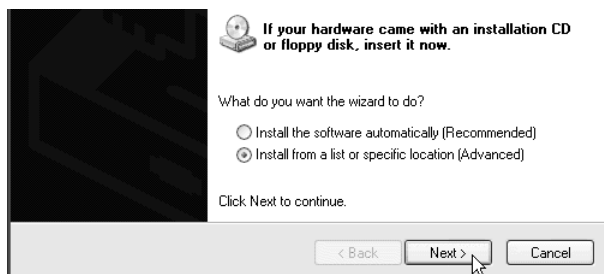
After Windows rebooted, you will see a **ADSL USB Modem Dial-Up** shortcut icon generated on your desktop. You may now proceed with **Step 5 - Dial-Up to the Internet**.

For RFC 1577 users

For **RFC1577** protocol, please proceed with **Step 3 - Configuring the IP Settings**.

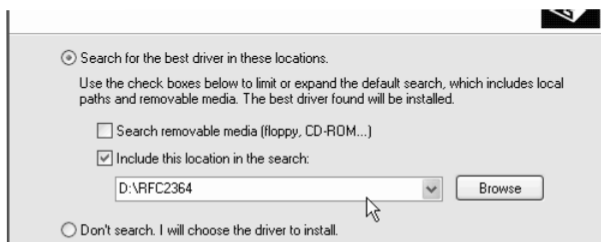
2.3 For Windows® XP

- i. Place the **Installation CD** into your CD-ROM Drive. At the following prompt, select **Install from a list or specific location (Advanced)** and click **Next**.



- ii. Click **Include this location in the search**.

Click **Browse** and navigate to either the folder **'RFC1483'**, **'RFC2364'**, **'RFC1577'** or **'RFC2516'** (depending on your ADSL Service Provider) on your Installation CD and click **Next**.



(The example is based on RFC 2364)

- iii. A screen indicates installation process is going on.
- iv. No restart is needed and installation is completed.
- v. **For RFC 1483 users**
Please install a third-party dial-up utility for your modem as required by your ADSL Service Provider.

For RFC 2364 and RFC 2516 users

Upon successful installation, you will see a **ADSL USB Modem Dial-Up** shortcut icon generated on your desktop. You may now proceed with **Step 5 - Dial-Up to the Internet**.

For RFC 1577 users

For **RFC1577** protocol, please proceed with **Step 3 - Configuring the IP Settings**.

2.4 For Windows® 2000

- i. Place the **Installation CD** into your CD-ROM Drive and click **Next**.



- ii. Click **Search for a suitable driver for my device (recommended)** and click **Next**.
- iii. Select **Specify a location** and click **Next**.
- iv. Click **Browse** and navigate to either the folder '**RFC1483**', '**RFC2364**', '**RFC1577**' or '**RFC2516**' (depending on your ADSL Service Provider) on your Installation CD and click **Next**.



(The example is based on RFC 2364)

- v. Click **Next** to proceed installation with the specified driver.
- vi. A screen indicates installation process is going on.
- vii. No restart is needed and installation is completed.
- viii. After Windows rebooted, system will continue to copy the required files.
- ix. **For RFC 1483 users**
Please install a third-party dial-up utility for your modem as required by your ADSL Service Provider.

For RFC 2364 and RFC 2516 users

Upon successful installation, you will see a **ADSL USB Modem Dial-Up** shortcut icon generated on your desktop. You may now proceed with **Step 5 - Dial-Up to the Internet**.

For RFC 1577 users

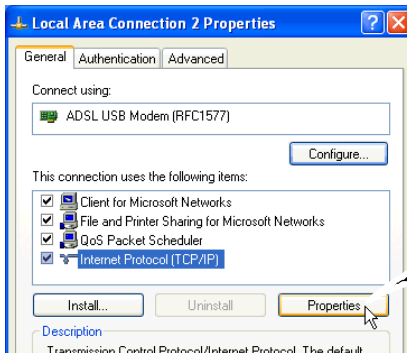
For **RFC1577** protocol, please proceed with **Step 3 - Configuring the IP Settings**.

Step 3: Configuring the IP Settings (For RFC 1577 protocol only)

3.1 Configuring the IP Settings - For Windows® XP

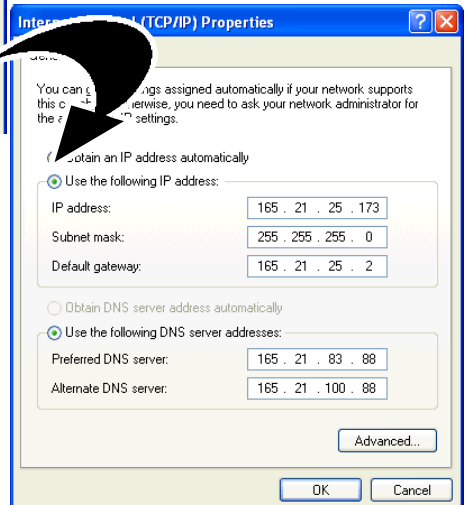
(Instructions are based on default Start menu option)

- i. From your Windows taskbar, click **Start** > **More Programs** > **Accessories** > **Communications** > **Network Connections**.
- ii. From **Other Places**, click **My Network Places**. Right-click on the **LAN Area Connection** and select **Properties**.
- iii. Ensure that the field **Connect Using** indicates **ADSL USB Modem**.
(This verification is important as you may more than one **Local Area Connection** icons installed in your system).



Select **Internet Protocol (TCP/IP)** and click **Properties**.

(Addresses shown here are examples)



- iv. Click **Use the following IP address**. Enter the addresses as given by your ADSL Service Provider. Click **Use the following DNS server addresses**. Enter the DNS server addresses as given by your ADSL Service Provider. Click **OK**. Click **OK** again to close.

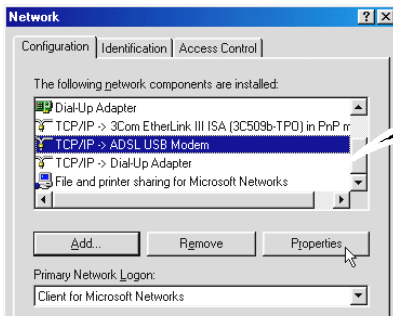
Restart your system when prompted.

Proceed with **Step 4** to set the VPI and VCI values.

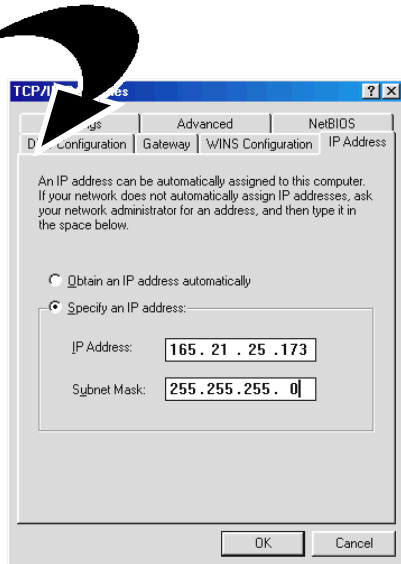
3.2 Configuring the IP Settings

• For Windows® Me / Windows® 98 Second Edition

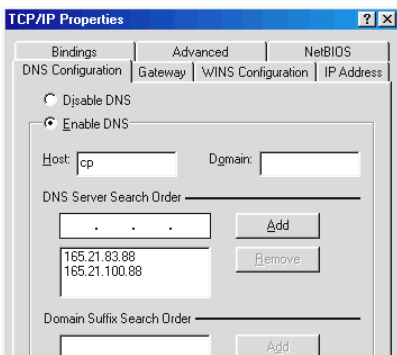
- i. From your Windows desktop, right-click on the **Network Neighborhood** icon. Select **Properties**.
- ii. From the **Configuration** tab, select **TCP/IP-> ADSL USB Modem** and click **Properties**.



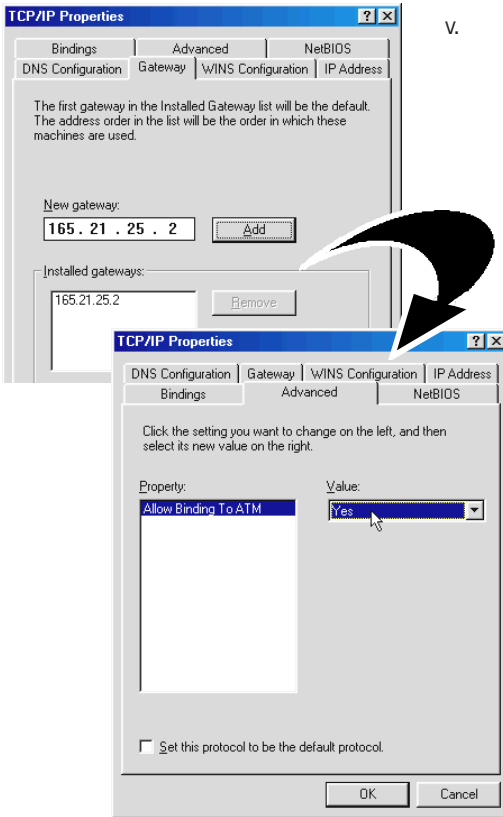
- iii. Select the **IP Address** tab.
Click **Specify an IP address**.
Enter the addresses as given by
your ADSL Service Provider.
(Addresses shown here
are examples)



(Addresses shown here are examples)



- iv. Select **DNS Configuration** tab.
Click **Enable DNS**.
Enter the **Host** name.
Enter the **DNS Server Search Order**.
addresses and click **Add**. (Values to be
provided by your ADSL Service Provider)



- v. Select the **Gateway** tab.
Enter the **New Gateway** address assigned by your ADSL Service Provider and click **Add**.

- vi. Select **Advanced** tab.
Select **Yes** from the **Value** drop-down list and click **OK**.

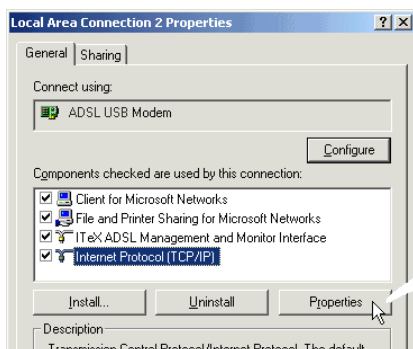
Proceed with **Step 4** to set the VPI and VCI values.

3.3 Configuring the IP Settings - For Windows® 2000

- i. From your Windows desktop, right-click on the icon **My Network Places**. Select **Properties**.

At the **Network and Dial-up Connections** window, right-click on the **Local Area Connection** icon and select **Properties**.

- ii. Ensure that the field **Connect Using** indicates **ADSL USB Modem**.
(This verification is important as you may more than one **Local Area Connection** icons installed in your system).



Select **Internet Protocol (TCP/IP)** and click **Properties**.

- iii. Click **Use the following IP address**. Enter the addresses as given by your ADSL Service Provider.

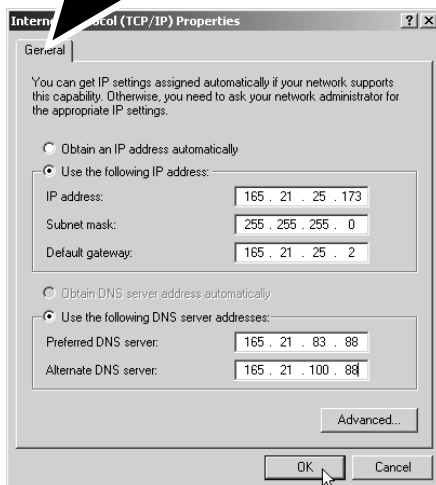
Click **Use the following DNS server addresses**. Enter the DNS server addresses as given by your ADSL Service Provider.

Click **OK**.

Click **OK** again to close.

Restart your system when prompted.

Proceed with **Step 4** to set the VPI and VCI values.



(Addresses shown here are examples)

Step 4: Setting the PVCs values


Follow the below instructions to update the PVC values.

- i. Open the **CSA tray** icon on the system tray. Then press control-shift and left click the mouse on the logo named “**DSL**”.
- ii. The Advanced tab will be appeared. Click on the **Advanced tab** and then the **Encap tab**.
- iii. The PVC value will be shown and click **Save** to update the PVC value. This applies to all the **Oses**.

Step 5: Dial-Up to the Internet (for RFC 2364 and RFC 2516 only)



For RFC 1483 and RFC 1577 users, you need to install a third-party dial-up software to connect to the Internet.

- i. To connect to the Internet, double-click shortcut icon **ADSL USB Modem Dial-up** on the Windows desktop.
(The shortcut icon was created when you installed the modem driver successfully.)
- ii. Enter your **user name** and **password**. Click **Connect**.
- iii. Upon successful dial-up, you should be able to see an icon () displayed on the Windows system tray. Double-click on the icon.

Duration indicates the amount of time you are connected to the Internet. You may click **Disconnect** to end your session.

If you are not able to connect to the Internet, you may refer to the **Frequently Asked Questions, 'I am not able to connect to the Internet'** on your Installation CD.



On commonly asked questions or on problems encountered during setting up / when running your modem, please refer to the **Frequently Asked Questions (manuals folder)** on your Installation CD for solutions.

- All other company or product names are trademarks or registered trademarks or service marks of their respective owners.