

ADSL USB Modem

Easy Start (Read Me First)

Version 1.0

Contents...

About this Easy Start	2
Safety Guidelines	2
Package	2
Minimum System Requirements	3
Front Indicators	3
Setting Up Your ADSL USB Modem Using Plug-&-Play	4
Setting Up Your ADSL USB Modem Using Setup	8
Configuring the IP Settings (For RFC 1483 Routed users only)	13
Dial-Up to the Internet (for RFC 2364 and RFC 2516 users)	17

Product warranty does not apply to damage caused by lightning, power surges or wrong voltage.

Safety Guidelines

- Keep the modem away from fluid, direct sunlight and excessive heat.
- During times of lightning strike/thunderstorm, do not use the modem.
- This product is for use only in UL Listed computers.
- To reduce the risk of fire, use only No. 26 AWG or larger telecommunication line cord.

About this Easy Start

This booklet contains information on setting up your ADSL USB Modem. It touches on the key installation procedures



On commonly asked questions or for problems encountered during the setting up / running of your modem, please refer to the **Frequently Asked Questions & Troubleshooting Guide** located in the **Manuals** folder on your Installation CD.

Package

If you found any missing items, please contact your dealer immediately.

(The actual cables that are included with your package may differ in appearance from country to country)

1

ADSL
USB
Modem

**2**

Installation CD

**3**

USB cable

**4**

this Easy Start

5

Telephone extension cable

**6**

(For Annex A users)
Micro-Filter (optional) ¹



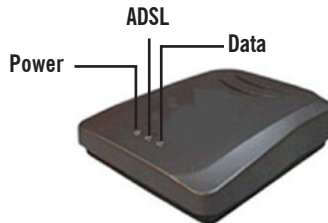
¹ Micro-Filter can be purchased separately from your dealer.

Minimum System Requirements

- IBM PC-based computer with Pentium® 233 processor
- 32MB RAM
- 20MB hard disk space (system files and modem driver only)
- A free USB Port
- CD-ROM drive
- Windows® 98 / 98 SE / Windows® Me / Windows® XP / Windows® 2000

Front Indicators

The indicators show the status for the following:



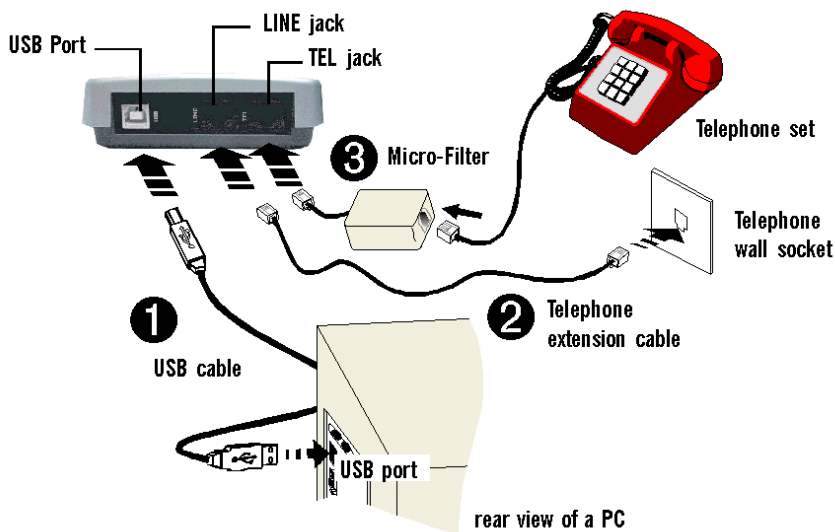
- Power** : **Lights up** when power is supplied via the USB port from your PC
- ADSL** : **Lights up** when the ADSL line is established
- Data** : **Blinks** when the modem is transmitting/receiving data





You may setup your Modem using **Plug-&Play method** (see the section, 'Setting Up Your ADSL USB Modem using Plug-&Play') **OR** with **Setup method** (see the section, 'Setting Up Your ADSL USB Modem with Setup').

Setting Up Your ADSL USB Modem Using Plug-&-Play

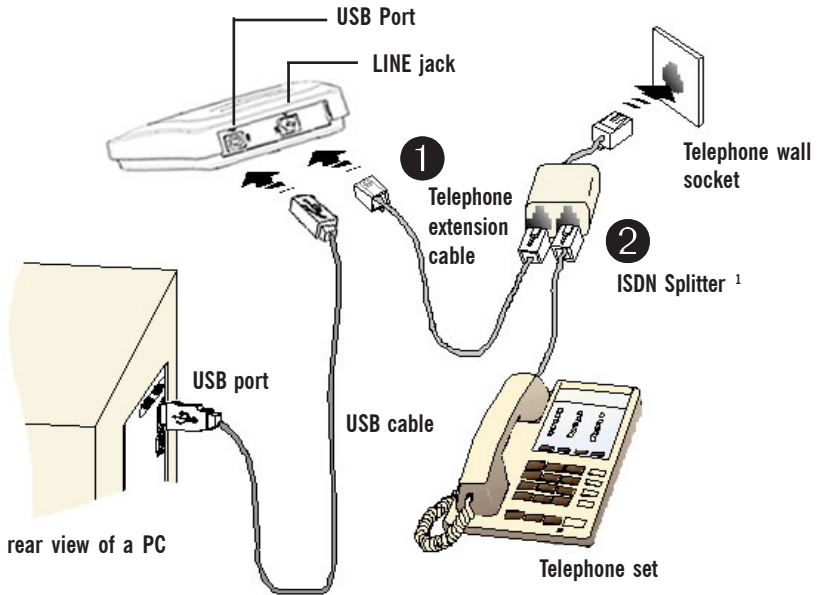
For Annex A users





- ① Connect one end of the **USB cable** () to the **USB Port** on the **Modem** and the other end () to the **USB port** on your computer.
- ② Connect one end of the **telephone extension cable** to the **Line Jack** on the **modem** and the other end to a **telephone wall socket**.
- ③ Connect a Micro-Filter² to the **TEL Jack** on the modem and then connect your **Telephone Set** to the Micro-Filter. (The connection to the telephone set is optional. The Micro-Filter is not required if you are not connecting to a Telephone Set).

² For details on the usage of the Micro-Filter, please refer to the **Frequently Asked Questions & Troubleshooting Guide** 'Do I need to use a Micro-Filter when using ADSL ?' on your Installation CD.

For Annex B users

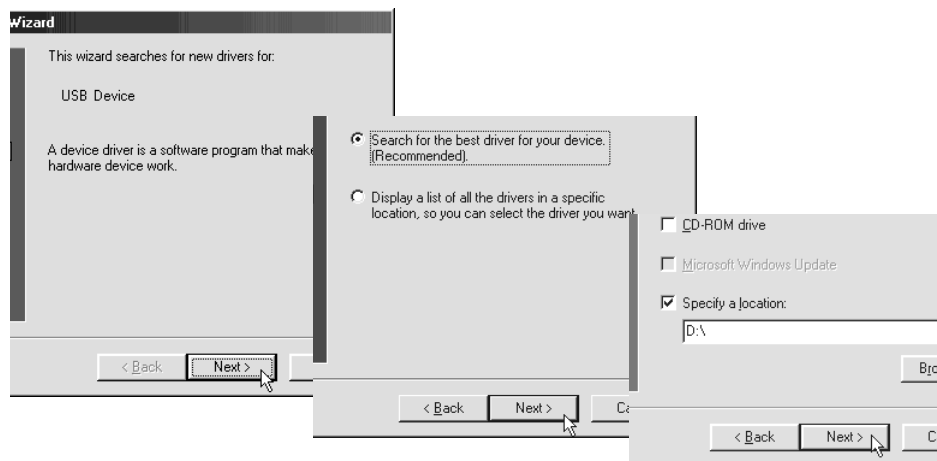


- ❶ Connect one end of the **USB cable** () to the **USB Port** on the **Modem** and the other end () to the **USB port** on your computer.
- ❷ Connect one end of the **telephone extension cable** to the **Line Jack** on the **modem** and the other end to a **ISDN Splitter**¹.
If you are not connecting to a Telephone set, the ISDN Splitter is not necessary. You can connect the telephone extension cable directly to the Telephone Wall Socket. You may then skipped point ❸ and ❹.
- ❸ Connect a **Telephone set** to the **ISDN Splitter**.
- ❹ Connect the **ISDN Splitter** to the **Telephone Wall Socket**.

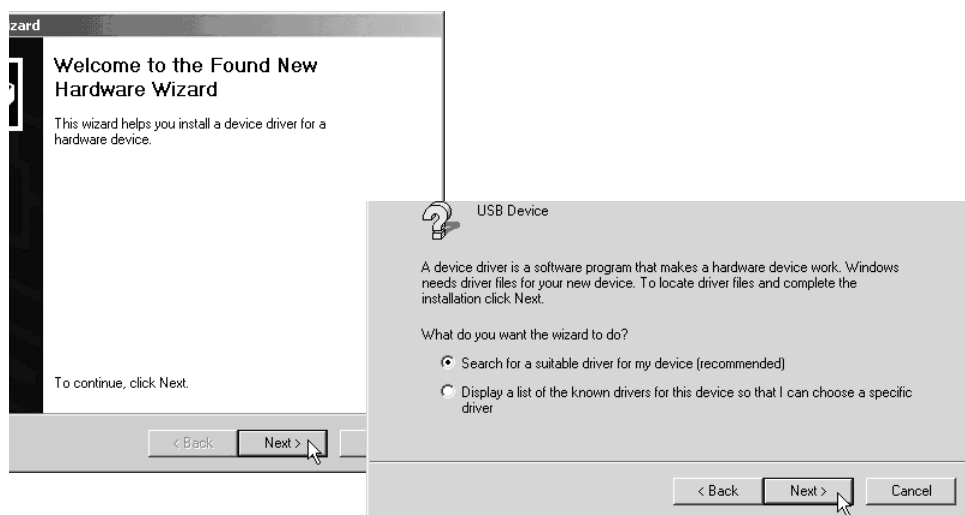
¹ The ISDN Splitter can be purchased separately from your dealer. For details on the usage of the ISDN Splitter, please refer to the **Frequently Asked Questions and Troubleshooting Guide**, 'Do I need to use an ISDN Splitter when using ADSL?'

- i Power on your computer (if it is not powered on).
- ii Windows will detect your new modem device as USB device. Place the Installation CD on your CD-ROM Drive.
- iii Click on the selections as indicated on the following screen shots.

For Windows 98 / 98 SE

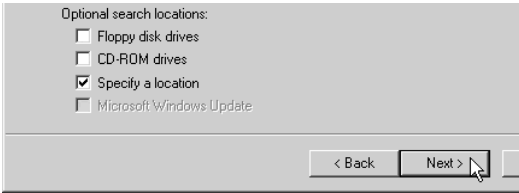


For Windows 2000

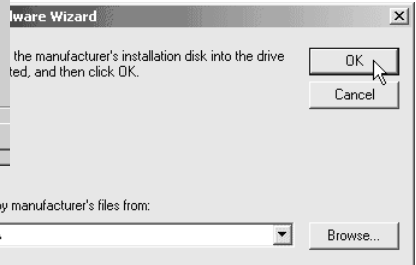


(Enter the drive letter of your CD-ROM. The example uses 'D').

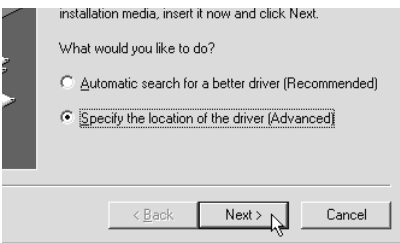
For Windows 2000 (cont'd)



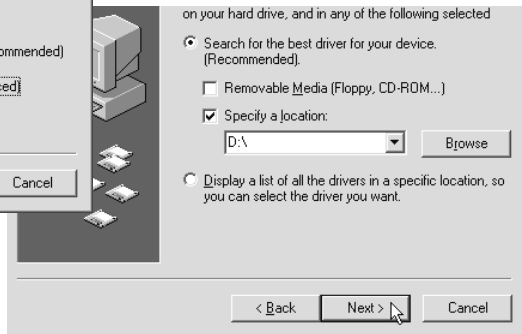
(Enter the drive letter of your CD-ROM. The example uses 'D').



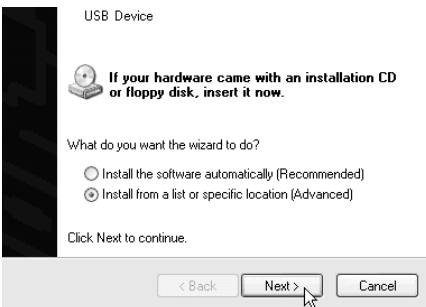
For Windows Me



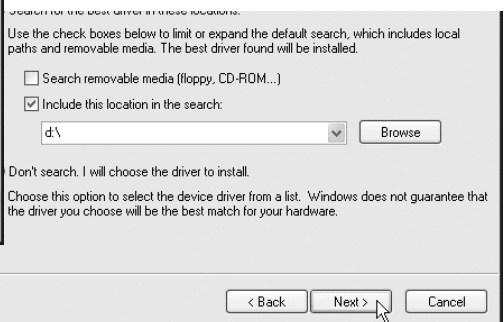
(Enter the drive letter of your CD-ROM. The example uses 'D').



For Windows XP



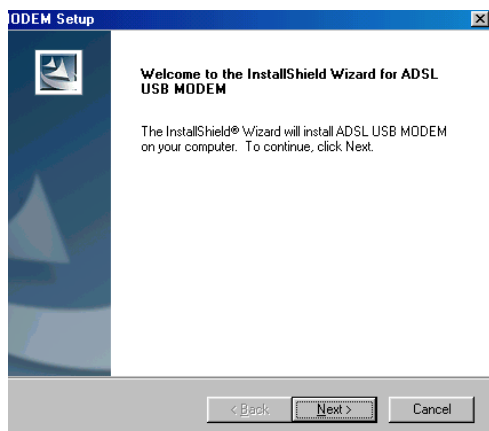
(Enter the drive letter of your CD-ROM. The example uses 'D').



- iv Proceed installation as described in [step iii](#) of 'Setting Up Your ADSL USB Modem with Setup' on the following page.

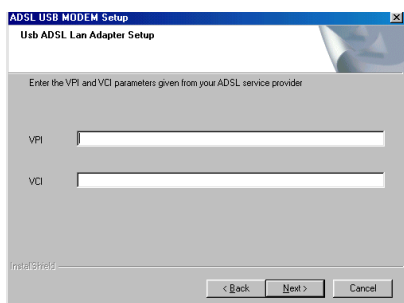
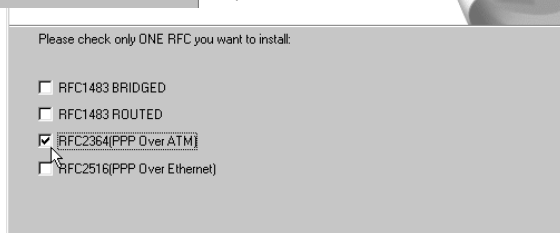
Setting Up Your ADSL USB Modem Using Setup

- i Power on your computer.
- ii If the Installation CD does not start automatically, please run the **setup.exe** program located on the CD-ROM.



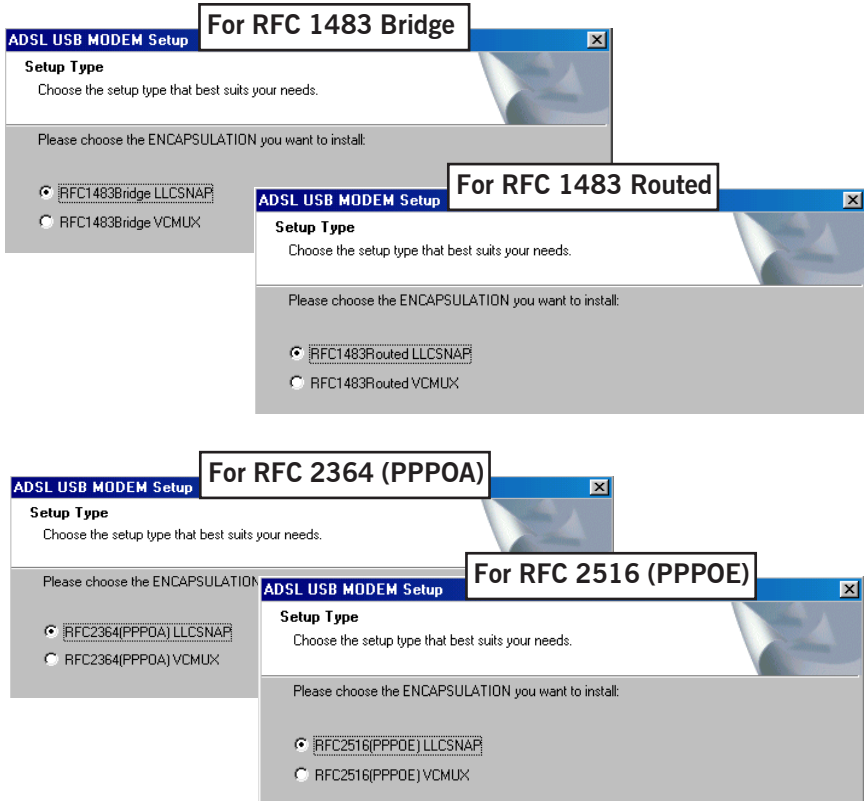
- iii You will be prompted the following installation window. Click **Next** to proceed with the modem driver setup.

- iv Select the option as determined by your ADSL Service Provider and click **Next**.



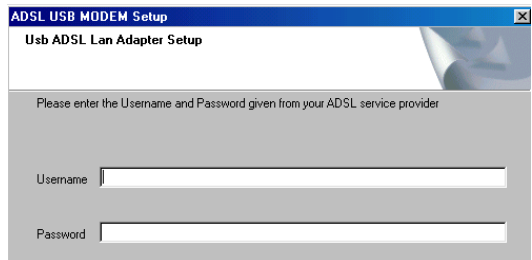
(Make sure that you select only one option as determined by your ADSL Service Provider. This screen shot uses RFC2364 as an example)

- v Depending on the option that you have selected at [step iv](#), you should see one of the following window. Select the required encapsulation option and click [Next](#).

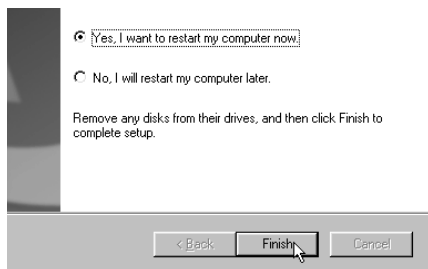


- vi **For RFC 1483 Bridged and RFC 1483 Routed users,** please proceed to [step viii](#). **For RFC2364 and RFC2516 users,** you will be prompted for your username and password.

Enter the information exactly as given by your ADSL Service Provider and click [Next](#).



- vii Allow sufficient time for Windows to copy the required files. At the prompt, click **Finish** to restart your computer.



- viii *(This step is not applicable for 'Setting Up Your ADSL USB Modem Using Plug-&-Play' method)*

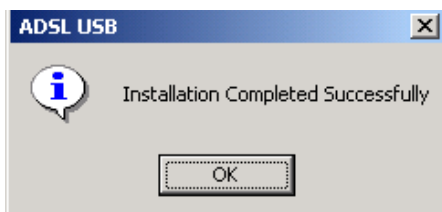
After system reboot, click **OK** at the **USB Warning**. Please carry out the connections as illustrated on page 11 for Annex A users or page 12 for Annex B users..



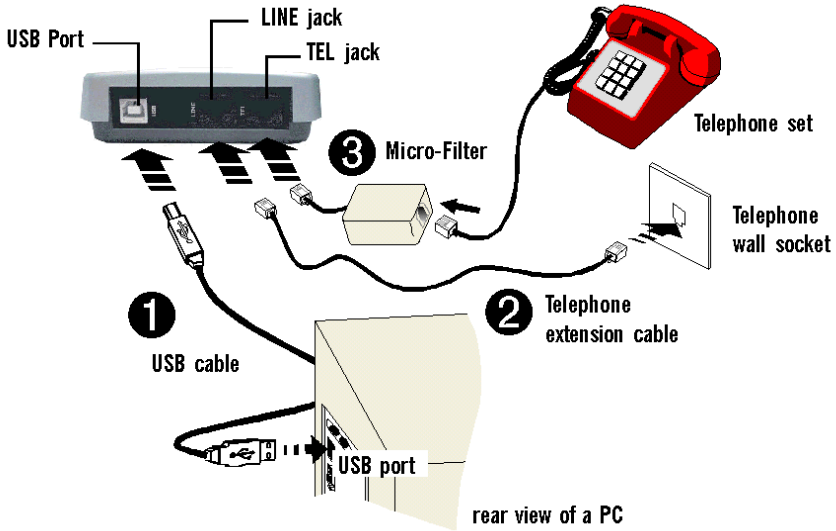
- ix **For Windows® 98 / 98 SE users**, you may be prompted for your **Windows CD-ROM**. Replace the **Installation CD** on your CD-ROM drive with **Windows 98 / 98 SE CD-ROM**.

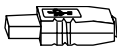

In the text box, enter the path (example **D:\win98**) of your Windows CD-ROM and click **OK**.

- x You will be prompted **Installation Completed Successfully**. Click **OK** to end.



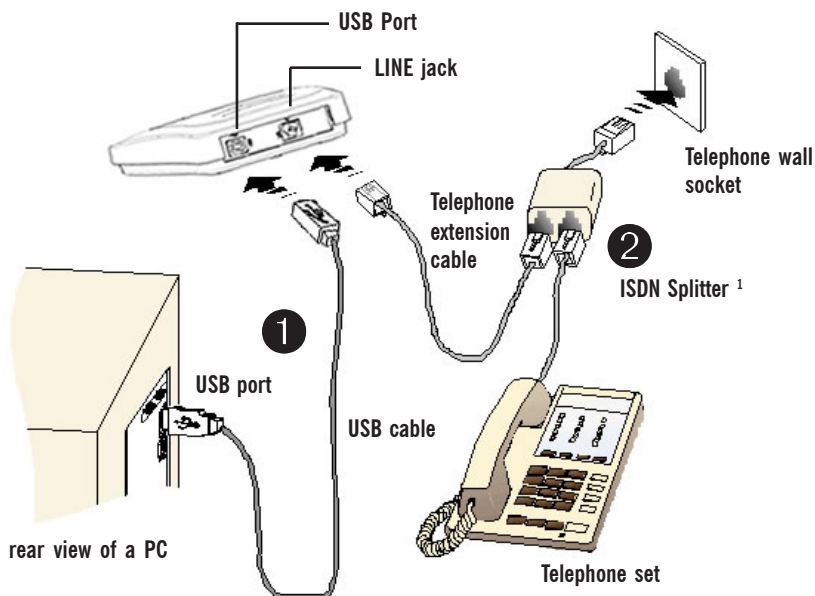
For Annex A users





- ❶ Connect one end of the **USB cable** () to the **USB Port** on the **Modem** and the other end () to the **USB port** on your computer.
- ❷ Connect one end of the **telephone extension cable** to the **Line Jack** on the **modem** and the other end to a **telephone wall socket**.
- ❸ Connect a Micro-Filter² to the **TEL Jack** on the modem and then connect your **Telephone Set** to the Micro-Filter. (The connection to the telephone set is optional. The Micro-Filter is not required if you are not connecting to a Telephone Set).

² For details on the usage of the Micro-Filter, please refer to the **Frequently Asked Questions & Troubleshooting Guide 'Do I need to use a Micro-Filter when using ADSL ?'** on your **Installation CD**.

For Annex B users



- ① Connect one end of the **USB cable** () to the **USB Port** on the **Modem** and the other end () to the **USB port** on your computer.
- ② Connect one end of the **telephone extension cable** to the **Line Jack** on the **modem** and the other end to a **ISDN Splitter**¹.
If you are not connecting to a Telephone set, the ISDN Splitter is not necessary. You can connect the telephone extension cable directly to the Telephone Wall Socket. You may then skip point ③ and ④.
- ③ Connect a **Telephone set** to the **ISDN Splitter**.
- ④ Connect the **ISDN Splitter** to the **Telephone Wall Socket**.

¹ The ISDN Splitter can be purchased separately from your dealer. For details on the usage of the ISDN Splitter, please refer to the **Frequently Asked Questions and Troubleshooting Guide**, 'Do I need to use an ISDN Splitter when using ADSL?'

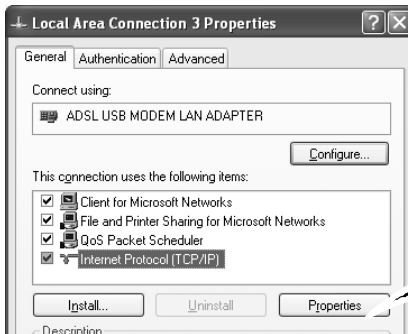
Configuring the IP Settings (For RFC 1483 Routed users only)

Configuring the IP Settings - For Windows® XP

(Instructions are based on default **Start menu** option)

- i. From your Windows taskbar, click **Start** > **More Programs** > **Accessories** > **Communications** > **Network Connections**.
- ii. From **Other Places**, click **My Network Places**. Right-click on the **LAN Area Connection** and select **Properties**.
- iii. Ensure that the field **Connect Using** indicates **ADSL USB MODEM LAN ADAPTER**.

(This verification is important as you may have more than one **Local Area Connection** icons installed in your system).

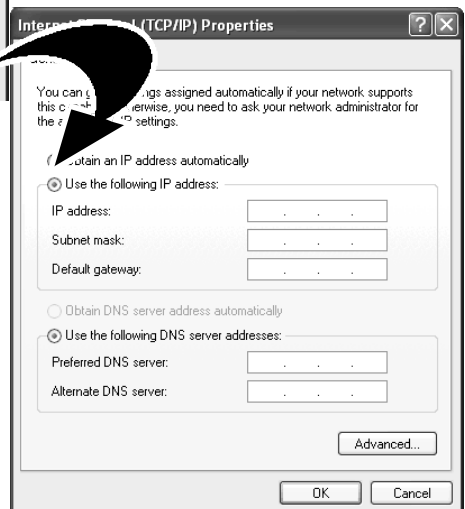


Select **Internet Protocol (TCP/IP)** and click **Properties**.

- iv. Click **Use the following IP address**. Enter the addresses as given by your ADSL Service Provider.
Click **Use the following DNS server addresses**. Enter the DNS server addresses as given by your ADSL Service Provider.
Click **OK**. Click **OK** again to close.

Restart your system when prompted.

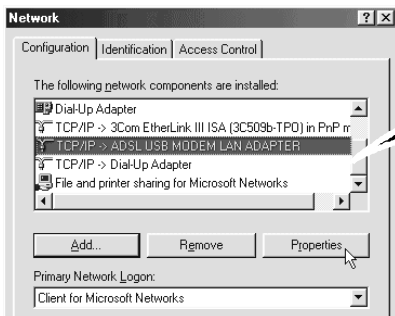
You can start surfing the Internet by launching your Internet Browser.



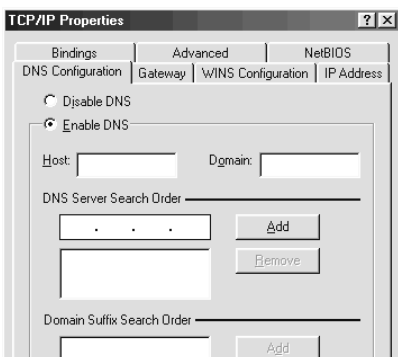
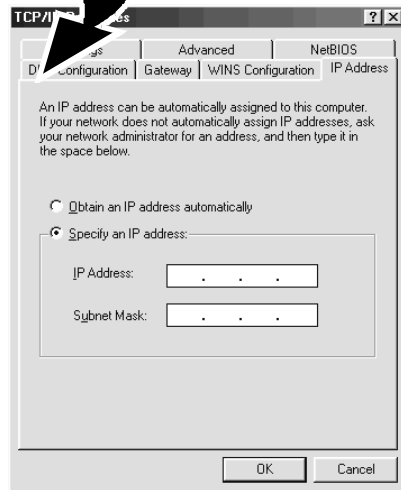
Configuring the IP Settings

• For Windows® Me / Windows® 98 / 98 SE

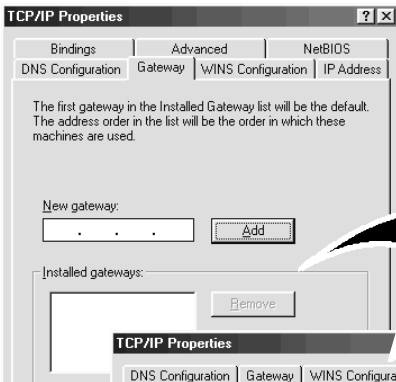
- i. From your Windows desktop, right-click on the **Network Neighborhood** icon. Select **Properties**.
- ii. From the **Configuration** tab, select **TCP/IP-> ADSL USB MODEM LAN ADAPTER** and click **Properties**.



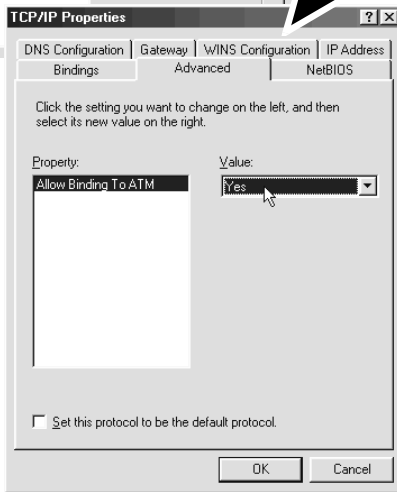
- iii. Select the **IP Address** tab.
Click **Specify an IP address**.
Enter the addresses as given
by your ADSL Service Provider.



- iv. Select **DNS Configuration** tab.
Click **Enable DNS**.
Enter the **Host** name.
Enter the **DNS Server Search Order** addresses and click **Add**. (Values to be provided by your ADSL Service Provider)



- v. Select the **Gateway** tab.
Enter the **New Gateway** address assigned by your ADSL Service Provider and click **Add**.



- vi. Select **Advanced** tab.
Select **Yes** from the **Value** drop-down list and click **OK**.

You can start surfing the Internet by launching your Internet Browser.

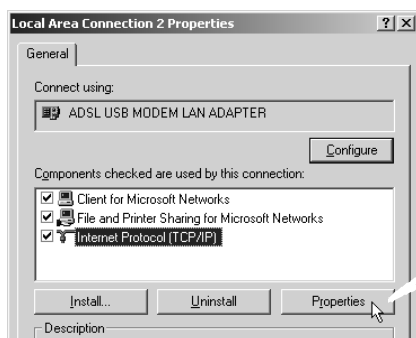
Configuring the IP Settings - For Windows® 2000

- i. From your Windows desktop, right-click on the icon **My Network Places**. Select **Properties**.

At the **Network and Dial-up Connections** window, right-click on the **Local Area Connection** icon and select **Properties**.

- ii. Ensure that the field **Connect Using** indicates **ADSL USB MODEM LAN ADAPTER**.

(This verification is important as you may have more than one **Local Area Connection** icons installed in your system).



Select **Internet Protocol (TCP/IP)** and click **Properties**.

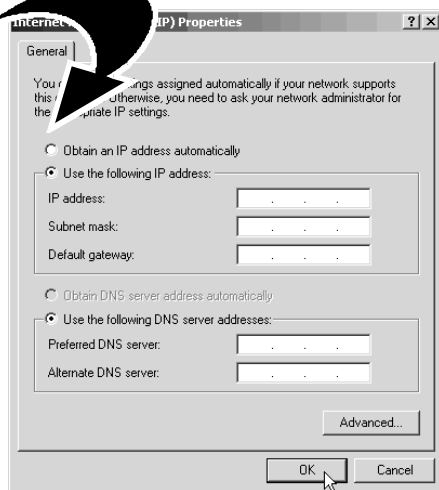
- iii. Click **Use the following IP address**. Enter the addresses as given by your ADSL Service Provider.

Click **Use the following DNS server addresses**. Enter the DNS server addresses as given by your ADSL Service Provider.

Click **OK**.

Click **OK** again to close.

Restart your system when prompted.




You can start surfing the Internet by launching your Internet Browser.

Dial-Up to the Internet

(for RFC 2364 and RFC 2516 users)



For RFC 1483 Bridge users, please install a third-party dial-up utility for your modem as required by your ADSL Service Provider.

- i. To connect to the Internet, double-click on the shortcut icon **ADSL USB MODEM DIAL-UP** on your Windows desktop.
(The shortcut icon was created when you have installed the modem driver successfully.)
- ii. Click **Connect**.
- iii. Upon successful dial-up, you should be able to see an icon  displayed on your Windows system tray. Double-click on the icon.
Duration indicates the amount of time you are connected to the Internet. You may click **Disconnect** to end your session.

If you are not able to connect to the Internet, please refer to the **Frequently Asked Questions & Troubleshooting Guide**, '*I am not able to connect to the Internet.*' on your Installation CD.

- All other company or product names are trademarks or registered trademarks or service marks of their respective owners.