

SOUTHERN INTERCHANGE UPDATE

28 January 2021

Changes ahead for roundabout construction

Earthmoving machines will begin building the raised roundabout at Cherry Lane in mid February – and the ramps to tie in Cherry Lane and Cambridge Road.

New three-way traffic signals will be installed soon to control one-way traffic entering from Cambridge Road, Cherry Lane and Seabrook Lane.

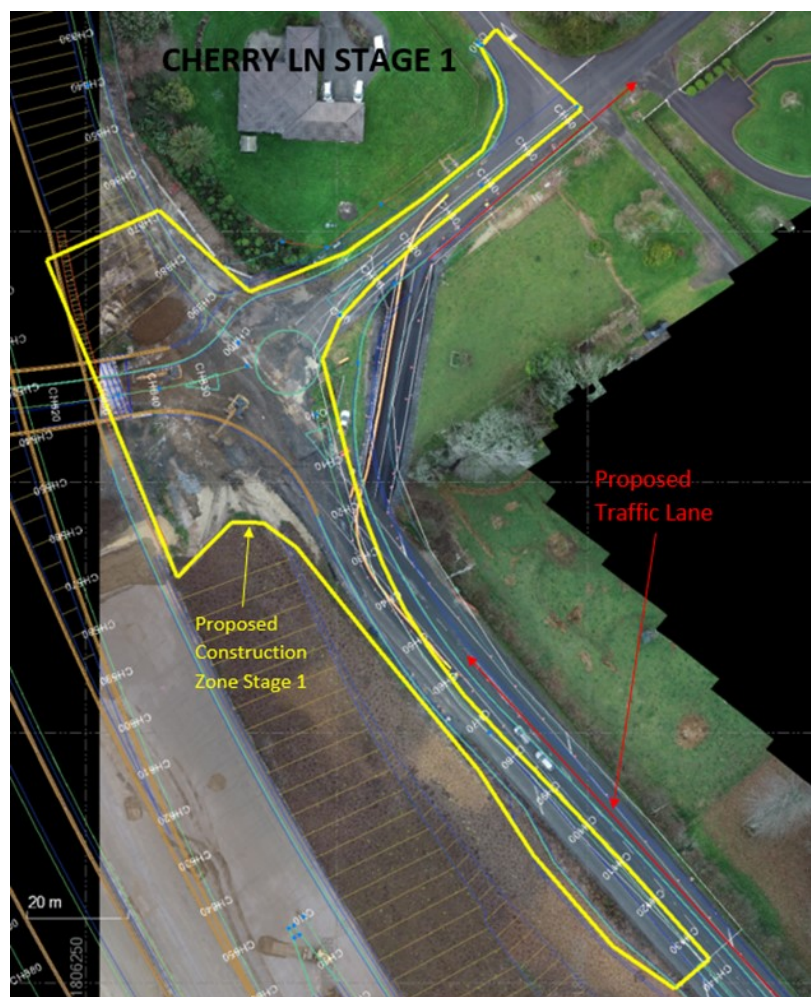
The roundabout will be constructed in two stages.

STAGE 1

The yellow lines in this graphic show the approximate boundaries of the Stage 1 construction zone. The roundabout and ramps within the yellow lines will be built to near final levels.

The Stage 1 traffic lane will be a realigned version of what is currently in place.

(See Stage 2 details overleaf.)



STAGE 2

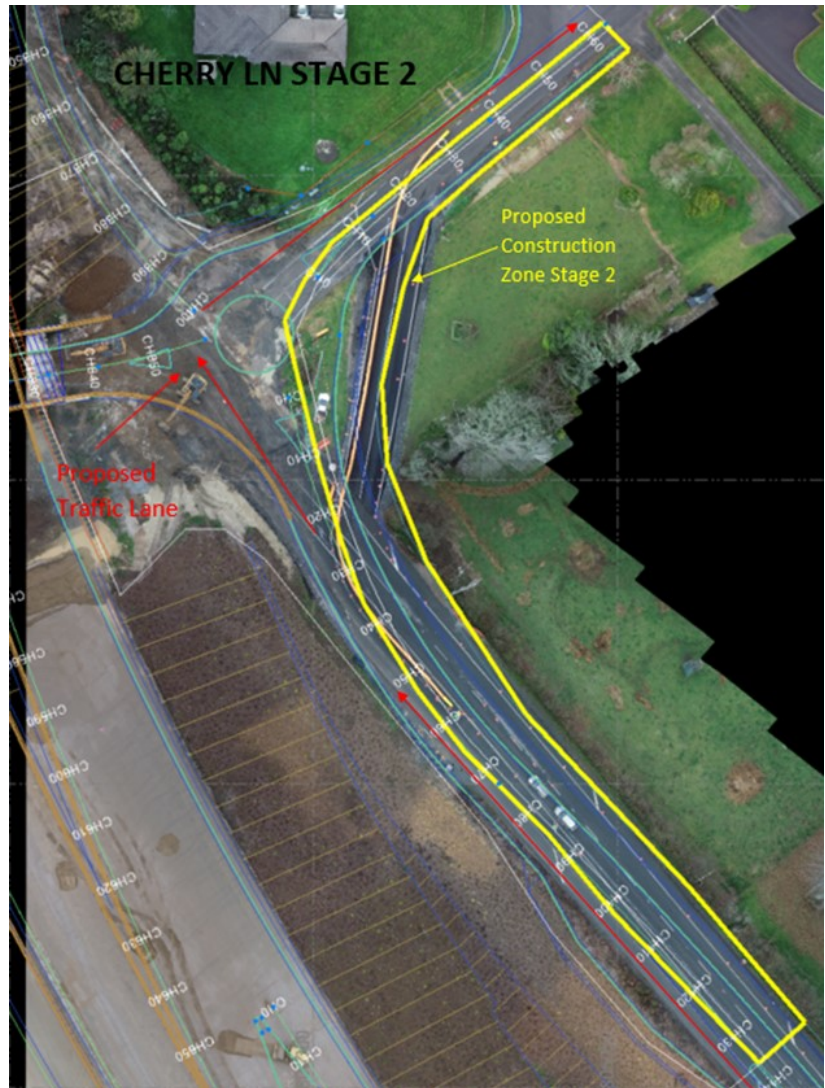
Stage 1 earthworks are expected to be finished by late March but this timeline is weather dependent. A temporary road pavement will be built on top. Local traffic will be shifted to run over Stage 1 before construction of Stage 2 begins.

Earthworks will be followed by service relocations, drainage installation and pavement construction. Final completion is expected in 7-8 months.

Residents can expect an increase in truck traffic as sand and metal is delivered to the construction site. Please take care driving near trucks and moving plant.

The yellow lines on this graphic show the boundaries of the Stage 2 construction zone. We will continue to keep you updated as construction progresses.

Please contact us if you need more information.



Hamilton Section



Fletcher

HIGGINS

BECA

coffey

LLBL

CONTACT US:

Email info@cityedgealliance.co.nz

Phone 0800 322 044

Website: www.nzta.govt.nz/hamilton

