

# Hamilton Section



May 2016

## PM marks start of the Hamilton section

Work on the Waikato's largest roading project is under way Prime Minister Rt Hon John Key and Minister of Transport Hon Simon Bridges turning the first sod on the Hamilton Section.



L-R- NZ Transport Agency Chief Executive Fergus Gammie, Waikato MP Lindsay Tisch, Minister of Transport Hon Simon Bridges, Hamilton East MP David Bennett, Hamilton City Mayor Julie Hardaker, Prime Minister Rt Hon John Key, Transport Agency Regional Director, Waikato Bay of Plenty, Harry Wilson, Transport Agency Hamilton Highway Manager Kaye Clark, Waikato District Mayor Allan Sanson, Son of the Tumuaki Hone Thompson, Waikato Regional Council Chairwoman Paula Southgate, Waikato Tainui Chairman Rahui Papa.

The 21.8 kilometre long Hamilton section of the Expressway is the largest roading project to be undertaken in the Waikato's history.

The project includes 17 bridges, five interchanges and walking and cycle paths.

Over the last four months the project team have been working on the detailed design and construction programme for the project and developing their management plans. These plans and programme detail how the project will be constructed, what areas the team will be working in and when, how the earthworks and bridges will be staged and how they'll be managing the environment around the project including what traffic management will be needed.

Other work happening over the next three months includes cutting access tracks, building the haul road at the northern end of the project, clearing vegetation and fencing the project boundaries and installing environmental controls. The team are starting on the haul road at the northern end of the project early so they are ready to start earthworks in this area when the project starts full construction in October.

The project team has moved into a temporary office in London Street in Hamilton until the full site office is up and running. The full site office will eventually house a visitor information centre where the community can learn more about the project.



Hamilton Section Project Alliance



### Keeping you informed

Keeping the community informed about progress on the Hamilton section is important to the project team.

We will be keeping you up to date via these quarterly newsletters and regular letter drops and information flyers to residents about localised works happening in their area.

We will also be holding information days once the detailed design for the project is complete so you can come and meet the project team and ask any questions.



Follow us on Facebook  
[Facebook.com/waikatoexpressway](https://www.facebook.com/waikatoexpressway)



To sign up for our email newsletters go to  
[www.nzta.govt.nz/hamilton](http://www.nzta.govt.nz/hamilton)

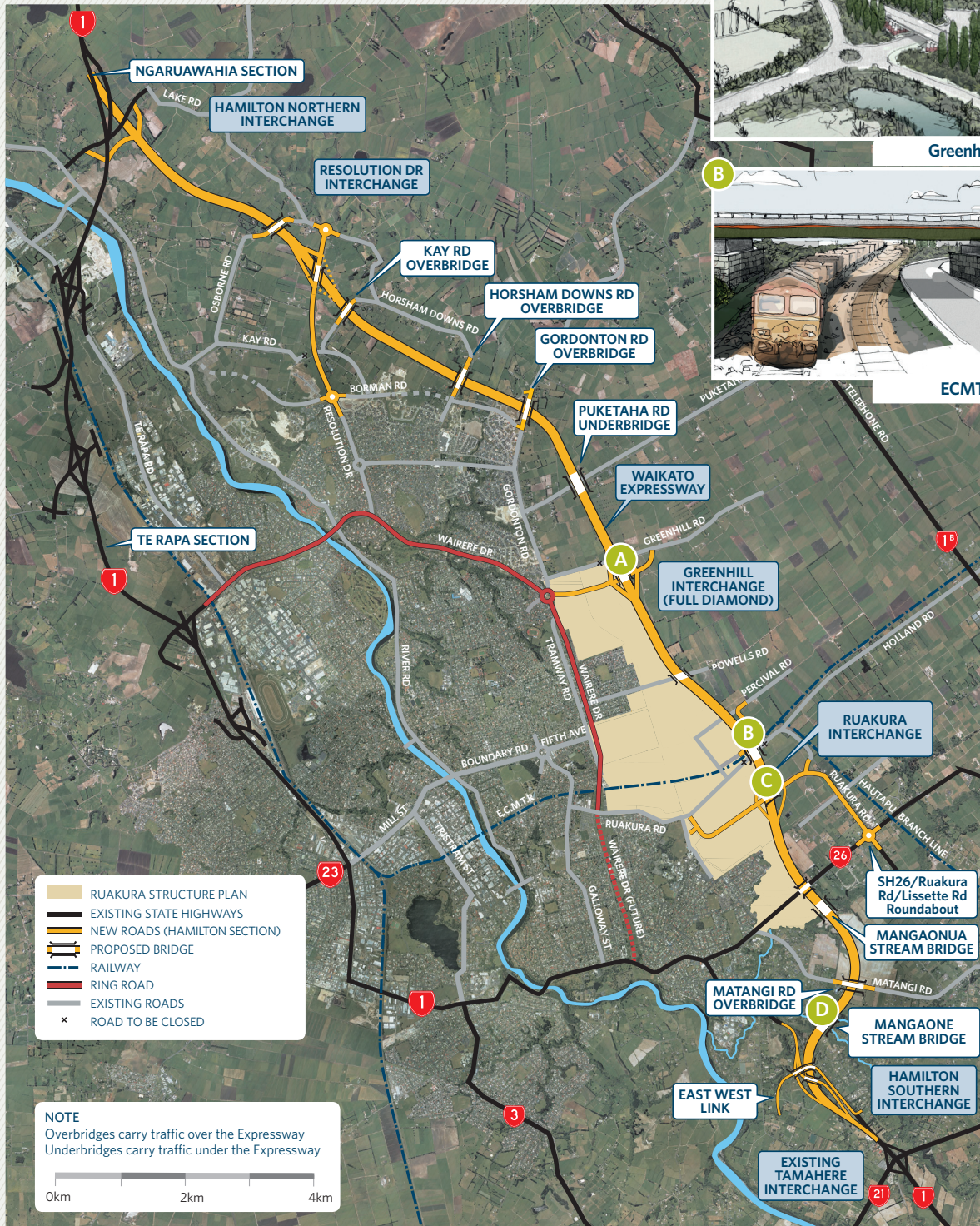
## Project benefits

The Waikato Expressway will:

- Reduce travel times between Auckland and south of Cambridge by up to 35 minutes
- Significantly reduce the number of fatal and serious injury crashes
- Increase the highway's capacity and passing opportunities
- Reduce traffic congestion and improve safety within smaller communities like Huntly, Ngaruawahia and Cambridge by significantly removing through traffic
- Reduce fuel costs and contribute to economic growth
- The Hamilton section will reduce congestion and improve safety on Hamilton local road network by significantly reducing through traffic.



# Project overview map

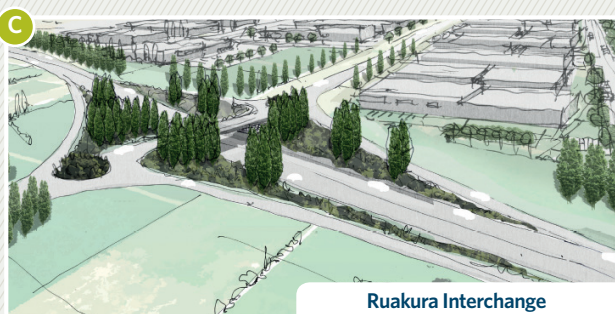


Greenhill Interchange



ECMT Rail Bridge

This map is based on the specimen design for the Hamilton section. The Alliance is currently developing the detailed design for the project and will be presenting these designs publicly towards the end of the year.



Ruakura Interchange



Mangaone Gully Bridge



## Geotech investigations under way

While some enabling works have started, full construction activity on the project is not expected to begin until October 2016.

Enabling works under way include:

- Geotech crews drilling and testing soils along the length of the alignment and in the gullies to prepare for building 17 bridges
- Construction of access tracks for construction vehicles
- Survey of the alignment
- Fence relocation
- Underground and overhead service relocation
- Vegetation removal
- Building demolition

The project team will also be transferring 27,000 cubic metres of material from the Hamilton City Council's Kay Road Reservoir site to use on the Expressway.

The material has been used to compact soils at the reservoir prior to construction. A temporary road will be built between the reservoir and the site to transport the material which means the City Council doesn't have to remove it and it is not transported on local roads.



Geotechnical investigations are under way across the project

## Archaeologists unearth early farming history

Archaeologists from Opus have been unearthing some interesting finds as part of the preliminary work on the Hamilton section. Archaeological digs have taken place at Matangi, Tamahere and near Lake Road.



The "Squircle" uncovered at Matangi

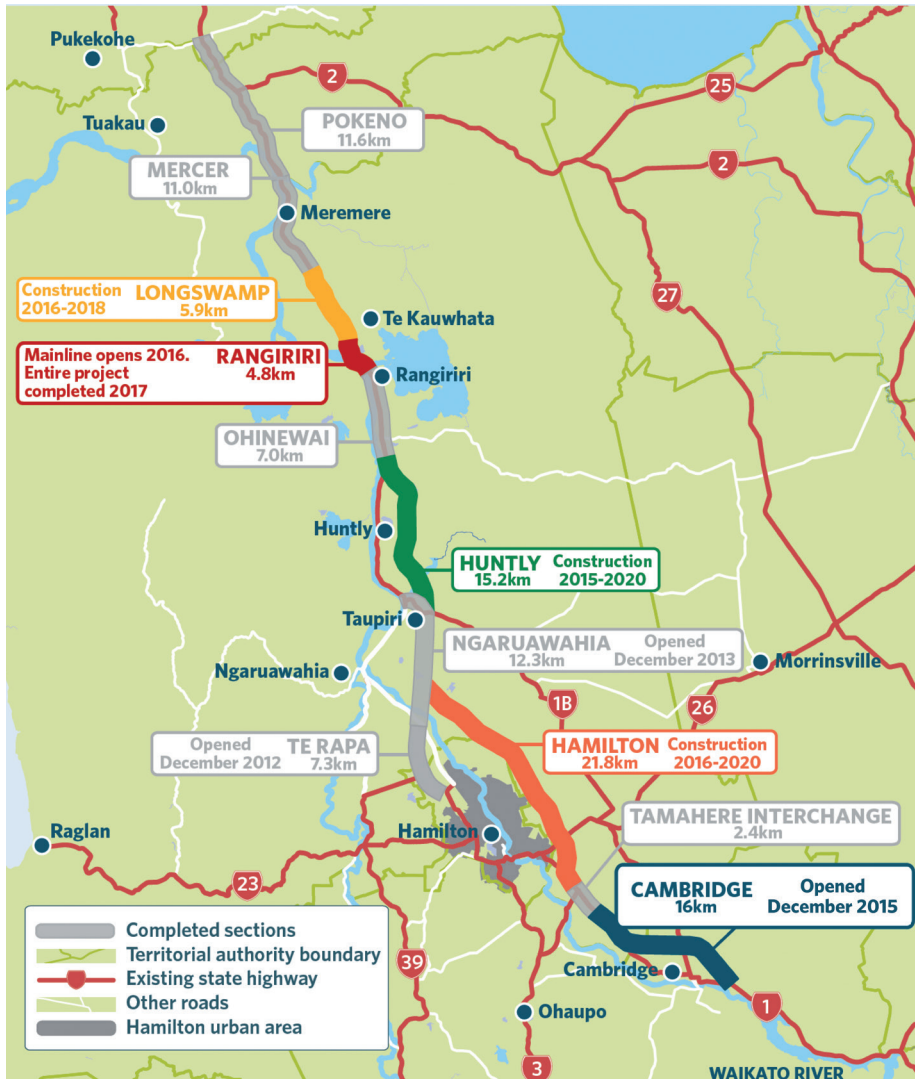
Tamahere's early farming history was uncovered in their excavation work within the planned route near Matangi. The foundation remains of a number of buildings used for housing and farm activity were found. The main most notable feature was a double ditch which together with a bank would have enclosed the main part of the farm keeping it free of stock.

An unusual square/circle foundation trench about 10 metres in diameter was also found, dubbed 'The Squircle' by the excavation crew. It was possibly used for an aerial cableway (flying fox) to access the opposite side of the gully, or a windmill to extract water from the gully base.

The site has been initially dated between 1870s and 1890s through the artefacts uncovered. Further research has identified that the site was first farmed by Patrick Leslie. Originally from Aberdeenshire in Scotland, Leslie owned about 1000 acres in Tamahere. He named the estate 'The Wartle', after his home of Warthill.

# Expressway overview map

The Waikato Expressway is one of the Government's seven Roads of National Significance. It will improve safety and reliability, and reduce travel times and congestion on State Highway 1 by delivering a four-lane highway from the Bombay Hills to south of Cambridge. The Expressway is being built in seven sections.



## Did you know?

- The Hamilton section will require up to 4 million cubic metres of earthworks.
- It will use 1.3 million tonnes of aggregate.
- Approximately 12 months after the project opens to traffic 1 million square metres of OGPA, (Open Grade Porous Asphalt) the quieter road surface will be laid.
- The project will use 28,450m<sup>3</sup> of concrete, 212km road markings and 126km of fencing.

## Gully's a big challenge



Artist impression of the Mangaone Gully

Geotechnical investigations are under way in the Mangaone, Mangaonua and Mangaharakeke gullies to inform the detailed design of the bridges that will carry four lanes of Expressway traffic over these gullies.

Along with informing the bridge design the project team are also preparing a Gully Restoration Strategy for these areas. A drone is being used in areas not easily accessible by foot. The survey will inform a strategy, which will include the following:

- The identification of key restoration areas and the restoration objectives for each area.
- High level suggestions on how to undertake such restoration works including
- suitable plant species, planting and weed management strategies.
- Identification of potential funding sources.
- Identification of likely costs.

The Gully Restoration Strategy can then be used by groups like landowners, iwi or councils in any future restoration works in the gully systems, if they wish to do so.



### Any questions?



Follow us on facebook [www.facebook.com/waikatoexpressway](http://www.facebook.com/waikatoexpressway)



Phone us on  
0800 322 044



Visit our website  
[www.nzta.govt.nz/hamilton](http://www.nzta.govt.nz/hamilton)

#### Dana McDonald

Hamilton Section Relationship Manager  
NZ Transport Agency  
Telephone: 07 958 72 46  
Mobile: 0274 738 769