

Hamilton Section

Focus shifts to road building this summer

For the first two summer construction seasons, we've focused on building bridges and earth embankments for the new expressway.

Bridge building continues, but this summer the focus shifts from building embankments to building the road on top of the embankments.

The embankments are built from compacted layers of ash soil and sand. The road 'pavement' is two layers of compacted rock, sealed with bitumen and rock chip, then finished with a final layer of 'low noise' asphalt.

The pavement design is called Hi-Lab. While traditional pavement includes a range of different sized rock and sand, Hi-Lab uses lots of large rock, with enough final material to bind the rock in place. The medium sized material in traditional pavement has been removed from this design.

The first rock layer is called 'sub base' and consists of large 65mm rock, mixed and compacted with fine gravel, sand and cement. The second rock layer is called 'base course' and consists of smaller 40mm rock, mixed and compacted with the same fine gravel, sand and cement.

Hi-Lab harnesses the strength of large rocks compacted together to produce a stronger, longer lasting road surface.

However, this mixture of large and fine material requires special handling. It cannot be blended and transported to site or the fine material will settle out from the rock. The different sizes of material must be delivered separately and mixed on site. We then use special 'bottom dumper' trucks to deliver it on-site.

There are limits to the number of times it can be spread or compacted by a grader, roller or vibrating roller – again to prevent the fine material settling out.

The Hi-Lab is then sprayed with bitumen and sealed with fine stone chip. This seals the pavement layers from the weather before the final asphalt is laid.

Blending plant operating near Lake Road

A relocatable blending plant has been set up near Lake Road to begin producing blended Hi-Lab pavement.

The plant was imported from France, and can be relocated along the 22km-long project as pavement production moves north to south.



Hi-Lab pavement is tested at the Southern Interchange.



The blending plant in action at Lake Road.

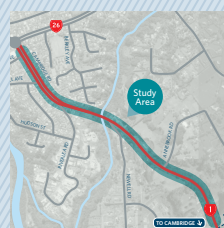
Over the next two years, the plant will produce 400,000 tonnes of blended rock, sand and cement to build the road pavement. The plant can feed material directly into the truck tray or stockpile it on site.

Once pavement construction is completed in the north, the plant will relocate further south to minimise the distance the material needs to be transported.



Project update:
What's happened since August?

Page 2 and 3



What's happening with Cambridge Road?

Page 4

Project Update: What's happened since August

1 Lake Road



The pavement blending plant has been assembled and commissioned. Road pavement is being laid and compacted. Construction of the Lake Road off-ramp continues.

2 Resolution Drive Extension



The embankments have been completed and road pavement will be laid this summer. Permanent drainage is being installed.


4 Gordonton Road



Embankments north and south of the bridge will be completed and road pavement laid this summer. Excavation under the Gordonton Road Bridge is complete.



3 Kay Road



Horsham Downs Road closed to through traffic on 9 October for up to 14 months. A bridge will be built to take Horsham Downs Road over the expressway. The road will reopen in late 2019. The Kay Road Bridge opened to traffic on 5 October after a blessing by Waikato-Tainui, ensuring there was an alternative route available for motorists to travel in and out of the city.

5 Puketaha Road / Greenhill Interchange



The bridge that will take the expressway over Puketaha Road is progressing well. Beams will be laid on the bridge in early December. Construction of the embankments on either side of the bridge will be completed and road pavement laid this summer.

At the Greenhill Interchange, bridge construction is almost complete. The embankments that will take the expressway over Pardoia Boulevard are under construction.

6 Ruakura Interchange



Bridge construction is nearing completion. Construction of the new connection to Ruakura Road is now largely complete. Design for the connecting road to the University of Waikato is almost complete.



7 Morrinsville Road / Ruakura Road



The SH26/Ruakura Road roundabout and reconstruction of Ruakura Road through to Vaile Road/Davison Road is almost complete. The roundabout eliminates a known crash hotspot. The new section of road features right turn bays, kerbing and a footpath.

8 Mangaonua Gully Bridge




Construction of this 150m long bridge near Morrinsville Road is now advanced. This is the longest bridge on the project.

9 Matangi Road



The dig-out under the bridge is now complete (photo shows early excavation). Excavation to the west continues.

10 Mangaone Gully / Mangaharakeke Gully



Two bridges are under construction in these gullies.

11 Southern Interchange



The East West Link Bridge is completed. SH1 traffic will be switched from Cambridge Road on to new lanes that run under this bridge. Cambridge Road north of Cherry Lane will be closed for excavation.

The new link road from the bridge to Birchwood Lane is under construction. Installation of culverts in the East West Gully has also begun.

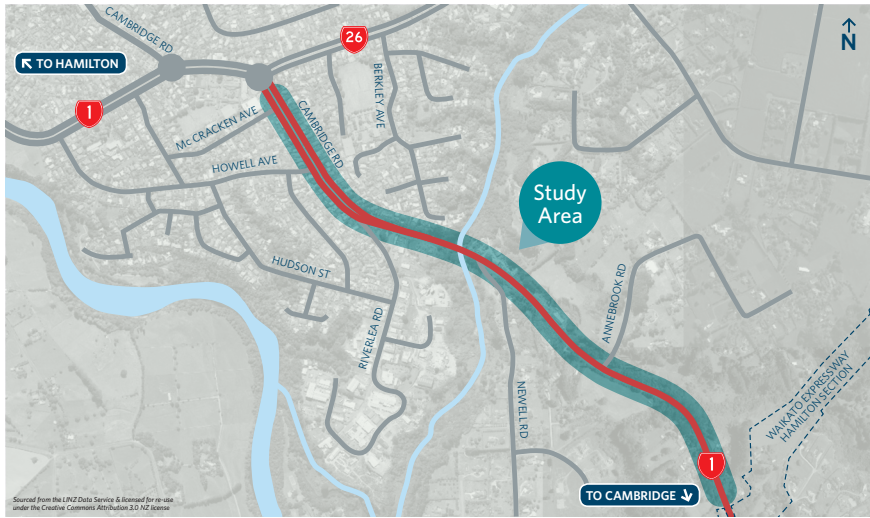
Construction of the Cambridge Road Bridge is progressing. This bridge will take traffic south from the city on to the expressway.

What's happening with Cambridge Road?

Cambridge Road (State Highway 1) is the main route into Hamilton from the south. However, the way traffic uses this road will change once the Hamilton Section of the Waikato Expressway opens in 2020.

And while there will initially be less traffic when the expressway opens, traffic is expected to increase again with population growth to the south of the city.

The NZ Transport Agency is studying the future function and layout of Cambridge Road between the Southern Interchange (part of the expressway currently under construction) and the existing roundabout at the intersection of SH1 / SH26 (Cambridge Road/Morrinsville Road).



The Agency has developed a long-list of options with community stakeholders including local Councils, transport groups and emergency services. This long-list will be reduced down to a short-list and eventually a recommended option.

In early 2019, an Information Day will be held where everyone is welcome to talk about the short-list of options. Further details will be publicised closer to the time.

A recommended option for this corridor is expected to be finalised by April 2019. This option will:

- increase the ability of Cambridge Road to move people and goods
- improve the route as a gateway to the city
- improve safety and the overall level of service.

Improvements to Cambridge Road, if required, would be made after the Expressway opens to traffic.



Visitor Centre opening hours

NORMAL OPENING HOURS

Monday to Friday from
9.00am to 3.00pm

NEXT SATURDAY OPENINGS

1 December 2018
(This is the final Saturday opening.
The Centre will not open on Saturdays in 2019
due to low visitor numbers.)

New names and changes ahead

This project is creating new roads and changing existing roads as we build the expressway.

Over the next few weeks, the three road controlling authorities in the Waikato are joining forces to consult with local communities about naming new roads or renaming existing roads.

These changes are required on the following roads (from north to south):

- Kay Road, from North City Road to Horsham Downs Road
- Old Borman Road, cut off by the expressway near Gordonton Road
- Greenhill Road
- Ruakura Road, which will be closed at the rail bridge, creating two 'no exit' roads
- the Ryburn Road extension connecting with the end of Percival Road.
- the new access road to five properties at 524 Cambridge Road
- the new east west link road between Cherry Lane and Birchwood Lane
- Cambridge Road between Cherry Lane and Bollard Road.

Three Information Evenings will be held where local residents can view maps, discuss options and make submissions. These evenings will be hosted by staff from Waikato District Council, Hamilton City Council and the NZ Transport Agency.

Info Evening times and venues:

- Thu 29 November at Tamahere Community Centre, 21 Devine Road, Tamahere 5pm-7pm
- Wed 5 December at Generations Church, North City Road, Rototuna 5pm-7pm
- Thu 6 December at Hamilton Section Visitor Centre, Ryburn Road, Ruakura 5pm-7pm.



Any questions?



Follow us on facebook www.facebook.com/waikatoexpressway



Phone us on
0800 322 044



Visit our website
www.nzta.govt.nz/hamilton

The Communications Team

Hamilton Section Project
NZ Transport Agency
Telephone: 0800 322 044