

Novell NetWare 6.5

www.novell.com

NETSTORAGE ADMINISTRATION GUIDE

N

Novell[®]

Legal Notices

Novell, Inc. makes no representations or warranties with respect to the contents or use of this documentation, and specifically disclaims any express or implied warranties of merchantability or fitness for any particular purpose. Further, Novell, Inc. reserves the right to revise this publication and to make changes to its content, at any time, without obligation to notify any person or entity of such revisions or changes.

Further, Novell, Inc. makes no representations or warranties with respect to any software, and specifically disclaims any express or implied warranties of merchantability or fitness for any particular purpose. Further, Novell, Inc. reserves the right to make changes to any and all parts of Novell software, at any time, without any obligation to notify any person or entity of such changes.

This product may require export authorization from the U.S. Department of Commerce prior to exporting from the U.S. or Canada.

Copyright © 2001-2003 Novell, Inc. All rights reserved. No part of this publication may be reproduced, photocopied, stored on a retrieval system, or transmitted without the express written consent of the publisher.

U.S. Patent No. 5,157,663; 5,349,642; 5,455,932; 5,553,139; 5,553,143; 5,572,528; 5,594,863; 5,608,903; 5,633,931; 5,652,854; 5,671,414; 5,677,851; 5,692,129; 5,701,459; 5,717,912; 5,758,069; 5,758,344; 5,781,724; 5,781,733; 5,784,560; 5,787,439; 5,818,936; 5,828,882; 5,832,274; 5,832,275; 5,832,483; 5,832,487; 5,859,978; 5,870,561; 5,870,739; 5,873,079; 5,878,415; 5,884,304; 5,893,118; 5,903,650; 5,903,720; 5,905,860; 5,910,803; 5,913,025; 5,913,209; 5,915,253; 5,925,108; 5,933,503; 5,933,826; 5,946,002; 5,946,467; 5,956,718; 5,956,745; 5,964,872; 5,974,474; 5,983,223; 5,983,234; 5,987,471; 5,991,810; 6,002,398; 6,014,667; 6,016,499; 6,023,586; 6,029,247; 6,052,724; 6,061,726; 6,061,740; 6,061,743; 6,065,017; 6,081,774; 6,081,814; 6,094,672; 6,098,090; 6,105,062; 6,105,069; 6,105,132; 6,115,039; 6,119,122; 6,144,959; 6,151,688; 6,157,925; 6,167,393; 6,173,289; 6,216,123; 6,219,652; 6,233,859; 6,247,149; 6,269,391; 6,286,010; 6,308,181; 6,314,520; 6,324,670; 6,338,112; 6,345,266; 6,353,898; 6,424,976; 6,466,944; 6,477,583; 6,477,648; 6,484,186; 6,496,865; 6,510,450; 6,516,325; 6,519,610; 6,532,451; 6,532,491; 6,539,381.
Patents Pending.

Novell, Inc.
1800 South Novell Place
Provo, UT 84606
U.S.A.

www.novell.com

NetStorage Administration Guide
[April 2003](#)

Online Documentation: To access the online documentation for this and other Novell products, and to get updates, see www.novell.com/documentation.

Novell Trademarks

eDirectory is a trademark of Novell, Inc.

NetWare is a registered trademark of Novell, Inc., in the United States and other countries.

Novell is a registered trademark of Novell, Inc., in the United States and other countries.

Novell Client is a trademark of Novell, Inc.

Novell exteNd Director is a trademark of Novell, Inc.

Novell iFolder is a trademark of Novell, Inc.

Third-Party Trademarks

All third-party trademarks are the property of their respective owners.

Contents

- NetStorage Administration Guide** **3**

- 1 NetStorage Overview** **5**
 - How NetStorage Works. 5
 - What Users See When They Access NetStorage 6
 - What's Next. 7

- 2 Installing NetStorage** **9**
 - Requirements. 9
 - Installing Novell NetStorage during the NetWare 6.5 Installation. 9
 - Installing Novell NetStorage after the NetWare 6.5 Installation 11
 - What's Next. 11

- 3 Administering NetStorage** **13**
 - Using iManager to Administer NetStorage 13
 - Understanding the NetStorage Configuration Settings 14
 - General 14
 - Authentication Domains. 15
 - WebDAV Provider. 16
 - iFolder Storage Provider 16
 - NetWare Storage Provider 17
 - Current Sessions 18
 - Resource Usage 18
 - Statistics 18
 - What's Next. 18

- 4 Troubleshooting NetStorage** **19**
 - Slow Login 19
 - Configuring LDAP Contextless Login for use with NetStorage 19
 - Novell iFolder and NetStorage 20
 - Other Useful TIDs 20

- 5 Accessing NetStorage** **21**

NetStorage Administration Guide

This guide includes information on Novell® NetStorage. NetStorage provides secure Internet-based access to files and folders on a NetWare® server in your network using either a browser or Microsoft* Web Folders.

The following topics are included in this documentation:

- ♦ [Chapter 1, “NetStorage Overview,” on page 5](#)
- ♦ [Chapter 2, “Installing NetStorage,” on page 9](#)
- ♦ [Chapter 3, “Administering NetStorage,” on page 13](#)
- ♦ [Chapter 5, “Accessing NetStorage,” on page 21](#)

Documentation Conventions

In this documentation, a greater-than symbol (>) is used to separate actions within a step and items within a cross-reference path.

A trademark symbol (®, ™, etc.) denotes a Novell trademark. An asterisk (*) denotes a third-party trademark.

1

NetStorage Overview

Novell® NetStorage provides secure Internet-based access to files and folders on a NetWare® server in your network using either a browser or Microsoft* Web Folders (Microsoft's implementation of WebDAV). NetStorage authentication relies on the power of eDirectory™ to provide secure access, so Internet-based access is as secure as accessing files from within the network.

Novell NetStorage includes the following benefits:

- ◆ Lets users securely copy, move, rename, delete, read, and write files between any Internet-enabled machine and a NetWare server on your network.
- ◆ Eliminates the need to use a virtual private network (VPN) client to access files.
- ◆ Eliminates the need to e-mail or copy data from one machine to another.
- ◆ Supports Internet standards such as HTTP, HTTPS, HTML, XML, and WebDAV.
- ◆ Supports the use of drive mappings that users are accustomed to when they log in using the Novell Client™ (see [“What Users See When They Access NetStorage” on page 6](#)).
- ◆ Supports access to users' Novell iFolder® accounts.
- ◆ Provides access to network files and folders via NetWare WebAccess, Novell iFolder, and Novell exteNd Director™ 4.1 Standard Edition.

With NetStorage installed on one NetWare 6.5 server, users can potentially have access to any NetWare 5 or later server anywhere on your geographically dispersed network.

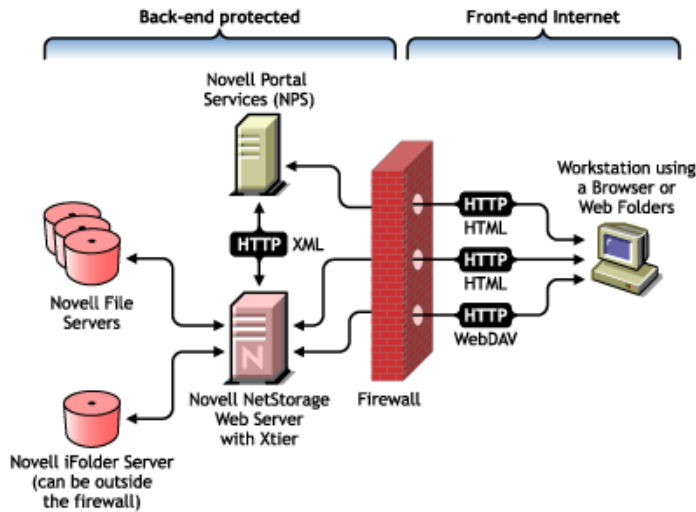
How NetStorage Works

NetStorage is installed on one NetWare 6.5 server that acts as a Middle Tier (also known as XTier) server. Middle Tier server configuration information is stored in the NetWare registry and Novell iManager provides an easy method for changing Middle Tier server registry entries. Xtier is Novell's Web services framework and is used by various Novell products.

NOTE: Previous versions of NetStorage were administered using the NSAdmin utility. Configuration should now be completed using Novell iManager.

After the Middle Tier server is set up, it appears as an Internet Web server to users and can be accessed either with a Web browser or with Microsoft's Web Folders. NetStorage also provides a gadget that provides access through Novell exteNd Director 4.1 Standard Edition.

[Description: NetStorage overview](#)



The Middle Tier server communicates with the Novell file servers in the network and provides secure authentication using eDirectory and the users' usernames and passwords. NetStorage also provides secure access to files that users have access located on Novell iFolder servers.

NOTE: Users must have their iFolder user accounts enabled through the iFolder server in order to access their files stored in iFolder using NetStorage. You must also enable the ability for users to set iFolder passphrases in NetStorage. For more information on iFolder, see the [Novell iFolder 2.1 online documentation \(http://www.novell.com/documentation/lg/ifolder21/index.html\)](http://www.novell.com/documentation/lg/ifolder21/index.html).

iFolder 2.1 does not support 56-bit encryption. If you are using 56-bit encryption, you must use iFolder 1.03.

All transactions can also be encrypted to increase the security using SSL. Novell iFolder transactions are secured using the iFolder encryption mechanism.

For more detailed information on creating and using login scripts, see the [online Novell Login Script Guide \(http://www.novell.com/documentation/lg/noclienu/index.html?page=/documentation/lg/noclienu/login/data/front.html\)](http://www.novell.com/documentation/lg/noclienu/index.html?page=/documentation/lg/noclienu/login/data/front.html).

What Users See When They Access NetStorage

The NetStorage Web page displays the network files and folders currently accessible for each user. NetStorage reads the user's login script to determine drive mappings, reads eDirectory User object properties to determine the path to the user's home directory, reads the user's Novell iFolder account, then displays a list of files and folders based on the mapped drives, home directories, and iFolder account.

NetStorage reads the container, profile, and user login scripts only from the primary eDirectory server specified during the installation and displays the user's drive mappings based only on those login scripts. However, because login scripts were designed to be processed by the Novell Client on the user's workstation, NetStorage processes only a subset of the login script functions.

HINT: If you specified alternate IP addresses or DNS names of servers in other eDirectory trees during the NetStorage installation, NetStorage reads the User object properties in the other eDirectory trees and displays those home directories also. This is useful if a user normally logs in to more than one eDirectory tree and you want that user to have access to additional home directories in different eDirectory trees using NetStorage. The User object name must be the same for each eDirectory tree.

NetStorage processes login scripts in order to find MAP statements. Each MAP statement defines a NetWare file system storage resource that the user will be able to access using NetStorage. IF, ELSE, END, INCLUDE, and EXIT commands are also recognized by NetStorage. All other login

script statements are treated as comments and ignored. Finally, login script variables are also recognized. Variables are preceded by a percent sign (%).

Users might have specific eDirectory rights to certain files and folders on your network but will not be able to access those files and folders using NetStorage unless login script drive mappings exist to those folders or the files and folders are in the user's home directory. If you want to provide users with NetStorage access to a specific folder, you might have to add a drive mapping command to that folder in a login script (container, profile, or user).

What's Next

For more information on installing Netstorage, see [Chapter 2, “Installing NetStorage,” on page 9](#).

Once you have installed NetStorage, you can administer settings. See [Chapter 3, “Administering NetStorage,” on page 13](#).

If you need to troubleshoot issues with NetStorage, see [Chapter 4, “Troubleshooting NetStorage,” on page 19](#).

If you need to provide users with information on how to use NetStorage, see [Chapter 5, “Accessing NetStorage,” on page 21](#).

2

Installing NetStorage

NetStorage can be installed as an optional component during the Custom NetWare® 6.5 installation or it can be installed after the installation. For most networks, you need NetStorage installed on only one server; however, this might vary depending size and your organization's needs. For example, if you are running in a clustered environment, you must install NetStorage on every node in the cluster with the exact same configuration. Or, if your company is geographically dispersed, you might want to install NetStorage on one server in each geographic region.

During the NetStorage installation, you are prompted for configuration information that is necessary for NetStorage to function properly. If you change the NetStorage configuration later, you must either reinstall or use Novell® iManager to change the configuration. For more information on iManager, see [Chapter 3, "Administering NetStorage," on page 13](#).

Requirements

In addition to meeting the requirements for NetWare 6.5, NetStorage requires the following:

- Server Requirements:** At least one NetWare 6.5 server in the eDirectory™ tree where NetStorage will be installed.

An eDirectory replica is not required to be on the same server where NetStorage is installed.

IMPORTANT: In order to avoid time issues, this server must have time set correctly according to your network specifications. If time is not set, workstations might not be able to access files.

- Workstation Requirements:** Netscape* Navigator* 4.7 or later, Internet Explorer 5.5 or later, or Microsoft Web Folders.

Installing Novell NetStorage during the NetWare 6.5 Installation

- 1** Start the NetWare 6.5 installation (either Express or Custom) and continue until you get to the screen requiring you to choose component options.

The NetWare 6.5 installation includes several steps not described here because they do not directly relate to this installation. For more detailed instructions on the installation, see "[Installing the Software](#)" in the *NetWare 6.5 Overview and Installation Guide*.

- 2** When the Choose a Solution screen appears, select Custom NetWare and then click Next.

You can also install other products during this installation.

Continue through the installation until you get to the screen that lists the components that can be installed.

- 3** In the Components screen, check NetStorage Component, Apache 2 Web server, and iManager check boxes, along with the other components you want installed with NetWare 6.5, and then click Next.

Continue with the installation process.

- 4 When you reach the NetStorage Install screen, specify the IP address or registered DNS name of a server in your eDirectory tree that has the master replica or a read/write replica of eDirectory.

The primary eDirectory server URL is required for NetStorage to function properly. This does not necessarily have to be the IP address or DNS name of the server where NetStorage is to be installed.

When a user attempts to log in, NetStorage searches the eDirectory database on the server you specify for the User object. If the User object is found, NetStorage attempts to authenticate the user to eDirectory.

If you know the eDirectory context for the users that will use NetStorage, you can add that context to the URL by inserting a colon (:) between the IP address or DNS name and the eDirectory context. The context is optional. If no context is specified, NetStorage searches the entire eDirectory tree on the primary eDirectory server for User objects.

For example, if the IP address of the server is 127.0.0.1 and the eDirectory context for your users is personnel, then you would add 127.0.0.1:personnel to the field.

- 5 (Optional) Specify IP addresses or DNS names of servers in other eDirectory trees that have at least read/write eDirectory replicas, or specify the same IP address or DNS name you used for the primary eDirectory server but with a different context.

You can add two alternate eDirectory server IP addresses or DNS names and context settings. These alternate settings are used to allow NetStorage to find User objects that exist in contexts other than what you specified for the primary eDirectory server. The alternate settings also allow NetStorage to find User objects with the same name in different eDirectory trees. Although the alternate URL and context settings are optional, they can help provide an additional level of access to NetStorage.

- 6 (Optional) Specify the IP address or DNS name and the port number that you assigned to Novell iFolder[®].

The iFolder DNS name or IP address and the port number are optional but, if specified, will allow NetStorage users to access and manipulate files and directories in their iFolder directory on the iFolder server.

Users must have their iFolder user accounts enabled through the iFolder server in order to access their files stored in iFolder using NetStorage. You must also enable the ability for users to set iFolder passphrases in NetStorage. For more information on iFolder, see the [Novell iFolder 2.1 online documentation \(http://www.novell.com/documentation/lg/ifolder21/index.html\)](http://www.novell.com/documentation/lg/ifolder21/index.html).

HINT: If you are installing NetStorage during the NetWare 6.5 installation, you can click the Back button to go back and view the screen where the IP address and port number assignments were made. This does not necessarily have to be the IP address or DNS name of the server where NetStorage is to be installed.

- 7 (Conditional) If you are running in a clustered environment, install NetStorage on every node in the cluster using the exact same configuration used on the first server.

The default configuration for Apache2 on NetWare 6.5 is to listen on all IP addresses. This is done with a Listen directive in `sys:\Apache2\conf\httpd.conf` that only specifies a port and doesn't have a specific IP address. If you have modified the default configuration to listen on a specific IP address, and you want the server to be a part of a cluster, you should either remove the specific IP address or add another Listen directive that does not specify an IP address so that Apache2 listens on all IP addresses.

After you install NetStorage, it will start automatically when you start your NetWare 6.5 server. If NetStorage is not accessible, restart the NetWare 6.5 server where NetStorage is installed.

Installing Novell NetStorage after the NetWare 6.5 Installation

If you did not install NetStorage during the NetWare 6.5 installation, you can install it later by completing the following steps:

- 1** Insert the *NetWare 6.5 Products* CD into your NetWare 6.5 server.
You might need to load `cdrom.nlm` on the server to access this CD.
- 2** From the Novell menu on the NetWare 6.5 console GUI, select Install.
- 3** Click Add, then browse to the root of the *NetWare 6.5 Products* CD.
- 4** Select the `product.ni` file, then click OK.
- 5** Check the NetStorage, Apache, and iManager check boxes and deselect all other components or products unless you specifically want to install them.
- 6** Go to [Step 4 on page 10](#) to complete the NetStorage installation.
- 7** Restart the NetWare 6.5 server.

After you install NetStorage, it will start automatically when you start your NetWare 6.5 server. If NetStorage does not start automatically, restart the NetWare 6.5 server where NetStorage is installed.

What's Next

After you have installed NetStorage, inform users that they can access their files from the Web. Instructions for accessing files using NetStorage are available in [Chapter 5, "Accessing NetStorage,"](#) on page 21.

If you need to change the NetStorage configuration, use iManager. See [Chapter 3, "Administering NetStorage,"](#) on page 13.

3

Administering NetStorage

You can change your NetStorage configuration after NetStorage has been installed on a NetWare® server (known as the Middle Tier or XTier server) using Novell® iManager. NetStorage configuration information is stored in the NetWare registry and iManager provides an easy method for changing NetStorage registry entries. iManager requires Internet Explorer 5 or later.

If you are running in a clustered environment, any registry changes made to one node in the cluster must be made to the registry of each node in the cluster. After you have made a change to one node, run iManager on each node in the cluster and make the same changes.

IMPORTANT: After changing any settings you must reboot your NetWare server or restart Apache Web server. To restart Apache Web server, at the server console, enter `Ap2WebDn` to stop the Web server and then enter `Ap2WebUp` to restart the Web server.

Using iManager to Administer NetStorage

- 1 Start Internet Explorer 5 or later and enter the URL for iManager.

The URL is `http://server_ip_address/nps/imanager.html`. Replace *server_ip_address* with the IP address or DNS name of the NetWare 6.5 server running NetStorage or the IP address for Apache-based services.

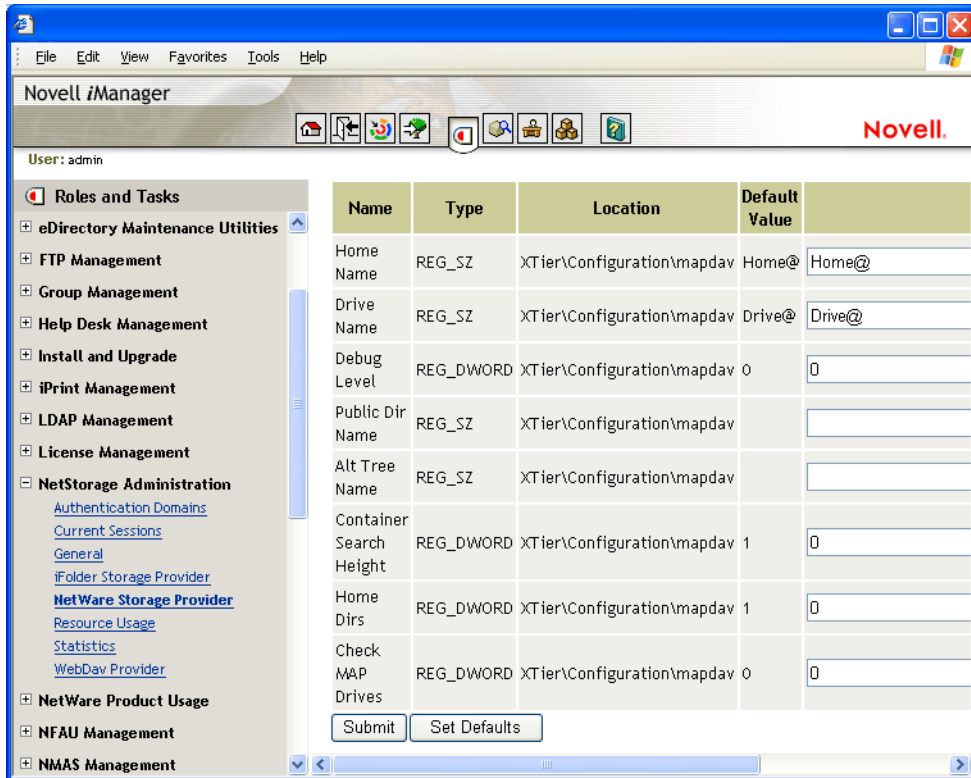
The date and time on the workstation being used to access NetStorage should be reasonably close (within a few hours) to the date and time on the server running NetStorage to avoid conflicts.

- 2 Enter your username and password.
- 3 In the left column, locate the NetStorage configuration options you want to change.

iManager displays a list of links in the left column that are used to access the various pages for editing and viewing NetStorage configuration information in the NetWare registry. For more information on each setting, click Help or see “[Understanding the NetStorage Configuration Settings](#)” on page 14.

- 4 Make the necessary configuration changes.

[Description: NetStorage page in iManager](#)



- (Conditional) If you are running in a clustered environment, run iManager on each node in the cluster and make the same changes.

Understanding the NetStorage Configuration Settings

This section includes information on all configuration settings that can be set. The settings are organized according to the link in the left column that they appear under. This information is also available if you click Help.

General

Settings	Description
Proxy Username and Proxy Password	<p>The admin username and password that you entered when you installed your NetWare server. If you want the Middle Tier Server to use a different username and password for administrator access, specify them in the fields provided.</p> <p>If you click the Set Defaults button, the value will be set to whatever value appears in the Default Value column. If there is no value in the Default Value column, the value will be set to blank (no value).</p>
Location	<p>The registered location you want users to enter as part of the NetStorage URL to access NetStorage. The default is oneNet.</p> <p>If you change this registry setting, you must also edit the netstorage\xsrv.conf file and change the /oneNet setting in the Location section (first section) to the same setting you specified in iManager.</p>

Settings	Description
Certificate Name	<p>The default certificate name created automatically during the NetStorage installation is NetIdentity. If you purchased a certificate that you want to use, or if you just want to use a different certificate, type the certificate name in this field.</p> <p>Any certificates used by NetStorage should reside in the same eDirectory™ context.</p>
Session Timeout	The amount of time (in seconds) that the session will remain idle before it is terminated. If there is no NetStorage activity for this amount of time, the user will be required to log in again to NetStorage before being allowed file access.
Debug Level	This setting should not be changed except under direction from Novell.
Janitorial Level	This setting should not be changed except under direction from Novell.
Persistent Cookies	<p>This setting can be turned either on or off. With the value set to 0, Persistent Cookies is turned off. Persistent Cookies is turned on (the default) if there is no value or if the value is set to anything other than 0.</p> <p>With Persistent Cookies turned off, the NetStorage session will end when the user closes the current browser or Web folder. Also, if the user has a current instance of NetStorage up in a browser window or Web folder and starts up a new browser instance or Web folder, the user will be required to reauthenticate.</p> <p>Turning off Persistent Cookies can be beneficial if you have workstations that are shared. As long as the browser instance is closed down, the next user of the workstation cannot accidentally or intentionally obtain access to your network through NetStorage.</p> <p>Leaving Persistent Cookies turned on can be beneficial if your workstations are not shared because it prevents users from having to unnecessarily re-authenticate.</p> <p>If the user selects the Logout option in NetStorage, the NetStorage session will end regardless of whether Persistent Cookies is turned on or off.</p>
LDAP Port	<p>Lets you change the LDAP port number if there is a conflict between Active Directory and eDirectory for LDAP requests.</p> <p>This conflict exists because the backend is acting as a domain controller, which has Active Directory installed on it. The conflict is created by both eDirectory and Active Directory attempting to use the same default port (number 389). Active Directory normally wins the conflict. The Proxy User object type exists in eDirectory but not in Active Directory. Because of this, when the Middle Tier server tries to bind as a Proxy User, the bind attempt fails. This is also the reason LDAP lookups fail.</p>

Authentication Domains

Lets you change or add the eDirectory server URLs and contexts that are required by NetStorage. This page also lets you change the eDirectory server that is designated as the Primary. See [“Installing Novell NetStorage during the NetWare 6.5 Installation” on page 9](#) for more information about eDirectory server URLs and contexts.

Settings	Description
Add Domain	Adds another eDirectory server IP addresses or DNS name.
Make Primary	Makes the eDirectory server URL listed above the button the Primary.

Settings	Description
Remove Domain	Removes the eDirectory server URL from the list of URLs used by NetStorage.
Remove Context	Removes the context (if there is one) from the eDirectory server URL.
Add Context	Adds a context to the eDirectory server URL.
Add Host	<p>Lets you list additional hosts for an Authentication Domain. Clicking the Add Hosts button lets you create a list of alternative hosts for the domain.</p> <p>If the Middle Tier server cannot reach the host specified in the domain, it will search the Other Hosts list specified in the Value field to find another server to use for authentication. Specify DNS names or IP addresses of alternate servers, separated by a comma delimiter, in the Value field.</p> <p>For example, you could enter a string similar to the following:</p> <pre>Middletier.boston.digitalair.com,Middletier1.boston.digitia lair.com</pre> <p>or</p> <pre>111.22.33.4,111.22.33.41</pre>

WebDAV Provider

Settings	Description
Monkier	The location of the NetStorage WebDAV provider (xdav.nlm). It is the location you want users to specify as part of the NetStorage URL to access NetStorage. The default is NetStorage.
Template Directory	The directory for the HTML interface. This setting should not be changed except under direction from Novell.
Debug Level	This setting should not be changed except under direction from Novell.

iFolder Storage Provider

If you have Novell iFolder[®] installed on your NetWare server, you can view or edit the following iFolder-specific configuration settings.

Settings	Description
Root	The name of the root directory for iFolder. The root iFolder directory is a virtual directory, and changing it will change the iFolder directory name users see when accessing their files and directories on the iFolder server. The default is iFolder.
Passphrase Form Protocol	Default is HTTPS. This field should not be changed unless you want users' passphrases to be sent in clear text.
iFolder Server	<p>The DNS name and port number for the iFolder server. This setting shouldn't need to be changed unless you are changing the iFolder server your users will access.</p> <p>If you click the Set Defaults button, the value will be set to whatever value appears in the Default Value column. If there is no value in the Default Value column, the value will be set to blank (no value).</p>

Settings	Description
Secure Port	The port number that HTTPS is running on. This setting normally does not need to be changed. The default is 443.
Debug Level	This setting should not be changed except under direction from Novell.

NetWare Storage Provider

Settings	Description
Home Name	<p>This text will be displayed on the NetStorage Web page and will be followed by the tree name and path to the user's home directory. The user might have home directories in multiple trees, in which case multiple paths will be displayed.</p> <p>The default is Home@. You might want to change this if you want to reference home directories with a different word or in a language other than English. See the "Alternate Tree Name" for more information on configuring NetStorage to display multiple home directories.</p>
Drive Name	<p>This text will be displayed on the NetStorage Web page and will include the drive letter being referenced followed by the path to the mapped drive. The user's login script on the Primary tree is parsed by NetStorage to gather information on mapped drives. You might want to change this if you want to use a different word or words to reference mapped drives on the NetStorage Web page.</p>
Debug Level	This setting should not be changed except under direction from Novell.
Public Directory Name	<p>This registry key provides a way for any NetStorage user to make documents or files available to other NetStorage users.</p> <p>A public directory can be automatically created in each user's home directory by NetStorage. If public directories are created by NetStorage, all users in the same eDirectory context will have Read and File Scan rights to the other users' public directories.</p> <p>If you don't want public directories created in users' home directories, leave this field blank (the default).</p> <p>If you want public directories created in users' home directories, enter the name for the public directories. For example, if you specify My Public Files as the name for the public directories, a folder named My Public Files will be created at the root of each user's home directory the first time the user logs in using NetStorage.</p> <p>To access a public directory, users need to add <code>~username</code> at the end of the URL used to access NetStorage. For example if you want to access the public directory for a user named jsmith, you might specify a URL similar to <code>http://file.i-login.net/oneNet/NetStorage/~jsmith</code>.</p>

Settings	Description
Alternate Tree Name	<p>When a user's home directory is displayed by NetStorage, the name of the eDirectory tree is also displayed. With this configuration field, you can substitute the tree name that users see in NetStorage to something that might be more intuitive. For example, if the tree name is SERVICES 2 and you want users to see i-Login, you would type SERVICES2/i-Login in this configuration field. The eDirectory tree name and the substitute name are separated with a slash (/).</p> <p>NetStorage can access user home directories in multiple eDirectory trees. If you want to substitute eDirectory tree names in more than one tree, separate those tree name substitutions with a comma. An example of this is SERVICES2/i-Login, SERVEME2/Staging.</p>
Container Search Height	<p>Specifies the number of container levels (from where the User object is located) that NetStorage will search up in the eDirectory tree for the container login script. The default is 1, which is the same level used by Novell Client™ software.</p> <p>If you specify a number greater than the number of container levels in the eDirectory tree, NetStorage will search up to and including the root container in the tree. If you specify 0, NetStorage will only search the container where the User object is located.</p>
Home Dirs	<p>Specifies if home directories are to be processed. The default is 1, meaning that they will be processed. If you specify 0, no home directories will be processed or displayed to the user.</p>
Check MAP Drives	<p>Specifies if mapped drives (from login script MAP statements) are checked when the user logs in. The default is 0, meaning that mapped drives are not checked and all mapped drives are displayed to the user. If the user attempts to access a mapped drive pointing to a directory that does not exist or that the user does not have access rights to, an error occurs.</p> <p>If you specify 1, each mapped drive is checked at login and map drives that do not exist or that the user does not have access to are not displayed.</p>

Current Sessions

Displays a report with information on the current NetStorage sessions.

Resource Usage

Displays a detailed report of resource utilization for NetStorage.

Statistics

Displays a report with information about server up time, login failures, number of NetStorage sessions, etc.

What's Next

After you have configured NetStorage, inform users that they can access their files from the Web. Instructions for accessing files using NetStorage are available in [Chapter 5, "Accessing NetStorage," on page 21](#).

4

Troubleshooting NetStorage

This section contains information on common troubleshooting issues. In addition to this information, additional information is located in Technical Information Documents (TIDs) available in the Knowledgebase on the [Novell Technical Support Web site \(http://support.novell.com\)](http://support.novell.com).

Slow Login

The most common cause of a slow login to NetStorage is large or poorly configured login scripts. When a user authenticates to the Primary Authentication domain, all applicable login scripts for that user object are processed. The more commands executed, the longer the login process.

Invalid authentication domains can also slow the login process. After the user has been authenticated to the Primary authentication domain, the same username and password will be used to authenticate to any Secondary authentication domains. Authentication failure on any of these domains will slow logins. Users can successfully authenticate to the Primary Authentication domain and fail at each of the secondary domains.

It is helpful to determine if slow logins are global (all users) or specific to a given user object. If all users are affected, it is more likely to be a problem with the XTier authentication domain configuration. If a single user or groups of users are affected, check all login scripts that apply to that user or group. A problem with a context's login script can affect a large number of users. Mapping out which scripts apply to which users can help narrow the problem.

For more information on how NetStorage works with Login Scripts, see "[Understanding How Login Scripts Work with NetStorage \(http://www.novell.com/documentation/lg/noclienu/index.html?page=/documentation/lg/noclienu/login/data/ajikj4.html\)](http://www.novell.com/documentation/lg/noclienu/index.html?page=/documentation/lg/noclienu/login/data/ajikj4.html)" in the *Novell Login Scripts Guide*.

Configuring LDAP Contextless Login for use with NetStorage

When configuring LDAP contextless login, consider the following issues.

Primary Authentication Domain: The user must be authenticated to the Primary Authentication domain (an eDirectory server with a replica). You may provide more than one context in the Primary Authentication domain resulting in each context being searched for the presence of the user. The search is performed using an LDAP search of the configured contexts.

Secondary Authentication Domain: After the user has been authenticated to the Primary authentication domain, the same username and password will be used to authenticate to any Secondary authentication domains. The search is performed using an LDAP search of the configured contexts for that domain. If authentication to any Secondary domains is unsuccessful, the user is still authenticated to the Primary authentication domain. Authentication failure on a

Secondary domain can cause a delay in the login process and is one of the most common causes of slow logins to NetStorage.

Enable Clear Text Passwords: Passwords are encrypted in NetWare 6.5 so Enable Clear Text Passwords should not be selected on the LDAP Group object. LDAP will need read and browse rights to the entire tree. By default, when a user performs an anonymous bind (doesn't specify a password), a special object in the directory calculates access control for that user. This object is termed [Public]. By default, this object can browse the entire tree hierarchy and read a limited number of attributes on entries. The attributes that [Public] can read are those that have the X-NDS_PUBLIC_READ option set to true. Because passwords are encrypted, the proxy username and passwords might not look correct.

If you'd like to have an anonymous bind use a different object in the tree, you can specify that object in the Proxy Username field. By doing this, you can restrict the types of objects and attributes that anonymous users can access by setting the appropriate access controls on the proxy user object. The proxy username must be a distinguished name. To easily select an object, click the directory browser button to the right of the text field on the LDAP Group Object. A dialog box appears that allows you to choose an object in the tree. Any NDS user object can be used and anonymous access will assume the NDS rights of that user.

IMPORTANT: A proxy user must have a blank password in order to work correctly. This is very different from having NO password. If any user has no password, then they do not have a public/private key pair to compare against when attempting login. A blank password will generate a public/private key pair, although the actual string for the password is empty. To set a blank password, go into ConsoleOne and click on the Restrictions tabpage. Then click on Change Password. Without typing anything, click Set Password. This will set the password to an empty string. (still true?)

Novell iFolder and NetStorage

When troubleshooting a NetStorage and Novell iFolder[®] issue, it is important to first determine if it is a NetStorage problem or an iFolder problem. It is easy to spend a great deal of time working the problem from the NetStorage end only to find that the user cannot access iFolder directly. A few simple tips can help speed the identification of the problem.

1. Take NetStorage out of the equation. Make sure the User can successfully log into iFolder with the iFolder client or applet. If login is unsuccessful, the problem is with iFolder and should be addressed there. If the user successfully logs in to iFolder, begin troubleshooting the NetStorage application.
2. Enable debugging for the iFolder Storage Provider. In iManager, click iFolder Storage Provider and change the Debug Level from 0 (default) to FFFFFFFF, then restart the server. Log in to NetStorage and attempt to access iFolder. The server logger screen will now display all warnings and errors related to the iFolder Provider.
3. Create a new user for testing. Some problems are user-specific and some problems affect all users. Creating a test user can help to determine this. When creating a test user for troubleshooting, login scripts and home directories are not needed.

Other Useful TIDs

Tid # 10076634 NetStorage Error: Passphrase could not be set

Tid # 10066482 Configuring Novell NetWare 6 NetStorage for a clustered volume

Tid # 10071930 Can't single-sign on to NetStorage through iChain

5

Accessing NetStorage

To access NetStorage from a workstation, do the following:

- 1 Start your browser or Microsoft Web Folders and specify the URL for NetStorage.

The URL is `http://server_ip_address/oneNet/NetStorage/`. Replace *server_ip_address* with the IP address or DNS name of the server running NetStorage or the IP address for Apache-based services. If Apache-based services use a port other than 80, you must also specify that port number with the URL.

For example, if the IP address for NetStorage is 127.1.1.1 and the port number is 51080, then you would specify `127.1.1.1:51080/oneNet/NetStorage/`.

The date and time on the workstation being used to access NetStorage should be reasonably close (within a few hours) to the date and time on the server running NetStorage to avoid conflicts.

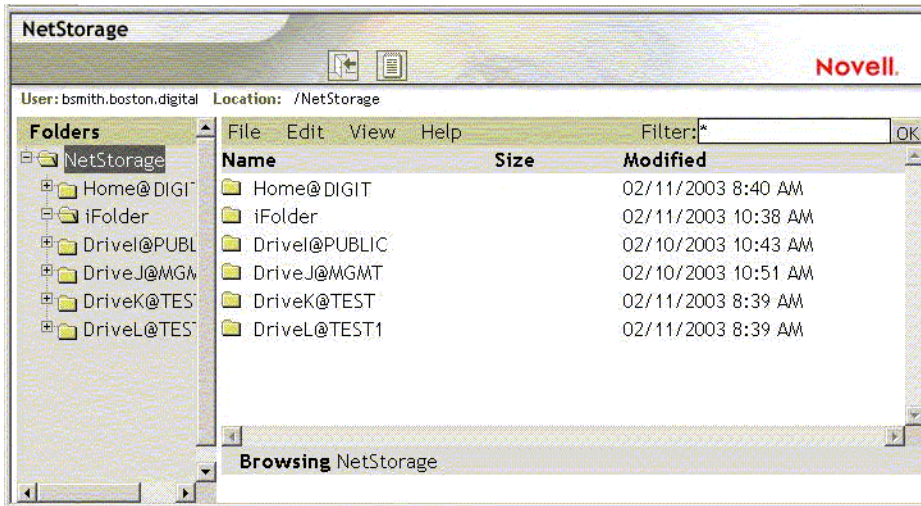
- 2 Enter your username and password.

NetStorage uses your eDirectory™ username and password, so you don't need to remember or use a separate username or password.

Based on how NetStorage has been configured, the NetStorage Web page displays the network files and folders you have access to. NetStorage reads your NetWare® login script to determine drive mappings, reads eDirectory User object properties to determine your home directory, then displays a list of files and folders based on mapped drives and home directories. If you usually log in to more than one eDirectory tree, you might have access to additional home directories in different eDirectory trees. If you have a Novell® iFolder® account, this account is also displayed. However, some NetStorage features such as Download for Editing are not available with Novell iFolder.

You can use many of the same conventions for expanding and contracting folders and opening files that are available in Windows Explorer. To create new folders or copy, delete, rename, move, or download existing files using a browser, click the File menu.

[Description: NetStorage folder view](#)



Clicking the Folder View button in the browser window displays folders in another column and lets you expand and contract folders. The Text View only displays the files and folders in the current directory and does not let you expand or contract folders.

Local files and folders are not accessible using NetStorage. Also, you cannot map drives or change login scripts from NetStorage.