

56K PCI Modem

Easy Start (Read Me First)

Version 1.3

Contents...

About this Easy Start	3
Safety Guidelines	3
Package	3
Minimum System Requirements	4
Step 1: Installing the Modem Card	5
Step 2: Connecting the Modem Card	5
Step 3: Installing Your 56K PCI Modem Driver	6
3.1 For Windows® 98	6
3.2 For Windows® Me	8
3.3 For Windows® 2000	10
3.4 For Windows® XP	12
3.5 For Windows NT® 4.0	14

WARNING

Before installing the Modem card ensure the PC is switched OFF and the mains cord removed. If servicing the Modem card ensure the PC is switched OFF, the mains cord unplugged and the Telecommunications Line cord is disconnected from the Modem Card.

EUROPEAN NETWORK COMPATIBILITY DECLARATION

This product is designed to interwork with the Public Switched Telecommunication Networks in UK, Ireland, Netherlands, Sweden, Denmark, Finland, Switzerland, Luxembourg, Belgium, France, Germany, Spain, Portugal, Iceland, Greece, Italy, Norway and Austria.

The equipment may have interworking difficulties in PSTN networks in other countries. Please contact your equipment supplier if it is desired to use the equipment on another network.

Electrical Safety

Before installing this equipment you must ensure that the power drawn by this card, together with the host and any auxiliary cards drawing power from the host, is within the rating of the host power supply.

The equipment must be installed such that with the exception of the connections to the host, clearance and creepage distances shown in the table below are maintained between the card and any other assemblies that use or generate a voltage shown in the table.

The larger distance shown in brackets applies where the local environment within the host is subject to conductive pollution or dry non-conductive pollution which could become conductive due to condensation. Failure to maintain these minimum distances would invalidate the approval.

The analogue telecommunications interface is intended to be connected to telecommunication network voltage (TNV) circuits which may carry dangerous voltages. The telephone cord must remain disconnected from the telecommunications system until the card has been installed within a host which provides the necessary protection of the operator.

Clearance	Creepage (mm)	Voltage used or Generated by Host or Other Cards
2.0	2.4 (3.8)	Up to 50 Vrms or Vdc
2.6	3.0 (4.8)	Up to 125 Vrms or Vdc
4.0	5.0 (8.0)	Up to 250 Vrms or Vdc
4.0	6.4 (10.0)	Up to 300 Vrms or Vdc

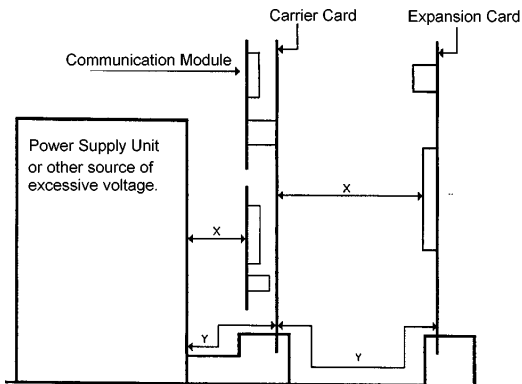
If it is subsequently desired to open the host equipment for any reason, the telephone cord must be disconnected prior to effecting access to any internal parts which may carry telecommunication network voltages.

Safety level of the various connectors:

- Telephone Line Connector = TNV3
- PCI connector = SELV

These indications are classified as per safety standards EN60950/A4:

- TNV3: Telecommunications Network Voltage
- SELV: Safety Extra Low Voltage



Except for the edge connector which plugs into the host's expansion slot, clearance distance (Xmm) and creepage distance (Ymm) as given in the above table, must be maintained between the communication card and any other assemblies which use or generate a hazardous voltage.

Product warranty does not apply to damage caused by lightning, power surges or wrong voltage.

Safety Guidelines

- Static electricity can cause permanent damage to your modem card. To prevent such a damage, you must ground yourself while installing the modem card by touching any non-painted surface of the computer's chassis before you begin installation, and again every minute or so until the installation is completed.
- During times of lightning strike/thunderstorm, do not use the modem.
- This product is for use only in UL Listed computers.
- To reduce the risk of fire, use only No. 26 AWG or larger telecommunication line cord.

About this Easy Start

This booklet contains information on setting up your 56K PCI Modem. It touches on the key installation procedures to help you setup your modem !



For commonly asked questions or problems encountered during the setting up / running of your modem, please refer to the [FAQ & Troubleshooting](#) documentation located in the [Manuals](#) folder on your Installation CD.

Package

If you found any missing items, please contact your dealer immediately.

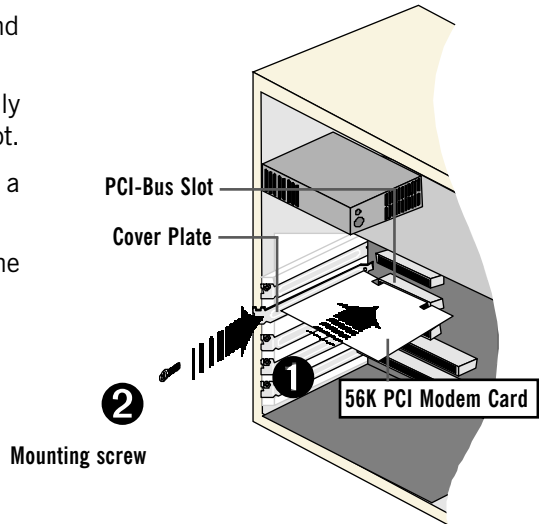
- 1 56K PCI Modem Card
- 1 Installation CD
- 1 Easy Start
- 1 Telephone extension cable (optional)

Minimum System Requirements

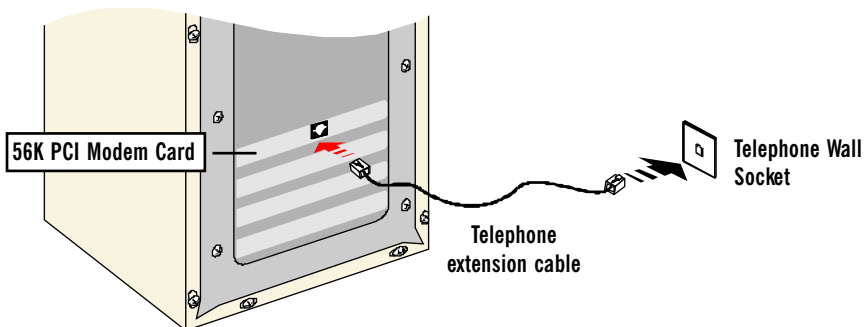
- IBM PC-based computer with Pentium® 166 processor
- A free PCI-Bus Slot
- 16MB RAM (32MB is recommended) - For Windows® 98
32MB RAM (48MB is recommended) - For Windows® Me
32MB RAM - For Windows NT® 4.0
64MB RAM (128MB is recommended for Windows® XP) - For Windows® 2000 / Windows® XP
- 10MB hard disk space (system files and modem driver only)
- A CD-ROM drive
- Windows® 98 Second Edition / Windows® Me / Windows® XP / Windows NT® 4.0 / Windows® 2000

Step 1: Installing the Modem Card

- i Remove the cover of your computer. (Please refer to the documentation that comes with your computer for proper removal of the cover)
- ii Select a free PCI-Bus slot and remove its cover plate.
- iii Insert the modem card firmly into the PCI bus expansion slot.
- iv Secure the modem card with a mounting screw.
- v Replace back the cover of the computer.



Step 2: Connecting the Modem Card



Connect one end of the **Telephone extension cable** to the modem card and the other end to the **Telephone Wall Socket**.

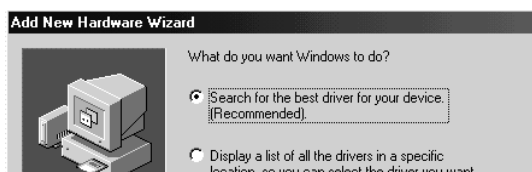
Step 3: Installing Your 56K PCI Modem Driver

3.1 Installing Your 56K PCI Modem Driver For Windows® 98

1. Power on your computer to start Windows.
2. Windows will detect your newly-installed modem card. Click **Next** to continue.



3. Place the Installation CD into your CD-ROM drive.
4. Select the option **Search for the best driver for your device. (Recommended)** and click **Next** to continue.



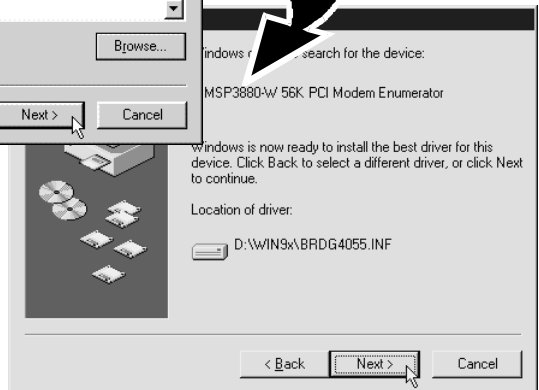
5. Select **Specify a location**.

Click **Browse...** and navigate to the **Win9x** folder on your Installation CD.
Click **Next** to continue.



(The screen shots use CD-ROM Drive letter **D** as an example. Your CD-ROM Drive letter may be different).

6. Click **Next** to proceed installation with the indicated driver.



7. Click **Finish** to complete the installation.



8. Restart your system when prompted.

3.2 Installing Your 56K PCI Modem Driver For Windows® Me

1. Power on your computer to start Windows.
2. Windows will detect your newly-installed modem card.

Select **Specify the location of the driver (Advanced)** option and click **Next**.



3. Place the Installation CD into your CD-ROM drive.

Select **Specify a location** option.

Click **Browse** and navigate to **Winme** folder on the Installation CD.

Click **Next**.



(The screen shots use CD-ROM Drive letter **D** as an example. Your CD-ROM Drive letter may be different).

- Click **Next** to proceed installation with the indicated driver.



- Click **Finish** to complete the installation.



3.3 Installing Your 56K PCI Modem Driver • For Windows® 2000

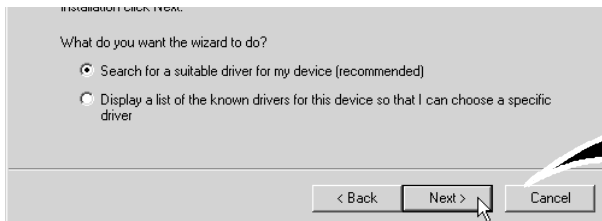
1. Power on your computer to start Windows.
2. Windows will detect your newly-installed modem card.

Click **Next**.



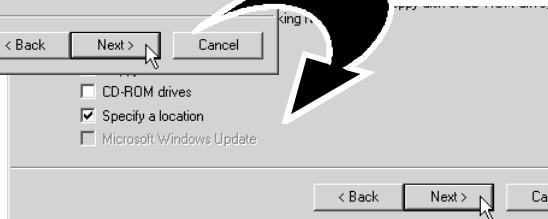
3. Windows will prompt for your modem driver.

Click the option **Search for a suitable driver for my device (recommended)** and click **Next**.



4. Place the installation CD into your CD-ROM drive.

Select **Specify a location** and click **Next**.



5. Click **Browse** and navigate to **Win2000** folder on your Installation CD-ROM.

Click **OK**.

(The screen shots use CD-ROM Drive letter **D** as an example. Your CD-ROM Drive letter may be different).



6. Click **Next** to proceed installation with the indicated driver.



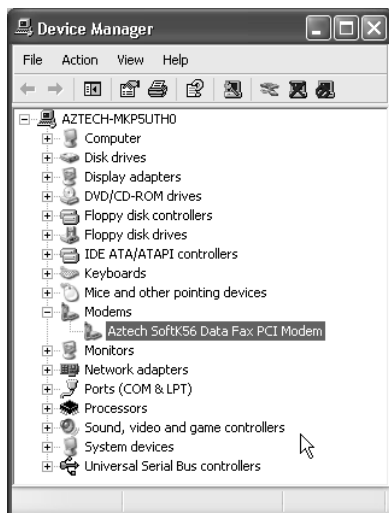
7. Click **Yes** to continue if a **Digital Signature Not Found** window appears (This occurs when Windows detects a newer version of the driver).
8. Click **Finish** to complete the installation.



3.4 Installing Your 56K PCI Modem Driver - For Windows® XP

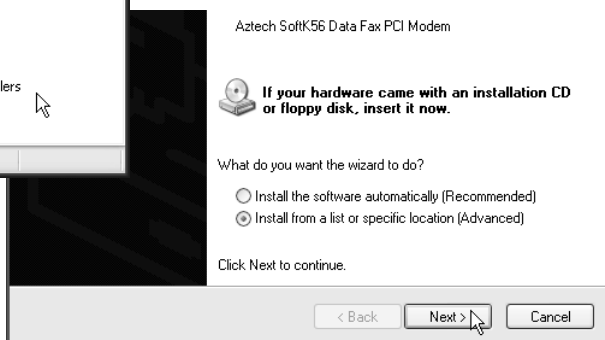
(Instructions are based on **default Start Menu** option)

1. Power on your computer to start Windows. It will detect your newly-installed modem card and install a generic driver for your modem.
Carry out the following procedures to update the driver for your modem.
2. From your Windows taskbar, click **Start**. Move your mouse cursor to **My Computer** option, right-click on it and select **Properties**.
3. Click the **Hardware** tab and click **Device Manager**.
4. You will see **Aztech SoftK56 Data Fax PCI Modem** listed. Right-click on the Modem and select **Properties**.



5. Select the **Driver** tab and click **Update Driver**.
6. The **Hardware Update Wizard** will appear. Place the Installation CD into your CD-ROM drive.

Select **Install from a list or specific location (Advanced)** option and click **Next**.

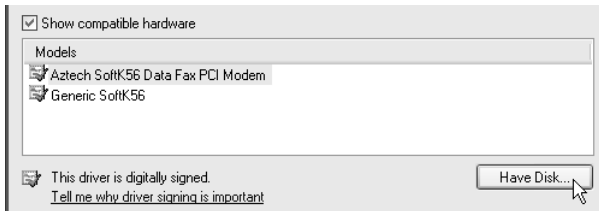


7. Click **Don't search. I will choose the driver to install** option and click **Next**.

☒ Don't search. I will choose the driver to install.

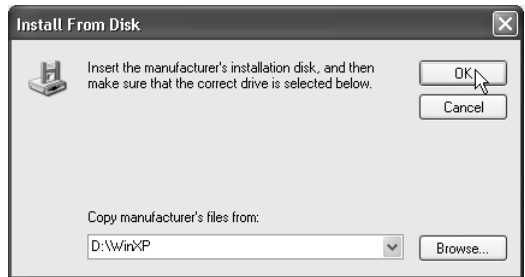
Choose this option to select the device driver from a list. Windows does not guarantee that the driver you choose will be the best match for your hardware.

8. Click the **Have Disk...** button.



9. Click **Browse** and navigate to the '**WinXP**' folder on your Installation CD and click **OK**.

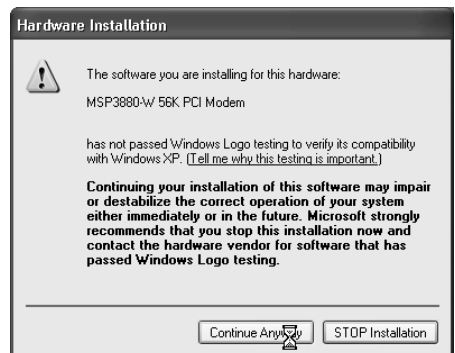
(The screen shots use CD-ROM Drive letter **D** as an example. Your CD-ROM Drive letter may be different).



10. Click on **MSP3880-W 56K PCI Modem** and click **Next**.



11. At the Hardware Installation prompt, click **Continue Anyway**. (This is prompted when Windows detected a newer version of the driver).



12. Click **Finish** to complete the installation.

Close the Modem Properties dialog box.



3.5 Installing Your 56K PCI Modem Driver - For Windows NT® 4.0

1. Power on your computer to start Windows.
2. Place the **Installation CD** into your CD-ROM drive.
3. From the Windows taskbar, click **Start** and select **Run...** .
Type "**D:\winnt40\setup.exe**" (assuming you have placed the CD in a CD-ROM drive labelled as D) and click **OK**.
4. Click **Next** and select the **Product Name** from the **Modem Board Installation Wizard**.
5. Follow any on-screen instructions to complete the installation of the driver.
6. **Restart** your system if prompted.



On commonly asked questions or for problems encountered during the setting up / running of your modem, please refer to the [Frequently Asked Questions & Troubleshooting Guide](#) located in the [Manuals](#) folder on your Installation CD.

- All other company or product names are trademarks or registered trademarks or service marks of their respective owners.