

ADSL USB & Ethernet Router

User Manual

Version 1.2

Contents

Introduction	3
Minimum System Requirements	3
Package	4
Router Overview	4
Step 1: Setting Up Your Router	6
Step 2: Installing Your USB Device / Configuring Your Ethernet Network Card	8
Step 3: Configuring Your Router	16
Step 4: Configuring Your Internet Browser	18

Safety Guidelines

1. *Product warranty does not apply to damage caused by lightning, power surges or wrong voltage usage.*
2. *This product is for use only in UL Listed computers.*

Adhere to the following safety guidelines when using your unit to reduce the risk of fire, electric shock and injury.

- ⓘ Understand all instructions in the manual. Follow all instruction labels found on the unit.
- ⓘ Except for the power adapter supplied, the unit should not be connected to other adapters/power supplies.
- ⓘ Never spill liquid of any kind on the unit.
- ⓘ Do not place the unit on an unstable stand or table. The unit may drop and become damaged.
- ⓘ Do not expose the unit to direct sunlight.
- ⓘ Do not put any hot devices close to the unit as it may degrade or cause damage to it.
- ⓘ Do not put any heavy object on top of the unit
- ⓘ Do not use liquid cleaners or aerosol cleaners. Use a soft, dry cloth for cleaning.

Introduction

Thank you on your purchase of the ADSL USB & Ethernet Router !

The ADSL USB & Ethernet Router can be connected to any computer with USB Port, to a 10 Base-T Ethernet card or to an Ethernet Hub / Switch. It makes use of your existing phone line for Internet surfing and at the same time allows you to use your phone.



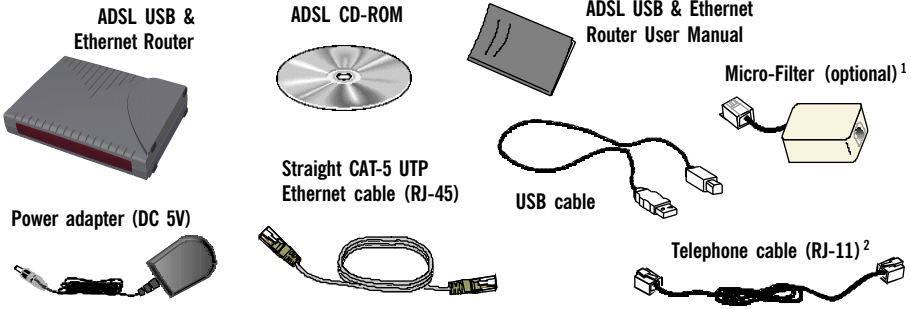
For commonly asked questions or problems encountered during the setting up / running of your Router, please refer to the [Frequently Asked Questions & Troubleshooting Guide](#) on your Installation CD (Manuals folder).

Minimum System Requirements

- Pentium® MMX 233MHz (or above)
- CD-ROM Drive
- Ethernet card installed with TCP/IP Protocol (required only if you are connecting to the ETHERNET port of your Router)
- USB Port (required only if you are connecting to the USB Port of your Router)
- Operating Systems supported: Windows® 98 Second Edition / Windows® 2000 / Windows® Me / Windows® XP

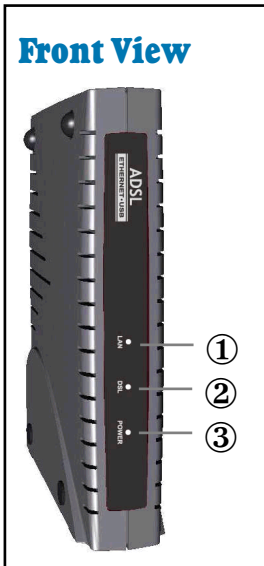
Package

For any missing items, please contact your dealer immediately.



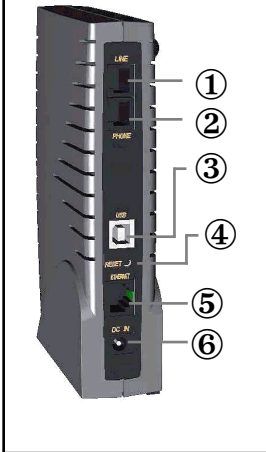
- 1 The Micro-Filter can be purchased separately from your dealer. For details on the usage of Micro-Filter, you may refer to **Frequently Asked Questions & Troubleshooting Guide**, 'Do I need to use Micro-Filter when using ADSL' on the CD-ROM (Manuals folder).
- 2 The telephone extension cable used for this Router is a UL Listed Communication Circuit Accessory, minimum 26AWG.

Router Overview



- ① **LAN**
Lights up when the Ethernet cable is properly connected from your Router to the Ethernet Card.
Flickers when the Ethernet is transmitting/receiving data. (There will not be any activities for this LED if you are using USB cable to connect to your Router.)
- ② **DSL**
Lights up when the ADSL connection is established.
Flickers at fast interval when the ADSL is transmitting/receiving data.
Flickers at a slower interval when trying to establish a connection.
- ③ **POWER**
Lights up when Power switch (at the rear) is pressed ON.

Rear View



① LINE

Telephone jack (RJ-11) to connect to your Telephone Wall Socket (ADSL line).

② PHONE

Telephone jack (RJ-11) to connect to your Telephone handset.

③ USB

USB port to connect to the USB port on your computer.

④ RESET

To reset your Router to factory default settings. (All customised settings that you have saved will be lost!) Please refer to the below footer³ on how to activate the reset function.

⑤ ETHERNET

10 Base-T Ethernet jack (RJ-45) to connect to your Ethernet card or Ethernet Hub/Switch.

⑥ DC IN

To connect to the Power Adapter that comes with your package.

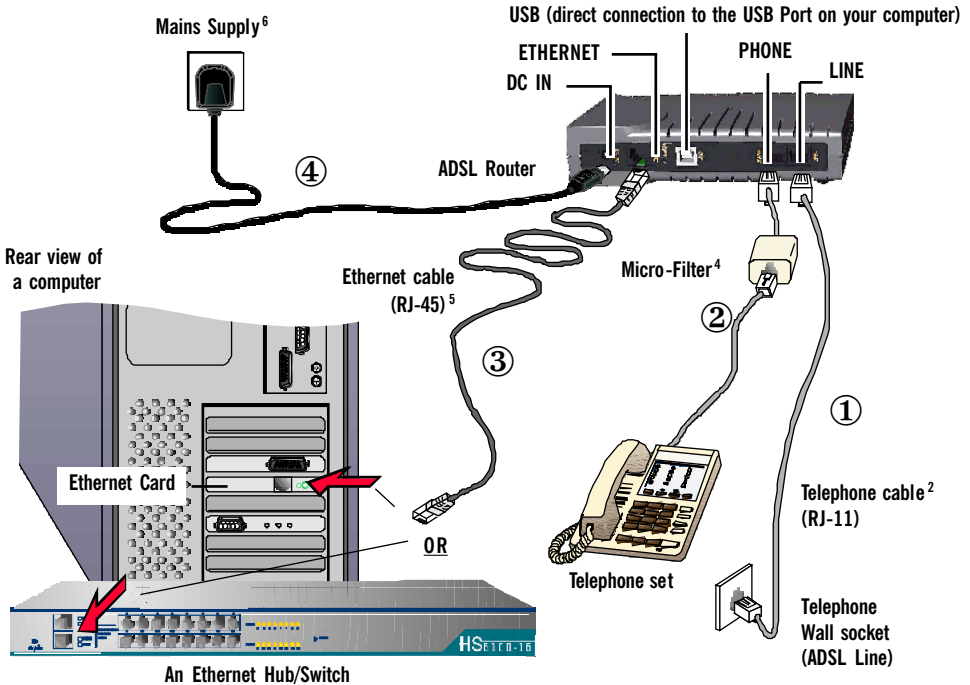
3 To activate the reset function:

- Ensure that your Router is powered on.
- Unplugged the Ethernet cable from your Router.
- Use a sharp pointer to depress the reset button. At this point, you will see the **LAN indicator** start blinking.
- When the **LAN indicator** stops blinking (that is after a count of approximately 6 seconds), release the pointer.
- Plug the Ethernet cable back to the **ETHERNET** jack of your Router.
- Place the **Installation CD** into your CD-ROM drive. On the **MAIN MENU**, select **RUN WEB COMMANDER**.
- From the navigation panel, click **Save config**.
- At the window displayed, click **Confirm**. The factory default settings are now restored.

Step 1: Setting Up Your Router



Power off your computer or/and any connected devices before connecting your Router !



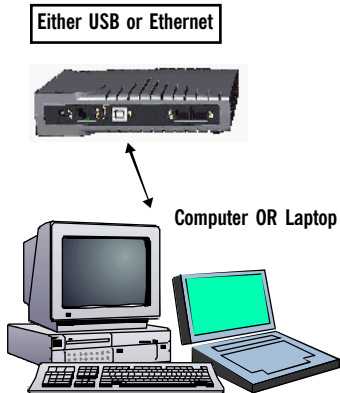
2 The telephone extension cable used for this product is a UL Listed Communication Circuit Accessory, minimum 23AWG

4 The Micro-Filter can be purchased separately from your dealer. It is not required if you are not connecting to a Telephone set. For details on the Micro-Filter usage, you may refer to **Frequently Asked Questions & Troubleshooting Guide**, 'Do I need to use Micro-Filter when using ADSL ?' on the CD-ROM (Manuals folder).

5 To connect **direct** to an **Ethernet card**, please use a **Straight** CAT-5 UTP Ethernet cable. To connect to the **MDI port** of your Ethernet Hub/Switch, please use **Straight** CAT-5 UTP Ethernet cable. If not, you may connect to the **MDIX port** of your Ethernet Hub/Switch using a **Cross** CAT-5 UTP Ethernet cable.

6 Power off The Mains when the unit is not in use.

- ① Connect the **Telephone cable**² from your Router to the **Telephone Wall Socket**.
- ② You may connect your **Telephone set** to the **PHONE** jack via a **Micro-Filter**⁴. *The connection is optional.*
- ③ **For Single User Connection (Bridge Mode)**



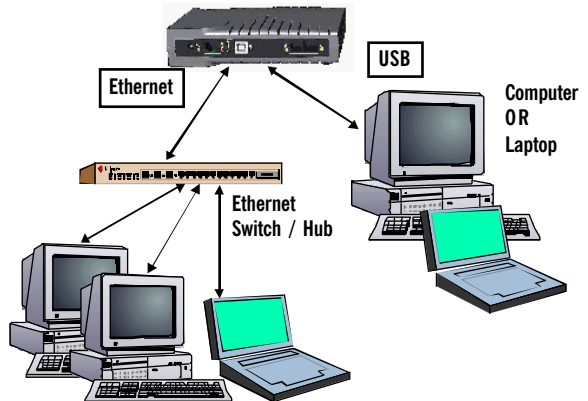
Connect the **Ethernet cable**⁵ (that comes with the package) from your Router to your **Ethernet card** on the computer, **OR**

Connect a **USB cable** from your Router to the **USB Port** on your computer (refer to the documentation that comes with your computer for the location of the **USB Port**).

For Multiple Users Connection (Router Mode)

In Router mode, both Ethernet jack and USB jack can be utilised simultaneously.

Connect your Router to multiple computers as shown in the diagram.



The Ethernet Hub / Switch is required if you are connecting more than 1 computer or Laptop to the Ethernet jack on the Router. The number of computers supported is dependent on the number of ports available on the Ethernet Hub / Switch.

- ④ Connect the **Power Adapter** from your Router to the **Mains Supply**⁶.

Step 2: Installing Your USB Device / Configuring Your Ethernet Network Card



If you have connected your Router to the USB Port of your Computer/Notebook, please proceed with [Step 2.1](#), page 8.

If you have connected your Router to the Ethernet jack of your Computer/Notebook, please proceed with [Step 2.2](#), page 14.

2.1 Installing the USB Driver Device



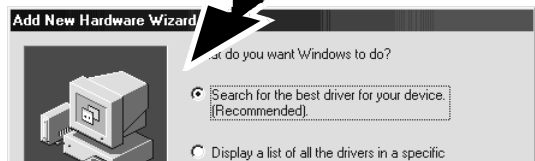
1. **DO NOT** proceed with this section if you are using Ethernet Network cable to connect to your Router!
2. The following screen shots illustrated serve only as examples. For any dissimilarities, please follow closely the instructions prompted on your Computer/Notebook.
3. For Windows® 98 Second Edition users, you may be prompted for your Windows CD-ROM. Have it ready by your side.

2.1.1 Installing the USB Driver Device - For Windows® 98 Second Edition

- i) Power on your computer to start Windows. At the following prompt, place the **ADSL CD-ROM** into your CD-ROM Drive and click **Next**.

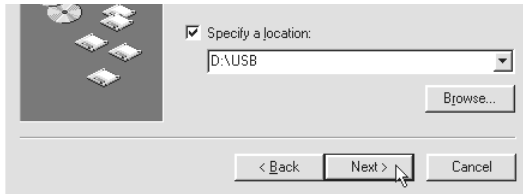


- ii) Select **Search for the best driver for your device (Recommended)**, and click **Next**.



- iii) Click **Specify a location**. Click **Browse** and navigate to the '**USB**' folder on your **ADSL CD-ROM**.

Click **Next**.



- iv) Click **Next** to proceed installation with the indicated driver.
- v) Click **Finish** to complete the first stage of the USB driver installation.
- vi) At the following prompt, click **Next** to proceed with the second stage.



- vii) Repeat **step ii to v**. Follow closely the instructions prompted on your computer.

For Windows® 98 Second Edition users, during installation, you may be prompted for your Windows CD-ROM. At the prompt, replace the **ADSL CD-ROM** in your CD-ROM Drive with your **Windows CD-ROM** and click **OK**.

At the **Copying Files** dialog box, enter the path of your Windows CD-ROM and click **OK**.

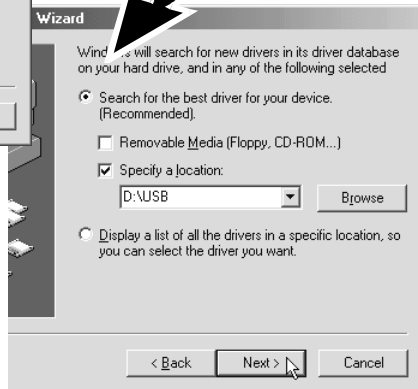
- viii) Restart your system when prompted. Proceed with **Step 4**.

2.1.2 Installing the USB Driver Device - For Windows® Me

- i Power on your computer to start Windows. Place the **ADSL CD-ROM** into your CD-ROM Drive.
- ii At the following prompt, select the option **Specify the location of the driver (Advanced)** and click **Next**.



- iii Click **Specify a location**.
Click **Browse** and navigate to the 'USB' folder on your ADSL CD-ROM.
Click **Next**.



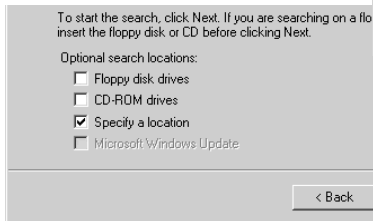
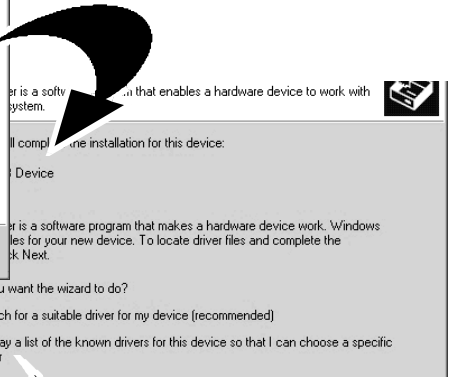
- iv Click **Next** again to proceed installation with the indicated driver.
- v Click **Finish** to complete the first stage of the USB driver installation.
- vi Repeat **step ii to v** to complete the second stage of installation. Follow closely to the instructions prompted.
- vii Restart your system when prompted. Proceed with **Step 3**.

2.1.3 Installing the USB Driver Device - For Windows® 2000

- i Power on your computer to start Windows. Place the **ADSL CD-ROM** into your CD-ROM Drive.
- ii At the following prompt, click **Next**.



- iii Select the option **Search for a suitable driver for my device (recommended)** and click **Next**.



- iv Click **Specify a location** and click **Next**.

- v Click **Browse** and navigate to the '**USB**' folder on your ADSL CD-ROM. Click **OK**.



- vi At the next prompt, click **Next** to proceed installation with the indicated driver.
- vii Click **Finish** to complete the first stage of the USB driver installation.

- viii At the following prompt, click **Next** to proceed with the second stage.



- ix Repeat **step iii to vi**, following closely to the instructions prompted.
- x You may be prompted with **Digital Signature Not Found** dialog box. (This happens when Windows detects your driver as a new version). Click **Yes** to proceed with the installation.



- xi Click **Finish** when prompted. Restart your system at the prompt. Upon completion, proceed with **Step 3**.

2.1.4 Installing the USB Driver Device - For Windows® XP

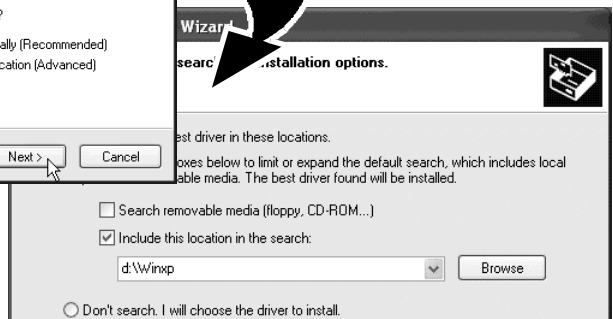
- i Power on your computer to start Windows. Place the **ADSL CD-ROM** into your CD-ROM Drive.
- ii At the following prompt, select the option **Install from a list or specific location (Advanced)** and click **Next**.



- iii Click **Include this location in the search**.

Click **Browse** and navigate to the **'USB'** folder on your ADSL CD-ROM.

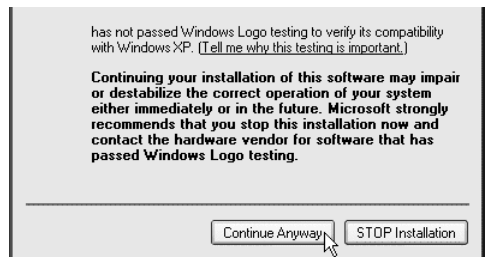
Click **Next**.



- iv Click **Finish** to complete the first stage of the USB driver installation.
- v Repeat **step ii and iii**.

- vi You may be prompted with **Hardware Installation** dialog box. (This happens when Windows detects your driver as a new version).

Click **Continue Anyway** to proceed with the installation.



- vii Click **Finish** when prompted. Upon completion, proceed with **Step 3**.

2.2 Configuring Your Ethernet Network Card

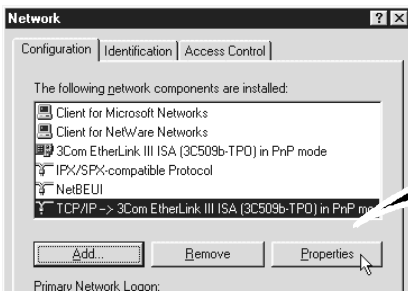


1. **DO NOT** proceed with this section if you did not connect to the Ethernet jack of your Router.
2. The following illustrated screen shots serve only as examples. For any dissimilarities, please follow closely the instructions prompted on your Computer.

2.2.1 For Windows® 98 Second Edition / Windows® Me

- i From your Windows desktop, right-click on the **Network Neighborhood** icon. Select **Properties**.
- ii From the **Configuration** tab, select **TCP/IP-> xxx** where **xxx** refers to **the model of your Ethernet Card that is connected to your Router**.

Click **Properties**.



(3Com EtherLink III ISA Ethernet card model is used as an example here)

- iii Click the option **Obtain an IP address automatically** and click **OK** to save the settings.

Ensure that your Router is powered on. Restart your system.



2.2.2 For Windows® 2000 / Windows® XP

i **Windows® 2000:**

- a) From your Windows desktop, right-click on the icon **My Network Places** and select **Properties**.
- b) At the **Network and Dial-up Connections** window, right-click on the **Local Area Connection** icon and select **Properties**.

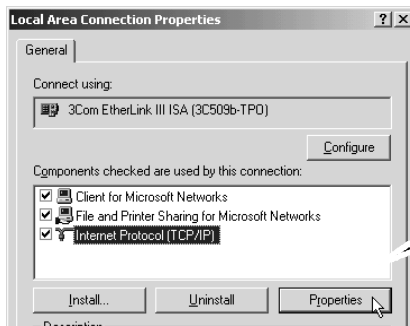
Windows® XP:

(Instructions are based on default **Start menu** option)

- a) From your Windows desktop, click **Start > All Programs > Accessories > Communications > Network Connections**.
 - b) Right-click on the **Local Area Connection** icon that reflects **the model of your Ethernet Card that is connected to your Router** and click **Properties**.
- ii Ensure that the field **Connect Using** indicates the model of your Ethernet Card that is connected to your Router.

(This is important especially if you have more than one **Local Area Connection** icons displayed at the **Network and Dial-up Connections / Network Connections** window. Ensure that you have selected the correct one.)

Select **Internet Protocol (TCP/IP)** and click **Properties**.

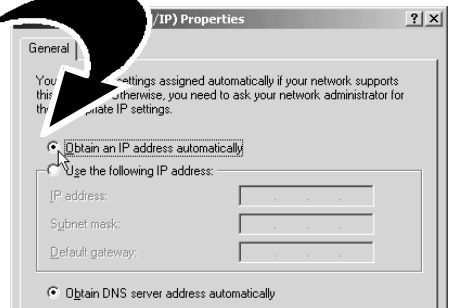


- iii Select the option **Obtain an IP address automatically** and click **OK**.

Click **OK** again to close.

Ensure that your Router is powered on.

Restart your system.



Step 3: Configuring Your Router

3.1 For Singapore Internet Broadband users

- i) Power on your computer. Place the CD-ROM onto your CD-ROM Drive.
- ii) At the dialog box prompted, click **OK**. On the **MAIN MENU**, select **RUN DSL WEB COMMANDER**.
- iii) You should see your Browser opening up DSL Web Commander page.
If you are not running DSL Web Commander from the CD-ROM, please launch your Web Browser, at the **Address** field, key in **http://192.168.1.1** and press <Enter>.
- iv) Click **Configuration > WAN Connections**.
You will be prompted for **Username** and **Password**. The default for **Username** and **Password** is **admin**. Click **OK**.
Click **Create a new service**.
 - At the **ATM** field, click **PPPoA routed**. Click **Configure**.
 - At the **Description** field, enter any description for your new connection (e.g. MyISP).
 - Overwrite **VPI=0** and **VCI=100**.
 - Click on the box **AutoDNS Discovery**.
 - Click on the box **Enable NAT on this interface** to enable NAT.
 - At the **User name** and **Password** fields, enter your user name and password as given by your Internet Service Provider.
Your User Name must be in the format of **username@ispname** (e.g. alberttan@singnet or alberttan@pacific.net.sg).Click **Configure**.
- v) Click **Configure**, followed by **Configuration > Save config** to save your settings. Close your Browser to exit DSL Web Commander.

3.2 For Other Countries Internet Broadband users

Check with your ADSL Service Provider / System Administrator for the following settings:

ADSL Service Provider

- The **ATM mode**
- For **IPoA / RFC 1483 bridged / RFC 1483 routed**:

The addresses for

WAN IP	_____
WAN Subnet Mask	_____
VPI and VCI values	_____
Default WAN Gateway	_____
DNS Relay (Enable/Disable)	_____
DNS Server (Primary)	_____
DNS Server (Secondary)	_____

- For **PPPoA bridged / PPPoA routed / PPPoE**:

The PPP Authorization's

VPI and VCI values	_____
User Name	_____
Password	_____
Auto DNS (Enable/Disable)	_____

- The **Encapsulation method** [not applicable for IPoA] _____

System Administrator

- The addresses for

LAN IP address	_____
LAN Subnet Mask	_____
Remote Gateway	_____


- To enable or disable **NAT**

- Power on your computer. Place the Installation CD onto your CD-ROM Drive.
- At the dialog box prompted, click **OK**. On the **MAIN MENU**, select **RUN DSL WEB COMMANDER**.
- Click **Configuration > WAN Connections**.
You will be prompted for **Username** and **Password**. The default for **Username** and **Password** is **admin**. Click **OK**.
Click **Create a new service**. Enter the above settings.
- Click **Configure**, followed by **Configuration > Save config** to save your settings. Close your Browser to exit DSL Web Commander.

Step 4: Configuring Your Internet Browser

To ensure that there is no conflict with your previous analog modem, please carry out the following steps on your Browser.

(Instructions are based on Microsoft® Internet Explorer™ 5.5):

- i From your Windows desktop, double-click on your Internet Explorer icon  to launch your Browser.
- ii From the Menu, click **Tools** and select **Internet Options...** .
- iii Select the **Connection** tab. Click the field, '**Never dial a connection**'.
- iv Click the **LAN Settings...** button. Ensure that your **Proxy Server** is not enabled. Click **OK** to close the dialog box.

You may start surfing the Internet now!

- *All other company or product names are trademarks or registered trademarks or service marks of their respective owners.*