

ADSL PCI Modem

Easy Start (Read Me First)

Version 1.0

Protocols Discussed:

RFC 2684 (RFC 1483)

RFC 2225 (RFC 1577)

RFC 2364

Contents

About this Easy Start...2

Minimum System Requirements...2

Step 1: Installing Your ADSL PCI Modem...3

Step 2: Connecting Your ADSL PCI Modem...4

Step 3: Installing Your ADSL PCI Modem Driver
(One-Click Installation)...5

Step 4: Configuring VPI/VCI Values for Internet
Connection...16

Step 5: Establishing Your Internet Connection
(For RFC 2364 only)...18

Product warranty does not apply to damage caused by lightning, power surges or wrong voltage usage.

About this Easy Start

This booklet contains information on setting up your ADSL PCI Modem. It touches on the key installation procedures and allows you to setup your modem within minutes!

For users who have not installed a modem card before, it is recommended that you refer to the User Manual on the Installation CD for detailed installation instructions. It also contains the sections on Frequently Asked Questions and Troubleshooting Guide.

(Print out the entire User Manual for your easy reference.)



Please read the **ReadMe.txt** file on the Installation CD for any new updates on the product.

Minimum System Requirements

- IBM PC-based computer with Pentium® MMX 233 processor or equivalent
- 1 CD-ROM drive
- 1 free PCI-Bus slot
- 32MB RAM
- 30MB free hard disk space for system files and modem driver (Windows CD-ROM may be required during installation, depending on your system's configurations.)
- Windows® 95 OSR2.1
Windows® 98
Windows® 98 Second Edition
Windows® Me
Windows® 2000 or
Windows NT® 4.0

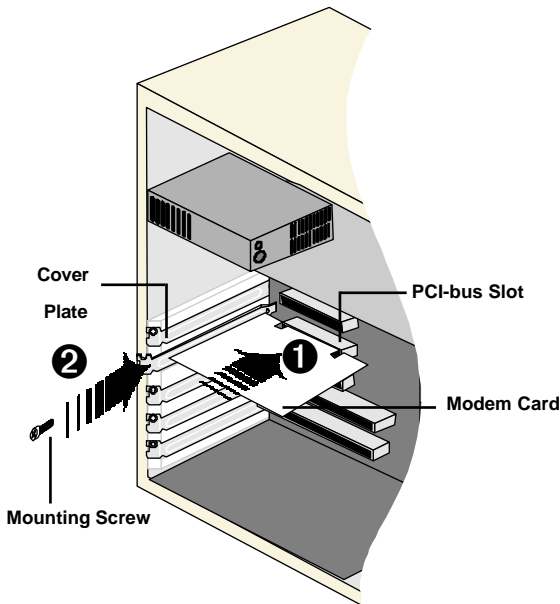
Step 1: Installing Your ADSL PCI Modem



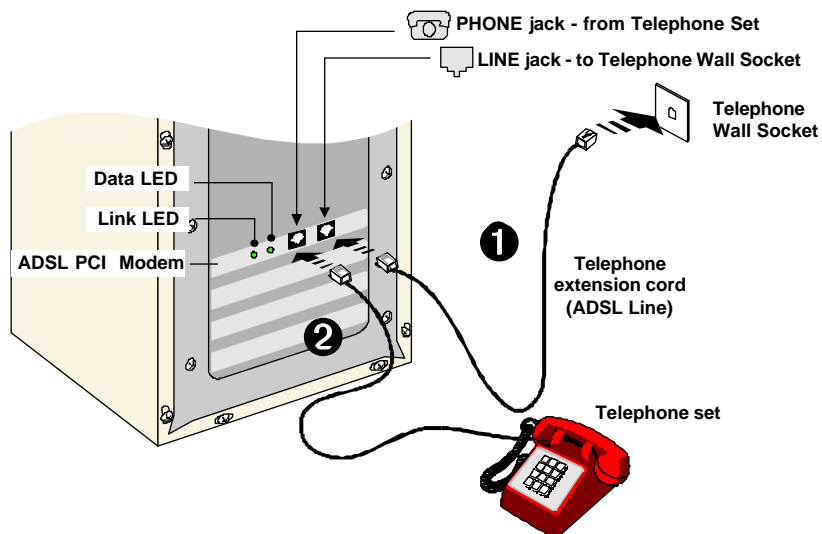
Power off your computer and any connected devices before connecting your modem card!

After removing the cover of your computer, locate any available PCI-Bus slot and remove its cover plate.

- 1 Insert your modem card firmly into the PCI-Bus slot.
- 2 Secure the modem card with the mounting screw and replace the cover of your computer.



Step 2: Connecting Your ADSL PCI Modem



Connect your card as illustrated above. Upon completion, please proceed with the following section to install the card driver.



1. The connection for the **Telephone set** is **optional**. The **Phone jack** provides convenience to users who need to use the phone when accessing the computer.
2. **No external Micro-Filter** is required as your ADSL PCI Modem has a built-in Micro-Filter at the Phone jack.

Step 3: Installing Your ADSL PCI Modem Driver (One-Click Installation)

This section contains the installation procedures for protocols:

- **RFC 2684** (also known as RFC 1483)
- **RFC 2225** (also known as RFC 1577) and
- **RFC 2364**

You only need to install one of the protocols as determined by your Internet Service Provider.

The modem driver installation comes with both **One-Click Installation*** and **Manual Installation** instructions. One-Click installation allows you to automate installation in just a few steps whereas Manual Installation requires you to manually step through the entire installation process.

This guide contains only the One-Click Installation* instructions. For Manual installation, please refer to the User Manual - **Installing Your ADSL PCI Modem Driver (Manual Installation)**.

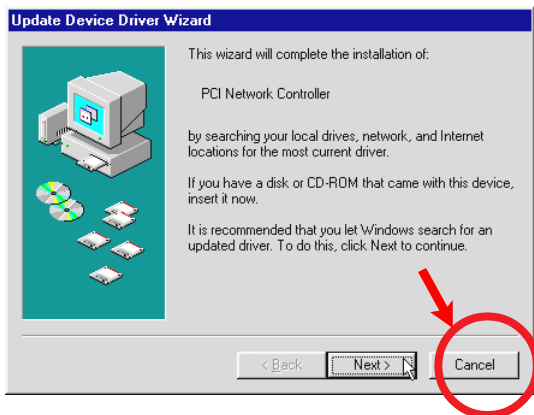


1. **The screen shots, screens information and steps illustrated in this booklet serve only as a guide. The exact information and steps you see on your system may vary, depending on your system's configurations. For any dissimilarities, follow closely to the instructions as prompted on your PC screen.**
2. System may prompt for your **Windows CD-ROM** during the driver installation. Have it ready by your side.
3. **For Windows NT® 4.0 users, One-Click Installation is not supported. Please refer to the User Manual (on the Installation CD) for your driver installation instructions.**

* *One-Click Installation is not supported in Windows NT® 4.0. Please refer to the user manual found on the Installation CD for Windows NT® 4.0 Manual Installation.*

3.1 One-Click Installation - For Windows® 95 OSR2.1

- i) Power on your computer to start Windows. It will detect your newly-installed ADSL PCI Modem and prompt for its driver. Click **Cancel**.

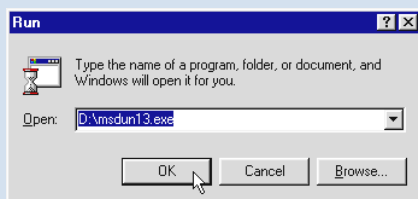


For RFC 2364 users:

You need to have **Microsoft Dial-Up Networking (DUN) version 1.3** and above, installed in your system. If you already have it installed in your system, please proceed with the next step.

If not, please carry out the following steps to install the utility before proceeding with the next step.

- a) Go to Microsoft's website: <http://www.microsoft.com>.
- b) In the Microsoft **Search** path, enter **Msdun13.exe**. From the results listed, locate and select **MSDUN13.EXE: Dial-Up Networking 1.3 Upgrade**.
- c) Click **Msdun13.exe** to download the file to your harddisk. *[file size is about 2.4MBytes]*
- d) From your Windows taskbar, click **Start > Run...**. Browse to the directory where you have downloaded **Msdun13.exe**. Select the file and click **OK**.



Click **OK** again.

- e) At the prompt to install Dial-Up Networking, click **Yes** to proceed.
- f) At the **Microsoft TCP/IP Networking** prompt, click **Yes**.
- g) When prompted to restart, click **OK**.

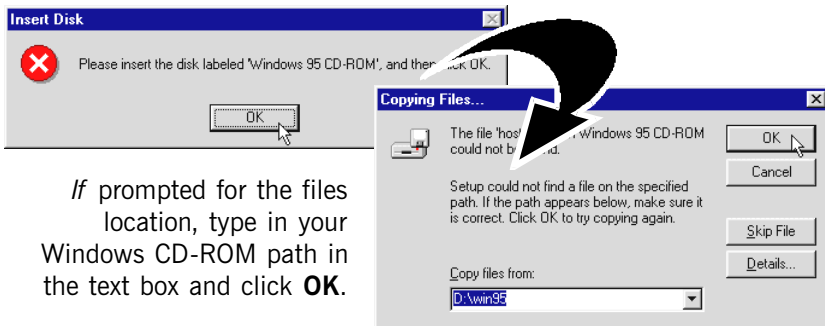
ii) Place the Installation CD into your CD-ROM Drive. A Main Menu will be prompted.

(If you do not see the Menu displayed, double-click on **My Computer** icon. Locate your **CD-ROM Drive** icon and double-click on it. *Alternatively*, you may double-click on the **setup.exe** at the **util** folder on the Installation CD.)

On the Menu, click the circle corresponding to the protocol you are installing. Installation will commence.

iii) Depending on your system's configurations, you may be prompted for your **Windows CD-ROM** for some missing files.

Replace the Installation CD in your CD-ROM drive with your **Windows CD-ROM** and click **OK**.



If prompted for the files location, type in your Windows CD-ROM path in the text box and click **OK**.

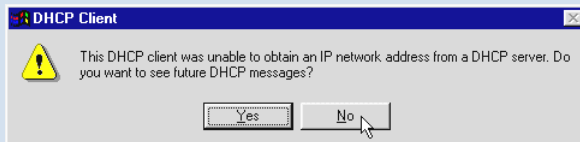
Allow some time for system to install and copy all required files for your modem. See note on the following page.



For RFC 2684 (RFC 1483) users:

Upon files copying complete, system will automatically restart. (Rebooting may take a while.)

You may be prompted with DHCP Client. Click **No**.



This completes your driver installation. Please proceed to **Step 4** to configure the VPI/VCI values.

For RFC 2364 users:

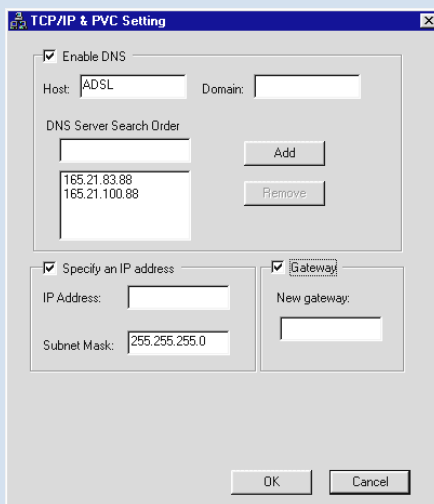
Upon files copying complete, system will automatically restart. (Rebooting may take a while.)

If you are installing a modem in your computer for the first time, you may be prompted for your location information. Enter the relevant information and click **Close**.

This completes your driver installation. Please proceed to **Step 4** to configure the VPI/VCI values.

For RFC 2225 (RFC 1577) users:

You will be prompted with the **TCP/IP & PVC Setting** dialog box as shown below.



Enter the **IP Address** and **New Gateway** fields with the addresses given by your Internet Service Provider.

Overwrite the default values with values given by your Internet Service Provider, when necessary.

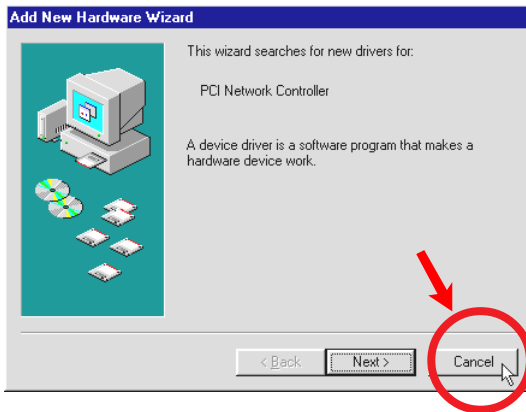
Click **OK**.

At the prompt for restart, click **OK**.

Please proceed to **Step 4** to configure the VPI/VCI values.

3.2 One-Click Installation - For Windows® 98 / 98 Second Edition

- i) Power on your computer to start Windows. It will detect your newly-installed ADSL PCI Modem and prompt for its driver. Click **Cancel**.



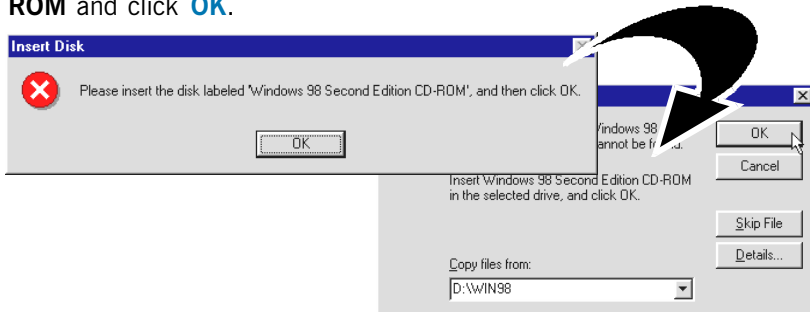
- ii) Place the Installation CD into your CD-ROM Drive. A Main Menu will be prompted.

(If you do not see the Menu displayed, double-click on **My Computer** icon. Locate your **CD-ROM Drive** icon and double-click on it. Alternatively, you may double-click on the **setup.exe** at the **util** folder on the Installation CD.)

On the Menu, click the circle corresponding to the protocol you are installing. Installation will commence.

- iii) Depending on your system's configurations, you may be prompted for your **Windows CD-ROM** for some missing files.

Replace the Installation CD in your CD-ROM drive with your **Windows CD-ROM** and click **OK**.



If prompted for the files location, type in your Windows CD-ROM path in the text box and click **OK**.

Allow some time for system to install and copy all required files for your modem.

- iv) Upon completion, system will automatically restart. (Rebooting may take a while.)

For RFC 2364 and RFC 2225 (RFC 1577) users, see the note below.

For RFC 2684 (RFC 1483) users, please proceed to **Step 4** to configure the VPI/VCI values.



For RFC 2364 users:

If you are installing a modem in your computer for the first time, you may be prompted for your location information. Enter the relevant information and click **Close**. Please proceed to **Step 4** to configure the VPI/VCI values.

For RFC 2225 (RFC 1577) users:

From the **TCP/IP & PVC Setting** dialog box, enter the **IP Address** and **New Gateway** fields with the addresses given by your Internet Service Provider.

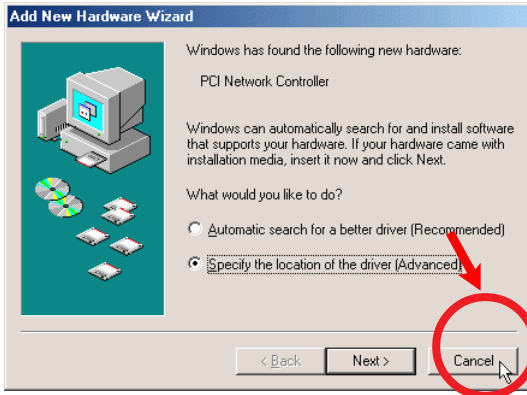
Overwrite the default values with values given by your Internet Service Provider, when necessary. Click **OK**.

At the prompt for restart, click **OK**.

Please proceed to **Step 4** to configure the VPI/VCI values.

3.3 One-Click Installation - For Windows® Me

- i) Power on your computer to start Windows. It will detect your newly-installed ADSL PCI Modem and prompt for its driver. Click **Cancel**.



- ii) Place the Installation CD into your CD-ROM Drive. A Main Menu will be prompted.

(If you do not see the Menu displayed, double-click on **My Computer** icon. Locate your **CD-ROM Drive** icon and double-click on it. Alternatively, you may double-click on the **setup.exe** at the **util** folder on the Installation CD.)

On the Menu, click the circle corresponding to the protocol you are installing. Installation will commence.

- iii) Allow some time for your system to install and copy all the required files for your modem. Upon completion, system will restart automatically. (Rebooting may take a while.)

For RFC 2364 and RFC 2225 (RFC 1577) users, see the note on the following page.

For RFC 2684 (RFC 1483) users, please proceed to **Step 4** to configure the VPI/VCI values.



For RFC 2364 users:

If you are installing a modem in your computer for the first time, you may be prompted for your location information. Enter the relevant information and click **Close**. Please proceed to **Step 4** to configure the VPI/VCI values.

For RFC 2225 (RFC 1577) users:

You will be prompted with the dialog box shown below.

Enter the **IP Address** and **New Gateway** fields with the addresses given by your Internet Service Provider.

Overwrite the default values with values given by your Internet Service Provider, when necessary.

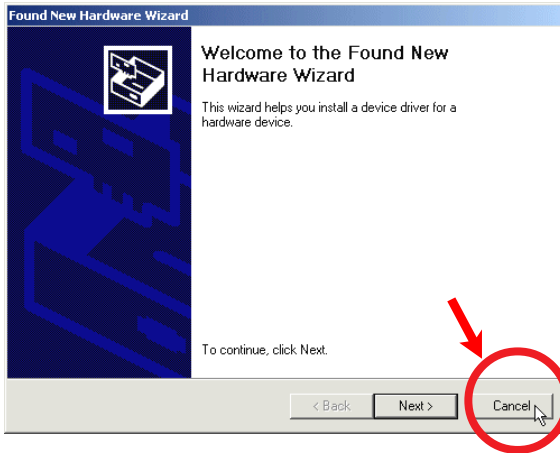
Click **OK**.

At the prompt for restart, click **OK**.

Please proceed to **Step 4** to configure the VPI/VCI values.

3.4 One-Click Installation - For Windows® 2000

- i) Power on your computer to start Windows. It will detect your newly-installed ADSL PCI Modem and prompt for its driver. Click **Cancel**.



- ii) Place the Installation CD into your CD-ROM Drive. A Main Menu will be prompted.

(If you do not see the Menu displayed, double-click on **My Computer** icon. Locate your **CD-ROM Drive** icon and double-click on it. Alternatively, you may double-click on the **setup.exe** at the **util** folder on the Installation CD.)

Click on the circle corresponding to the protocol you are installing. Installation will commence.

- iii) You may be prompted with **Digital Signature Not Found** dialog box. This occurs when Windows detected a newer version of your driver. Click **Yes** to proceed.
- iv) Allow some time for your system to automatically install and copy all the required files for your modem.
- v) You will be prompted '**Installation Completed Successfully**'. Click **OK**. Click **Exit** from the Menu.

For RFC 2684 (RFC 1483) and RFC 2364 users:

Please proceed to **Step 4** to configure the VPI/VCI values.

For RFC 2364 users, if you are installing a modem in your computer for the first time, you may be prompted for your location information. Enter the relevant information and click **Close**.

For RFC 2225 (RFC 1577) users:

- a) From your Windows desktop, right-click on the icon **My Network Places**. Select **Properties**.
- b) From your Windows desktop, right-click on **My Network Places** icon and select **Properties**.

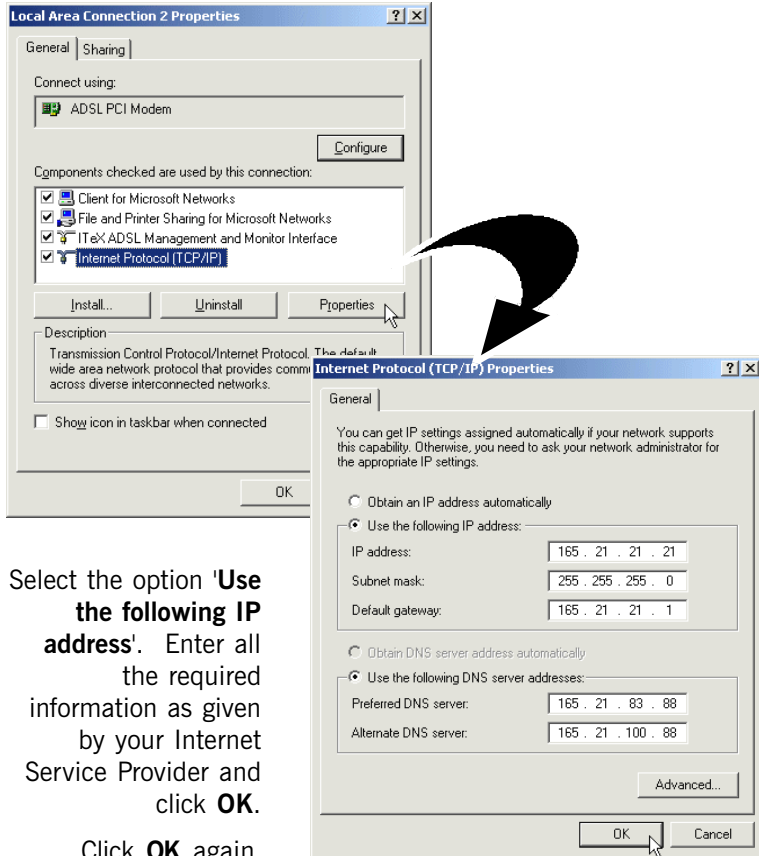
At the **Network and Dial-up Connections** window, double-click on the **Local Area Connection** icon.



If you have previously installed Network Card(s) and/or Modem Card(s) in your system, you will see more than one **Local Area Connection** icons displayed. Double-click on one of the icons. From the **Connect using** field at the Properties dialog box, you should see **ADSL PCI Modem** listed (see the following page for illustration). If not, double-click another **Local Area Connection** icon and check.

Ensure that the field **Connect Using** indicates **ADSL PCI Modem**.
(Else, you need to re-install your modem driver.)


Select **Internet Protocol (TCP/IP)** and click **Properties**.

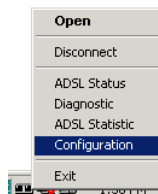


- c) Select the option '**Use the following IP address**'. Enter all the required information as given by your Internet Service Provider and click **OK**.
Click **OK** again.

Please proceed to **Step 4** to configure the VPI/VCI values.

Step 4: Configuring VPI/VCI Values for Internet Connection

- i) Right-click on the **MAPI Icon**[†] . Select **Configuration**.



- ii) The following window will be prompted.
 (The options for RFC 2684, 2225 and 2364 are similar. The illustration shown here is based on RFC 2364.)

The Configuration dialog box contains the following elements:

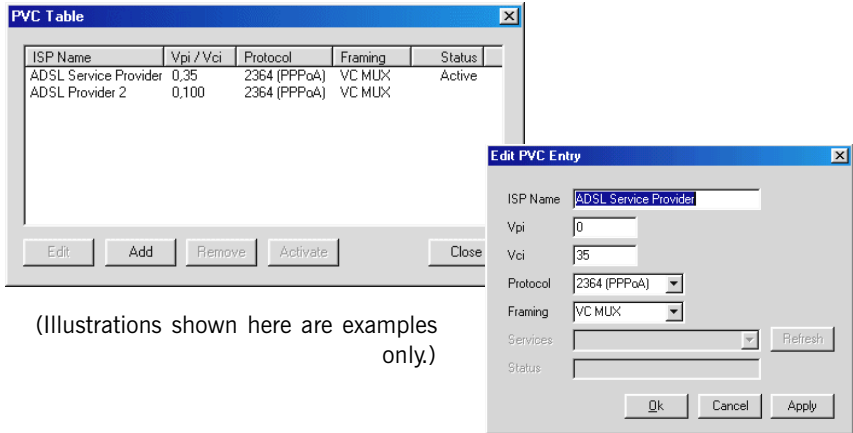
- PVC Setup:** A dropdown menu for "ADSL Service Provider" with a "Set As Active" button next to it.
- PVC Table:** A button to the left of the "Set As Active" button.
- Select ADSL Mode:** A section with three radio button options:
 - ANSI T1.413 Issue 2
 - ITU G.992.2 Annex A (G.lite)
 - ITU G.992.1 Annex A (G.dmt)
 A "Set Mode" button is located to the right of these options.
- Buttons:** "Close" at the bottom center.

Callouts from the text provide the following instructions:

- "Click to configure and add multiple VPI/VCI values (see step iii)" points to the "PVC Table" button.
- "Click to select your Internet Service Provider." points to the "ADSL Service Provider" dropdown menu.
- "Click to activate the listed Service Provider." points to the "Set As Active" button.
- "Click **Set Mode** if you have make changes to the ADSL mode." points to the "Set Mode" button.
- "Click to exit." points to the "Close" button.

[†] *MAPI Icon will be displayed at your Windows system tray after you have successfully installed your modem driver. This icon will allow you to monitor your ADSL line connection, configure your VPI/VCI values and so on. The different MAPI LEDs light indicate different connection states. For details, please refer to **Appendix A - ADSL MAPI Icon** on the User Manual.*

- iii) To configure **VPI/VCI values**, add **multiple ISP names** or **multiple VPI/VCI values**, click **PVC Table**.



(Illustrations shown here are examples only.)

To **edit** the existing configuration or to change the ISP Name, double-click on it. Overwrite the existing values with your new ones and click **OK**.

To **add** a new configuration, click **Add**. Enter your new ISP Name, VPI, VCI values and click **OK**.

To **remove** an existing configuration, click on the ISP Name and click **Remove**.

You may **activate** any of your configurations by selecting the ISP Name and click **Activate**.

For RFC 2684 and 2225 users, you may double-click your browser to begin your Internet surfing!

For RFC 2364 users, please proceed to **step 5** to establish your Internet connection.

Step 5: Establishing Your Internet Connection (For RFC 2364 only)

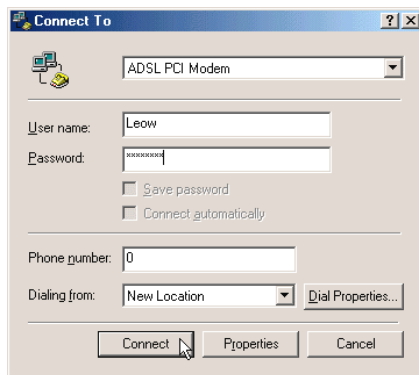
- i) From your Windows desktop, a **ADSL PCI Modem** dial-up icon will be generated. Double-click on it.
- ii) A dialog box similar to the one shown on your right will be prompted.

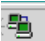
(The illustrated screen is based on Windows® Me. Different operating systems may have their screen differ slightly.)

Enter the required information.

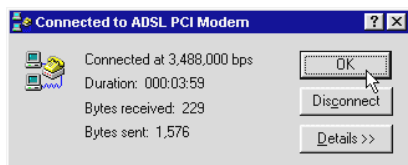
Ensure that the **MAPI Icon** (at your system tray) shows both the leds **black** in colour (indicating ADSL line is established).

Click **Connect** to dial up to the Internet.



- iii) Upon successful dial-up, you should be able to see an icon () displayed at the corner of your Windows taskbar. Double-click your browser to begin your Internet surfing!

Double-click on the icon. You will be able to see the following information.



(The connection speed indicates the speed that the ADSL modem can achieved. Your actual connection speed will depend on the subscription plan that you have signed-up with your ADSL Service Provider.)

Check your connection time by looking at the **Duration**. Click **Disconnect** to end the session.

- *All other company or product names are trademarks or registered trademarks or service marks of their respective owners.*