

DSL700P

Version 1.2

ADSL MODEM CARD

User's Manual

(Configured for SingTel Magix Service)



Internet at its fastest.

Product warranty does not apply to damage caused by lightning, power surges or wrong voltage usage.

Contents



Chapter 1	Introduction	5
	1.1 Package	6
Chapter 2	Before You Begin	7
	2.1 Minimum System Requirements	7
	2.2 Safety Precaution	8
	2.3 Installation Notes	8
Chapter 3	Setting Up Your ADSL Modem	9
	3.1 Installing Your ADSL Modem	9
	3.2 Connecting Your ADSL Modem	11
Chapter 4	Installing Your ADSL Modem Driver	12
	4.1 Installing Your ADSL Modem Driver - For Windows® 98 / Windows® 98 Second Edition	13
	4.2 Installing Your ADSL Modem Driver - For Windows® Me	16
	4.3 Installing Your ADSL Modem Driver - For Windows® XP	18
	4.4 Installing Your ADSL Modem Driver - For Windows® 2000	21
Chapter 5	Verifying Your ADSL Modem.....	25
Chapter 6	Ready to Go!	28
	6.1 Connection Ready.....	28
	6.2 Checking Your ADSL Line Status	28
Chapter 7	Uninstalling Your ADSL Modem Driver.....	29

Appendix A **ADSL MAPI Icon 30**
A-1 MAPI LEDs 30
A-2 MAPI Menu 31

Appendix B **Technical Specifications 35**
B-1 Drivers Support 35
B-2 Features 35
B-3 ADSL Chipset 36
B-4 ADSL Software Support 37
B-5 Interfaces 37

Appendix C **Frequently Asked Questions 38**

Appendix D **Troubleshooting Guide 41**

Appendix E **Technical Support 45**
E-1 Aztech Sales Enquiries 45
E-2 Aztech Technical Support 45
E-3 Technical Support Considerations 45

Chapter 1



Introduction

Congratulations on your purchase of DSL700P ADSL Modem card!

ADSL, which stands for **Asymmetric Digital Subscriber Line**, is the latest communication technology that offers faster and uninterrupted Internet access.

The **DSL700P** is a PCI based Controller-less ADSL modem. It is capable of data rate in both Full-Rate and G.Lite, with **Full Rate transmission up to 8 Mbps downstream, 640 Kbps upstream** and **G.Lite transmission up to 1.5 Mbps downstream, 512 Kbps upstream**.

The ADSL modem makes use of your existing phone line for Internet surfing and at the same time, allows you to talk on the phone! As your phone line is dedicated to your home, your connection to the Internet will also be highly secured and reliable!

DSL700P definitely meets more than comfortably, the demands of today's bandwidth intensive applications!

1.1 Package

Check that you have the following listed items inside your DSL700P package. For any missing items, please contact your dealer immediately.

- 1 DSL700P ADSL Modem Card
- 1 DSL700P Installation CD
- Micro-Filter (*optional - can be purchased separately from your dealer*)
- 1 RJ-11 Telephone Extension cable
- This User Manual

Chapter 2

Before You Begin

This chapter contains information that you need to know before installing your modem card. Please go through them before proceeding with the installation.

2.1 Minimum System Requirements*

2.1.1 Hardware

- IBM PC-based computer with Pentium® MMX 233 processor or equivalent
- 1 CD-ROM drive
- 1 free PCI-Bus slot
- 32MB RAM
- 30MB free hard disk space# for system files and modem drivers
(Windows CD-ROM may be required during installation, depending on your system configurations.)

* The information listed are minimum system requirements needed to install your ADSL modem card. Please check and ensure that your system also meets the minimum system requirements set by the ADSL Service Provider you subscribed to. Your system should meet the higher requirements of the two.

#Additional free hard disk space may be required for your ADSL Service Provider installation program and browser installation. Please check with your Service Provider.

2.1.2 Software - Operating System

- Windows® 98
- Windows® 98 Second Edition
- Windows® Me
- Windows® XP
- Windows® 2000

2.2 Safety Precaution

- Do not remove your card from its protective bag until you are ready to install it.
- Always try to hold your card by its edges. Avoid touching any electronic components on your card.
- Static electricity can cause permanent damage to your card. To prevent such a damage, you must ground yourself during the installation:
 - » Use a grounding strap - a coiled wire with a clip at one end and an elastic strap at the other. Wear the strap around your wrist and attach the clip to any non-painted metal surface of your computer chassis.
 - » If you do not have a grounding strap, touch any non-painted surface of your computer chassis before you begin installation, and again every minute or so until the installation is completed.

2.3 Installation Notes

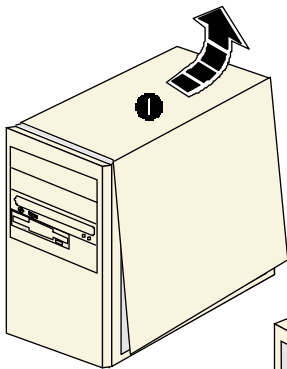
- The graphics and screen illustrations shown in this manual may differ from what you see in your system, but the steps still apply.
- A Philips screwdriver is required.
- The documentation for your computer should come in handy during the installation. Have it ready by your side.
- You may be prompted for your Windows CD-ROM during the driver installation. Have it ready by your side.

Chapter 3

Setting Up Your ADSL Modem

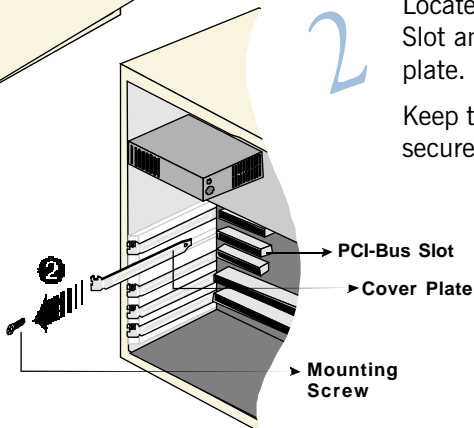
This chapter contains information on how to install and connect your modem card to your computer.

3.1 Installing Your ADSL Modem



1

Remove the cover of your computer.



2

Locate any available PCI-Bus Slot and remove its cover plate.

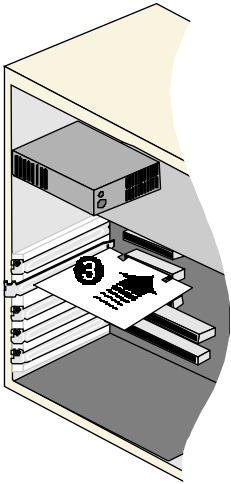
Keep the mounting screw to secure your card later.

► PCI-Bus Slot

► Cover Plate

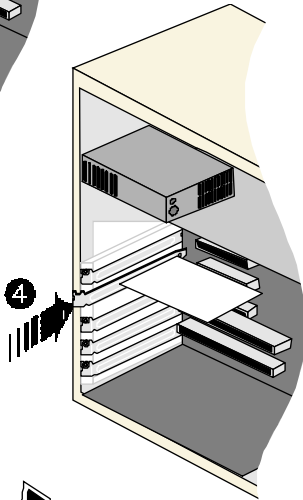
► Mounting Screw

3. Setting Up Your ADSL Modem

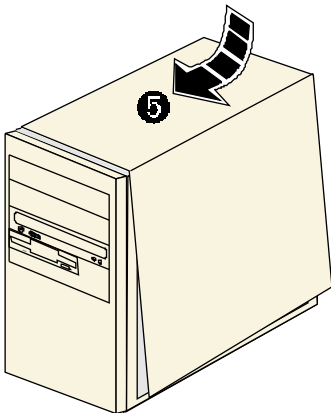


3 Align your card with the selected PCI-Bus slot and firmly push it into the slot.

If the card does not slide in, do not force it. Make sure that the card is aligned properly and try again.



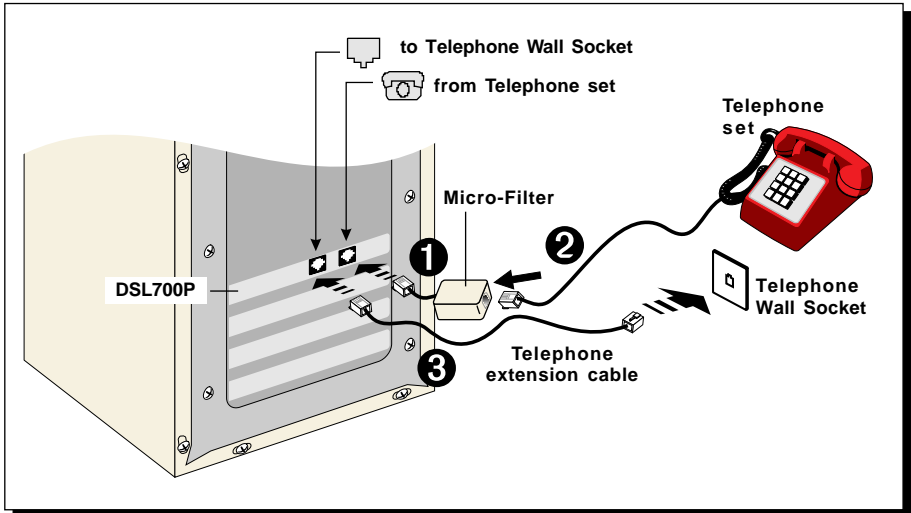
4 Secure your card to the computer chassis with the mounting screw.



5 Replace the cover of your computer.

This completes the ADSL modem card installation. Please proceed to the following section to connect your card to ADSL line for Internet access.

3.2 Connecting Your ADSL Modem



Carry out the connections as illustrated above.

This completes the ADSL modem card connection. Please proceed with the next chapter to install the driver for your modem.



The connection to the **Telephone set** is **optional**. The **Phone** jack provides convenience to users who need to use the phone when accessing the computer.

The Micro-Filter can be purchased separately from your dealer. The use of Micro-Filter is not required if you are not connecting to a **Telephone set**. For more details on the Micro-Filter usage, you may refer to the **Frequently Asked Questions**, '*Do I need to use Micro-Filter when using ADSL?*'.

Chapter 4



Installing Your ADSL Modem Driver

This chapter contains information on how to install the driver for your modem card in Windows® 98, Windows® 98 Second Edition, Windows® Me, Windows® XP and Windows® 2000.

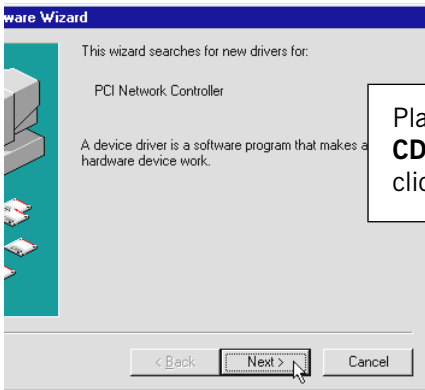


1. The screens illustrations in this chapter assume that your **CD-ROM Drive** is 'D'. Please change the letter according to your own CD-ROM drive.
2. **Depending on your system configurations, you may be prompted for the Windows CD-ROM during the driver installation. Have it ready by your side.**
3. **The screen shots, screens information and steps illustrated in this manual serve only as a guide. The exact information and steps you see on your system may vary, depending on your system configurations. For any dissimilarities, follow closely to the instructions as prompted on your PC screen !**

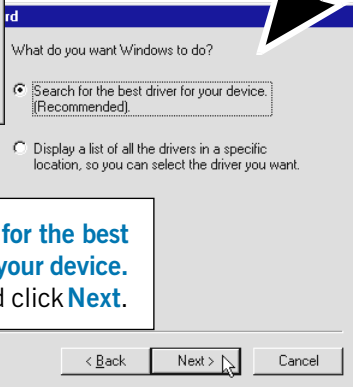


4.1 Installing Your ADSL Modem Driver - For Windows® 98 / Windows® 98 Second Edition

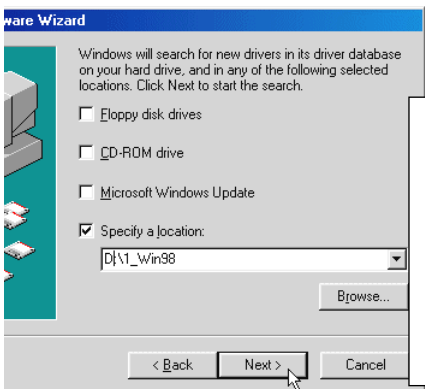
Power on your computer to start Windows. It will detect your newly-installed ADSL modem card and prompt for its driver.



1
Place the **DSL700P Installation CD** into your CD-ROM Drive and click **Next**.



2
Click the option **'Search for the best driver for your device. (Recommended).'** and click **Next**.

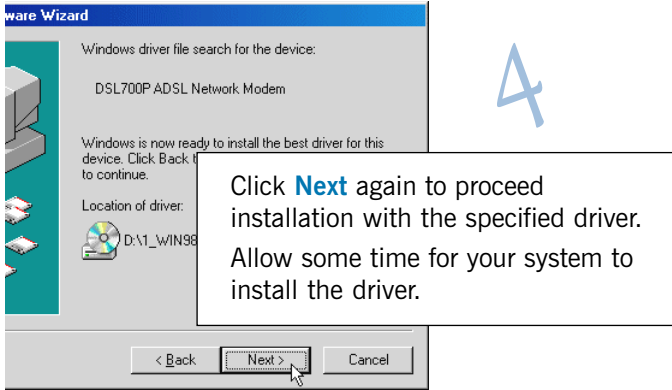


3
Click **'Specify a location'** to specify the driver path. **Ensure that the option CD-ROM drive is not selected as shown.**

Click **Browse** and navigate to **'\1_Win98'** folder on your Installation CD and click **OK**.

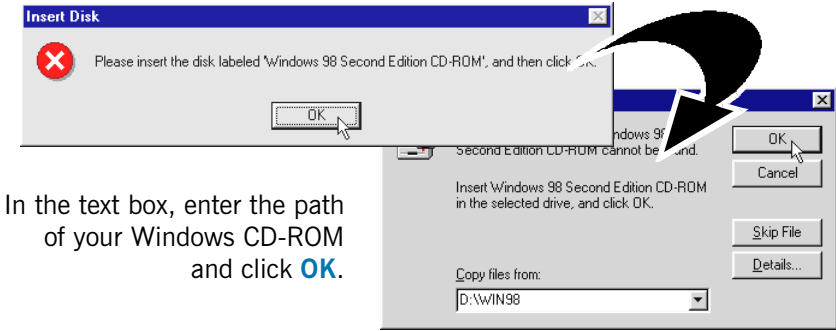
Click **Next**.

4. Installing Your ADSL Modem Driver



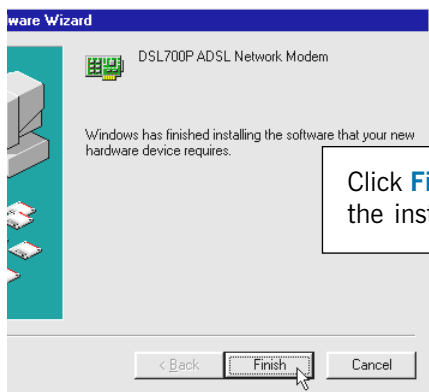
5

Depending on your system configurations, you *may* be prompted for your **Windows 98 / 98 Second Edition CD-ROM** for some missing files. Replace the **DSL700P Installation CD** in your CD-ROM drive with your Windows CD-ROM and click **OK**.



In the text box, enter the path of your Windows CD-ROM and click **OK**.

(The path shown here is only an example)



6

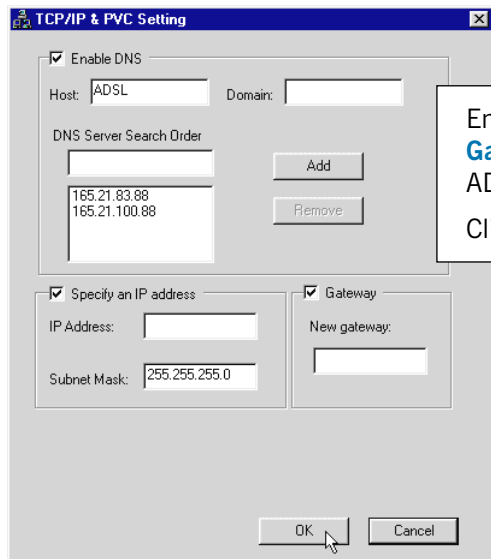
Click **Finish** to complete the installation process.



7

Click **Yes** to restart your system.

Upon system rebooted, you will be prompted with the following dialog box.



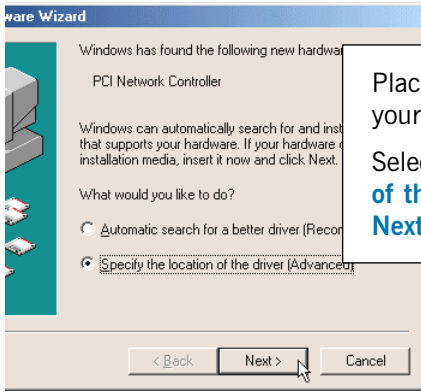
Enter the **IP Address** and **New Gateway** Address as given by your ADSL Service Provider.
Click **OK**.

Restart your system when prompted. (Allow some time for your system to restart.)

Upon system rebooted, please proceed with the following chapter to verify if your card has been installed properly.

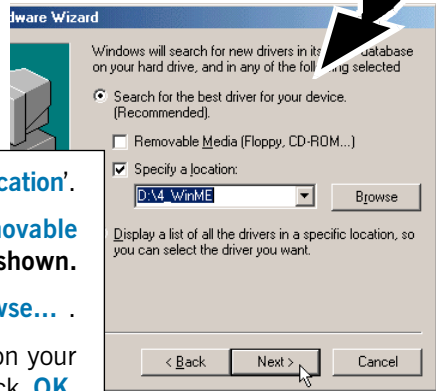
4.2 Installing Your ADSL Modem Driver - For Windows® Me

Power on your computer to start Windows. It will detect your newly-installed ADSL modem card and prompt for its driver.



1 Place the **DSL700P Installation CD** into your CD-ROM Drive.

Select the option '**Specify the location of the driver (Advanced)**' and click **Next**.



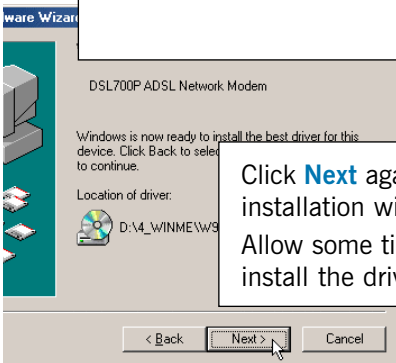
2 Select the option '**Specify a location**'.

Ensure that the option **Removable Media** is not selected as shown.

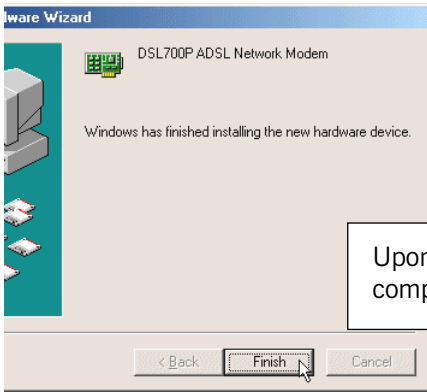
Click **Browse...**

Navigate to '**4_WinMe**' folder on your Installation CD and click **OK**.

Click **Next**.



3 Click **Next** again to proceed installation with the specified driver. Allow some time for your system to install the driver.



Upon copying files complete, click **Finish**.

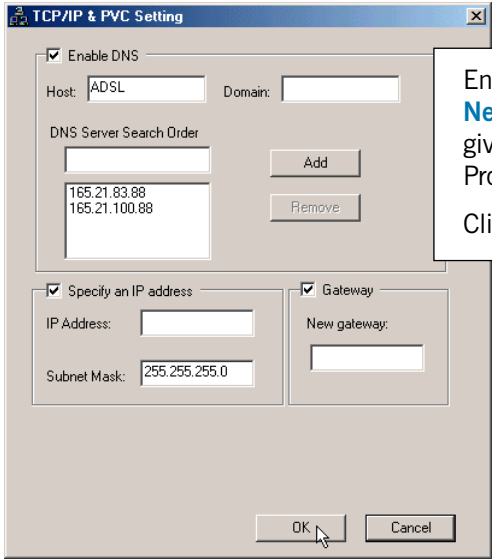


5

Click **Yes** to restart your system.



Upon system rebooted, you will be prompted with the following dialog box.



Enter the **IP Address** and **New Gateway** Address as given by your ADSL Service Provider.
Click **OK**.

6

Restart your system when prompted. (Allow some time for your system to restart.)

Upon system rebooted, please proceed with the following chapter to verify if your card has been installed properly.

4.3 Installing Your ADSL Modem Driver - For Windows® XP

Power on your computer to start Windows. It will detect the newly-installed ADSL modem card and prompt for its driver.

1

Welcome to the Found New Hardware Wizard

This wizard helps you install software for:

Network Controller

If your hardware came with an installation CD or floppy disk, insert it now.

What do you want the wizard to do?

Install the software automatically (Recommended)

Install from a list or specific location (Advanced)

Click Next to continue.

< Back **Next >** Cancel

Select **Install from a list or specific location (Advanced)** and click **Next**.

2

Search for the best driver in these locations.

Use the check boxes below to limit or expand the default search, which includes local paths and removable media. The best driver found will be installed.

Search removable media (floppy, CD-ROM...)

Include this location in the search:

d:\5_WinXP Browse

Select the driver to install.

Click the device driver from a list. Windows does not guarantee that the driver will be the best match for your hardware.

< Back **Next >** Cancel

Select **Search for the best driver in these locations**.

Check the box **Include this location in the search**.

Ensure that the option **Search removable media** is not selected as shown.

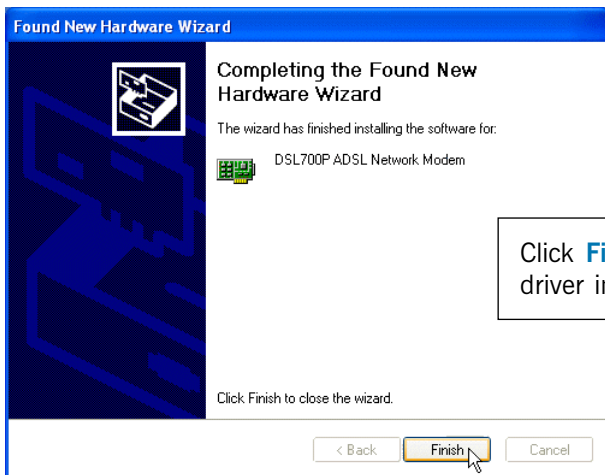
Click **Browse** and navigate to '**5_WinXP**' folder on the Installation CD.

Click **Next**.



3

At the following prompt, click **Continue Anyway**.



4

Click **Finish** to complete the driver installation.

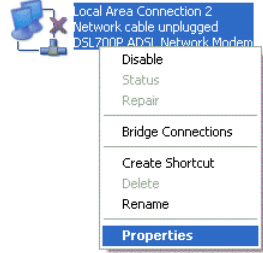
Proceed with the following steps to configure the TCP/IP Properties.

4. Installing Your ADSL Modem Driver

5

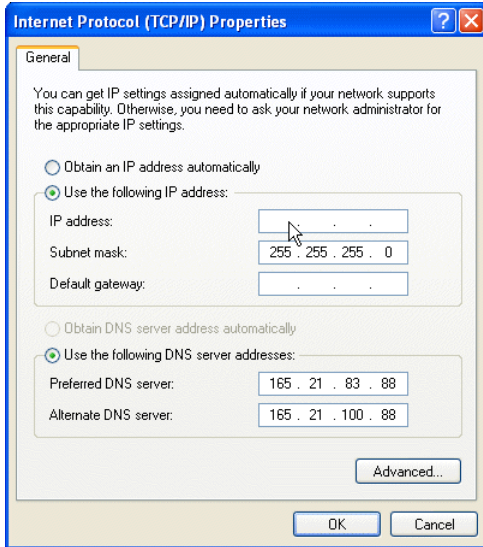
From your Windows desktop, click **Start > All Programs > Accessories > Communications > Network Connections**.

Right-click on the **Local Area Connection** icon that reflects DSL700P model and click **Properties**.



6

Select **Internet Protocol (TCP/IP)** and click **Properties**.



7

Enter the **IP address** and **Default gateway** addresses as given by your ADSL Service Provider. For the rest of the fields, enter as follow:

Subnet mask:
255.255.255.0

Preferred DNS server:
165.21.83.88

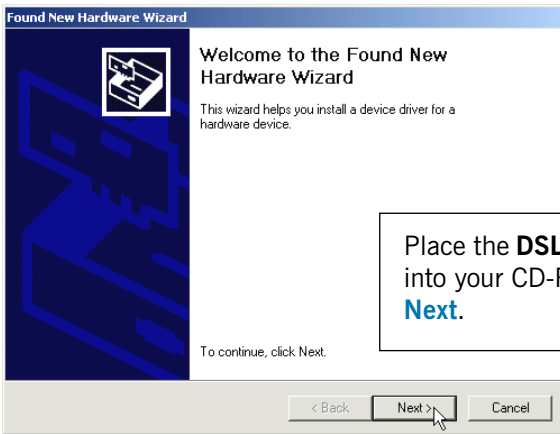
Alternate DNS server:
165.21.100.88

Click **OK**.

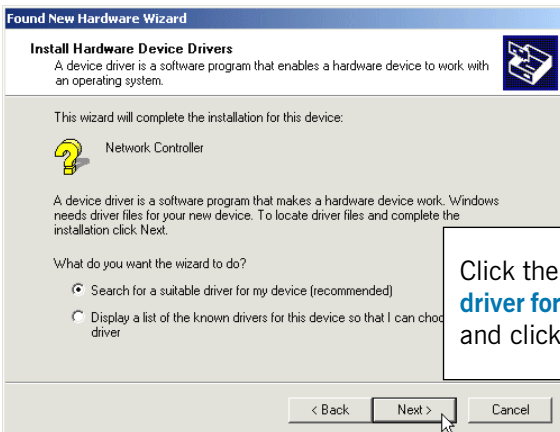
This completes the driver installation for your ADSL modem card in Windows® XP. You may now proceed with the following chapter to verify if your card has been installed properly.

4.4 Installing Your ADSL Modem Driver - For Windows® 2000

Power on your computer to start Windows. It will detect your newly-installed ADSL Network Modem Card and prompt for its driver.

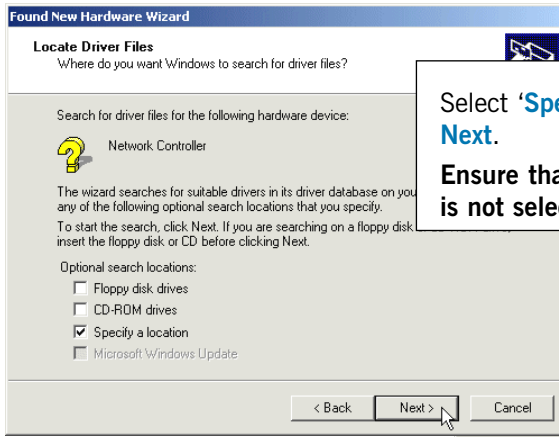


Place the **DSL700P Installation CD** into your CD-ROM Drive and click **Next**.



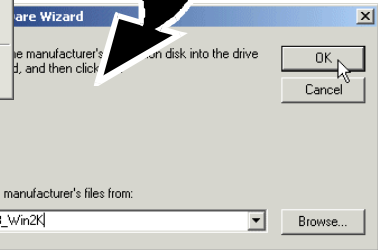
Click the option '**Search for a suitable driver for my device (recommended)**' and click **Next**.

4. Installing Your ADSL Modem Driver

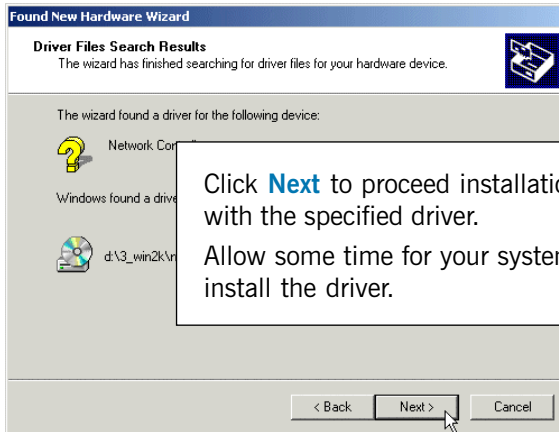


Select '**Specify a location**' and click **Next**.

Ensure that the option **CD-ROM drives** is not selected as shown.



Click **Browse**. Navigate to '**3_Win2K**' folder on your Installation CD. Click **OK**.



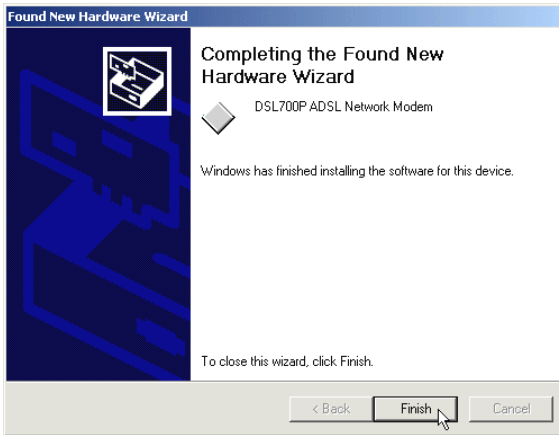
Click **Next** to proceed installation with the specified driver. Allow some time for your system to install the driver.

6

You may be prompted with **New Signature Not Found** dialog box. This occurs when Windows detected a newer version of your driver. Click **Yes** to proceed.

7

Click **Finish** to complete the installation.

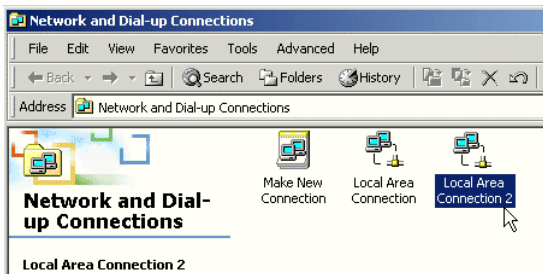


Proceed with the following steps to configure the TCP/IP Properties.

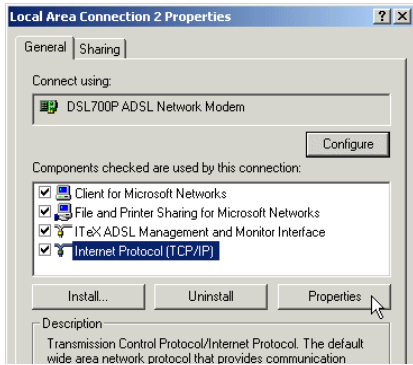
8

From your Windows desktop, right-click on **My Network Places** icon and select **Properties**.

At the **Network and Dial-up Connections** window, right-click on the **Local Area Connection** icon and select **Properties**.



4. Installing Your ADSL Modem Driver

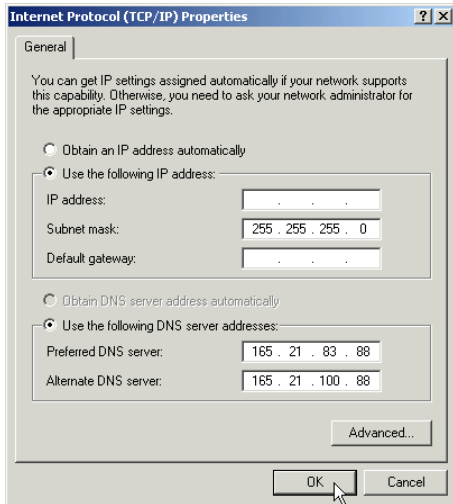


9

Check that the **Connect using** field reflects **DSL 700P ADSL Network Modem**.

*(This is important if you have more than one **Local Area Connection** icons displayed. If you do not see your modem model listed, right-click another **Local Area Connection** icon and check.)*

Select **Internet Protocol (TCP/IP)** and click **Properties**.



10

Enter the **IP address** and **Default gateway** addresses as given by your ADSL Service Provider. For the rest of the fields, enter as follow:

Subnet mask:
255.255.255.0

Preferred DNS server:
165.21.83.88

Alternate DNS server:
165.21.100.88

Click **OK**.

This completes the driver installation for your ADSL modem card in Windows® 2000.

You may now proceed with the following chapter to verify if your card has been installed properly.

Chapter 5



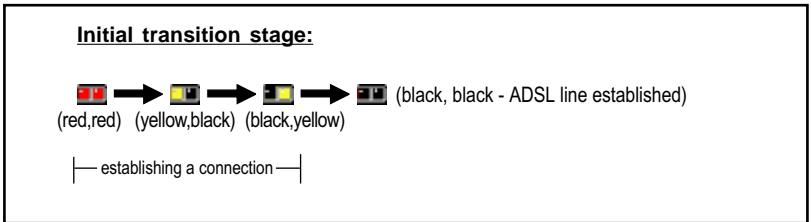
Verifying Your ADSL Modem

This chapter contains instructions to help you check whether the driver for your modem has been installed properly, as well as to check the status of your ADSL line.

Make sure that you have carry out your connections and driver installation as described in [Chapter 3](#) and [4](#).



You should see a **MAPI Icon**¹ displayed at your Windows system tray. This implies that your modem driver has been installed successfully. The following illustrates the initial transition stage of the **MAPI Icon**.



If you see a '**strike-off** MAPI icon'¹ , it means that you did not install the modem driver properly. Please re-install your driver as described in [Chapter 4 - Installing Your ADSL Network Modem Driver](#).

1 A **MAPI Icon** is displayed at your Windows system tray when your modem driver is installed successfully. This icon allows you to monitor your ADSL line connection, configure your VPI/VCI values, run diagnostics test and so on. The different MAPI LEDs light indicates different connection states. For details, please refer to [Appendix A - ADSL MAPI Icon](#).

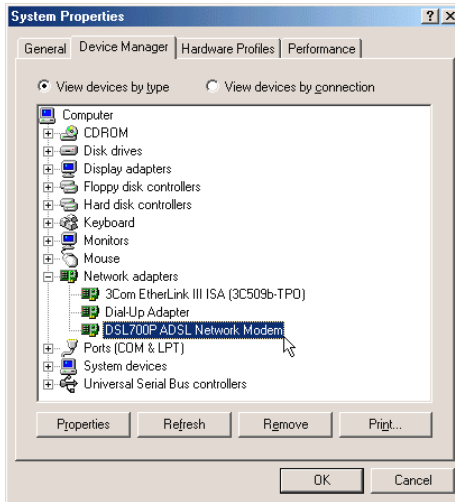
5. Verifying Your ADSL Modem

2

Alternatively, you may check your **Device Manager** for the listing of **DSL700P ADSL Network Modem**.

For Windows® 98 / Windows® 98 Second Edition / Windows® Me

- a) From your Windows desktop, right-click on **My Computer**. Select **Properties**.
- b) Select **Device Manager** tab. Double-click on **Network adapters**.



You should see **DSL700P ADSL Network Modem** listed as shown.

*If the modem device is not listed, re-install your modem driver as described in **Chapter 4 - Installing Your ADSL Modem Driver**.*

*If the modem device is listed, but with an exclamation mark on it, select the device and click **Remove**. Re-install your driver as described in **Chapter 4 - Installing Your ADSL Modem Driver**.*

You may now proceed with the following chapter to launch your browser.

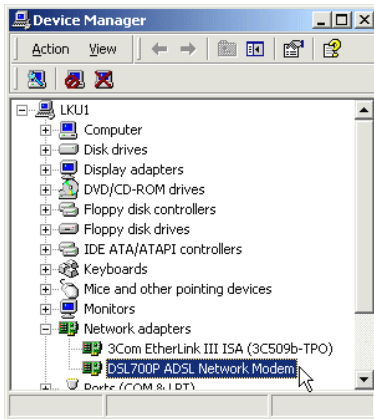
For Windows® XP / Windows® 2000

- a) **Windows® XP:** From your Windows desktop, click **Start**. Right-click on **My Computer** and select **Properties**.

Windows® 2000: From your Windows desktop, right-click on **My Computer** and select **Properties**.

- b) Click **Hardware** tab. Select **Device Manager** button.
- c) Double-click on **Network adapters**.

You should see **DSL700P ADSL Network Modem** listed as shown.



If the modem device is not listed, re-install your modem driver as described in [Chapter 4 - Installing Your ADSL Modem Driver](#).


*If the modem device is listed, but with an exclamation mark on it, right-click on the device and click **Remove**. Re-install your driver as described in [Chapter 4 - Installing Your ADSL Modem Driver](#).*

You may now proceed with the following chapter to launch your browser.

Chapter 6


Ready to Go!

6.1 Connection Ready

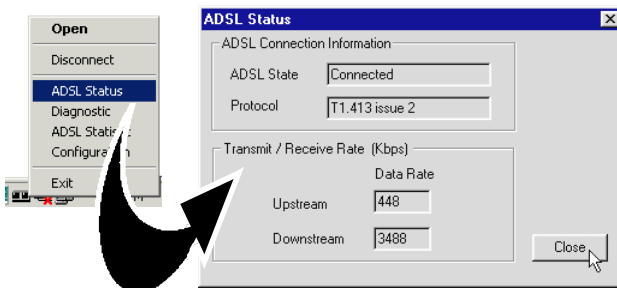
You are now connected to the Internet. (You should see the **MAPI Icon** displaying **2 black LEDs**  as described in **Chapter 5**.)

Launch your Internet Browser (**Internet Explorer** / **Netscape Navigator** / **Netscape Communicator** and so on) and start surfing!

6.2 Checking Your ADSL Line Status

To check the ADSL connection status, at the corner of your Windows taskbar, right-click on the **MAPI Icon** 

Select **ADSL Status**. The **ADSL State** will indicate **Connected** if you are still connected to the ADSL.



(The figures shown are examples. Your transmission rates may not be as shown.)



Uninstalling Your ADSL Modem Driver

This chapter contains information on how to uninstall your modem driver in Windows® 98, Windows® 98 Second Edition, Windows® Me, Windows® XP and Windows® 2000.



Ensure that your ADSL Modem Card is in your computer (in the PCI-Bus Slot) before you proceed with the following uninstallation process.

1

From your Windows taskbar, click **Start** > **Programs** > **DSL700P** > **Uninstallation**.

2

Follow the on-screen instructions to complete the uninstallation process. Restart the system when prompted.

(For Windows® 2000 and Windows® XP, system restart is not required. Uninstallation completes when you see the MAPI Icon removed from the system tray)

However, if you are re-installing DSL700P modem driver, you need to restart your system before doing so.)



ADSL MAPI Icon

This chapter explains the functions on the MAPI Icon.

The MAPI Icon allows you to monitor your ADSL connection, ATM/ADSL states, configure the PVC values and run a few diagnostics tests.

Upon successful driver installation, the **MAPI Icon**  will be displayed at the your Windows system tray.

A-1 MAPI LEDs

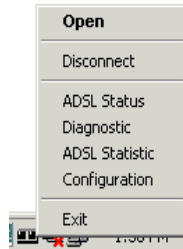
The **left LED** indicates **information being transmitted** and the **right LED** indicates **information being received**. The following table summaries the LED activities.

LED	Description
Red, Red	No ADSL connection
Black, Yellow is flashing or Yellow, Black is flashing	Establishing ADSL connection
Black, Black	ADSL Connection established - no data traffic
Green, Green	ADSL Connection established - modem is transmitting and receiving data
Green, Black	ADSL Connection established - modem is transmitting data
Black, Green	ADSL Connection established - modem is receiving data
∅	Modem is disconnected, or a problem exists



A-2 MAPI Menu

Right-click the **MAPI Icon** . The **MAPI Menu** will be displayed. A-2-1 to A-2-5 will describe each of the option.



A-2-1 Connect/Disconnect

(with reference to A-2. MAPI Menu)

This option allows you to **connect or disconnect** from the Telephone Exchange.

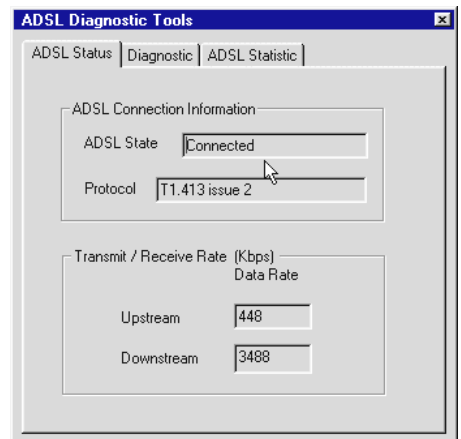
For advanced users (A-2-2 to A-2-5)

A-2-2 ADSL Status

(with reference to A-2. MAPI Menu)

This dialog box allows you to **monitor the ADSL connection** as well as the **transmit and receive line rates**.

- **ADSL State** displays the current status of the modem.
- **Protocol** displays which ADSL standard is being used.
- **Transmit/Receive Rate** shows the line rate for both the upstream and downstream.



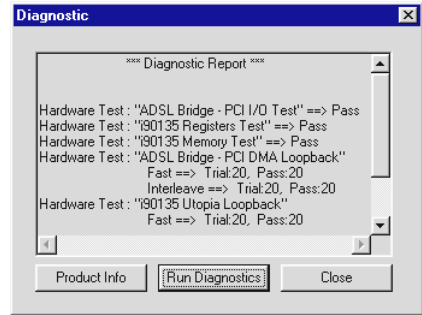
A-2-3 Diagnostic

(with reference to A-2. MAPI Menu)

This option allows you to **view the product information** and to **perform hardware test** on the ADSL card (e.g. ADSL Bridge test and Registers test).

Product Info lists the versions of the MAPI Icon and the protocol driver installed. The DLL version describes the software being used by both the drivers and MAPI Icon.

Run Diagnostics performs a brief hardware check and display the hardware status. *(Close all Dial-up sessions before running the diagnostic test.)*

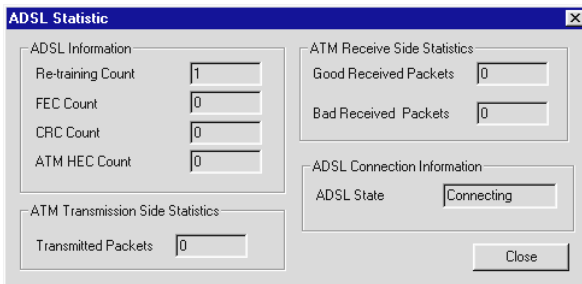


This information is useful whenever making a technical support call.

A-2-4 ATM/ADSL Statistic

(with reference to A-2. MAPI Menu)

This dialog box keeps tabs on **errors** that might affect overall system performance. The counts are reset whenever the PC system is restarted.



- **Re-training Count** tracks the *number of ADSL connections performed*. Due to unexpected line condition changes, the driver can retrain the connection causing the Re-training Count to increase.

ADSL implements Reed Solomon (RS) error checking:

- **FEC Count** tracks the *forward error correction count*.
- **CRC Count** tracks the *accuracy of correcting data errors over each 17msec*.
- **ATM HEC Count** (header error check) errors are recorded as an *indication of ATM packet accuracy*.

As a measure of packet transfer performance, the Packet Errors are counted and tracked against the total number of **Packets Received**. An error rate of less than 0.1% is reasonable under clean ADSL line conditions.

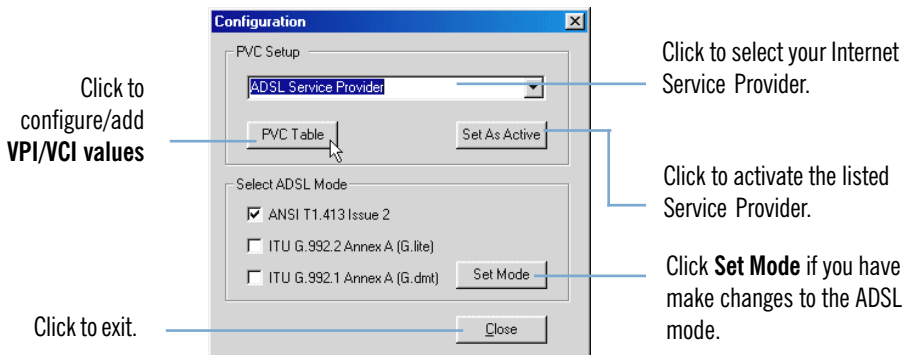
If you have received *Bad Received Packets* and are concerned about your service, multiply the Bad Received Packets count by *1000* and compare the result with the *total Packets Received* count. If the number is *smaller* than the total *Packets Received* count, then the board is operating normally.

- **ATM Transmission Side Statistics** displays the *number of packets transmitted*.
- **ATM Receive Side Statistics** displays the *number of good and bad packets received*.

A-2-5 Configuration

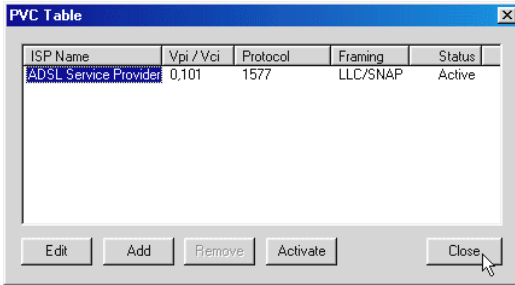
(with reference to A-2. MAPI Menu)

This option allows you to check or change the ADSL network modem **PVC values**.



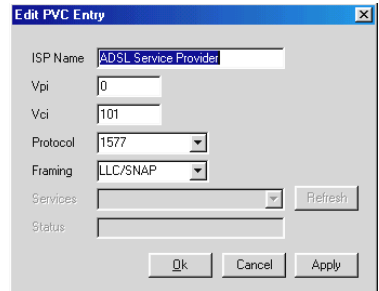
A. ADSL MAPI Icon

- To configure **VPI/VCI values** or add **multiple ISP names** or **multiple VPI/VCI values**, click **PVC Table**. The following window will be prompted.



- To **edit** any existing configuration(s), select the ISP and click **Edit**.

At the **Edit PVC Entry** prompt, overwrite the existing values with new values as given by your ADSL Service Provider and click **Apply**, followed by **OK**.



- To **add** a new configuration, at the **PVC Table** prompt, click **Add**. Enter your new ISP Name, VPI, VCI values and click **OK**.
- To **remove** an existing configuration, at the **PVC Table** prompt, click on the ISP Name and click **Remove**.
- You may **activate** any of your configurations by selecting the ISP Name and click **Activate**.

Appendix

B

Technical Specifications

This chapter contains the technical specifications of your card. The information may be more useful for technically inclined users.

B-1 Drivers Support

- Windows® 98
- Windows® 98 Second Edition
- Windows® Me
- Windows® XP
- Windows® 2000

B-2 Features

- 32-bit Controllerless ADSL PCI Modem
- UTOPIA Specifications Level I and Level II compliant
- ANSI T1.413 issue 2, ITU-T G.992.1 (G.dmt) and G.992.2 (G.lite) compliant
- Using Discrete Multi-Tone (DMT) line encoding scheme
- Full rate transmission at up to 8 Mbps downstream and 640 Kbps upstream
- G.lite transmission at up to 1.5 Mbps downstream and 512 Kbps upstream
- Rate Adaptive modem at 32 Kbps steps
- Up to 18,000 ft loop reach
- PCI 2.1 Power Management specification compliant
- Software upgradable for future feature enhancement
- Full RFC1483/RFC1577/ RFC2364 protocol stack support
- Spectral compatibility with POTS

B-3 ADSL Chipset

Using ITEX Apollo2 Chipset:

- I90188 ADSL PCI/UTOPIA Interface
- I90135 ADSL DMT Modem and ATM Framer
- I90134 ADSL Analog Front End
- NDIS 5.0 miniport driver

B-3-1 I90188 ADSL PCI/Utopia Interface

- PCI 32-bit Bus Master Interface compliant to PCI Specification v2.2
- UTOPIA Level I v1.0 and Level II v2.01 support for D0 and D3 hot
- I90135 Configuration Register Interface
- ANSI T1.413 issue 2, ITU-T G.992.1 (G.dmt) and G.992.2 (G.lite) compliant
- AC'97 Digital Controller compliant to AC'97 Specification 2.1
- +3.3-volt & +5-volt supplies, 1.60-pin PQFP

B-3-2 I90135 ADSL DMT Modem & ATM Framer

- ANSI T1.413 Issue 2 standard DMT modem with embedded ATM Framer
- Standard Utopia Level I and Level II ATM Interfaces
- DMT Modulation up to maximum of 256 tones (14 bits)
- ADSL/ATM cell-specific Framing and Deframing
- Generic ATM TC Layer functions
- ATM Specific TC Layer functions
- Rotor and Frequency Domain Gain Correction and Equalization
- Performs DMT Modulation, Demodulation, Reed-Solomon Encoding, Bit Interleaving, and 4D Trellis Coding
- 3.3-volt, 144-pin PQFP

B-3-3 190134 ADSL Analog Front-End

- Integrated Analog Front End (AFE) for ADSL
- High sampling rate at 8.832 MHz for both ADC and DACs
- Two (2) 12-bit DACs, One 13-bit ADC
- Differential Analog Input/Output
- Accurate continuous-time low pass filters for channel filtering
- 3.3-volt, 64-pin LQFP

B-4 ADSL Software Support

- ATM Layer with Traffic shaping
- AAL ATM Attributes - AAL5 & SAR
- RFC-2364 PPP over ATM PVCs
- RFC-1483 Routed IP over ATM PVCs
- RFC-1577 Classical IP over ATM PVCs
- UNI 3.0, 3.1 and UNI 4.0 ATM Signalling

B-5 Interfaces

B-5-1 External connectors

- 2 x RJ-11 Telephone socket for telephone line & handset



The specifications herein are subject to change without prior notification.



Frequently Asked Questions

This chapter provides the answers to some of the commonly asked questions on your modem.



What is ADSL ?



ADSL, Asymmetric Digital Subscriber Line is a broadband communication technology designed for use on regular phone lines. It has the ability to move data over the phone lines at speeds up to 140 times faster than the analog modem available today.



Why is it called Asymmetric ?



It is called asymmetric because more bandwidth is reserved for receiving data than for sending data. This is useful because many users of the Internet receive much more data than they send.



What are the benefits of ADSL over analog modems ?



Besides the high-speed advantage, ADSL connection is always on. There is no longer a need to log on and off, no more busy signals and no more waiting for the connection to established - it is always there. On top of these, you can use the phone even when the data connection is on. You do not need to switch between surfing the Net and talking over the phone.





Will my modem constantly connect near the maximum speed ?



At ADSL speeds, the limitations are much more of the performance of the Internet server you are trying to reach and the amount of traffic on the Internet.



Can I connect to the “SingTel Magix Service” everywhere I go?



No, you cannot. You can connect to this service, only via ADSL phone line enabled for the SingTel Magix Service provided by your ADSL Service Provider.



Can I run both dial-up modem and ADSL modem?



Yes, but it is not recommended. You may experience slowness during surfing as well as incurring additional cost of maintaining two active connections.



Do I need to use Micro-Filter when using ADSL?



Yes, if you are sharing your DSL line with your telephone. The Micro-Filter would eliminate noise on the telephone line to ensure the best possible networked phone performance. All telephone line extensions using the same telephone number will need to attach to a Micro-Filter. If the DSL uses a different line and not sharing with your telephone, then a Micro-Filter wouldn't be necessary.



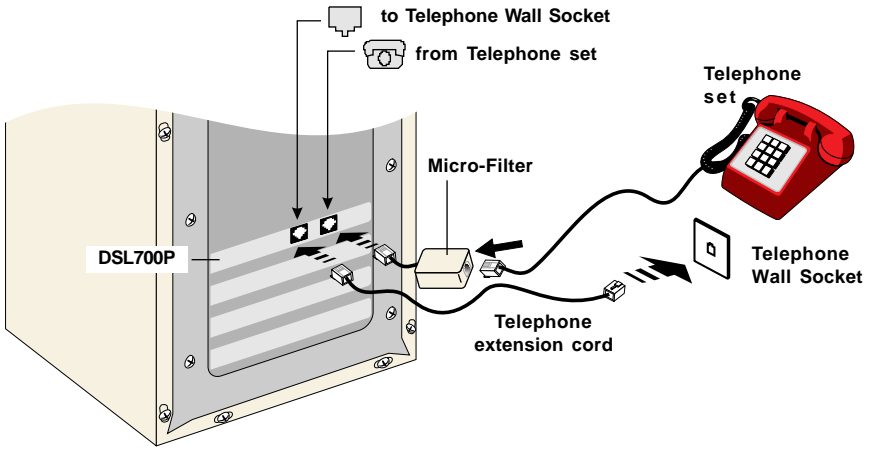
How do I most efficiently connect Micro-Filters to my telephone network ?



Please refer to the diagram on the following page.

Generally, you should abide to the following rules:

1. There must not be any Micro-Filters between your ADSL modem card and your Telephone Wall socket.
2. Micro-Filters are not required if you are not connecting to your Telephone sets.
3. Restrict the number of Micro-Filters to a maximum of 4.



C-1. Connecting Micro-Filter to your Telephone

Troubleshooting Guide

You may encounter some problems while installing or using your modem. This chapter highlights some of the more common issues concerning your modem and their possible solutions.



My system does not detect the ADSL Modem when I boot up for the first time.



Make sure your ADSL Modem card is fully inserted into the PCI-Bus slot. If your system is still not able to detect the modem, your PCI-Bus slot may be faulty. Locate another available PCI-Bus slot and try again.



The **MAPI Icon on the taskbar retrains (with blinking yellow LEDs) every time I use the phone while surfing on the Internet.**



Make sure that you have connected the Micro-Filter as described in [section 3.2 - Connecting Your ADSL Modem](#).



I accidentally exited from my **MAPI Icon. How do I called out the icon again ?**



From your Windows taskbar, click **Start** > **Programs** > **DSL700P** > **ADSL Diagnostics Tools**.



My ADSL Modem fails to establish an ADSL connection (MAPI LEDs keeps blinking).



Try one of the following suggestions:

1. Right-click on the **MAPI Icon** and select **Disconnect**, followed by **Connect** again.
2. Try restarting your PC system.

If the condition changes with the time of the day, there could be a possible problem with the line.

Appliances near your PC may also be introducing noise to your ADSL service. Minimise appliances around your PC.



I cannot install the modem driver successfully in Windows® 2000.



1. Right-click **My Computer** and select **Properties**
2. Click the **Hardware** tab and click on **Device Manager...** button.
3. Double-click on the **Network Adapters** device.
If you see the device **DSL700P ADSL Network Modem** with an exclamation mark, please refer to *Chapter 5 - Verifying Your ADSL Modem* on how to re-install your modem driver.
If you see the device **Network Controller** with an exclamation sign, please carry out the following steps to re-install your modem driver.
4. Double-click on the **Network Controller** device.
5. Click **Reinstall Driver...** .
6. The **Upgrade Device Driver Wizard** window will be prompted. Click **Next** to proceed.
7. Click **Next** again on the next window.
8. On **Locate Driver Files** section, **unselect** all options except **Specify a location**.
9. Click **Browse** and navigate to the CD-ROM drive. Ensure that the DSL700P Installation CD is already loaded.
10. Double-click on **3_Win2K** folder and click **Open**.
11. Click **OK**.
12. Click **Next** to proceed with the installation.
13. At a **Digital Signature Not Found** prompt, click **Yes** to proceed.
14. Click **Finish** to complete the installation.




I am not able to remove the modem driver from my system (the MAPI Icon is still at my taskbar). (For Windows 2000 and Windows XP only)



This can happen if you have removed the modem card from your system **before** removing the modem driver.

Please carry out the following remedies to remove the modem driver.

1. Insert the modem card back to your PCI-Bus slot. It should be the same PCI-Bus slot that you have previously inserted for your modem card.
(If you see the MAPI icon being 'strike-off'  and your system starts to re-detect for your ADSL Modem, it means that you did not insert your modem card back to correct PCI-Bus slot. At the prompt to install the ADSL Modem driver, click **Cancel**. Shut-down your system, plug out the modem card and insert the card to the correct PCI-Bus slot.)
2. Click **Start** > **Programs** > **DSL700P** > **Uninstallation** to remove the driver.



My MAPI LEDs shows 2 black LEDs (indicating ADSL line established), but I am still not able to surf the Internet.



Carry out the following steps to check the configurations for your Internet connection:

1. Right-click on the **MAPI Icon** and select **Configuration**.
2. From the dialog box prompted, click **PVC Table**.
3. Check your settings. Correct **Vpi/Vci**, **Protocol** and **Framing** values should be **0,101**, **1577** and **LLC/SNAP** respectively.
Click **Edit** to make changes if required. For details, you may refer to **Appendix A - ADSL MAPI Icon, section A.2.5**.

Another reason could be that you are not registered for the listed service. Subscribe to the service and try again.



There is no sound when video is being streamed.



Ensure that Master Volume Control under the desktop system tray (bottom right hand corner of your screen) is not set to "mute".



My ADSL connection disconnects when I run the Diagnostic program.



Running the Diagnostic program will disconnect your Modem from the ADSL Line. To re-activate the ADSL Line, right-click the **MAPI Icon** and select **Connect**.

Appendix E



Technical Support

E-1 Aztech Sales Enquiries

Hotline : (65) 6741 7211 (Marketing and Sales Department)
Email : sales@aztech.com
Fax : (65) 6749 1198
Working Hours : Monday to Friday - 0900 to 1700
Saturday/Sunday/Public Holidays - Closed

E-2 Aztech Technical Support

Hotline : (65) 6741 7211
Email : support@aztech.com
Fax : (65) 6749 1198
Working Hours : Monday to Friday - 0900 to 1700
Saturday/Sunday/Public Holidays - Closed

E-3 Technical Support Considerations

Majority of enquiries can be resolved efficiently. However, there may be cases when it is beyond our technical support to assist you. We may not be able to assist you in:

- **Hardware conflicts**

We will try to discover them and make suggestions but we are unable to repair them over the telephone.

- **Software conflicts**

Removal of other software and reinstalling our software may be the only solution.

- **O/S problem**

If you encounter problems like fatal exception or illegal operation, kindly refer to your PC vendor.

- **Modifications made to your software**

Our technical support officers are trained to support the software we provide as part of our service and they are knowledgeable about a wide range of other programs. However, we are unable to support software that has been modified.

