

ADSL PCI Modem

Easy Start (Read Me First)

Version 1.0

Protocols Discussed:

RFC 1483
RFC 1577
RFC 2364

Contents

About this Easy Start...2
Package...2
Installation Notes...2
Safety Precaution...3
Step 1: Installing Your ADSL PCI Modem...3
Step 2: Connecting Your ADSL PCI Modem...4
Step 3: Installing Your ADSL PCI Modem Driver...5
Step 4: Verifying Your ADSL PCI Modem...14
Step 5: Configuring Protocol Properties
(for RFC1577 users)...16
Step 6: Setting VPI/PCI Values ...18
Monitoring Your ADSL Connection...19
Uninstalling Your ADSL PCI Modem...20

Product warranty does not apply to damage caused by lightning, power surges or wrong voltage usage.

About this Easy Start

This booklet contains information on setting up your ADSL PCI Modem. It touches on the key installation procedures to help you setup your modem.



Please read the **ReadMe.txt** file on the Installation CD for any new updates on the product.

Package

Ensure that you have the following items in your ADSL package. For any missing items, please contact your dealer immediately.

- ✓ 1 ADSL PCI Modem Card
- ✓ 1 Telephone cable (RJ-11) *(optional)*
- ✓ 1 Micro-Filter *(optional)*
- ✓ 1 ADSL PCI Modem Easy Start

Installation Notes

- The graphics and screens illustrations shown in this easy start may differ from what you see from your system, but the steps still apply.
- A Philips Screwdriver is required for the card installation.
- The documentation for your computer should come in handy during the card installation. Have it ready by your side.
- It is recommended that any existing modem card be removed before installing your new modem card.

Safety Precaution

- Do not remove your card from its protective bag until you are ready to install it.
- Always try to hold your card by its edges. Avoid touching any electronic components on your card.
- Static electricity can cause permanent damage to your card. To prevent such a damage, touch any non-painted surface of the computer's chassis before you begin installation, and again every minute or so until the installation is completed.
- This product is for use only in UL Listed computers
- To reduce the risk of fire, use only No. 26 AWG or larger telecommunication line cord.

Step 1: Installing Your ADSL PCI Modem

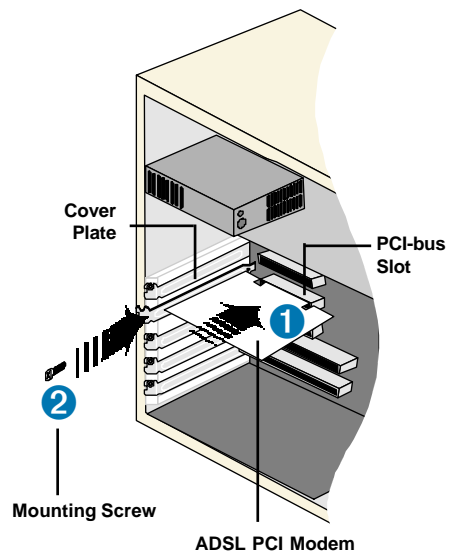


Power off your computer and any connected devices before connecting your modem!

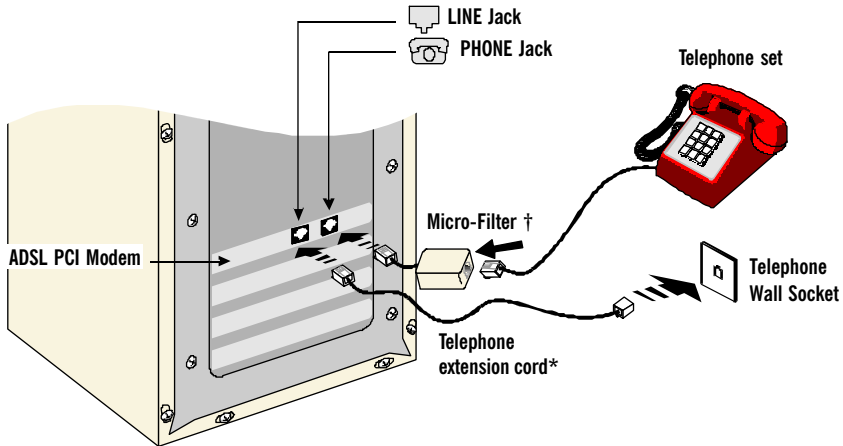
After removing the cover of your computer, locate any available PCI-Bus slot and remove its cover plate. Save all the screws removed.

- 1 Insert your card firmly into the selected PCI-Bus slot.
- 2 Secure the card with the mounting screw.

Replace the cover of your computer and secure all the screws back in place.



Step 2: Connecting Your ADSL PCI Modem



Carry out the connections as illustrated above.



1. The connection to the **Telephone Set** is **optional**. The **Phone Jack** provides convenience to users who need to use the Telephone when accessing the computer.
2. A **Micro Filter** (can be purchased separately from your dealer) is required between the **Phone Jack** on the modem card and the **Telephone Set**.

† The use of Micro-Filter eliminates noise on the telephone line and ensure best possible networked phone performance. If your house has more than one telephone sets all sharing the same ADSL line, than each of the telephone sets will have to be connected to a Micro-Filter. (Connect the Micro-Filter between your Telephone Set and the telephone wall socket)

If your ADSL uses a different line and not sharing with your telephone, then a Micro-Filter will not be necessary.

* CAUTION ! - To reduce the risk of fire, use only No. 26 AWG or larger telecommunication line cord.

Step 3: Installing Your ADSL PCI Modem Driver



1. The screen shots, screens information and steps illustrated in this booklet serve only as a guide. The exact information and steps you see on your system may vary, depending on your system configurations. For any dissimilarities, follow closely to the instructions as prompted on your PC screen.
2. Depending on your system configurations, you may be prompted for your **Windows CD-ROM** during installation. Have it ready by your side.

This section contains the installation procedures for the following protocols. You need to install only one of them, as determined by your Internet Service Provider (ISP).

- RFC 1483
- RFC 1577
- RFC 2364

The following screen shots shows RFC 2364 protocol being used, unless otherwise stated.

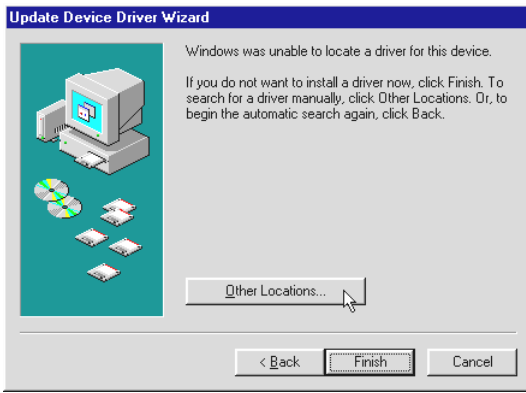
3.1 For Windows® 95 users

- i) Power on your computer to start Windows. It will detect your newly-installed modem and prompt for its driver.



Place the **Installation CD** into your CD-ROM drive and click **Next**.

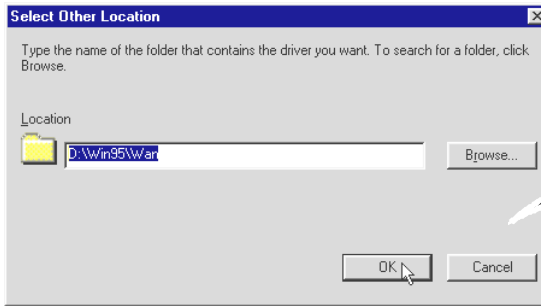
- ii) Click **Other Locations...** to specify the driver location.



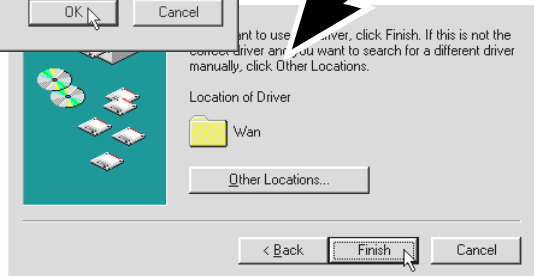
- iii) For **RFC 1483 or 1577 users**, click **Browse** and navigate to the '\Win95\Lan' folder on your CD-ROM.

For **RFC 2364 users**, click **Browse** and navigate to the '\Win95\Wan' folder on your CD-ROM.

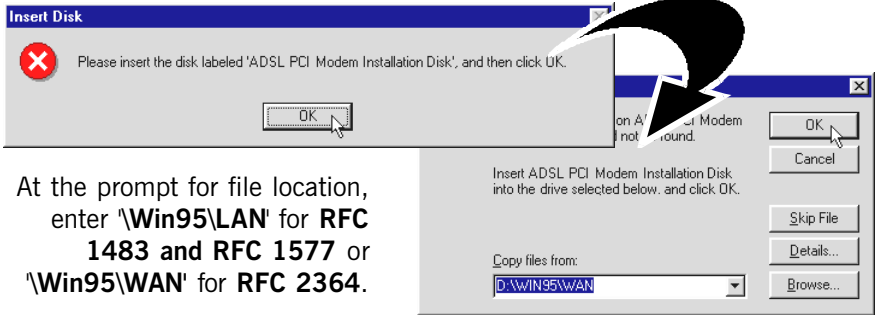
Click **OK**.



- iv) Click **Finish** for the driver installation to progress.



- v) At the following prompt, ensure that your **Installation CD** is in your CD-ROM drive and click **OK**.

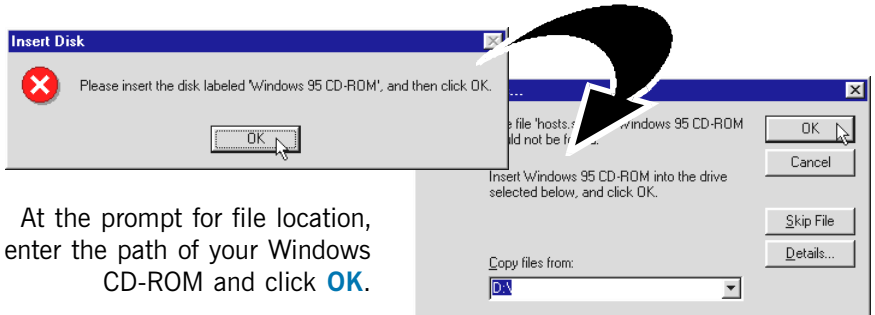


At the prompt for file location, enter **\Win95\LAN'** for **RFC 1483** and **RFC 1577** or **\Win95\WAN'** for **RFC 2364**.

Click **OK**.

- vi) Depending on your system configurations, you may be prompted for your Windows CD-ROM for some missing files.

Replace your **Installation CD** with **Windows CD-ROM** on your CD-ROM Drive and click **OK**.



At the prompt for file location, enter the path of your Windows CD-ROM and click **OK**.

- vii) If there is a **Version Conflict** prompt, it is recommended that you keep your existing file. Click **Yes**.
- viii) At the prompt for restart, click **Yes**.

You may now proceed with **Step 4** to verify if your modem has been installed successfully.

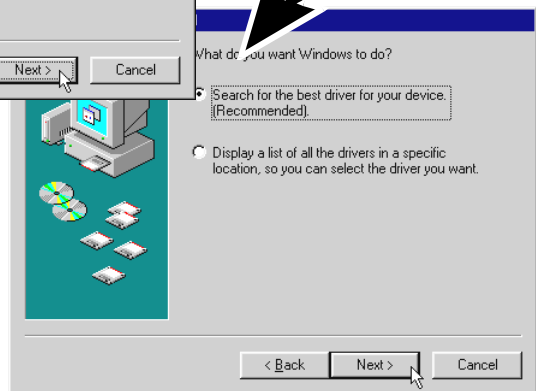
3.2 For Windows® 98 / 98 Second Edition(SE) users

- i) Power on your computer to start Windows. It will detect your newly-installed modem and prompt for its driver.



Place the **Installation CD** into your CD-ROM drive and click **Next**.

- ii) Click the option **Search for the best driver for your device. (Recommended)**, and click **Next**.



- iii) Select **Specify a location** and click **Browse...** .
For RFC1483 and 1577 users, navigate to 'W2k98Me\Lan' directory on your **Installation CD**.
For RFC2364 users, navigate to 'W2k98Me\Wan' directory on your **Installation CD**.
 Click **Next**.

- iv) Click **Next** again to proceed installation with the driver found.



The driver name (.inf) illustrated may be different from what you see on your system. This is due to a different driver version being used during screens capturing. What you see on your system is a more updated driver version.



- v) Click **Finish** to complete the driver installation.
- vi) Depending on your system configurations, you may be prompted for your Windows CD-ROM for some missing files.

Replace your **Installation CD** with **Windows CD-ROM** on your CD-ROM Drive and click **OK**.

- vii) At the prompt for restart, click **Yes**.

You may now proceed with **Step 4** to verify if your modem has been installed successfully.

3.3 For Windows® Me users

- i) Power on your computer to start Windows. It will detect your newly-installed modem and prompt for its driver.



Select **Specify the location of the driver (Advanced)** option.

Place the **Installation CD** into your CD-ROM drive and click **Next**.

- ii) Click **Specify a location**.

For **RFC 1483 and 1577 users**, click **Browse** and navigate to '\W2k98Me\Lan' folder on your CD-ROM drive.

For **RFC 2364 users**, click **Browse** and navigate to '\W2k98Me\Wan' folder.

Click **Next**.



- iii) Windows will prompt that the driver has been found. Click **Next** to proceed installation with the driver found.



The driver name (.inf) illustrated may be different from what you see on your system. This is due to a different driver version being used during screens capturing. What you see on your system is a more updated driver version.

- iv) Click **Finish** to complete the driver installation.

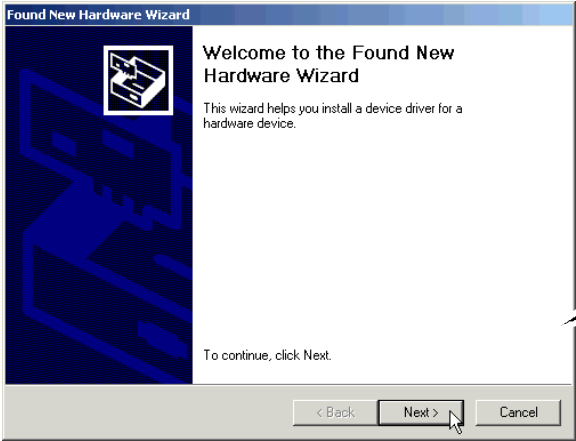


- v) At the prompt to restart, click **Yes**.

You may now proceed with **Step 4** to verify if your modem has been installed successfully.

3.4 For Windows® 2000 users

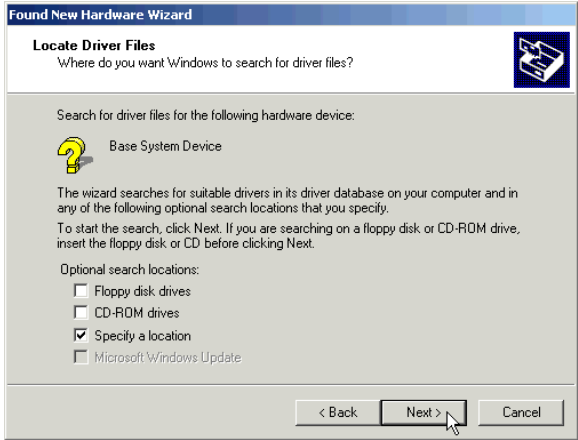
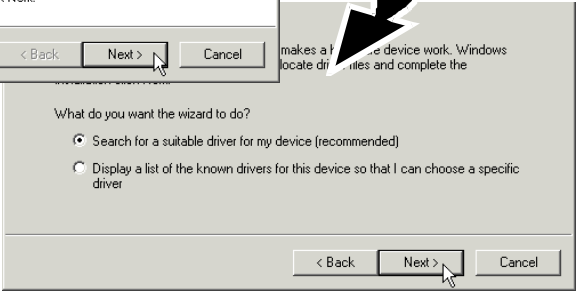
- i) Power on your computer to start Windows. It will detect your newly-installed modem and prompt for its driver.



Place the **Installation CD** into your CD-ROM drive and click **Next**.



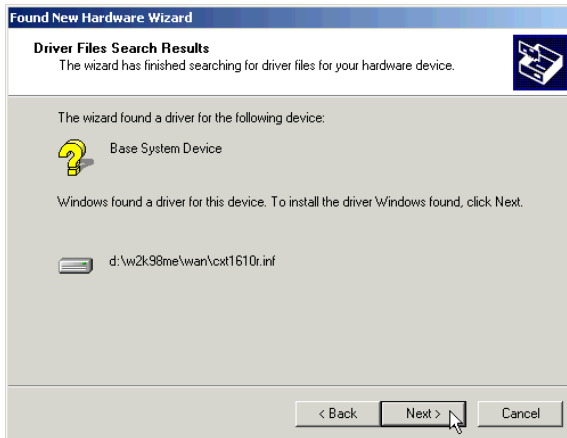
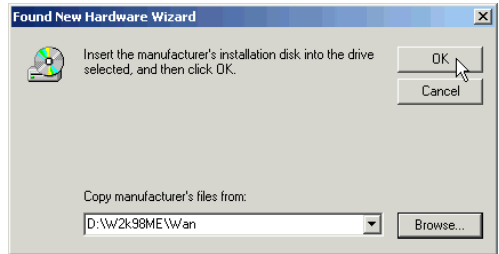
- ii) Select **Search for a suitable driver for my device (recommended)** and click **Next**.



- iii) Select **Specify a location** and click **Next**.

- iv) Click **Browse** and navigate to '**W2k98Me\Lan**' directory (for **RFC 1483** and **RFC 1577**) or '**W2k98Me\Wan**' directory (for **RFC 2364**) on the **Installation CD**.

Click **OK**.



- v) Windows will prompt that a driver has been found.

Click **Next** to proceed installation with the driver found.

If prompted for the Installation CD, click **OK**.

- vi) A **Digital Signature Not Found** Window may appear. This occurs when Windows detected a newer version of your driver. Click **Yes** to proceed.



- vii) Click **Finish** to complete the installation.

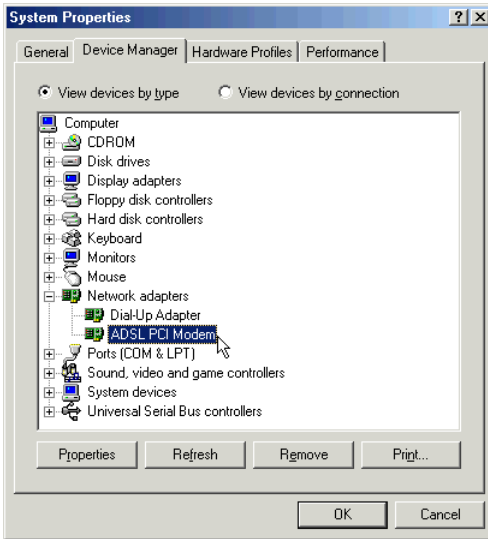
(If prompted with **Digital Signature Not Found** Window again, click **Yes**.)

You may now proceed with **Step 4** to verify if your modem has been installed successfully.

Step 4: Verifying Your ADSL PCI Modem

4.1 For Windows® Me / 98 / 95 users

- i) From your Windows desktop, right-click on **My Computer** and select **Properties**.
- ii) Click on the **Device Manager** tab.



You should see **ADSL PCI Modem** listed.

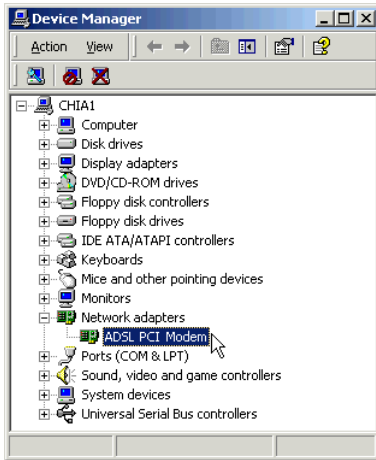
If the driver was not installed properly, a yellow exclamation mark will appear beside the installed device. In this case, uninstall the driver (select the device and click **Remove**) and reinstall again.

- iii) **For RFC 1577 users**, please proceed with **Step 5** to configure the properties of your protocol.

For RFC 1483 and 2364 users, please proceed with **Step 6** to configure the properties of your protocol.

4.2 For Windows® 2000 users

- i) From your Windows desktop, right-click on **My Computer** and select **Properties**.
- ii) Click on the **Hardware** tab and then **Device Manager...**



You should see **ADSL PCI Modem** listed.

If the driver was not installed properly, a yellow exclamation mark will appear beside the installed device. In this case, uninstall the driver (select the device and click **Remove**) and reinstall again.

- iii) **For RFC 1577 users**, please proceed with **Step 5** to configure the properties of your protocol.

For RFC 1483 and 2364 users, please proceed with **Step 6** to configure the properties of your protocol.

Step 5: Configuring Protocol Properties (for RFC1577 users)



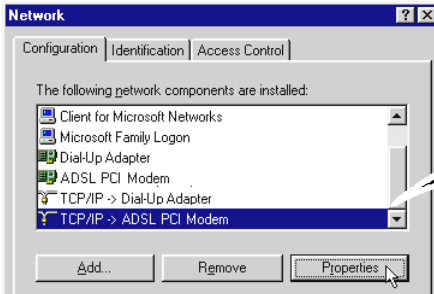
- i) From your Control Panel, locate **ADSL PCI Modem** icon and double-click on it. From the window prompted, press <Alt><P>. The following dialog box will be prompted. Click the **Protocol Setup** tab.

From the **Encapsulation Mode** drop-down field, click and select **Classical IP over ATM (RFC1577)**. Click **Apply** followed by **OK**.

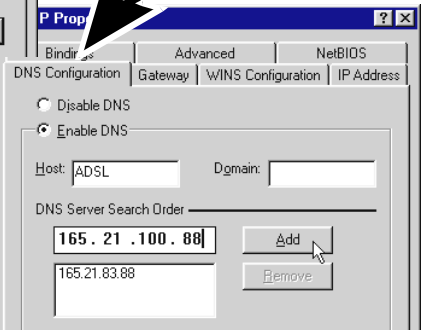


Restart your system for changes to take effect!

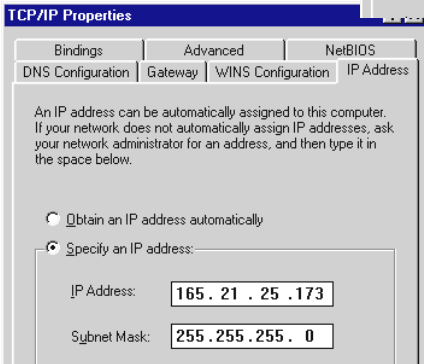
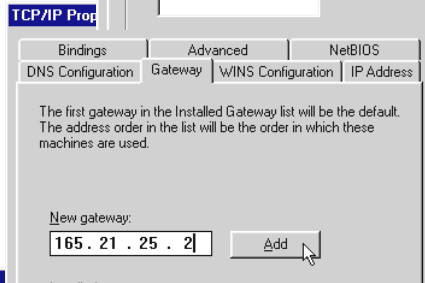
- ii) Upon system restart, right-click on the **Network Neighborhood** icon and select **Properties**.
- iii) Locate **TCP/IP -> ADSL PCI Modem** and click **Properties**.



- iv) Select the **DNS Configuration** tab.
Enter the **Host** and **DNS Server Search Order** values given by your ISP and click **Add**.



- v) Select the **Gateway** tab.
Enter the **New Gateway** value given by your ISP and click **Add**.



- vi) Select the **IP Address** tab.
Enter the **IP Address** and **Subnet Mask** given by your ISP and click **OK**.
Click **OK** again.
- vii) At the prompt for restart, click **Yes**.
Please proceed with **Step 6** to set your VPI/VCI values.

Step 6: Setting VPI/PCI Values



From your Control Panel, locate **ADSL PCI Modem** icon and double-click on it. From the window prompted, press <Alt><P>. The following dialog box will be prompted. Click the **Protocol Setup** tab.

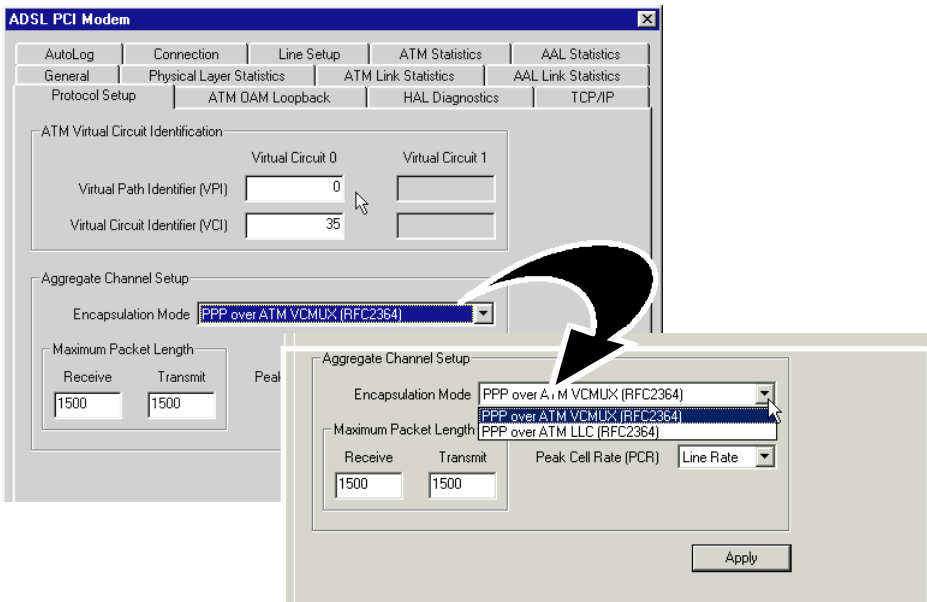
To change VPI/VCI values:

At the **Virtual Circuit 0** field, enter the VPI and VCI values given by your ISP. Click **Apply** and **OK**.

To change Encapsulation mode (for RFC 1483 and RFC 2364 only):


From the **Encapsulation Mode** drop-down field, click and select the appropriate option as given by your ISP. Click **Apply** followed by **OK**.

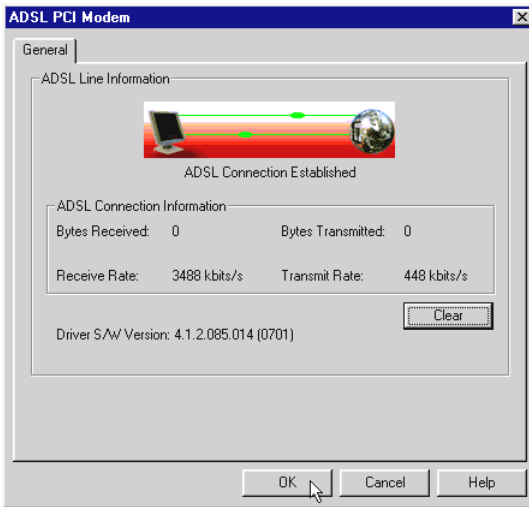
You may proceed with the next section to monitor your ADSL Connection.



Restart your system for changes to take effect!

Monitoring Your ADSL Connection


From your Control Panel, locate **ADSL PCI Modem**  icon and double-click on it. The following window will be prompted.

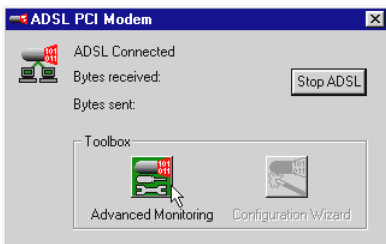


The **ADSL Line Information** indicates the status of your ADSL line connection.

Once the ADSL Line is established, the connection information will be displayed at the **ADSL Connection Information** field.

Click **OK** to close.

Alternatively, you may double-click the **ADSL PCI Modem icon**  on your Windows system tray. The following window will be prompted.



Your **ADSL Line status** and **Bytes received/sent** are also indicated.

To reveal the **Toolbox** (as shown on your left), press <Alt><A>.

Select **Advanced Monitoring** for **receive and transmit rates** as shown on the window above.

Uninstalling Your ADSL PCI Modem in Windows® Me / 98 / 98SE / 95 / 2000

- i) From your Windows taskbar, click **Start** > **Settings** > **Control Panel**. Double-click the **Add/Remove Programs** icon.
- ii) At the **Add/Remove Programs Properties** Window, from the **Install/Uninstall** tab, select **ADSL PCI Modem** and click **Add/Remove...** .
- iii) Follow closely to the instructions prompted to start the uninstallation.
- iv) Restart your system.

- Windows® 95 / 98 / 98Second Edition / Me and Windows® 2000 are registered trademarks of Microsoft Corp.
- All other company or product names are trademarks or registered trademarks or service marks of their respective owners.