

ADSL USB Modem

Easy Start (Read Me First)

Version 1.0

Protocols discussed

RFC 1483
RFC 1577
RFC 2364
RFC 2516

Contents...

About this Easy Start	2
Safety Guidelines	2
Package	2
Minimum System Requirements	3
Front Indicators	3
Step 1: Installing Your ADSL USB Modem Driver	4
Step 2: Setting Up ADSL USB Modem	6
Step 3: Configuring the IP Settings (For RFC 1577 user only)	7
3.1 For Windows® XP	7
3.2 For Windows® Me / Windows® 98 Second Edition	8
3.3 For Windows® 2000	10
Step 4: Dial-Up to the Internet (for RFC 2364 and RFC 2516 users)	11

Product warranty does not apply to damage caused by lightning, power surges or wrong voltage.

Safety Guidelines

- Keep the modem away from fluid, direct sunlight and excessive heat.
- During times of lightning strike/thunderstorm, do not use the modem.
- This product is for use only in UL Listed computers.
- To reduce the risk of fire, use only No. 26 AWG or larger telecommunication line cord.

About this Easy Start

This booklet contains information on setting up your ADSL USB Modem. It touches on the key installation procedures to help you setup your modem !

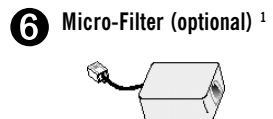
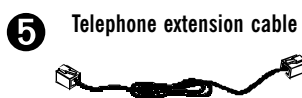
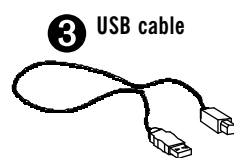
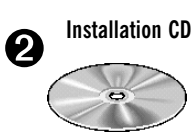
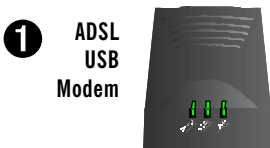


On commonly asked questions or for problems encountered during the setting up / running of your modem, please refer to the **Frequently Asked Questions & Troubleshooting Guide** located in the **Manuals** folder on your Installation CD.

Package

If you found any missing items, please contact your dealer immediately.

(The actual cables that are included with your package may differ in appearance from country to country)



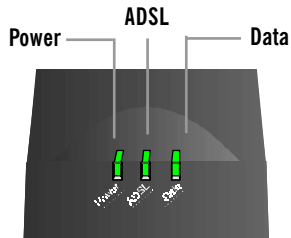
¹ Micro-Filter can be purchased separately from your dealer.

Minimum System Requirements

- IBM PC-based computer with Pentium® 233 processor
- 32MB RAM
- 20MB hard disk space (system files and modem driver only)
- A free USB Port
- CD-ROM drive
- Windows® 98 Second Edition / Windows® Me / Windows® XP / Windows® 2000

Front Indicators

The indicators show the status for the following:



- Power** : **Lights up** when power is supplied via the USB port from your PC
- ADSL** : **Lights up** when the ADSL line is established
- Data** : **Blinks** when the modem is transmitting/receiving data

Step 1: Installing Your ADSL USB Modem Driver

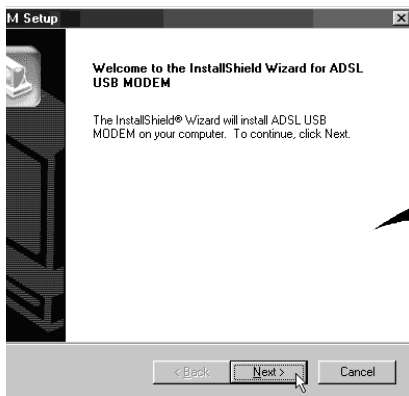


If you have connected the Modem to your PC **BEFORE** installing the driver, you will be prompted with the **New Hardware Wizard**.

Click **Cancel** at the prompt. Disconnect the USB cable from your Modem and proceed with the following installation first!

The following contains the driver installation instructions for the protocols **RFC 1483 (Bridging)**, **RFC 1577 (IPoA)**, **RFC 2364 (PPPoA)** and **RFC 2516 (PPPoE)**. You only need to install one of them, as determined by your ADSL Service Provider.

- i. Power on your computer. Place the Installation CD on your CD-ROM Drive.
- ii. From the Installation CD, go to the appropriate folder, either '**RFC1483**', '**RFC1577**', '**RFC2364**' or '**RFC2516**' (as determined by your ADSL Service Provider) and double-click the file **setup.exe**.
- iii. At the following screen, click **Next**.
- iv. Allow some time for Windows to copy the required files.





- v. At the following prompt, click **Finish** to restart your computer.



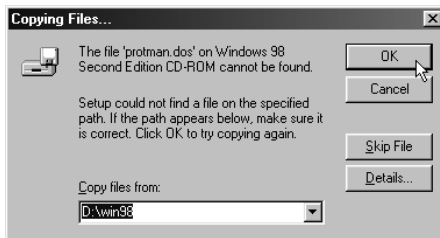
- vi. After system reboot, click **OK** at the **USB Warning**.



Connect one end of the **USB cable** () to the **USB Port** on the **Modem** and the other end () to the **USB port on your computer**.

(See the illustration at [Step 2](#)).

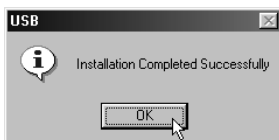
- vii. **For Windows® 98 Second Edition users**, you may be prompted for your **Windows CD-ROM**.



Replace the **Installation CD** on your CD-ROM drive with **Windows 98 Second Edition CD-ROM**.

In the text box, enter the path (example **D:\win98**) of your Windows CD-ROM and click **OK**.

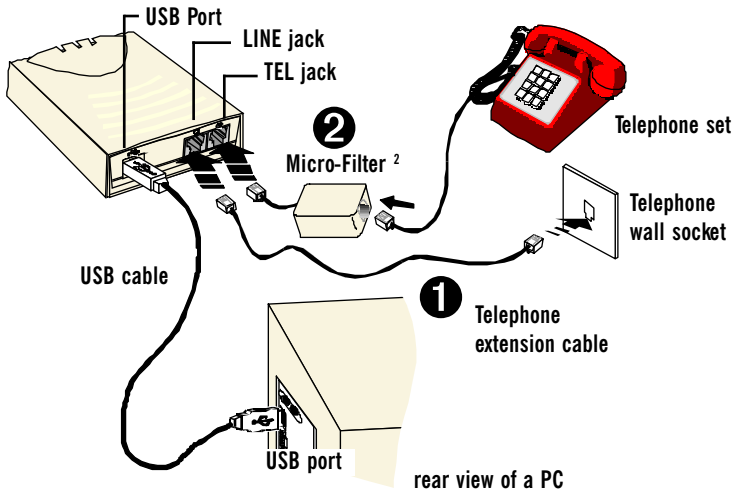
- viii. You will be prompted **Installation Completed Successfully**. Click **OK** and proceed with [Step 2](#) to setup your Modem.



Step 2: Setting Up ADSL USB Modem

With the "Hot Swap" feature in this modem, you can connect your modem to your computer without having to power off your system!

Carry out the connections as illustrated.



Your USB cable should be connected as illustrated above. Proceed with the rest of the connections as follow:

- 1** Connect one end of the **telephone extension cable** to the **Line Jack** on the **modem** and the other end to a **telephone wall socket**.
- 2** Connect a Micro-Filter² to the **TEL Jack** on the modem and then connect your **Telephone Set** to the Micro-Filter. (The connection to the telephone set is optional. The Micro-Filter is not required if you are not connecting to a Telephone Set).

For RFC 1483 users, this completes the setting up of your ADSL Modem. Please refer to your ADSL Service Provider to install a third-party utility for dial-up to the Internet.

For RFC 1577 users, please proceed to **Step 3**.

For RFC 2364 and 2516 users, please proceed to **Step 4**.

² For details on the usage of the Micro-Filter, please refer to the **Frequently Asked Question & Troubleshooting Guide, "Do I need to use a Micro-Filter when using ADSL ?"** on your Installation CD.

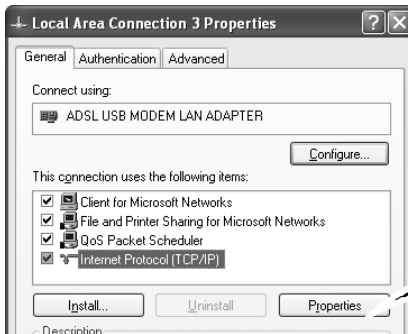
Step 3: Configuring the IP Settings (For RFC 1577 users only)

3.1 Configuring the IP Settings - For Windows® XP

(Instructions are based on default **Start menu** option)

- i. From your Windows taskbar, click **Start > More Programs > Accessories > Communications > Network Connections**.
- ii. From **Other Places**, click **My Network Places**. Right-click on the **LAN Area Connection** and select **Properties**.
- iii. Ensure that the field **Connect Using** indicates **ADSL USB MODEM LAN ADAPTER**.

(This verification is important as you may have more than one **Local Area Connection** icons installed in your system).

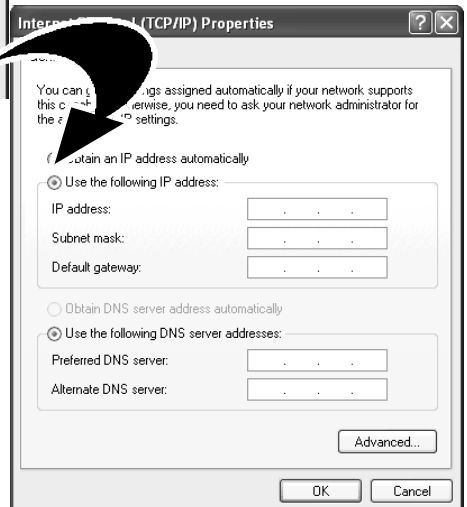


Select **Internet Protocol (TCP/IP)** and click **Properties**.

- iv. Click **Use the following IP address**. Enter the addresses as given by your ADSL Service Provider.
 - Click **Use the following DNS server addresses**. Enter the DNS server addresses as given by your ADSL Service Provider.
 - Click **OK**. Click **OK** again to close.

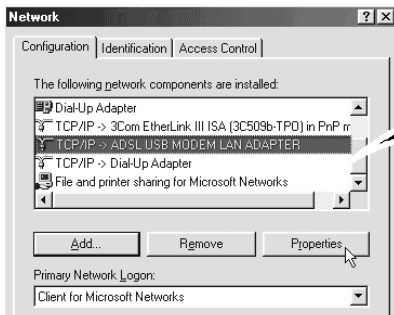
Restart your system when prompted.

You can start surfing the Internet by launching your Internet Browser.

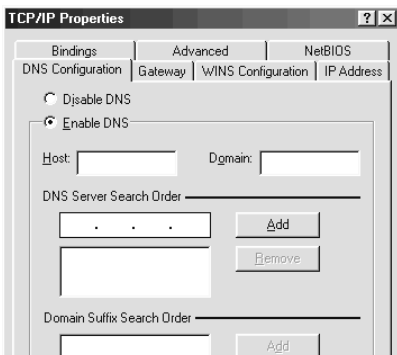
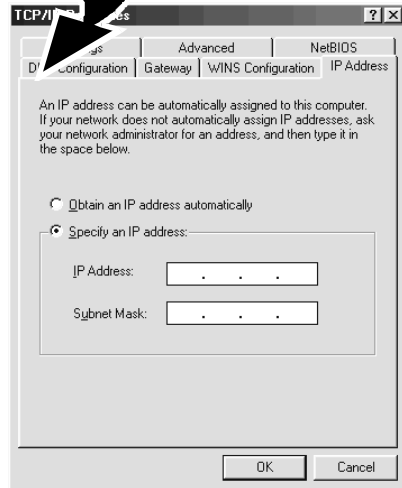


3.2 Configuring the IP Settings - For Windows® Me / Windows® 98 Second Edition

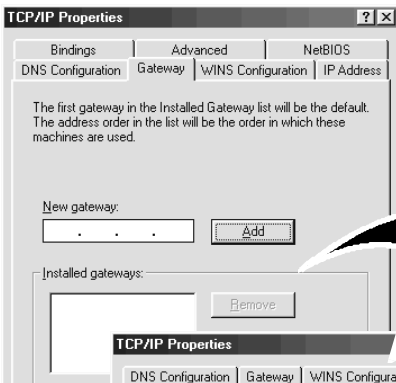
- i. From your Windows desktop, right-click on the **Network Neighborhood** icon. Select **Properties**.
- ii. From the **Configuration** tab, select **TCP/IP-> ADSL USB MODEM LAN ADAPTER** and click **Properties**.



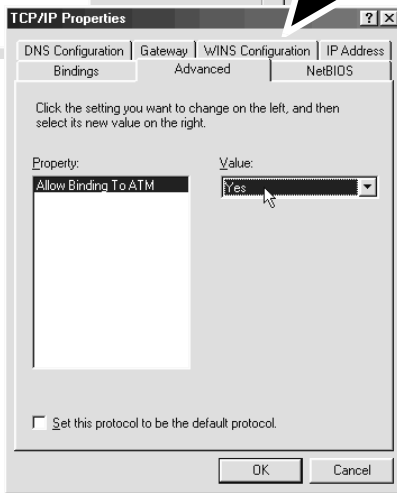
- iii. Select the **IP Address** tab.
Click **Specify an IP address**.
Enter the addresses as given
by your ADSL Service Provider.



- iv. Select **DNS Configuration** tab.
Click **Enable DNS**.
Enter the **Host** name.
Enter the **DNS Server Search Order**
addresses and click **Add**. (Values to be
provided by your ADSL Service Provider)



- v. Select the **Gateway** tab.
Enter the **New Gateway** address assigned by your ADSL Service Provider and click **Add**.



- vi. Select **Advanced** tab.
Select **Yes** from the **Value** drop-down list and click **OK**.

You can start surfing the Internet by launching your Internet Browser.

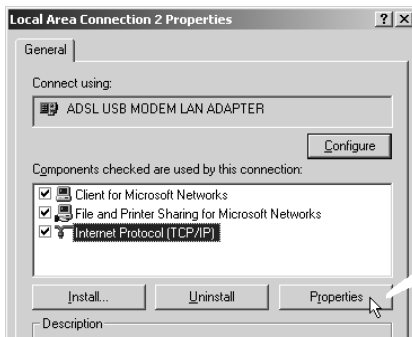
3.3 Configuring the IP Settings - For Windows® 2000

- i. From your Windows desktop, right-click on the icon **My Network Places**. Select **Properties**.

At the **Network and Dial-up Connections** window, right-click on the **Local Area Connection** icon and select **Properties**.

- ii. Ensure that the field **Connect Using** indicates **ADSL USB MODEM LAN ADAPTER**.

(This verification is important as you may more than one **Local Area Connection** icons installed in your system).



Select **Internet Protocol (TCP/IP)** and click **Properties**.

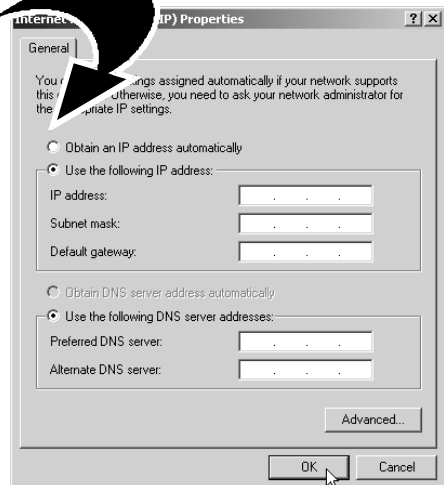
- iii. Click **Use the following IP address**. Enter the addresses as given by your ADSL Service Provider.

Click **Use the following DNS server addresses**. Enter the DNS server addresses as given by your ADSL Service Provider.

Click **OK**.

Click **OK** again to close.

Restart your system when prompted.




You can start surfing the Internet by launching your Internet Browser.

Step 4: Dial-Up to the Internet (for RFC 2364 and RFC 2516 users)



For RFC 1483 users, please install a third-party dial-up utility for your modem as required by your ADSL Service Provider.

For RFC 1577 users, you can start surfing the Internet by launching your Internet Browser.

- i. To connect to the Internet, double-click on the shortcut icon **ADSL USB MODEM DIAL-UP** on your Windows desktop.
(The shortcut icon was created when you have installed the modem driver successfully).
- ii. Enter your **user name** and **password**. Click **Connect**.
- iii. Upon successful dial-up, you should be able to see an icon  displayed on your Windows system tray. Double-click on the icon.
Duration indicates the amount of time you are connected to the Internet. You may click **Disconnect** to end your session.

If you are not able to connect to the Internet, please refer to the **Frequently Asked Questions & Troubleshooting Guide**, '*I am not able to connect to the Internet.*' on your Installation CD.

- All other company or product names are trademarks or registered trademarks or service marks of their respective owners.