

IMPORTANT:

Installing the Modem Driver under Windows® XP for DSL700P Users

This booklet contains the additional information for **DSL 700P ADSL Modem Card User's Manual**. Below are the steps to install your modem driver under **Windows® XP** to support BroadBand Connection:



Check the **volume label** on the **DSL700P Installation CD** that comes with your modem package. If your CD volume label is **2.0**, proceed with the following instructions to install your modem driver.

If your CD volume label is **not 2.0**, please download the latest Windows® XP driver from the website www.aztech.com.sg/sgsupport.htm (under DSL TURBO 700P driver). Create a folder on your hard disk (e.g. C:\XPdriver) and unzipped the file that you have downloaded this folder. You may now proceed with the following instructions to install your modem driver.

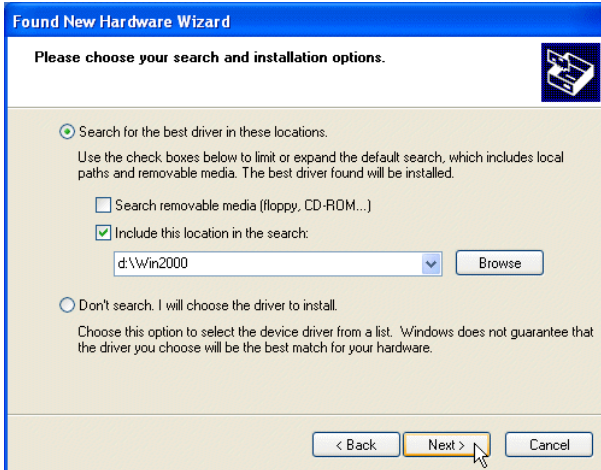
1. Power on your computer to start Windows. It will detect the newly-installed ADSL modem card and prompt for its driver.

Select **Install from a list or specific location (Advanced)** and click **Next**.



2. Select **Search for the best driver in these locations.** Check the box **Include this location in the search.**

For users with Installation CD of **volume label 2.0**, place the Installation CD onto your CD-ROM drive. Click **Browse** and navigate to 'Win2000' folder on the Installation CD. Click **Next**.

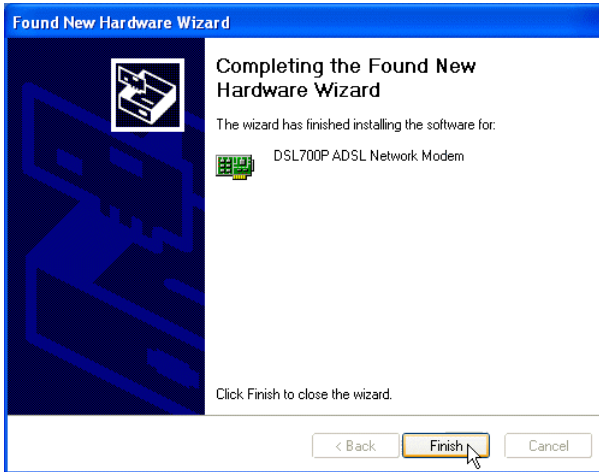


For users with **other volume labels**, click **Browse** and navigate to the folder (e.g. C:\XPdriver, see Note on page 1) that you have downloaded the latest driver. Click **Next**.

3. At the following prompt, click **Continue Anyway**.



4. Click **Finish** to complete the driver installation.



5. You may now proceed with the User Manual on **Chapter 5 - Connecting to the Internet.**