



DSL700P

Version 1.1

ADSL MODEM CARD

User's Manual

(Configured for Broadband Service)

Product warranty does not apply to damage caused by lightning, power surges or wrong voltage usage.

Contents



Chapter 1	Introducing DSL700P	5
	1.1 Package	6
Chapter 2	Before You Begin	7
	2.1 Minimum System Requirements	7
	2.2 Safety Precaution	8
	2.3 Installation Notes	8
Chapter 3	Setting Up Your Modem Card	9
	3.1 Installing Your Modem Card	9
	3.2 Connecting Your Modem Card	11
Chapter 4	Installing the Modem Driver	12
	4.1 Installing the Modem Driver - For Windows® 98 Second Edition .	13
	4.2 Installing the Modem Driver - For Windows® Me	16
	4.3 Installing the Modem Driver - For Windows® XP	18
	4.4 Installing the Modem Driver - For Windows® 2000	20
Chapter 5	Verifying Your Modem	23
Chapter 6	Connecting to the Internet	26
	6.1 Connecting to the Internet	26
	6.2 Ready to Go!	28
Chapter 7	Uninstalling Your Modem	29
Appendix A	ADSL MAPI Icon	30
	A-1 MAPI LEDs	30
	A-2 MAPI Menu	31
Appendix B	Technical Specifications	35
	B-1 Drivers Support	35
	B-2 Features	35
	B-3 ADSL Chipset	36

	B-4	ADSL Software Support	37
	B-5	Interfaces	37
Appendix C		Frequently Asked Questions	38
Appendix D		Troubleshooting Guide	41
Appendix E		Technical Support	45
		Aztech Sales Enquiries	45
		Aztech Technical Support	45
		Technical Support Considerations	46

Chapter 1



Introducing DSL700P

Congratulations on your purchase of DSL700P ADSL Modem card!

ADSL, which stands for ***Asymmetric Digital Subscriber Line***, is the latest communication technology that offers faster and uninterrupted Internet access.

The **DSL700P** is a PCI based Controller-less ADSL modem. It is capable of data rate in both Full-Rate and G.Lite, with **Full Rate transmission up to 8 Mbps downstream, 640 Kbps upstream** and **G.Lite transmission up to 1.5 Mbps downstream, 512 Kbps upstream**.

The ADSL modem makes use of your existing phone line for Internet surfing and at the same time, allows you to talk on the phone! As your phone line is dedicated to your home, your connection to the Internet will also be highly secured and reliable!

DSL700P definitely meets more than comfortably, the demands of today's bandwidth intensive applications!

1.1 Package

Check that you have the following listed items inside your DSL700P package. For any missing item, please contact your dealer immediately.

- 1 DSL700P ADSL Modem Card
- 1 User's Manual
- 1 DSL700P Installation CD
- 2 Micro-Filters (optional)
- 1 RJ-11 Telephone Extension cable

Chapter 2



Before You Begin

This chapter contains information that you need to know before installing your modem card. Please go through them before proceeding with the installation.

2.1 Minimum System Requirements*

2.1.1 Hardware

- IBM PC-based computer with Pentium® MMX 233 processor or equivalent
- 1 CD-ROM drive
- 1 free PCI Bus slot
- 32MB RAM
- 30MB free hard disk space# for system files and modem drivers (Windows CD-ROM may be required during installation, depending on your system configurations.)

2.1.2 Software - Operating System

- Windows® 98 Second Edition
- Windows® Me
- Windows® XP
- Windows® 2000

* The information listed are minimum system requirements needed to install your ADSL modem card. Please check and ensure that your system also meets the minimum system requirements set by the ISP you subscribed to. Your system should meet the higher requirements of the two.

#Additional free hard disk space may be required for your Internet Service Provider (ISP) installation program and browser installation. Please check with your ISP.

2.2 Safety Precaution

- Do not remove your card from its protective bag until you are ready to install it.
- Always try to hold your card by its edges. Avoid touching any electronic components on your card.
- Static electricity can cause permanent damage to your card. To prevent such a damage, you must ground yourself during the installation:
 - » Use a grounding strap - a coiled wire with a clip at one end and an elastic strap at the other. Wear the strap around your wrist and attach the clip to any non-painted metal surface of your computer chassis.
 - » If you do not have a grounding strap, touch any non-painted surface of your computer chassis before you begin installation, and again every minute or so until the installation is completed.

2.3 Installation Notes

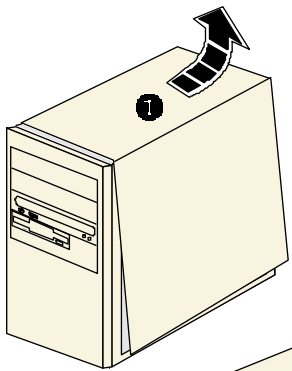
- The graphics and screen illustrations shown in this manual may differ from what you see in your system, but the steps still apply.
- A Philips screwdriver is required.
- The documentation for your computer should come in handy during the setting up of your modem card. Have it ready by your side.
- You may be prompted for your Windows CD-ROM during the driver installation. Have it ready by your side.

Chapter 3

Setting Up Your Modem Card

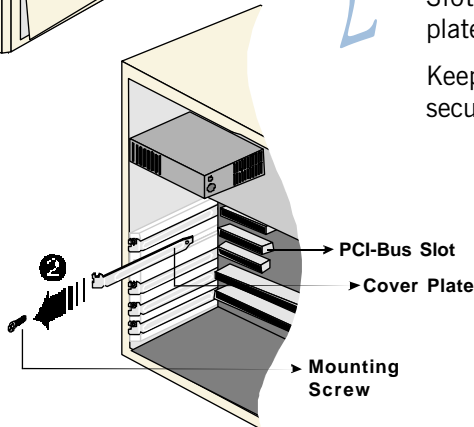
This chapter contains information on how to install and connect the modem card.

3.1 Installing Your Modem Card



1

Remove the cover of your computer.

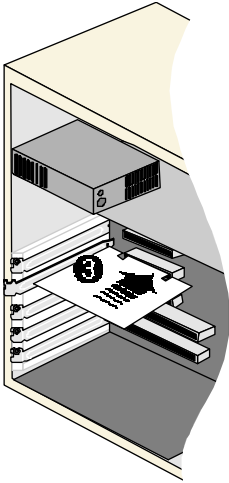


2

Locate any available PCI Bus Slot and remove its cover plate.

Keep the mounting screw to secure your card later.

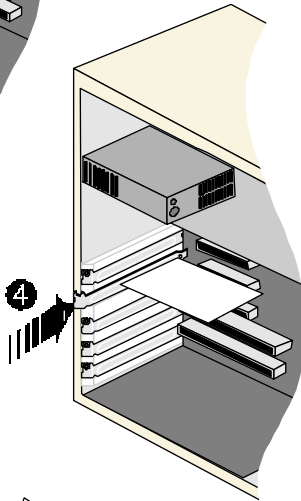
3. Setting Up Your Modem Card



3

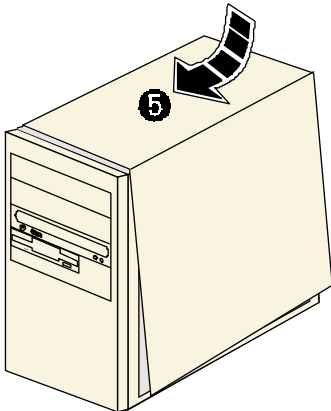
Align your card with the selected PCI-Bus slot and firmly push it into the slot.

If the card does not slide in, do not force it. Make sure that the card is aligned properly and try again.



4

Secure your card to the computer chassis with the mounting screw.

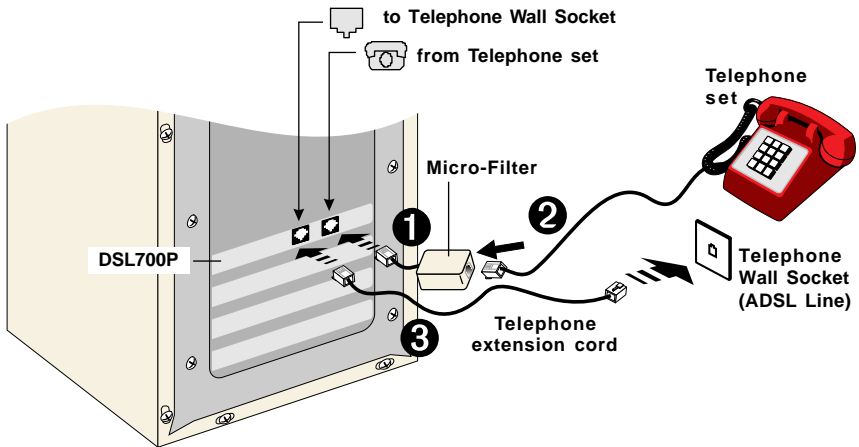


5

Replace the cover of your computer.

This completes the ADSL modem card installation. Please proceed to the following section to connect the card to ADSL line.

3.2 Connecting Your Modem Card



This completes the ADSL modem card connection. Please proceed to the next chapter to install the driver for your modem.



The connection to the **Telephone set** is **optional**. The **Phone** jack provides convenience to users who need to use the phone when accessing the computer.

The **Micro-Filter** is not required if you are not connecting to a **Telephone set**. For details on the usage of Micro-Filter, you may refer to the **Frequently Asked Questions**, '*Do I need to use Micro-Filter when using ADSL?*'.



Installing the Modem Driver

This chapter contains information on how to install the driver for your ADSL modem card in Windows® 98 Second Edition, Windows® Me, Windows® XP and Windows® 2000.



1. The screens illustrations in this chapter assume that your **CD-ROM Drive** is 'D'. Please change the letter according to your own CD-ROM drive.
2. **Depending on your system configurations, you may be prompted for your Windows 98 Second Edition CD-ROM during the driver installation. Have it ready by your side.**
3. **The screen shots, screens information and steps illustrated in this manual serve only as a guide. The exact information and steps you see on your system may vary, depending on your system configurations. For any dissimilarities, follow closely to the instructions as prompted on your PC screen.**



4.1 Installing the Modem Driver For Windows® 98 Second Edition

Power on your computer to start Windows. It will detect the newly-installed ADSL modem card and prompt for its driver.

1

Place the **DSL700P Installation CD** into your CD-ROM Drive and click **Next**.

2

Click the option **'Search for the best driver for your device. (Recommended).'** and click **Next**.

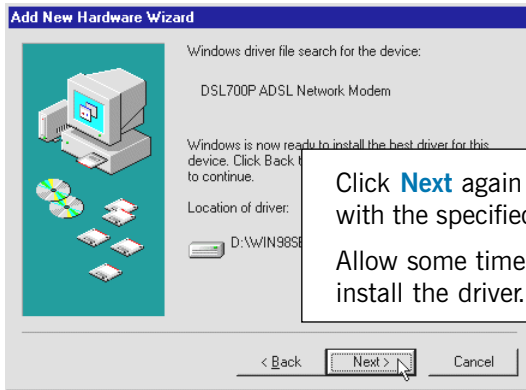
3

Select **Specify a location** and click **Browse...**

Navigate to the directory **'\Win98SE'** on your Installation CD and click **OK**.

Click **Next**.

4. Installing the Modem Driver

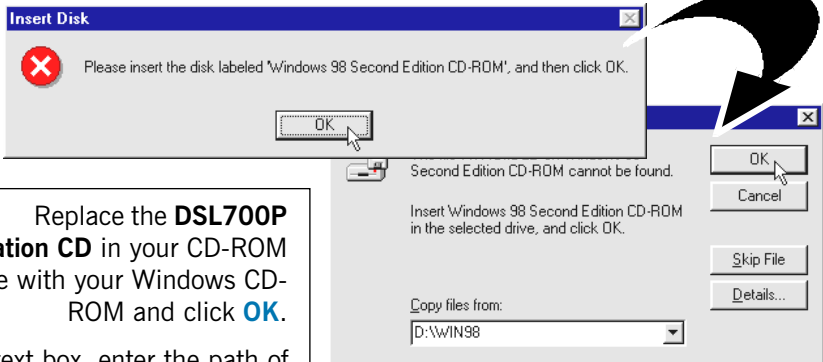


Click **Next** again to proceed installation with the specified driver.

Allow some time for your system to install the driver.

5

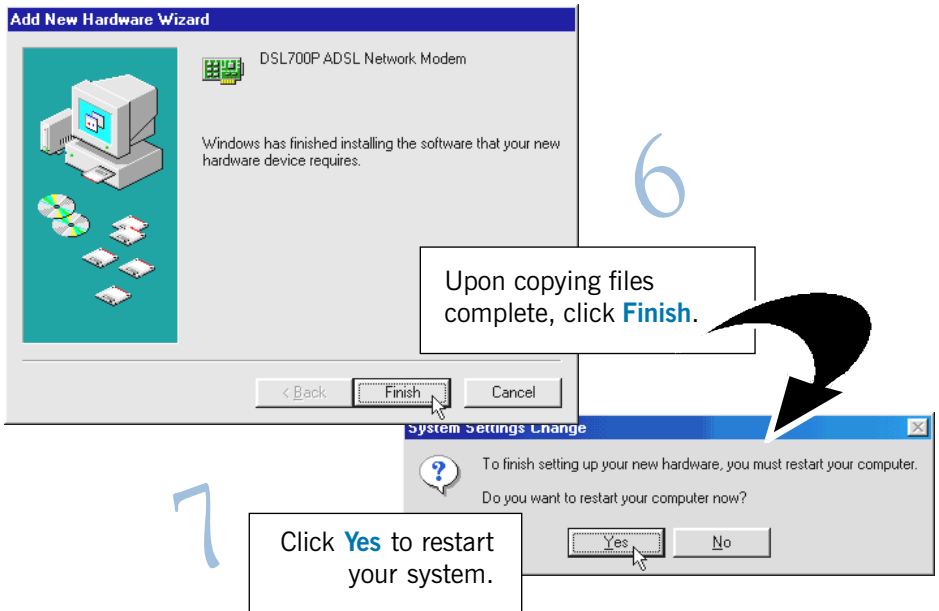
Depending on your system configurations, you may be prompted for your **Windows 98 Second Edition CD-ROM**.



Replace the **DSL700P Installation CD** in your CD-ROM drive with your Windows CD-ROM and click **OK**.

In the text box, enter the path of your Windows CD-ROM and click **OK**.

4. Installing the Modem Driver



This completes the driver installation for your ADSL modem card in Windows® 98 Second Edition.

Allow some time for your system to restart. Upon system rebooted, please proceed with the following chapter to verify if your driver has been installed properly.

4. Installing the Modem Driver

4.2 Installing the Modem Driver - For Windows® Me

Power on your computer to start Windows. It will detect the newly-installed ADSL modem card and prompt for its driver.

1

Place the **DSL700P Installation CD** into your CD-ROM Drive.

Select the option **'Specify the location of the driver (Advanced)'** and click **Next**.

2

Select the option **'Specify a location'**.
Click **Browse...**

Navigate to the directory **'WinMe'** on your Installation CD and click **OK**.

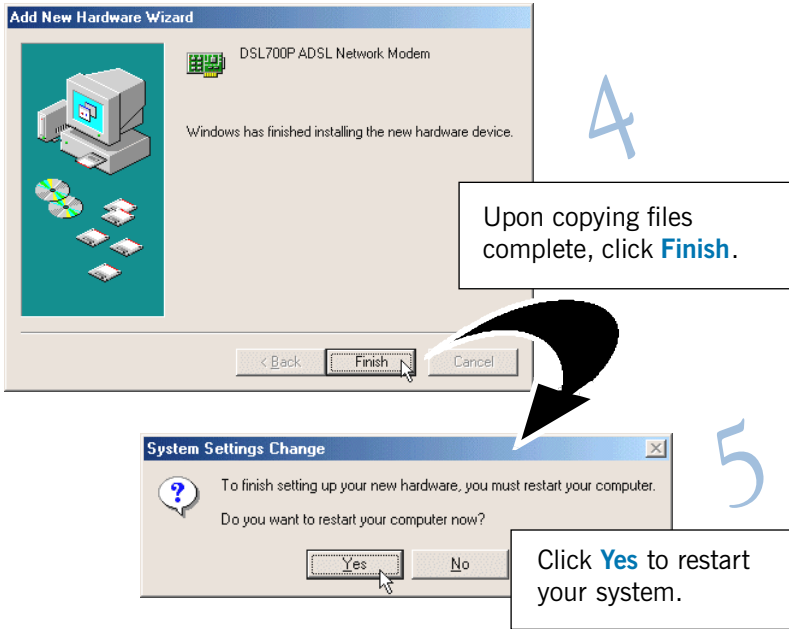
Click **Next**.

3

Click **Next** again to proceed installation with the specified driver.

Allow some time for your system to install the driver.

4. Installing the Modem Driver



This completes the driver installation for your ADSL modem card in Windows® Me.

Allow some time for your system to restart. Upon system rebooted, please proceed with the following chapter to verify if your driver has been installed properly.

4. Installing the Modem Driver

4.3 Installing the Modem Driver - For Windows® XP

Power on your computer to start Windows. It will detect the newly-installed ADSL modem card and prompt for its driver.

1

Select **Install from a list or specific location (Advanced)** and click **Next**.

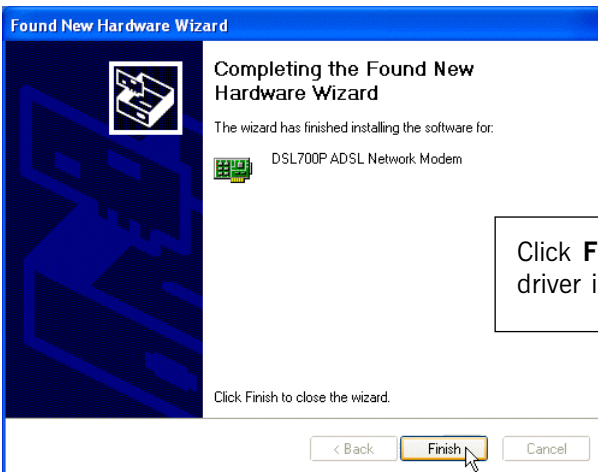
2

Select **Search for the best driver in these locations**.
Check the box **Include this location in the search**.
Click **Browse** and navigate to **\WinXP** folder on the Installation CD.
Click **Next**.



3

At the following prompt, click **Continue Anyway**.



4

Click **Finish** to complete the driver installation.

This completes the driver installation for your ADSL modem card in Windows® XP.

Please proceed with the following chapter to verify if your driver has been installed properly.

4. Installing the Modem Driver

4.4 Installing the Modem Driver - For Windows® 2000

Power on your computer to start Windows. It will detect your newly-installed ADSL Network Modem Card and prompt for its driver.

1

Welcome to the Found New Hardware Wizard

This wizard helps you install a device driver for hardware device.

To continue, click Next.

< Back Next > Cancel

2

Search for a suitable driver for my device (Recommended)

< Back Next > Cancel

3

Optional search locations:

- Floppy disk drives
- CD-ROM drives
- Specify a location
- Microsoft Windows Update

< Back Next > Cancel

Place the **DSL700P Installation CD** into your CD-ROM Drive and click **Next**.

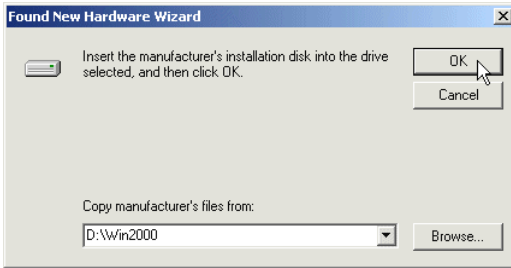
Click the option **'Search for a suitable driver for my device. (Recommended).'** and click **Next**.

Select **Specify a location** and click **Next**.

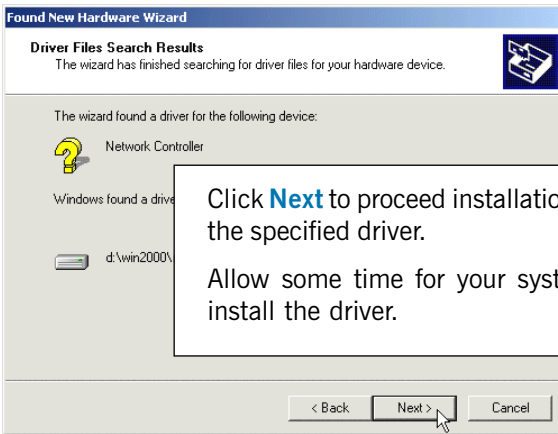
4

Click **Browse**. Navigate to '\Win2000' directory on your Installation CD and click **OK**.

Click **OK** again.



5

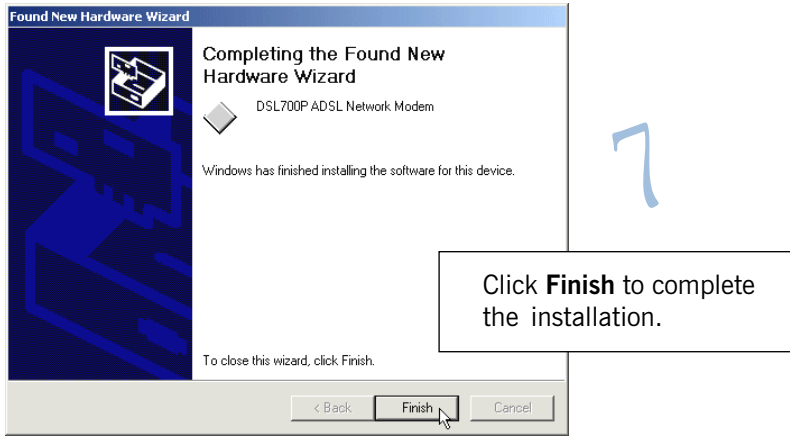


6

You may be prompted with **New Signature Not Found** dialog box. This occurs when Windows detected a newer version of your driver.

Click **Yes** to proceed.

4. Installing the Modem Driver




This completes the driver installation for your ADSL Network Modem Card in Windows® 2000. Please proceed to the following chapter to verify if your driver has been installed properly.

Chapter 5

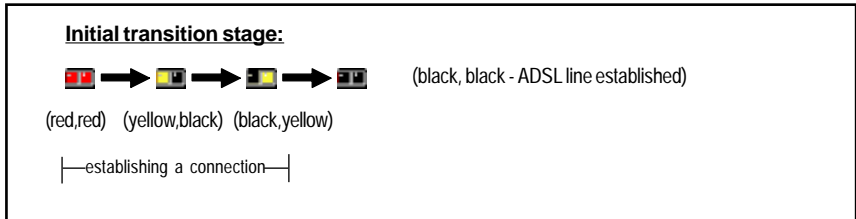
Verifying Your Modem


This chapter contains instructions to help you check whether the driver for your modem has been installed properly, as well as to check the status of your ADSL line.


Make sure that you have carry out your connections and driver installation as described in [Chapter 3](#) and [4](#).

- i) You should see the **MAPI** icon  displayed at your Windows system tray. This implies that your modem driver has been installed successfully.

The following illustrates the initial transition stage of the **MAPI** icon.



If you see a **'strike-off' MAPI icon**¹ , it means that you did not install the modem driver properly. Please re-install your driver as described in [Chapter 4 - Installing the Modem Driver](#).

1 A **MAPI icon**  is displayed at the Windows system tray when your modem driver is installed successfully. This icon allows you to monitor your ADSL line connection, configure your VPI/VCI values, run diagnostics test and so on. The different MAPI LEDs light indicates different connection states. For details, please refer to [Appendix A - ADSL MAPI Icon](#).

5. Verifying Your Modem

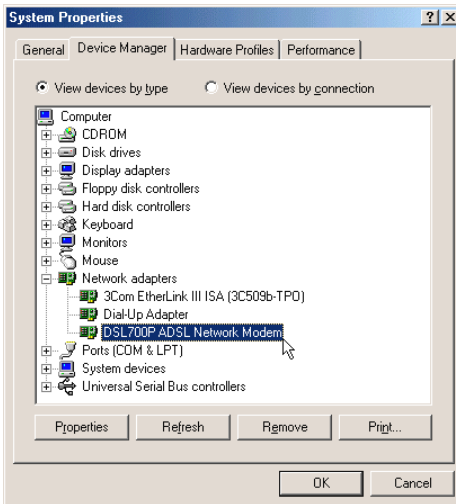
- ii) Alternatively, you may check your **Device Manager** for the listing of **DSL700P ADSL Network Modem**.

For Windows® 98 Second Edition / Windows® Me

- a) From your Windows desktop, right-click on **My Computer**. Select **Properties**.
- b) Select **Device Manager** tab. Double-click on **Network adapters**.

You should see **DSL700P ADSL Network Modem** listed. Else, re-install your driver as described in **Chapter 4 - Installing the Modem Driver**.

(If you see a yellow exclamation mark on your network modem device, it means that you did not install your driver properly. Select the device and click **Remove**. Re-install your driver as described in **Chapter 4 - Installing the Modem Driver**.)

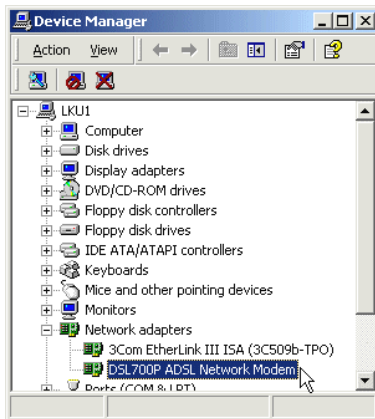


For Windows® XP / Windows® 2000

- a) From your Windows desktop, click **Start** > **My Computer** and select **Properties** (for Windows® XP) or right-click on **My Computer** and select **Properties** (for Windows® 2000).
- b) Click **Hardware** tab. Select **Device Manager** button.
- c) Double-click on **Network adapters**.

You should see **DSL700P ADSL Network Modem** listed. Else, re-install your driver.

(If you see a yellow exclamation mark on your network modem device, it means that you did not install your driver properly. Right-click on the network modem device and click **Remove**. Re-install your driver as described in **Chapter 4 - Installing the Modem Driver**.)



Chapter 6

Connecting to the Internet

This chapter contains information on how to connect to the Internet in Windows® 98 Second Edition, Windows® Me and Windows® 2000.

6.1 Connecting to the Internet

1

To connect to the Internet, double-click on the dial-up icon from your Windows desktop.




(This icon was generated during your modem driver installation. If you do not see the icon from your Windows desktop, re-install your driver as described in [Chapter 4 - Installing the Modem Driver.](#))

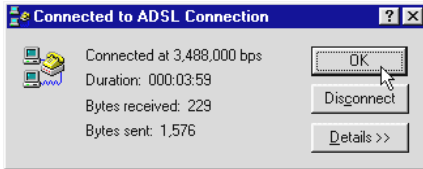
2

From the **Connect To** dialog box, enter your **user-id@isp** and **Password** given by your Internet Service Provider. Click **Connect**.



Upon successful dial-up, you should be able to see the icon  at your Windows system tray.


Double-click on the icon. You will be able to see the following dialog box.

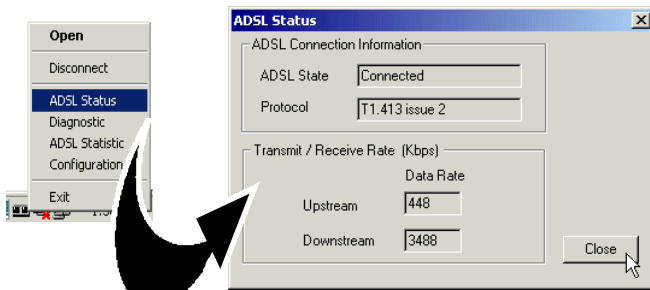


(The connection speed indicates the speed that the ADSL modem can achieved. Your actual connection speed will depend on the subscription plan that you have signed-up with your Internet Service Provider.)

 **If you are not able to establish your Internet connection, please refer to [Appendix D - Troubleshooting Guide](#) on 'I am not able to connect to the Internet.'**

3

To check the ADSL connection status, right-click on the **MAPI Icon** . Select **ADSL Status**. The **ADSL State** should indicate **Connected** if your ADSL connection is successful.



(The figures shown are examples only. Your data rates may not be as shown.)

6. Connecting to the Internet


6.2 Ready to Go!

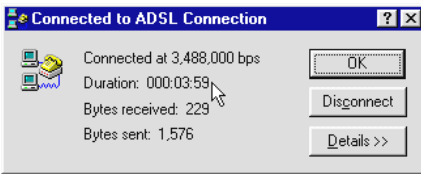
You are now connected to the Internet.

Launch your Internet Browser ([Internet Explorer](#) / [Netscape Navigator](#) / [Netscape Communicator](#) and so on).

You may start surfing!


6.2.1 Checking the Session Connection time

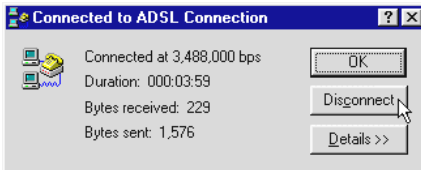
Upon successful dial-up, you should be able to see the icon  at your Windows system tray. Double-click on the icon. Check your connection time by looking at the **Duration**.



(The connection speed indicates the speed that the ADSL modem can achieved. Your actual connection speed will depend on the subscription plan that you have signed-up with your Internet Service Provider.)

6.2.2 Disconnecting from the Internet

Close your web browser. Double-click on the icon . Click **Disconnect**.



(The connection speed indicates the speed that the ADSL modem can achieved. Your actual connection speed will depend on the subscription plan that you have signed-up with your Internet Service Provider.)

Chapter

7



Uninstalling Your Modem

This chapter contains information on how to uninstall the modem in Windows® 98 Second Edition, Windows® Me, Windows® XP and Windows® 2000.

From your Windows desktop, click **Start** > **Programs** > **DSL700P**. Select **Uninstallation**.

Follow any on-screen instructions on your computer to complete the uninstallation process. Restart your system when prompted.

(For Windows® 2000 and Windows® XP users, system restart is not required. Uninstallation completes when you see the **MAPI Icon removed from the system tray.**

However, if you are re-installing DSL700P modem driver, you need to restart your system before doing so.)

Appendix


A



ADSL MAPI Icon

This chapter explains the functions on the MAPI Icon.

The MAPI Icon allows you to monitor your ADSL connection, ATM/ADSL states, configure the PVC values and run a few diagnostics tests.

Upon successful driver installation, the MAPI icon , will be displayed at your Windows system tray.

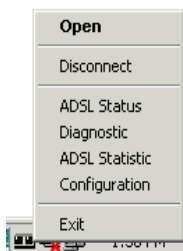
A-1 MAPI LEDs

The **left LED** indicates **information being transmitted** and the **right LED** indicates **information being received**. The following table summaries the LED activities.

LED	Description
Red, Red	No ADSL connection
Black, Yellow is flashing or Yellow, Black is flashing	Establishing ADSL connection
Black, Black	ADSL Connection established - no data traffic
Green, Green	ADSL Connection established - modem is transmitting and receiving data
Green, Black	ADSL Connection established - modem is transmitting data
Black, Green	ADSL Connection established - modem is receiving data
∅	Modem is disconnected, or a problem exists

A-2 MAPI Menu

Right-click the **MAPI Icon** . The **MAPI Menu** will be displayed. A-2-1 to A-2-5 will describe each of the options.



A-2-1 Connect/Disconnect (with reference to A-2. MAPI Menu)

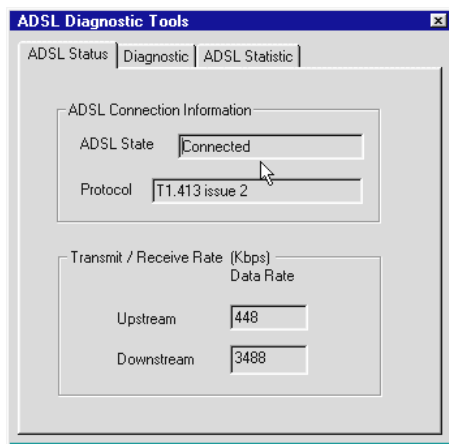
This option allows you to **connect or disconnect** from the Telephone Exchange.

For advanced users (A-2-2 to A-2-5)

A-2-2 ADSL Status (with reference to A-2. MAPI Menu)

This dialog box allows you to **monitor the ADSL connection** as well as the **transmit and receive line rates**.

- **ADSL State** displays the current status of the modem.
- **Protocol** displays which ADSL standard is being used.
- **Transmit/Receive Rate** shows the line rate for both the upstream and downstream.



A. ADSL MAPI Icon

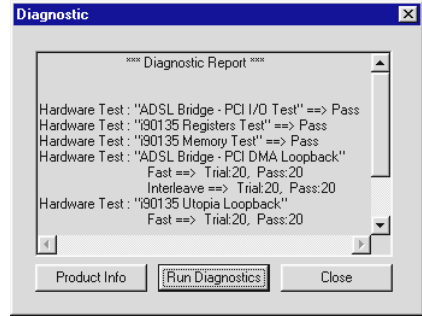
A-2-3 Diagnostic

(with reference to A-2. MAPI Menu)

This option allows you to **view the product information** and to **perform hardware test** on the ADSL card (e.g. ADSL Bridge test and Registers test).

Product Info lists the versions of the MAPI Icon and the protocol driver installed. The DLL version describes the software being used by both the drivers and MAPI Icon.

Run Diagnostics performs a brief hardware check and display the hardware status. *(Close all Dial-up sessions before running the diagnostic test.)*

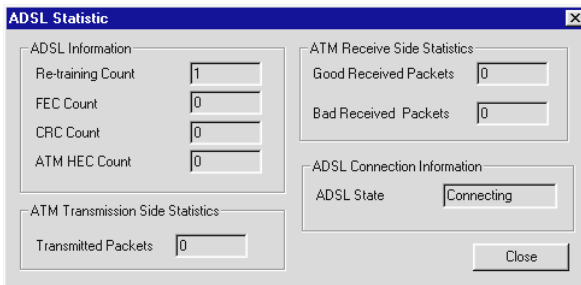


This information is useful whenever making a technical support call.

A-2-4 ATM/ADSL Statistic

(with reference to A-2. MAPI Menu)

This dialog box keeps tabs on **errors** that might affect overall system performance. The counts are reset whenever the PC system is restarted.



- **Re-training Count** tracks the *number of ADSL connections performed*. Due to unexpected line condition changes, the driver can retrain the connection causing the Re-training Count to increase.

ADSL implements Reed Solomon (RS) error checking:

- **FEC Count** tracks the *forward error correction count*.
- **CRC Count** tracks the *accuracy of correcting data errors* over each 17msec.
- **ATM HEC Count** (header error check) errors are recorded as an *indication of ATM packet accuracy*.

As a measure of packet transfer performance, the Packet Errors are counted and tracked against the total number of **Packets Received**. An error rate of less than 0.1% is reasonable under clean ADSL line conditions.

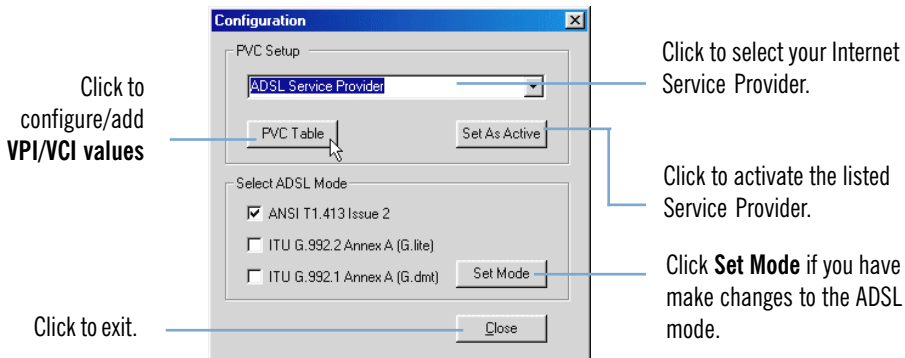
If you have received *Bad Received Packets* and are concerned about your service, multiply the Bad Received Packets count by *1000* and compare the result with the *total Packets Received* count. If the number is *smaller* than the total *Packets Received* count, then the board is operating normally.

- **ATM Transmission Side Statistics** displays the *number of packets transmitted*.
- **ATM Receive Side Statistics** displays the *number of good and bad packets received*.

A-2-5 Configuration

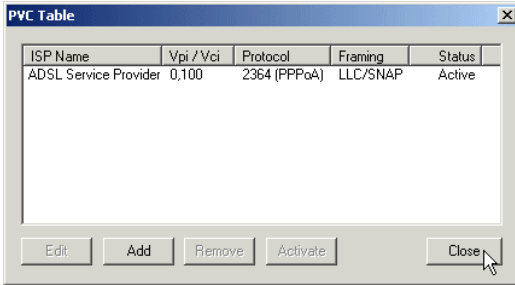
(with reference to A-2. MAPI Menu)

This option allows you to check or change the ADSL network modem **PVC values**.



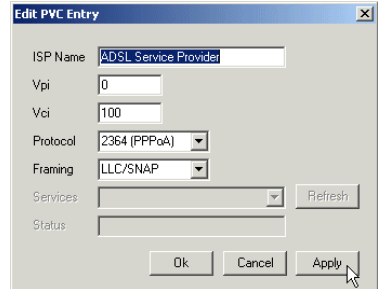
A. ADSL MAPI Icon

- To configure **VPI/VCI values** or add **multiple ISP names** or **multiple VPI/VCI values**, click **PVC Table**. The following window will be prompted.



- To **edit** any existing configuration(s), select the ISP and click **Edit**.

At the **Edit PVC Entry** prompt, overwrite the existing values with new values as given by your ADSL Service Provider and click **Apply**, followed by **OK**.



- To **add** a new configuration, at the **PVC Table** prompt, click **Add**. Enter your new ISP Name, VPI, VCI values and click **OK**.
- To **remove** an existing configuration, at the **PVC Table** prompt, click on the ISP Name and click **Remove**.
- You may **activate** any of your configurations by selecting the ISP Name and click **Activate**.

Appendix

B



Technical Specifications

This chapter contains the technical specifications of your card. The information may be more useful for technically inclined users.

B-1 Drivers Support

- Windows® 98 Second Edition
- Windows® Me
- Windows® XP
- Windows® 2000

B-2 Features

- 32-bit Controllerless ADSL PCI Modem
- UTOPIA Specifications Level I and Level II compliant
- ANSI T1.413 issue 2, ITU-T G.992.1 (G.dmt) and G.992.2 (G.lite) compliant
- Using Discrete Multi-Tone (DMT) line encoding scheme
- Full rate transmission at up to 8 Mbps downstream and 640 Kbps upstream
- G.lite transmission at up to 1.5 Mbps downstream and 512 Kbps upstream
- Rate Adaptive modem at 32 Kbps steps
- Up to 18,000 ft loop reach
- PCI 2.1 Power Management specification compliant
- Software upgradable for future feature enhancement
- Full RFC1483/RFC1577/ RFC2364 protocol stack support
- Spectral compatibility with POTs

B. Technical Specifications

B-3 ADSL Chipset

Using ITEX Apollo2 Chipset:

- I90188 ADSL PCI/UTOPIA Interface
- I90135 ADSL DMT Modem and ATM Framer
- I90134 ADSL Analog Front End
- NDIS 5.0 miniport driver

B-3-1 I90188 ADSL PCI/Utopia Interface

- PCI 32-bit Bus Master Interface compliant to PCI Specification v2.2
- UTOPIA Level I v1.0 and Level II v2.01 support for D0 and D3 hot
- I90135 Configuration Register Interface
- ANSI T1.413 issue 2, ITU-T G.992.1 (G.dmt) and G.992.2 (G.lite) compliant
- AC'97 Digital Controller compliant to AC'97 Specification 2.1
- +3.3-volt & +5-volt supplies, 1.60-pin PQFP

B-3-2 I90135 ADSL DMT Modem & ATM Framer

- ANSI T1.413 Issue 2 standard DMT modem with embedded ATM Framer
- Standard Utopia Level I and Level II ATM Interfaces
- DMT Modulation up to maximum of 256 tones (14 bits)
- ADSL/ATM cell-specific Framing and Deframing
- Generic ATM TC Layer functions
- ATM Specific TC Layer functions
- Rotor and Frequency Domain Gain Correction and Equalization
- Performs DMT Modulation, Demodulation, Reed-Solomon Encoding, Bit Interleaving, and 4D Trellis Coding
- 3.3-volt, 144-pin PQFP

B-3-3 I90134 ADSL Analog Front-End

- Integrated Analog Front End (AFE) for ADSL
- High sampling rate at 8.832 MHz for both ADC and DACs
- Two (2) 12-bit DACs, One 13-bit ADC

- Differential Analog Input/Output
- Accurate continuous-time low pass filters for channel filtering
- 3.3-volt, 64-pin LQFP

B-4 ADSL Software Support

- ATM Layer with Traffic shaping
- AAL ATM Attributes - AAL5 & SAR
- RFC-2364 PPP over ATM PVCs
- RFC-1483 Routed IP over ATM PVCs
- RFC-1577 Classical IP over ATM PVCs
- UNI 3.0, 3.1 and UNI 4.0 ATM Signalling

B-5 Interfaces

B-5-1 External connectors

- 2 x RJ-11 Telephone socket for telephone line & handset



The specifications herein are subject to change without prior notification.



Frequently Asked Questions

This chapter provides the answers to some of the commonly asked questions on your modem.



What is ADSL ?



ADSL, Asymmetric Digital Subscriber Line, is a broadband communication technology designed for use on regular phone lines. It has the ability to move data over the phone lines at speeds up to 140 times faster than the analog modem available today.



Why is it called Asymmetric ?



It is called asymmetric because more bandwidth is reserved for receiving data than for sending data. This is useful because many users of the Internet receive much more data than they send.



What are the benefits of ADSL over analog modems ?



Besides the high-speed advantage, ADSL connection is always on. There is no longer a need to log on and off, no more busy signals and no more waiting for the connection to be established - it is always there. On top of these, you can use the phone even when the data connection is on. You do not need to switch between surfing the Net and talking over the phone.



Will my modem constantly connect near the maximum speed ?



At ADSL speeds, the limitations are much more of the performance of the Internet server you are trying to reach and the amount of traffic on the Internet.





Can I connect to Broadband Service everywhere I go?



No, you cannot. You can connect to this service only via ADSL phone line enabled for Broadband Service provided by your Internet Service Provider (ISP).



Can I run both dial-up modem and ADSL modem simultaneously?



Yes, but it is not recommended. You may experience slowness during surfing as well as incurring additional cost of maintaining two active connections.



Can I use my Broadband Service user ID to log in to 56K dial-up access on a normal telephone line using a 56K dial-up modem?



Yes, you can.



Do I need to use Micro-Filter when using ADSL?



Yes, if you are sharing the ADSL line with your telephone set. See [Figure C-1](#) on the following page for the Micro-Filter connection.

The Micro-Filter would eliminate noise on the telephone line to ensure the best possible networked phone performance. All other telephone line extensions using the **same** telephone number will need to attach to a Micro-Filter between the telephone set and the telephone wall socket connecting to it. If your ADSL uses a different line and not sharing with your telephone, then a Micro-Filter wouldn't be necessary.



How do I most efficiently connect Micro-Filters to my telephone network ?

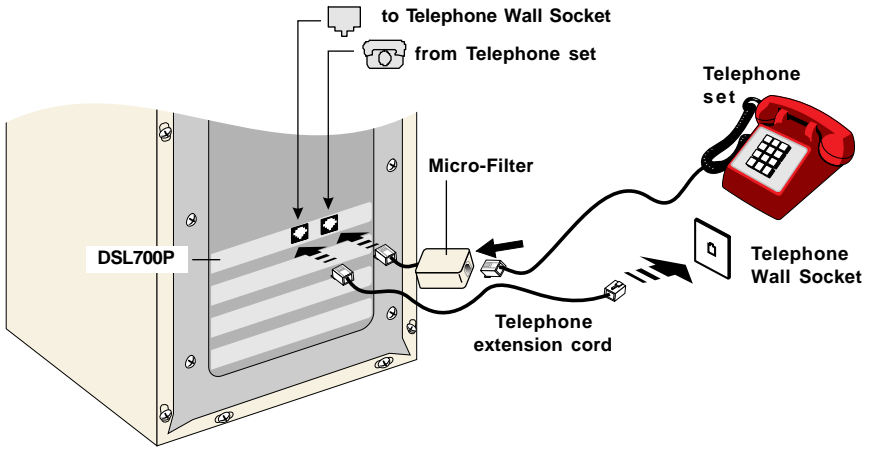


Please refer to the illustration below.

Generally, you should abide to the following rules:

1. There must not be any Micro-Filters between your ADSL modem card and your Telephone Wall socket.
2. Micro-Filters are not required if you are not connecting to your Telephone sets.
3. Restrict the number of Micro-Filters to a maximum of 4.

C. Frequently Asked Questions



C-1. Connecting Micro-Filter to your Telephone



Troubleshooting Guide

You may encounter some problems while installing or using your modem. This chapter highlights some of the more common issues concerning your modem and their possible solutions.



My system does not detect the network modem when I boot up for the first time.



Make sure your network modem is fully inserted into the PCI Bus slot.

However, if you are sure that the modem has been properly installed, do the following:

1. From the Windows taskbar, click **Start** > **Settings** > **Control Panel**.
2. Double-click on the **System** icon.
3. Click the **Device Manager** tab.
4. Check whether there is any yellow exclamation mark (error) on the network devices. If yes, remove the network modem devices (refer to **Chapter 7 - Uninstalling Your Modem**) and reinstall the modem driver as described in **Chapter 4 - Installing the Modem Driver**.



The MAPI Icon on the taskbar retrains (with blinking yellow LEDs) every time I use the phone while surfing on the Internet.



Make sure that you have connected the Micro-Filter as described in **section 3.2 - Connecting Your Modem Card**.



My ADSL card constantly tries to establish a ADSL connection (with blinking yellow LEDs), but fails.



Verify the following points:

1. From the **MAPI Menu**, select **Disconnect** and **Connect** again.
2. Try restarting your PC system and reconnect.
3. If the condition changes with the time of the day, there could be a possible problem with the line.
4. Appliances near your PC may also be introducing noise to your ADSL service. Minimise appliances around your PC.



There isn't any MAPI Icon displayed on my system tray.



You need to install Dial-Up Networking (DUN) version 1.3 to have the MAPI Icon. Have you upgraded your DUN to version 1.3 ?

If DUN v1.3 is already installed, try restarting your PC. Else, uninstall the driver and try installing again.



I accidentally exited from my MAPI Icon. How do I called out the icon again ?



To call out the icon, click **Start > Programs > DSL700P > ADSL Diagnostics Tools**.



There is no sound when video is being streamed.



Ensure that Master Volume Control under the desktop system tray (bottom right hand corner of your screen) is not set to "mute".



My ADSL connection disconnects when I run the Diagnostic program.




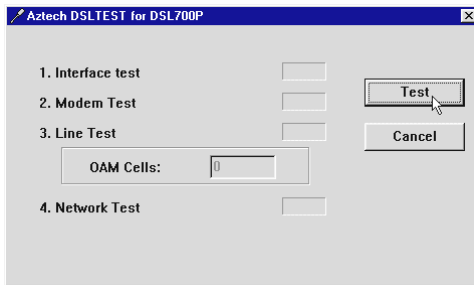
Running the Diagnostic program will disconnect your card from the ADSL Line. To re-activate the ADSL Line, right-click the **MAPI Icon** and select **Connect**.



I am not able to connect to the Internet.

Carry out the following test to verify your connections.

1. From your Windows desktop, double-click on  (DSLTEST) icon.
2. Click **Test**. (Table D-1 gives the description of the tests.)



The tests listed will commence. You should get a **PASS** for all the tests.

Should your test(s) fails, please refer to **Table D-1** for the solution.

Test	Description	Result=FAIL
Interface test	To test if your driver is installed properly.	Re-install your modem driver.
Modem test	To check if your system is communicating with the modem.	Check with your Internet ADSL Service Provider.
Line test	To check if the ADSL link to ATM Network has been established.	
Network test	To check if the Internet connection is ok.	

Table D-1. Test Descriptions.



If one of the test failed, subsequent tests will be skipped. Please proceed to fix the problem first before running the test program again.



When I try to connect to the Internet by clicking the **ADSL Connection** icon, an error message **'Request service is unknown'** is displayed.



Check that you have entered the correct user name. Another reason could be that you are not registered for the listed service. Subscribe to the service and try again.



Technical Support

Aztech Sales Enquiries

Hotline : (65) 741 7211 (Marketing and Sales Department)
Email : sales@aztech.com
Fax : (65) 749 1198
Working Hours : Monday to Friday - 0900 to 1700
Saturday/Sunday/Public Holidays - Closed

Aztech Technical Support

Hotline : (65) 749 2062
Email : support@aztech.com
Fax : (65) 749 1198
Working Hours : Monday to Friday - 0900 to 1700
Saturday/Sunday/Public Holidays - Closed

Technical Support Considerations

Majority of enquiries can be resolved efficiently. However, there may be cases when it is beyond our technical support to assist you. We may not be able to assist you in:

- **Hardware conflicts**
We will try to discover them and make suggestions but we are unable to repair them over the telephone.
- **Software conflicts**
Removal of other software and reinstalling our software may be the only solution.
- **O/S problem**
If you encounter problems like fatal exception or illegal operation, kindly refer to your PC vendor.
- **Modifications made to your software**
Our technical support officers are trained to support the software we provide as part of our service and they are knowledgeable about a wide range of other programs. However, we are unable to support software that has been modified.