

## Installing Your USB Device



If your computer/notebook is connected to the **USB Port** of the ADSL Router, proceed with [Step 2.1](#). If your computer/notebook is connected to the **Ethernet Port** of the ADSL Router, proceed with [Step 2.2](#). If your computers/notebooks are connected to both the USB and Ethernet Ports of your ADSL Router, please proceed with both [Step 2.1](#) and [2.2](#)!

### 2.1 Installing the USB Driver Device



1. Proceed with this section **ONLY** if your computer/notebook is connected to the **USB Port** of your ADSL Router!
2. The following screen shots illustrated serve only as examples. For any dissimilarities, please follow closely the instructions prompted on your Computer/Notebook.
3. For Windows® 98 users, you may be prompted for your Windows CD-ROM. Have it ready by your side.

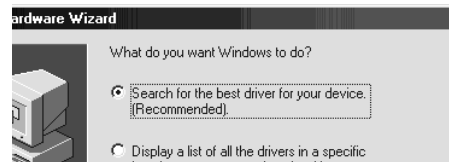
#### 2.1.1 Installing the USB Driver Device - For Windows® 98

- i Power on your computer/notebook to start Windows. Place the **Installation CD** into your CD-ROM Drive. At the following prompt, click [Next](#).



## Easy Start

- ii Select **Search for the best driver for your device (Recommended)** option and click **Next**.



- iii Click **CD-ROM drive** option and click **Next**.



- iv Click **Next** to proceed installation with the indicated driver.
- v Click **Finish** to complete the USB driver installation.



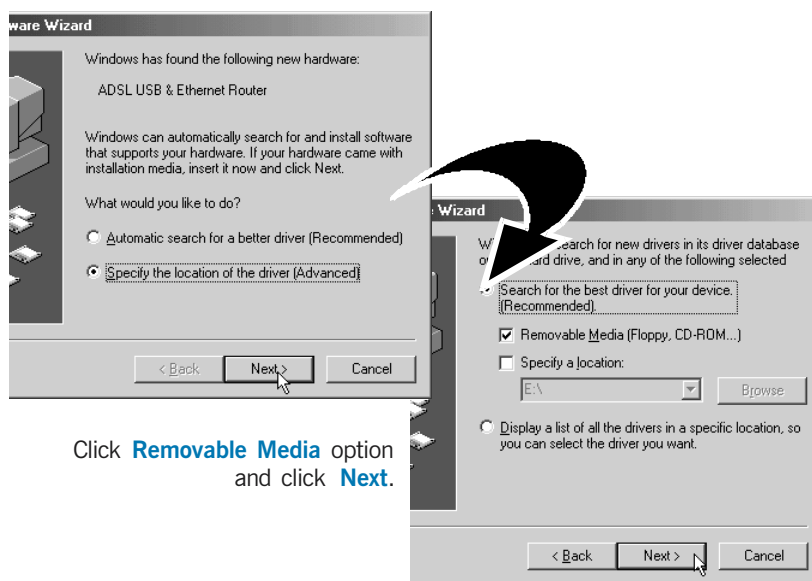
- vi Restart your system when prompted.

During installation, you may be prompted for your Windows CD-ROM. At the prompt, replace the **Installation CD** in your CD-ROM Drive with your **Windows CD-ROM** and click **OK**.

At the **Copying Files** dialog box, enter the path of your Windows CD-ROM (e.g. D:\win98) and click **OK**.

## 2.1.2 Installing the USB Driver Device - For Windows® Me

- i Power on your computer/notebook to start Windows. Place the **Installation CD** into your CD-ROM Drive.
- ii At the following prompt, select **Specify the location of the driver (Advanced)** option and click **Next**.



- iii Click **Removable Media** option and click **Next**.

- iv Click **Next** again to proceed installation with the indicated driver.
- v Click **Finish** to complete the USB driver installation.
- vi Restart your system when prompted.

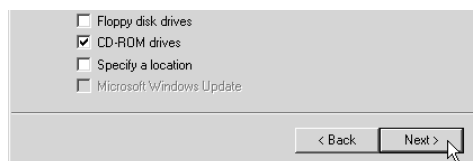
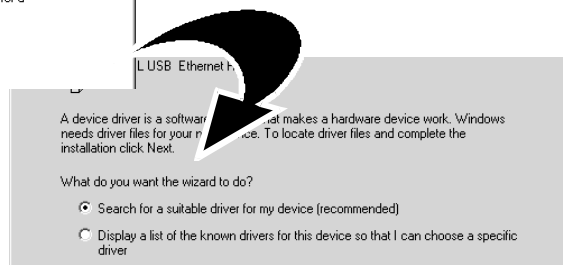


### 2.1.3 Installing the USB Driver Device - For Windows® 2000

- i Power on your computer/notebook to start Windows. Place the **Installation CD** into your CD-ROM Drive.
- ii At the following prompt, click **Next**.



- iii Select **Search for a suitable driver for my device (recommended)** option and click **Next**.



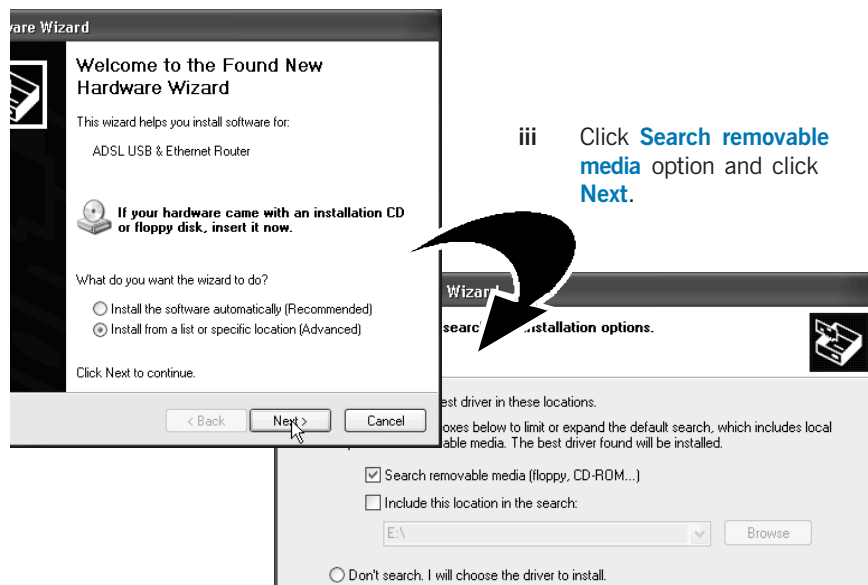
- iv Click **CD-ROM drives** option and click **Next**.

- v At the next prompt, click **Next** to proceed installation with the indicated driver.
- vi Click **Finish** at the following prompt to complete the USB driver installation.



## 2.1.4 Installing the USB Driver Device - For Windows® XP

- i Power on your computer/notebook to start Windows. Place the **Installation CD** into your CD-ROM Drive.
- ii At the following prompt, select **Install from a list or specific location (Advanced)** option and click **Next**.



- iv At the next prompt, click **Next** to proceed installation with the indicated driver.
- v Click **Finish** to complete the USB driver installation.

