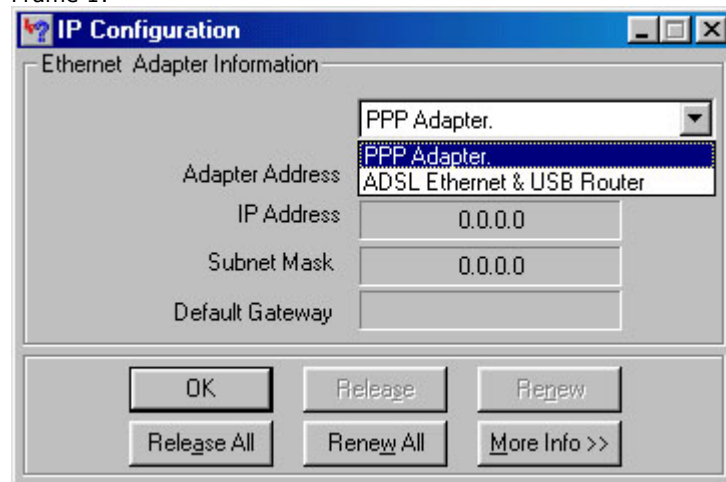


## Trouble Shooting DSL305EU USB Driver.

Frame 1:



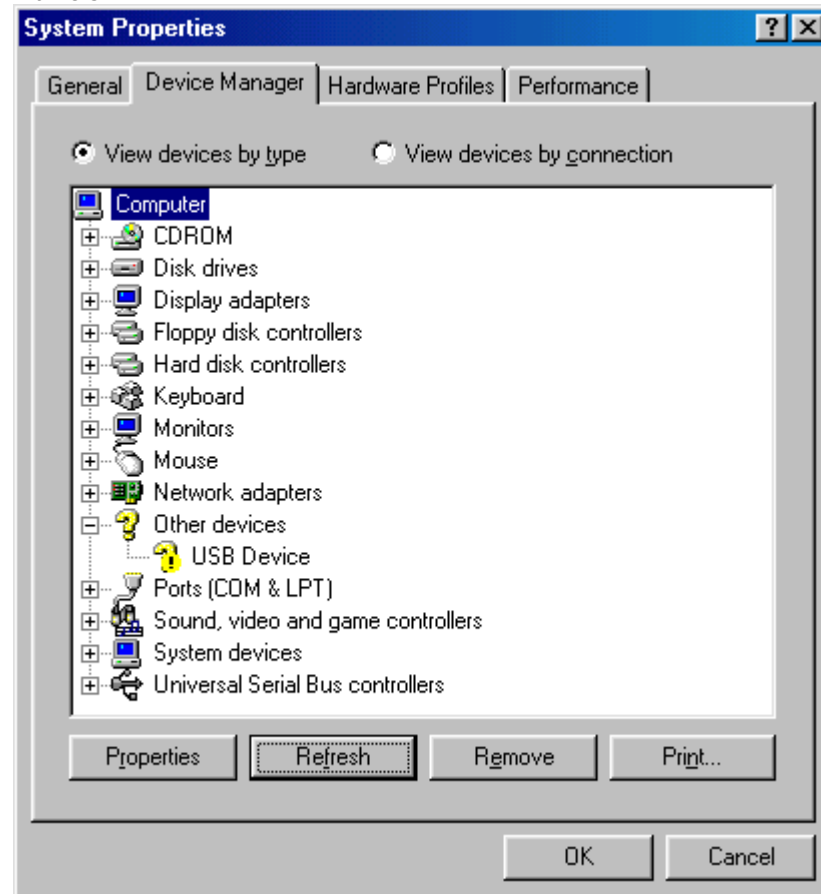
1. Click **Start**.
2. Click **Run**.
3. Type **windowsipcfg** and click OK
4. An example shown on the left.
5. Check "**ADSL Ethernet & USB Router**" is present.
6. If present, select "**ADSL Ethernet & USB Router**".
7. Click on Release to release IP Address.
8. Click on Renew to renew IP Address.
9. You are ready to access the Router when you get an IP address.
10. If not present go to Frame 2.

Frame 2:



1. Click **Start**.
2. Select **Setting**.
3. Click **Control Panel**.
4. Double Click "**Add/Remove Programs**"
5. An example shown on the left.
6. Check "**ADSL Ethernet & USB Router**" is shown.
7. If shown, Select "**ADSL Ethernet & USB Router**"
8. Click "**Add/Remove ...**" to remove the driver.
9. The program will prompt you to restart PC. At this point **remove** your Router.
10. Go to Frame 4.
11. If "**ADSL Ethernet & USB Router**" is not shown go to Frame 3.

Frame 3:



1. Click Start.
2. Select Setting.
3. Click Control Panel.
4. Double Click on the System.
5. Select Device Manager.
6. An example shown on the left.
7. Check is there any "Other Devices" and show "USB Device". (Note: This **will not show** if the Router is unplug)
8. If shown, select USB Device and click Remove.
9. Unplug the Router after Step 8 is complete.
10. Restart the PC.

Frame 4:



1. After the PC has restart. Plug in the Router.
2. The OS will detect the Router and will shown a dialogue box as shown on the left.
3. Insert the DSL305EU Driver CD to the CD-ROM
4. Click **Next**.

Frame 5:



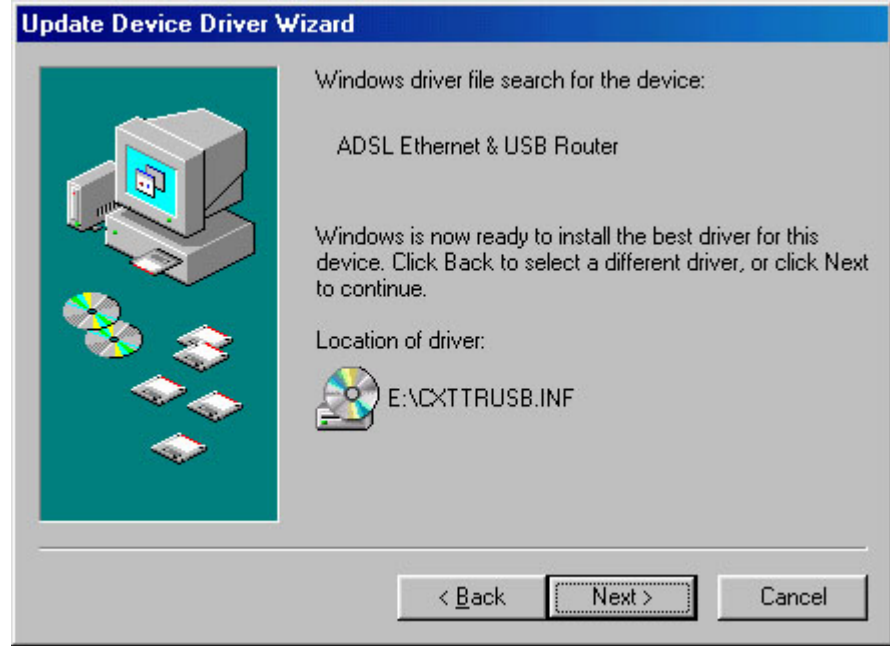
1. The next dialogue box will shown as on the left.
2. Select as shown on the left and click **Next**.

Frame 6:



1. The next dialogue box will shown as on the left.
2. Select as shown on the left and click **Next**.

Frame 7:



1. The next dialogue box will shown as on the left.
2. Click **Next** to continue.
3. The driver will install to the PC and the program will prompt you to restart the PC.
4. Go back to Frame 1 to ensure the driver is installed properly.