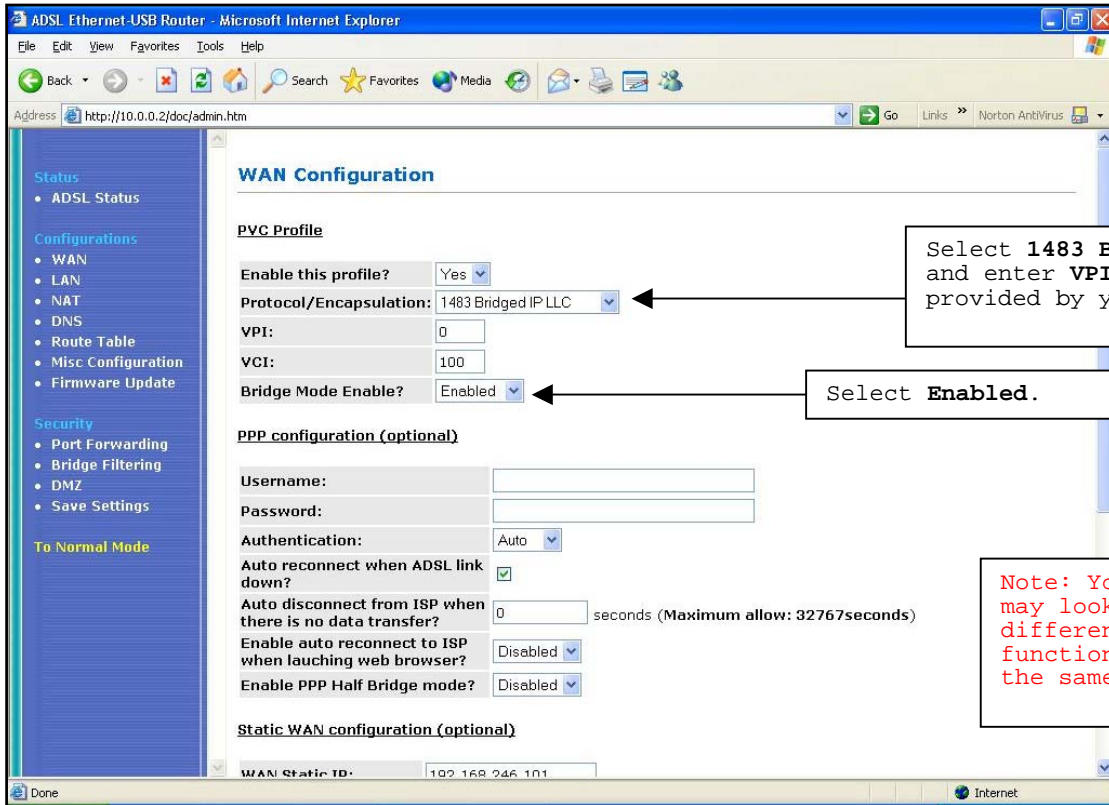


Setting Up DSL305EU to Full Bridge Mode

Step 1: Login to the DSL305EU. Default login is "10.0.0.2" with user name as "admin". Leave the password field empty.

Step 2:

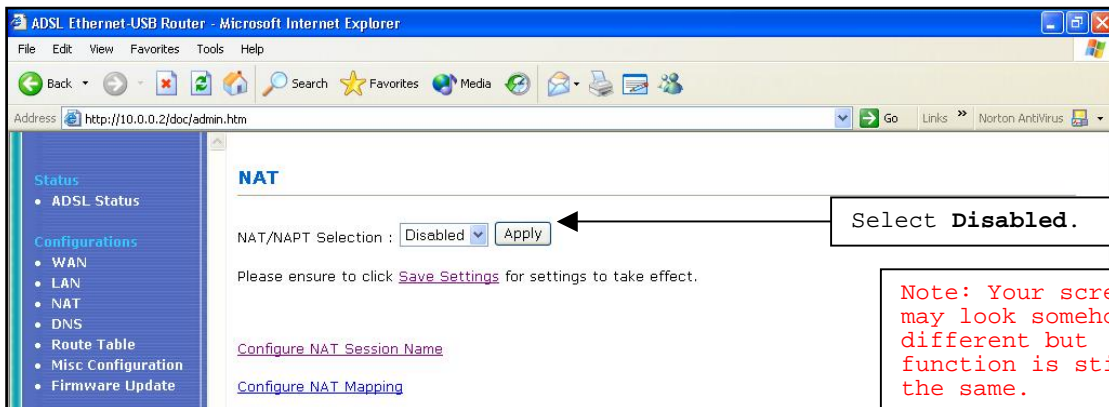
- o Click on the "To Admin mode" link.
- o Under Configuration, Click "WAN"



- o Under the PVC profile, select "1483 Bridged IP LLC" type of "Protocol/Encapsulation" and enter the "VPI", "VCI" values provided by your ISP. You need to check this values from your ISP.
- o Make sure "Bridge Mode Enable?" is Enabled.
- o Click "Submit" button.

Step 3:

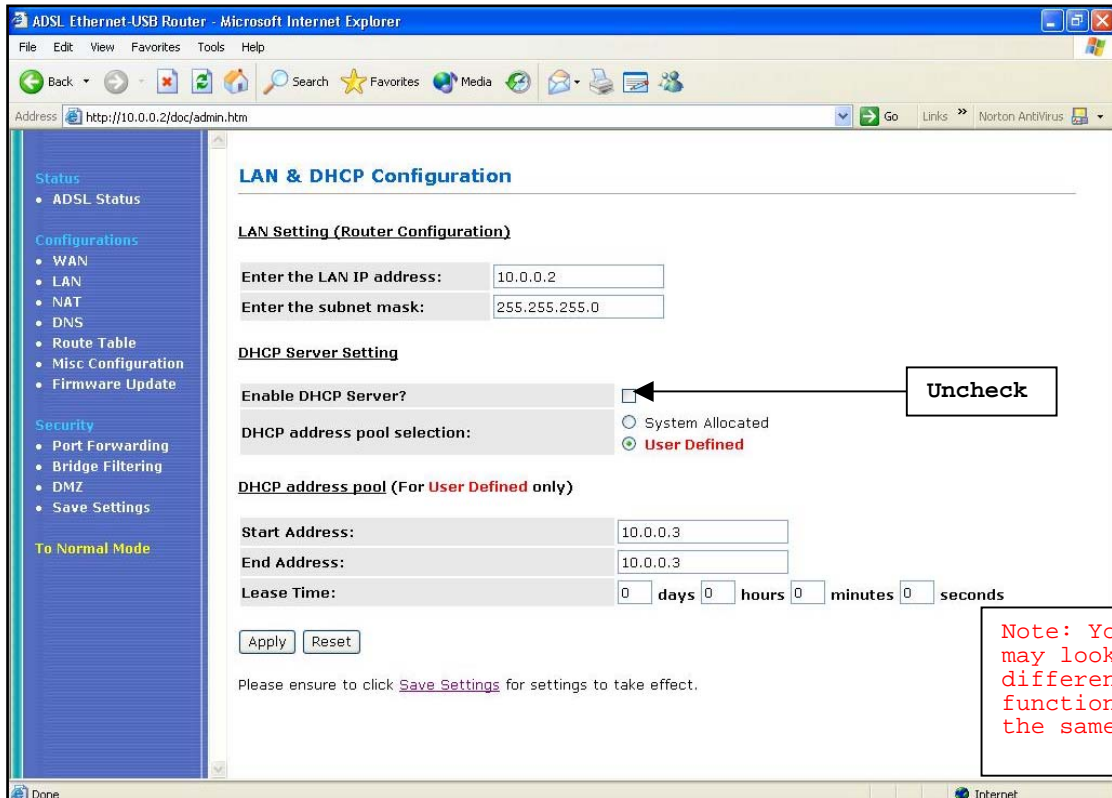
- o Under Configuration, Click "NAT"



- o "Disabled" NAT/NAPT.
- o Click "Apply" button.

Step 4:

- o Under Configuration, Click "LAN"



- o "Uncheck" the "Enabled DHCP Server".
- o Click "Apply" button.

Step 5:

- o Click "Save Settings" to save the configuration to the DSL305EU.

Note: You will not be able to log in to the DSL305EU when you have set it to a full bridge mode. Please do a hard reset to revert it back to factory default.

Disclaimer:

For customers who utilize our ADSL Ethernet Modems with the 3rd Party Broadband router, any configuration/trouble-shooting issues of the 3rd Party Broadband Router, please contact the support personnel of the 3rd Party Broadband Router Company directly for help and support.