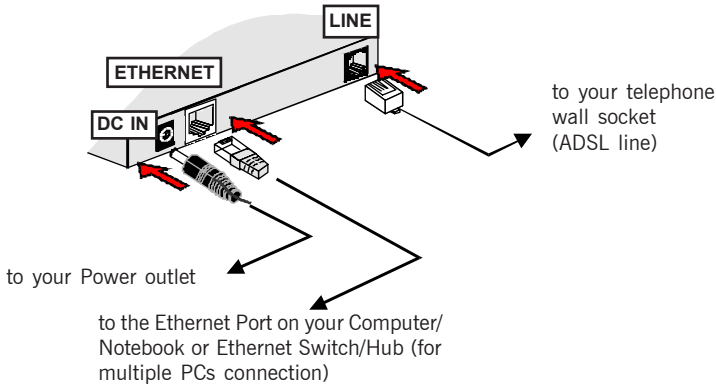


# Firmware Upgrade Procedures



## Setting up your ADSL Ethernet Modem

- i. Connect the Modem to your computer as follows.



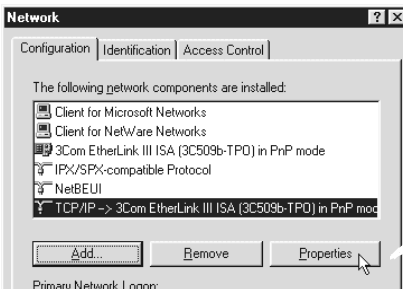
- ii. Power on the Power Outlet that is connected to your ADSL Ethernet Modem.
- iii. Power on your Computer(s)/Notebook(s).



## Ethernet Network Card Configurations

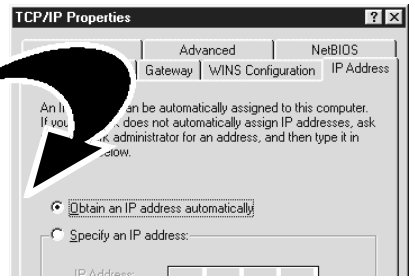
### For Windows® 98 Second Edition / Windows® Me

- i. From your Windows desktop, right-click on the **Network Neighborhood** icon. Select **Properties**.
- ii. From the **Configuration** tab, select **TCP/IP-> xxx** where **xxx** refers to the **model of your Ethernet Card that is connected to your ADSL Ethernet Modem**. Click **Properties**.



(This screen shot uses **3Com EtherLink** Ethernet card model as an example).

- iii. Click the **IP Address** tab.  
Click the option **Obtain an IP address automatically** and click **OK** to save the settings.



Ensure that your ADSL Ethernet Modem is powered on. Restart your system.

## For Windows® 2000 / Windows® XP

### i Windows® 2000:

- From your Windows desktop, right-click on the icon **My Network Places** and select **Properties**.
- At the **Network and Dial-up Connections** window, right-click on the **Local Area Connection** icon and select **Properties**.

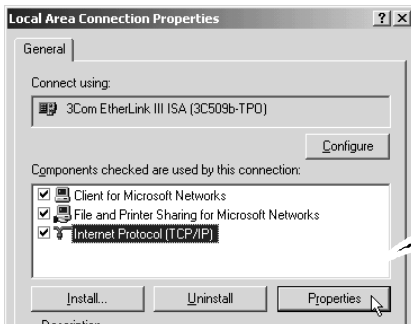
### Windows® XP:

(Instructions are based on default **Start menu** option)

- From your Windows desktop, click **Start > All Programs > Accessories > Communications > Network Connections**.
  - Right-click on the **Local Area Connection** icon that reflects **the model of your Ethernet Card that is connected to your ADSL Ethernet Modem** and click **Properties**.
- ii Ensure that the field **Connect Using** indicates the model of your Ethernet Card that is connected to your ADSL **Ethernet Modem**.

(This is important especially if you have more than one **Local Area Connection** icons displayed at the **Network and Dial-up Connections / Network Connections** window. Ensure that you have selected the correct one.)

Select **Internet Protocol (TCP/IP)** and click **Properties**.

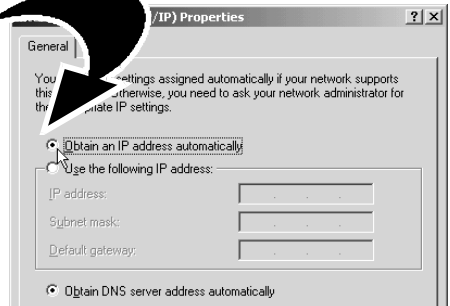


(This screen shot uses **3Com EtherLink** Ethernet card model as an example).

- iii Select the option **Obtain an IP address automatically** and click **OK**.

Click **OK** again to close.


**Ensure that your ADSL Ethernet Modem is powered on. Restart your system.**

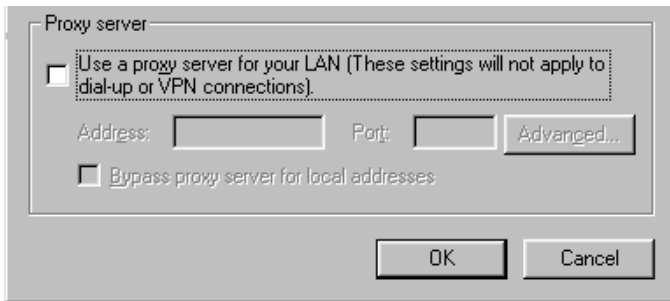


# 3

## Internet Browser Configuration


### For Microsoft® Internet Explorer™ (based on IE 5.5)

- i From your Windows desktop, double-click on your Internet Explorer icon  to launch your Browser.
- ii From the Menu, click **Tools** and select **Internet Options...**
- iii Select the **Connection** tab. Click the field, '**Never dial a connection**'. (This option will be grayed off if you have not installed an analog modem on your computer/notebook before.)
- iv Click the **LAN Settings...** button. Ensure that your **Proxy Server** is not enabled.



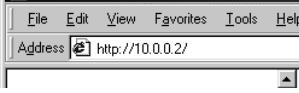
- v Click **OK** to close the dialog box.

### For Netscape® Navigator

- i From your Windows desktop, double-click on your Navigator icon  to launch your Browser.
- ii Depending on your Netscape versions, carry out one of the following instructions:  
Click **Options** > **Network Preferences**.  
Select **Proxies**. Ensure that the **No Proxies** option is selected.  
*OR*  
Click **Edit** > **Preferences**.  
Select **Advanced** and click **Proxies**. Ensure that the option **Direct Connection to the Internet** is enabled.
- iii Click **OK** for changes to take effect.

# 4 Firmware Update Configuration

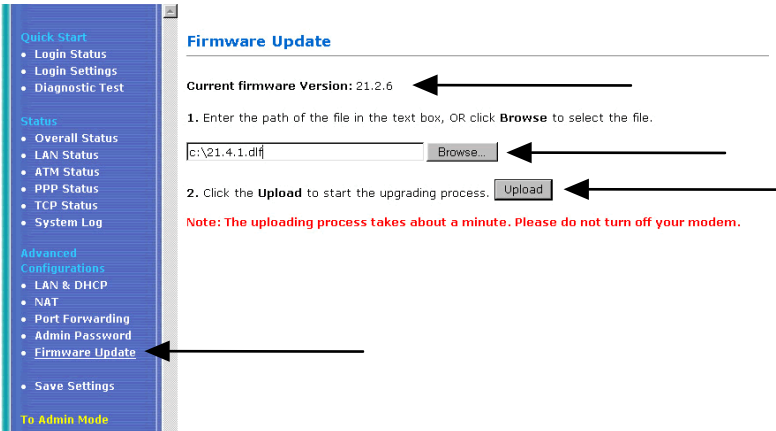
- i From your Internet Browser, key in **http://10.0.0.2** at the address bar and hit **<Enter>**.



- ii The following picture will show. Key in **admin** as username and leave the password field empty.



- iii. Click **Firmware Update**.
- iv. Click **Browse** to locate the firmware.
- v. Click **Upload** to load firmware to modem.



- vi. After uploading, the following picture will be shown, click [Reboot](#) for firmware to take effect.

## File successfully transferred!

You must reboot the system now!  
Click here to reboot Device - [Reboot](#)



- vii. The following picture will be shown once reboot is click.

## The modem is being rebooted. Please wait...

### WARNING !

The Ethernet and DSL LED on the modem will go off, please do not turn off your modem. Wait until the DSL light is blinking and press F5 to refresh the browser.

- viii. Go back to the [Firmware Update](#) page and verify that firmware version is 21.4.1.