

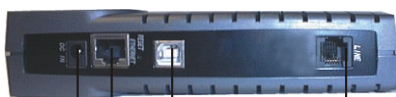
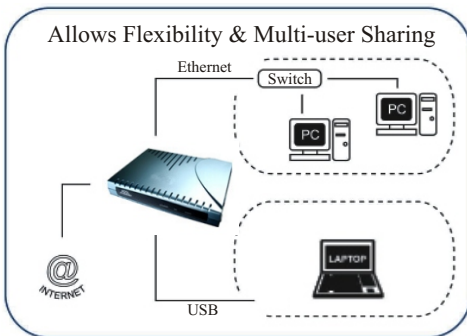
ADSL

ADSL Bridge / Router
Ethernet and USB
Web Based



The Aztech **DSL305EU** ADSL Ethernet Bridge/Router uses Conexant Rushmore solution that fully complies to ANSI T1.413 Issue 2, ITU-T G.992.1 (G.dmt) and G.992.2 (G.lite) ADSL standard. It supports Full-Rate ADSL transmission at up to 8Mbps downstream and up to 800 Kbps upstream. Furthermore, it is interoperable with major DSLAMs and support standard Ethernet network interface cards. Users have the flexibility of using either the USB or Ethernet in Bridge mode and utilizing both USB and Ethernet interfaces simultaneously in the Router mode.

Targeted at the residential users, it is also applicable to a multi-user environment with support of both Static and Dynamic IP Routing, Network Address Translation and Dynamic Host Configuration Protocol Server.



12VDC Power Jack RJ-45 Ethernet Port USB 1.1 Type B Port RJ-11 DSL/LINE Jack

Aztech
TOTAL POWER PERFORMANCE

www.aztech.com

DSL 305EU

ADSL Ethernet and USB Combo Bridge/Router for flexibility and multiuser sharing

ADSL/ATM Support

- ANSI T1.413 issue 2
- ITU-T G.992.1 (G.dmt) and G.992.2 (G.lite)
- Rate Adaptive modem at 32 Kbps steps
- ATM Layer with Traffic shaping (UBR/CBR)
- AAL ATM Attributes - AAL5
- Multiple PVC up to 8 support
- Spectral compatibility with POTS
- F4/F5 OAM

Memory

- Flash ROM - 2MB
- SDRAM - 8MB

Encapsulation Support

- RFC1577 Classical IP over ATM Support
- RFC2364 PPPoA client support
- RFC2516 PPPoE client support
- RFC2684 Bridge/Routed support
- Transparent Bridge (IEEE 802.1d)
- PPP Half Bridge Support

Network Support

- Static IP, Dynamic RIP2 routing support
- Network Address Translation (NAT)
- Port Mapping/Forwarding
- NAT Application Level Gateway for popular applications
- DHCP Server/Relay/client
- DNS Relay Agent
- VPN Pass Through for IPSEC, L2TP, PPTP
- PPP Auto Reconnect and configurable timeouts
- PPP Auto Reconnect on WAN Access / PPP on Demand
- IGMP Multicast Support

Management Support

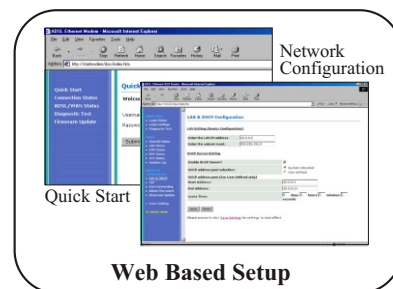
- Local Web/FTP Upload of Firmware
- Remote Firmware Upload via FTP
- FTP Server/Client Support
- Web Management/HTTP Server for configuration assistance
- System Logging support
- Firmware upgrade-able for future feature enhancement

Security Support

- PAP/CHAP for Password Authentication Support
- NAT for basic Firewall support
- Password Authentication to Modem

Platform Support

- USB Driver Support - Win 98SE, 2000, ME, XP
- Ethernet - OS Independent (support for Mac OS as well)



Head Office : AZTECH SYSTEMS LTD. 31 Ubi Road 1, Aztech Building, S408694.
Tel: (65) 6741-7211, Fax: (65) 6749-1198.
USA Office : AZTECH LABS, INC. 45276 Industrial Drive, Fremont, California, CA94538, USA.
Tel: 019(1)(510) 683-9800, Fax: 012(1)(510) 683-9803.
Germany Office : AZTECH SYSTEMS GmbH, Bottgerstrasse 2-14, 65439 Floersheim am Main, Germany.
Tel: 019(49)(6145) 952-5, Fax: 012(49)(6145) 952-499.
Hong Kong Office : AZTECH SYSTEMS (H.K.) Ltd, Unit 1806, 18/F 113 Argyle Street, Mongkok, Kowloon, Hong Kong.
Tel: 019(852) 2757-1177, Fax: 012(852) 2753-0578.
Malaysia Office : AZ-TECHNOLOGY SDN BHD, 59B 2nd Floor, Jalan SS 25/2, 47301, Petaling Jaya, Selangor,
Malaysia. Tel: (02)(03) 7804-8450, Fax: (02)(03) 7804-8457.