

ADSL USB Modem

Easy Start

Version 1.0

Contents

SAFETY GUIDELINES	2
PACKAGE	2
MINIMUM SYSTEM REQUIREMENTS	3
FRONT INDICATORS.....	3
SETTING UP YOUR ADSL USB MODEM USING PLUG-&-PLAY	4
SETTING UP YOUR ADSL USB MODEM USING SETUP	9
MACINTOSH DRIVERS INSTALLATION	13
CONFIGURING THE MODEM FOR MACINTOSH	16
CONFIGURING THE IP SETTINGS (FOR RFC 1483 ROUTED USERS ONLY).....	18
DIAL-UP TO THE INTERNET (FOR RFC 2364 AND RFC 2516 USERS)	23
UNINSTALLING THE MODEM DRIVER.....	27

Product warranty does not apply to damage caused by lightning, power surges or wrong voltage.

Safety Guidelines

- Keep the modem away from fluid, direct sunlight and excessive heat.
- During times of lightning strike/thunderstorm, do not use the modem.
- This product is for use only in UL Listed computers.
- To reduce the risk of fire, use only No. 26 AWG or larger telecommunication line cord.

About this Easy Start

This booklet contains information on setting up your ADSL USB Modem. It touches on the key installation procedures.



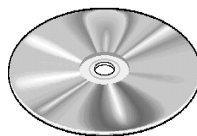
On commonly asked questions or for problems encountered during the setting up / running of your modem, please refer to the Frequently Asked Questions & Troubleshooting Guide located in the \Manuals folder on your Installation CD.

Package

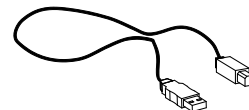
If you found any missing items, please contact your dealer immediately.
(The actual cables that are included with your package may differ in appearance from country to country)



ADSL USB Modem



Installation CD



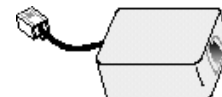
USB Cable



Easy Start



Telephone Extension Cable



Micro-Filter (optional) ¹

¹ Micro-Filter can be purchased separately from your dealer.

Minimum System Requirements

For Windows OS

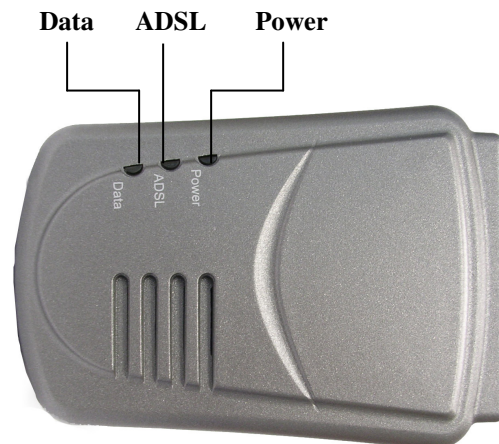
- IBM PC-based computer with Pentium® 233 processor
- 32MB RAM
- 20MB hard disk space (system files and modem driver only)
- A free USB Port
- CD-ROM drive
- Windows® 98 / 98 SE / Windows® Me / Windows® XP / Windows® 2000

For Mac OS

- Mac G4 or higher
- 32MB RAM
- 20MB free hard disk space
- USB Port
- Mac OS 8.6 / OS9.X / OS 10.X

Front Indicators

The indicators show the status for the following:



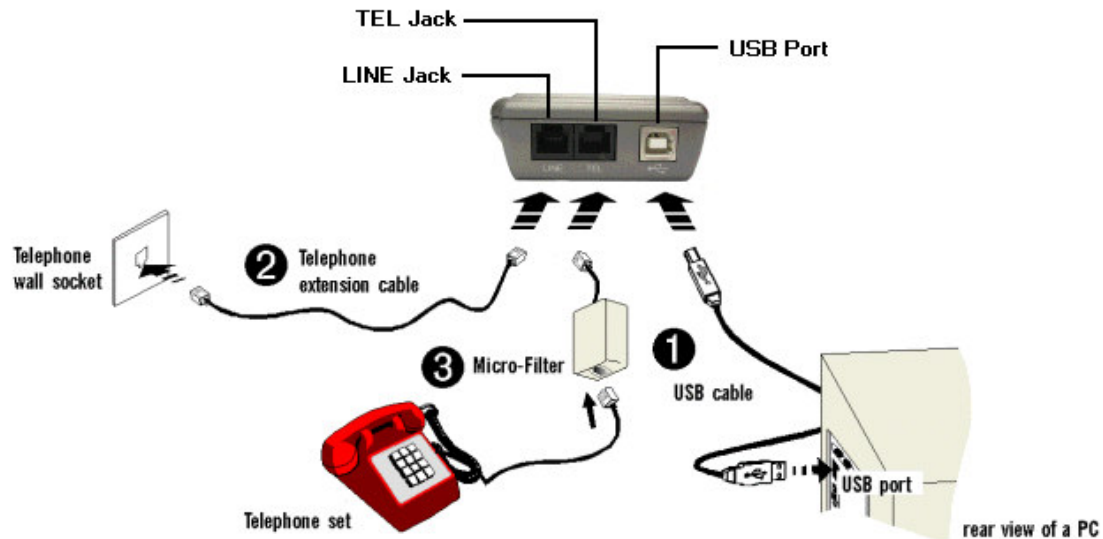
Power : **Lights up** when power is supplied via the USB port from your PC;

ADSL : **Lights up** when the ADSL line is established;

Data : **Blinks** when the modem is transmitting/receiving data.

You may setup your Modem using **Plug-&Play method** (see the section, '**Setting Up Your ADSL USB Modem using Plug-&Play**') OR with **Setup method** (see the section, '**Setting Up Your ADSL USB Modem with Setup**').

Setting Up Your ADSL USB Modem Using Plug-&-Play



1. Connect one end of the **USB cable** (🔌) to the **USB Port** on the **Modem** and the other end (🔌) to the **USB port** on your computer.
2. Connect one end of the **telephone extension cable** to the **Line Jack** on the **modem** and the other end to a **telephone wall socket**.
3. Connect a **Micro-Filter**² to the **TEL Jack** on the modem and then connect your **Telephone Set** to the Micro-Filter. (The connection to the telephone set is optional. The Micro-Filter is not required if you are not connecting to a Telephone Set).

2 *For details on the usage of the Micro-Filter, please refer to the Frequently Asked Questions & Troubleshooting Guide 'Do I need to use a Micro-Filter when using ADSL?' on your Installation CD.*

- i Power on your computer (if it is not powered on).
- ii Windows will detect your new modem device as USB device. Place the **Installation CD** on your CD-ROM Drive.
- iii Click on the selections as indicated on the following screen shots.

For Windows® 98 / 98 SE



Select **Search for the best driver for your Device (Recommended)** and click **Next**.



Select **Specify a location** and click **Browse** to navigate to the **Installation CD** (the example assumed that your CD-ROM drive is D). Click **Next** to continue.

For Windows® Me



Select **Specify the location of the driver (Advanced)** option and click **Next**.



Select **Specify a location** and click **Browse** to navigate to the **Installation CD** (the example assumed that your CD-ROM drive is D). Click **Next** to continue.

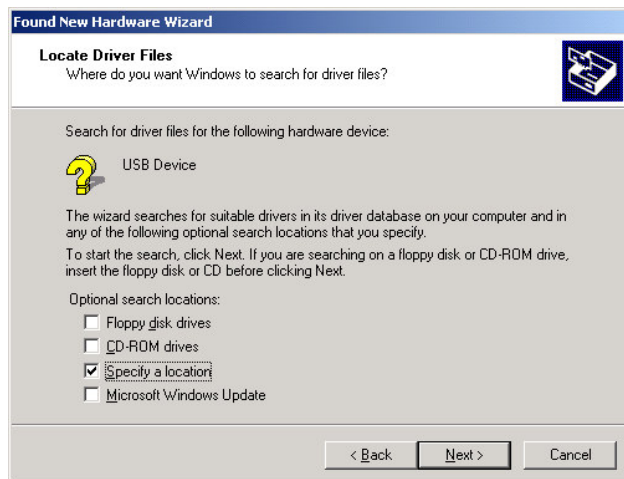
For Windows® 2000



For Windows® 2000 (cont'd)



Select **Search for a suitable driver for my device (recommended)** option and click **Next**.



Select **Specify a location** and click **Next** to continue.

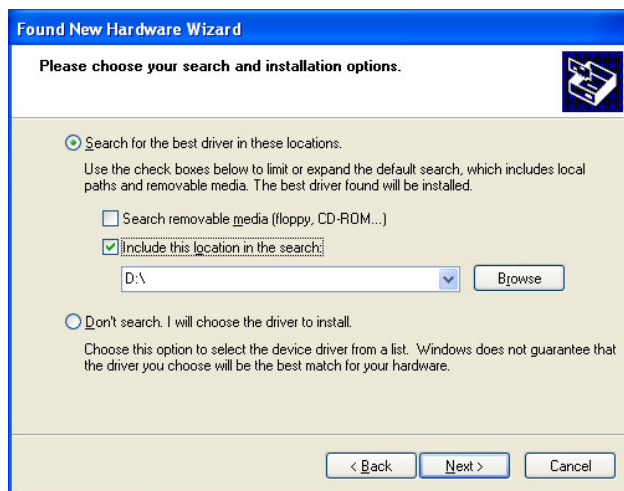


Click **Browse** to navigate to the **Installation CD** (the example assumed that your CD-ROM drive is D).

For Windows® XP



Select **Install from a list or specific location (Advanced)** option and click **Next**.

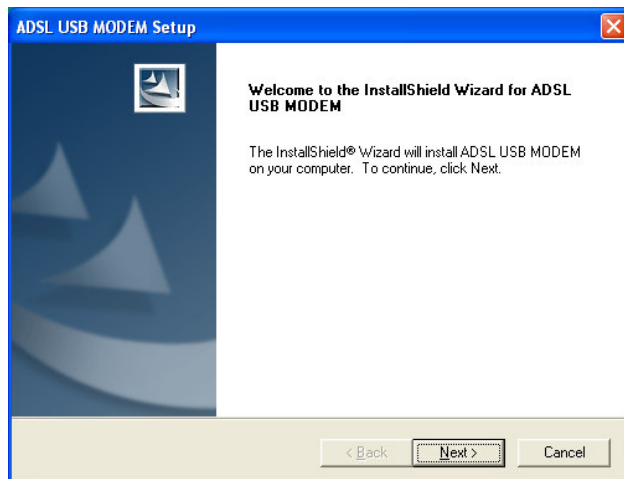


Select **Include this location in the search** and click **Browse** to navigate to the **Installation CD** (the example assumed that your CD-ROM drive is D). Click **Next** to continue.

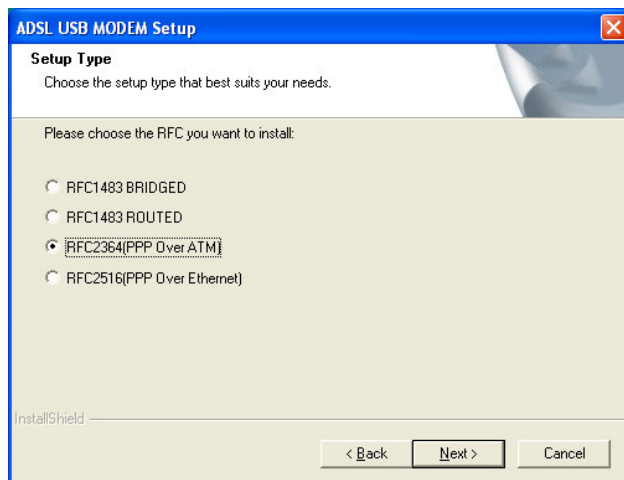
- iv Proceed installation as described in **step iii** of '**Setting Up Your ADSL USB Modem with Setup**' on the following page.

Setting Up Your ADSL USB Modem Using Setup

- i Power on your computer.
- ii Place the **Installation CD** on your CD-ROM Drive. If the **Installation CD** does not start automatically, please run the **setup.exe** program located in the **Installation CD**.
- iii You will be prompted the following installation window. Click **Next** to proceed with the modem driver setup.

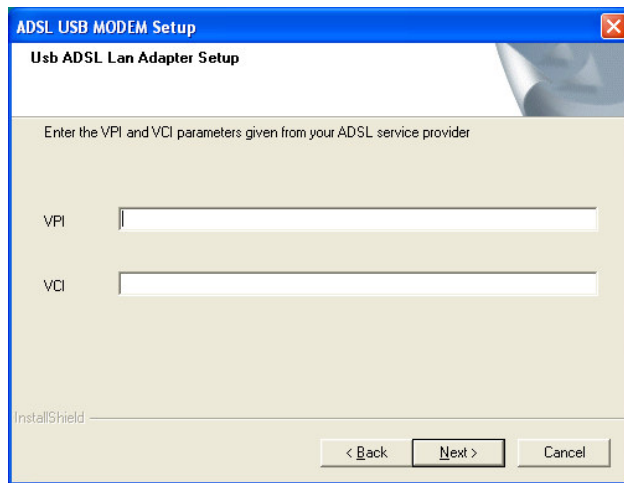


- iv Select the option as determined by your ADSL Service Provider and click **Next**.

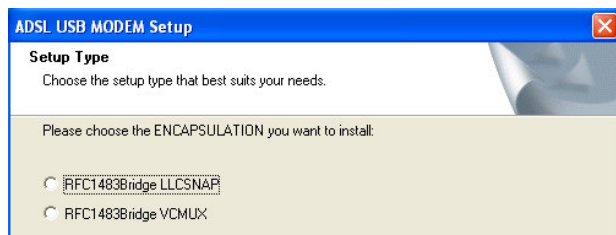


(Make sure that you select only one option as determined by your ADSL Service Provider. This screen shot uses **RFC2364** as an example)

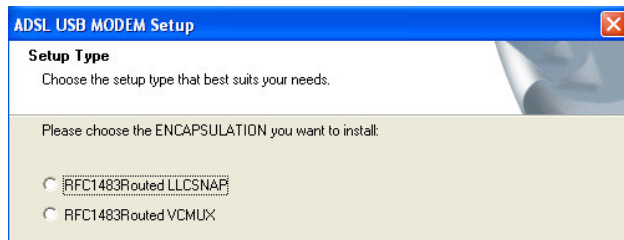
- v Enter the VPI and VCI parameters as given by your ADSL Service Provider and click **Next**.



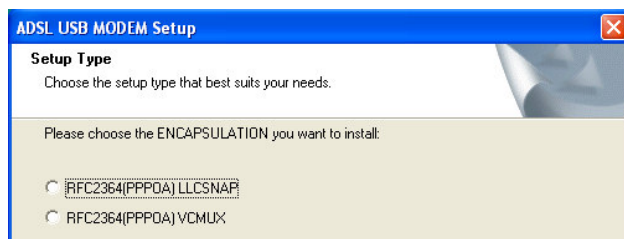
- vi Depending on the option that you have selected in **step iv**, you should see one of the following windows. Select the required encapsulation option and click **Next**.



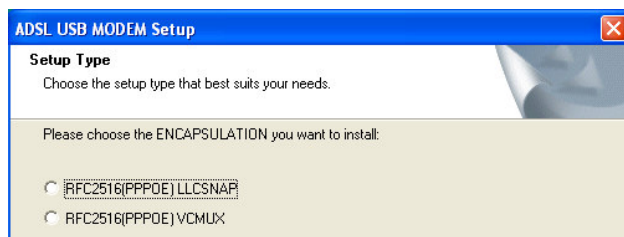
For RFC 1483 Bridge



For RFC 1483 Routed

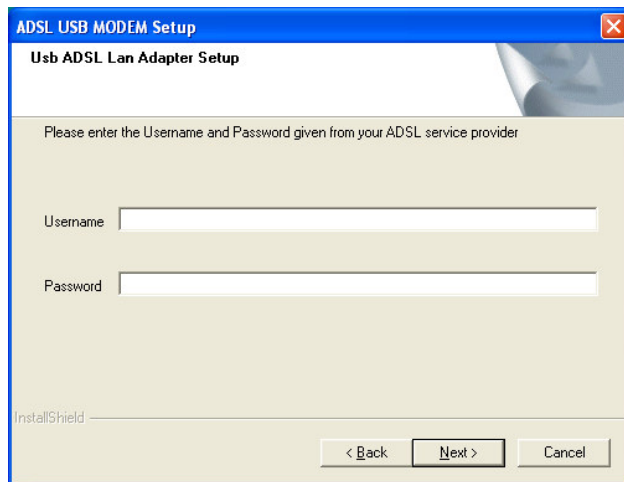


For RFC 2364 (PPPOA)

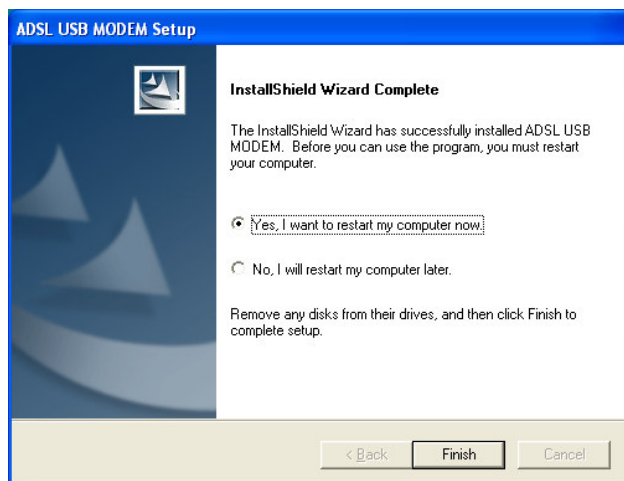


For RFC 2516 (PPPOE)

- vii For **RFC 1483 Bridged** and **RFC1483 Routed** users, please proceed to **step viii**. For **RFC2364** and **RFC2516** users, you will be prompted for your **username** and **password**. Enter the information exactly as given by your ADSL Service Provider and click **Next**.



- viii Allow sufficient time for Windows to copy the required files. At the prompt, click **Finish** to restart your computer.



- ix (This step is not applicable for 'Setting Up Your ADSL USB Modem Using Plug-&-Play' method).
After the system has rebooted, click **OK** at the **USB Warning**. Please carry out the connections as illustrated on **Page 4**.

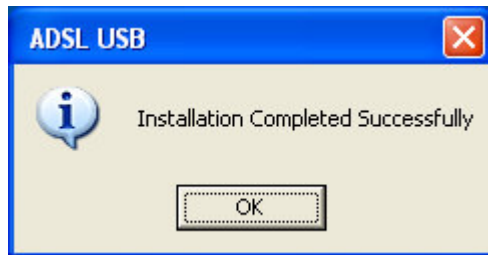


- x For **Windows® 98 / 98 SE** users, you may be prompted for your Windows CD-ROM. Replace the **Installation CD** on your CD-ROM drive with the **Windows 98 / 98 SE** CD-ROM.

In the text box, enter the path (example **D:\win98**, the example assumed that your CD-ROM drive is D) of your Windows CD-ROM and click **OK**.

For **Windows® XP** and **Windows® 2000** users, you may be prompted for digital signature. Just click **Continue Anyway** or **Yes** to continue with the installation.

- xi The below will be prompted when the driver installation is completed successfully. Click **OK** to end.



Macintosh Drivers Installation

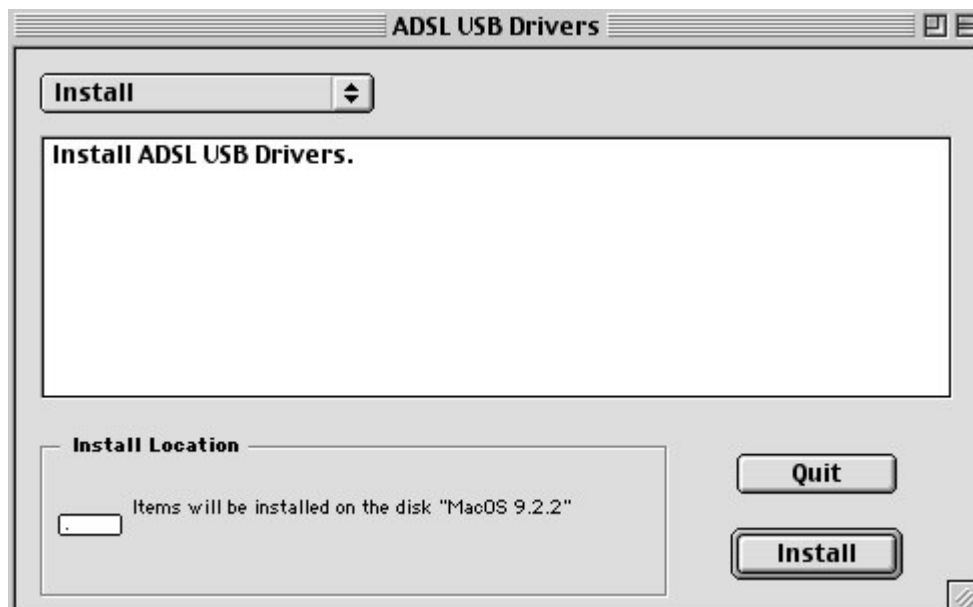
For Mac OS 8.6 / OS 9.X

- i Copy the **MacOS9.sit** from the **Mac OS9** folder in the installation CD and then place it onto the desktop. Double-click on the **MacOS9.sit** file and a folder named **Package** will appear on the desktop.
- ii Double-click the **ADI USB ADSL Classic** icon in the **Package** folder.

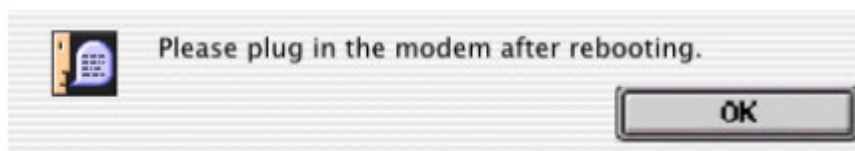


ADI USB ADSL Classic

- iii Click **Install**.



- iv Click **OK**. Do not plug in the USB modem until the machine has rebooted.



- v Click **Restart**. Plug in the USB modem after the machine has rebooted.

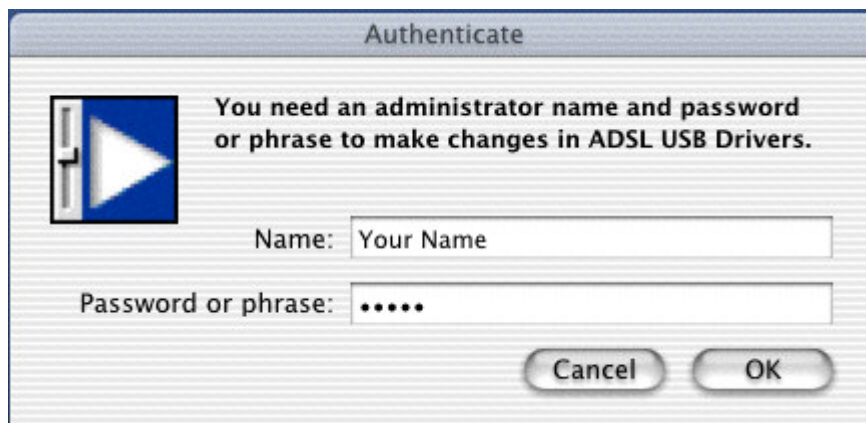


For Mac OS 10.X

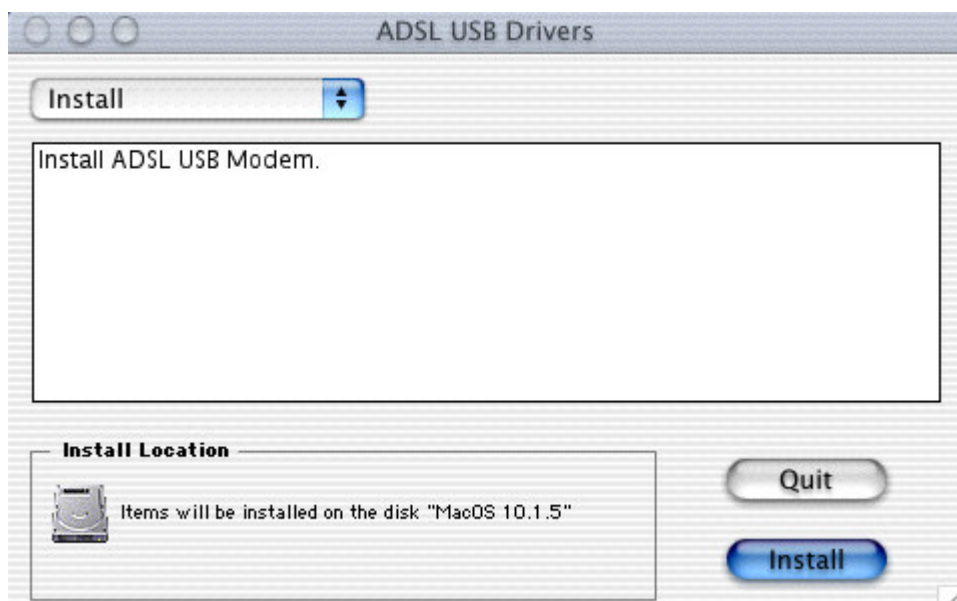
- i Copy the **MacOSX.sit** from the **Mac OSX** folder in the installation CD and then place it onto the desktop. Double-click on the **MacOSX.sit** file and a folder named **Package** will appear on the desktop.
- ii Double-click the **ADI USB ADSL OSX** icon in the **Package** folder.



- iii A Macintosh Administrator authentication window will be prompted. Enter your administrator login **Name** and **Password or phrase** and click **OK**.



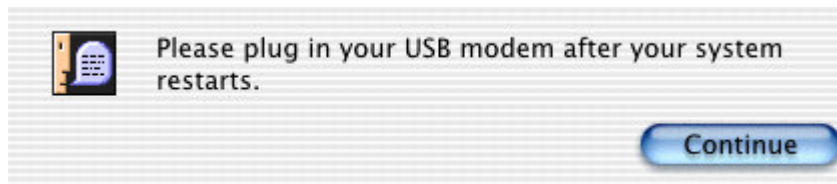
- iv After successful authentication, the below window will be prompted. Click **Install**.



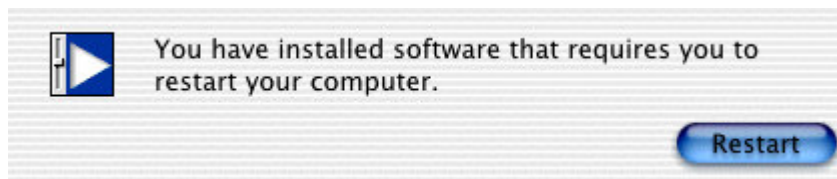
- v Please save your work and close all other programs. Then click **Continue**.



- vi Click Continue when the below window is prompted. Do not plug in the USB modem until the machine has rebooted.



- vii Click Restart to reboot the system. Plug in the USB modem after the machine has rebooted.



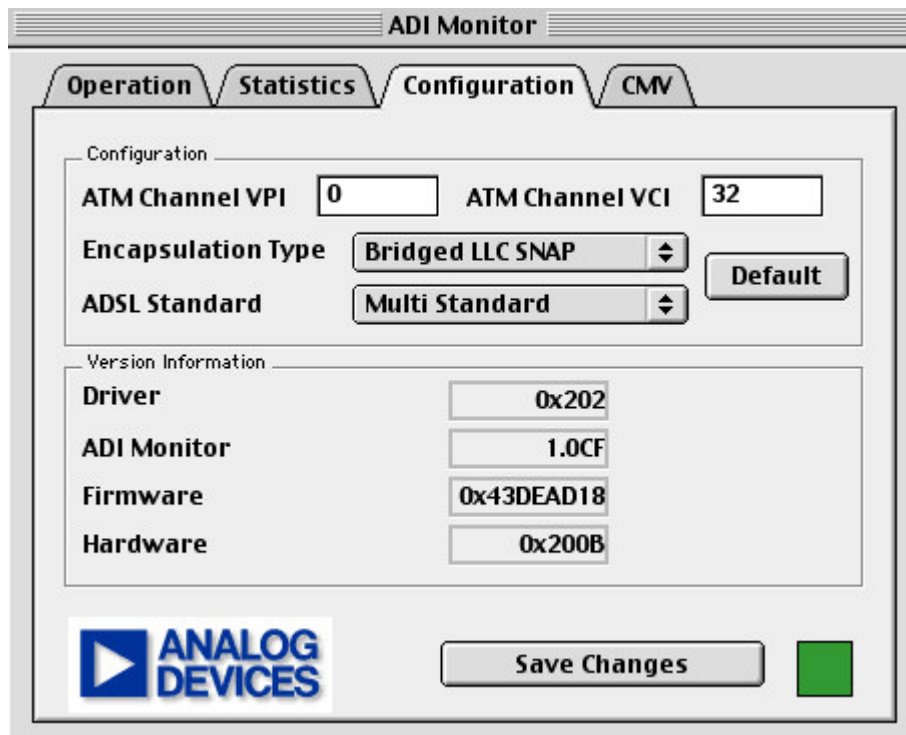
Configuring the Modem for Macintosh

For Mac OS 8.6 / OS 9.X

- i Locate the **ADSL Monitor** on the desktop.

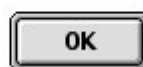


- ii Double click on the **ADSL Monitor** and select the **Configuration** tab.



- iii You can change the **VPI/VCI** values, the **Encapsulation Type** (drop down menu) and **ADSL Standard** (drop down menu) as given by your ADSL Service Provider.
- iv After you have changed the settings, click on **Save Changes**. Then click OK and restart the system for the changes to take effect.

You must restart to apply the changes.

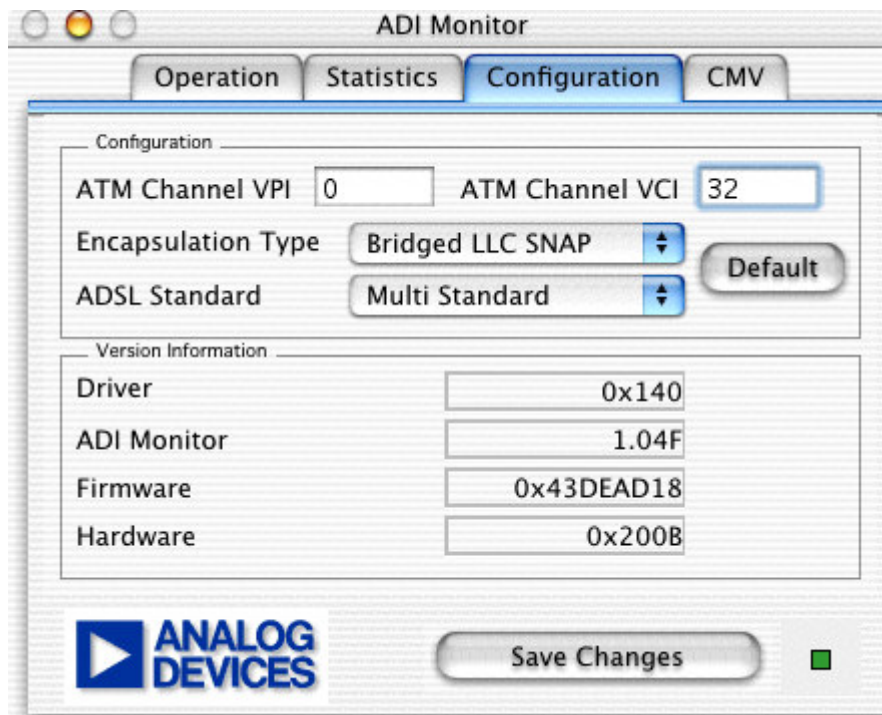


For Mac OS 10.X

- i Locate the **ADSL Monitor** on the desktop. (You may also locate it in the Dock).



- ii Double click on the **ADSL Monitor** and select the **Configuration** tab.



- iii You can change the **VPI/VCI** values, the **Encapsulation Type** (drop down menu) and **ADSL Standard** (drop down menu) as given by your ADSL Service Provider.
- iv After you have changed the settings, click on **Save Changes**. Then click OK and restart the system for the changes to take effect.

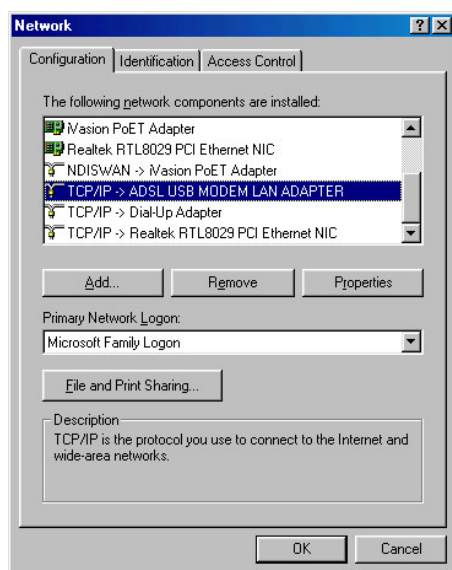
You must restart to apply the changes.

OK

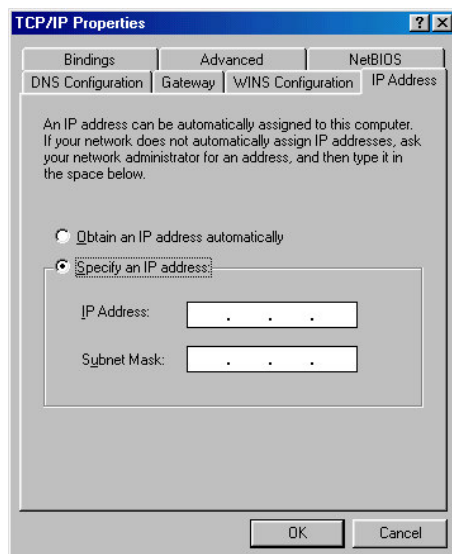
Configuring the IP Settings (For RFC 1483 Routed users only)

Configuring the IP Settings - For Windows® Me / Windows® 98 / 98 SE

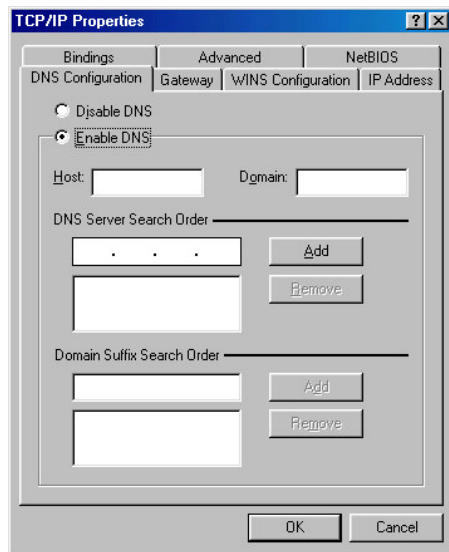
- i From your Windows desktop, right-click on the **Network Neighborhood** icon. Select **Properties**.
- ii From the **Configuration** tab, select **TCP/IP → ADSL USB MODEM LAN ADAPTER** and click **Properties**.



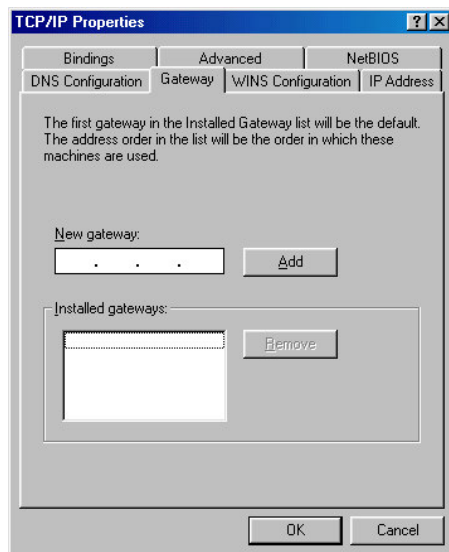
- iii Select the **IP Address** tab and then click on **Specify an IP address**. Enter the addresses as given by your ADSL Service Provider.



- iv Select **DNS Configuration** tab and then click on **Enable DNS**. Enter the **Host** name. Enter the **DNS Server Search Order** addresses and click **Add**. (Values to be provided by your ADSL Service Provider)



- v Select the **Gateway** tab. Enter the **New Gateway** address assigned by your ADSL Service Provider and click **Add**.

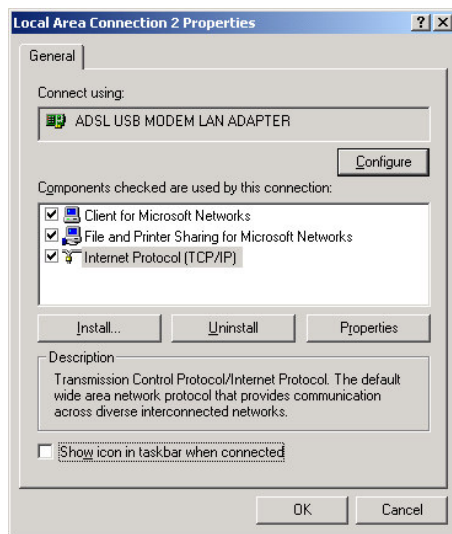


- vi After all the settings have been finished, click **OK**. Restart your system when prompted.

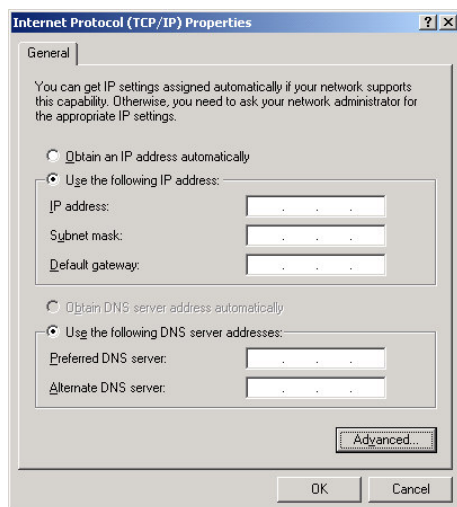
After the system has rebooted, you can start surfing the Internet by launching your Internet Browser.

Configuring the IP Settings - For Windows® 2000

- i From your Windows desktop, right-click on the icon **My Network Places**. Select **Properties**.
- ii At the **Network and Dial-up Connections** window, select the **Local Area Connection** that is belong to **ADSL USB MODEM LAN ADAPTER**. Then right-click on the **Local Area Connection** icon and select **Properties**.
- iii Ensure that the field **Connect Using** indicates **ADSL USB MODEM LAN ADAPTER**. (This verification is important as you may more than one Local Area Connection icons installed in your system). Select **Internet Protocol (TCP/IP)** and click **Properties**.



- iv Click **Use the following IP address**. Enter the addresses as given by your ADSL Service Provider. Click **Use the following DNS server addresses**. Enter the DNS server addresses as given by your ADSL Service Provider. Click **OK**. Click **OK** again to close.



You can start surfing the Internet by launching your Internet Browser.

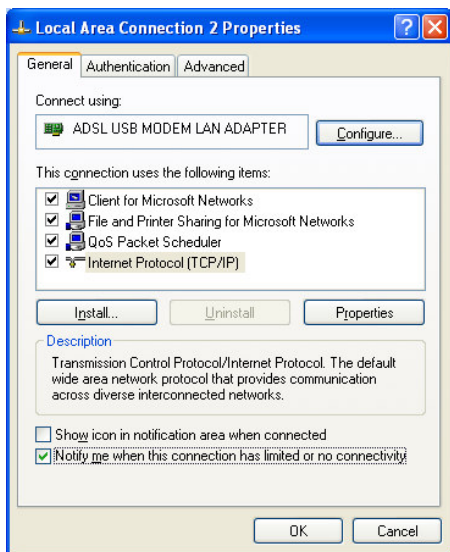
Configuring the IP Settings - For Windows® XP

(Instructions are based on default **Start menu** option)

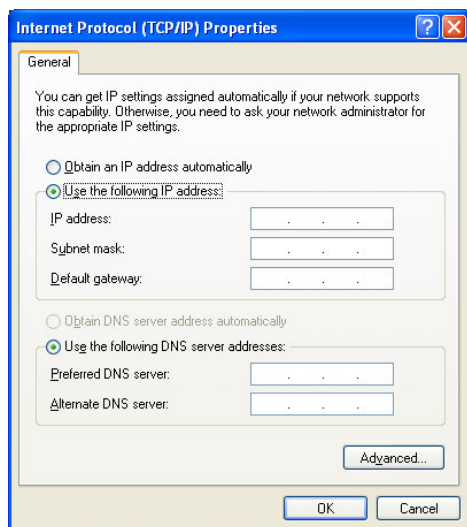
- i. From your Windows taskbar, click **Start > All Programs > Accessories > Communications > Network Connections**.
- ii. From **Other Places**, click **My Network Places**. Right-click on the **LAN Area Connection** and select **Properties**.
- iii. Ensure that the field **Connect Using** indicates **ADSL USB MODEM LAN ADAPTER**.

(This verification is important as you may have more than one Local Area Connection icons installed in your system).

Select **Internet Protocol (TCP/IP)** and click **Properties**.




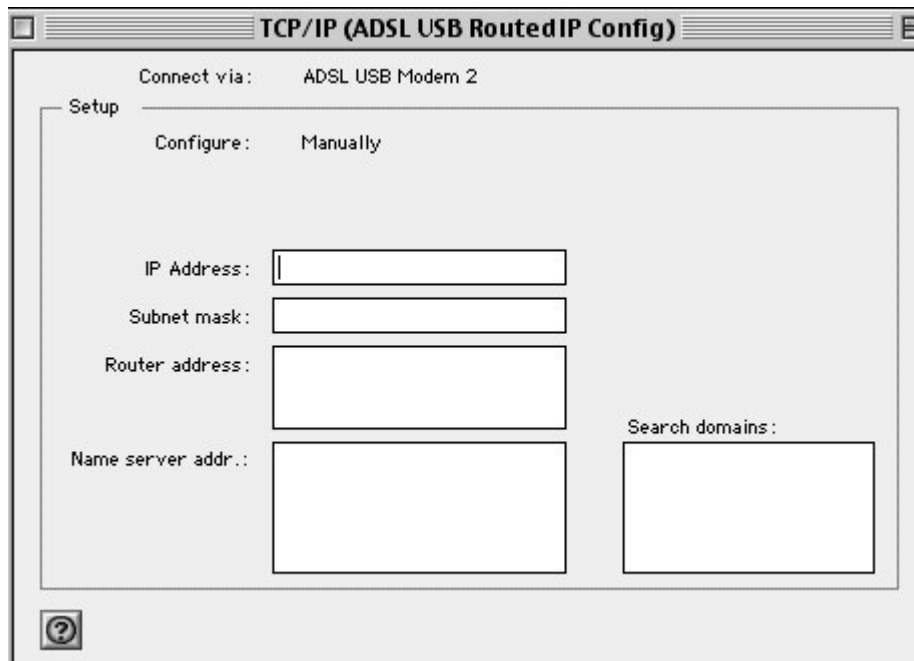
- iv Click **Use the following IP address**. Enter the addresses as given by your ADSL Service Provider. Click **Use the following DNS server addresses**. Enter the DNS server addresses as given by your ADSL Service Provider. Click **OK**. Click **OK** again to close.



You can start surfing the Internet by launching your Internet Browser.

Configuring the IP Settings - For Mac OS 8.6 / OS 9.X

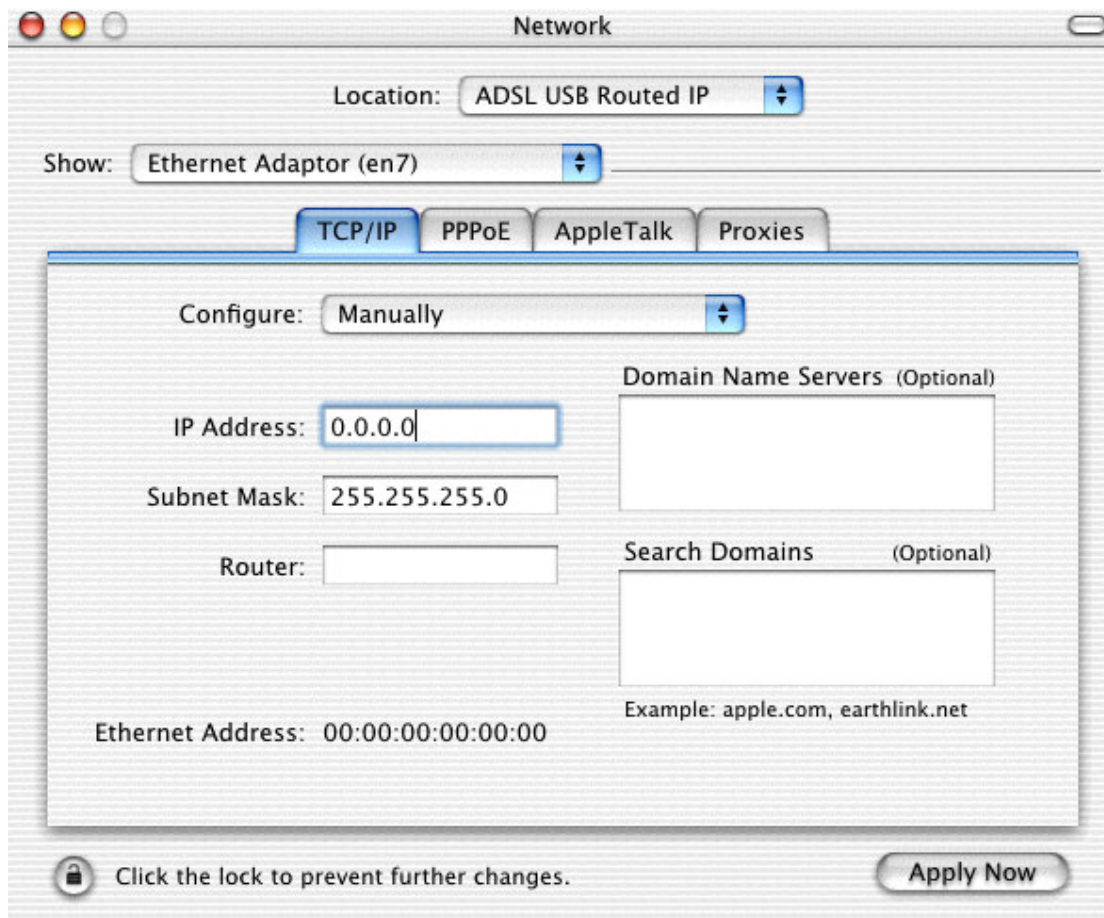
- i Click on the **Apple** icon  and then select **Control Panels > TCP/IP**.
- ii Ensure that the **Connect via** is **ADSL USB Modem** and the **Configure** is **Manually**.
- iii Enter the **IP Address**, **Subnet Mask**, **Router address** (Gateway) and the **Name Server addr** (DNS) as given by your ADSL Service Provider.
- iv Click **Apply Now** and then close the **Network** screen.



Configuring the IP Settings - For Mac OS 10.X

- i Go to **System Preferences** and then select **Network**.
- ii Select the name with **ADSL USB Routed IP** for **Location**.
- iii Select the latest installed **Ethernet Adapter (enX)** for **Show**.
- iv Select the **TCP/IP** tab and select **Manually** for **Configure**.
- v Enter the **IP Address**, **Subnet Mask**, **Router** (Gateway) and the **Domain Name Servers** (DNS) as given by your ADSL Service Provider.

- vi Click **Apply Now** and then close the **Network** screen.



You can start surfing the Internet by launching your Internet Browser.


Dial-Up to the Internet **(for RFC 2364 and RFC 2516 users)**

For Windows 98 SE / ME / 2000 / XP




For RFC 1483 Bridge users, please install a third-party dial-up utility for your modem as required by your ADSL Service Provider.

- i. To connect to the Internet, double-click on the shortcut icon **ADSL USB Modem dial-up** on your Windows desktop.
(The shortcut icon was created when you have installed the modem driver successfully).
- ii. Click Connect.

- iii. Upon successful dial-up, you should be able to see an icon  displayed on your Windows system tray. Double-click on the icon.
Duration indicates the amount of time you are connected to the Internet. You may click **Disconnect** to end your session.

If you are not able to connect to the Internet, please refer to the **Frequently Asked Questions & Troubleshooting Guide**, 'I am not able to connect to the Internet.' on your Installation CD.

For Mac OS 8.6 / OS 9.X

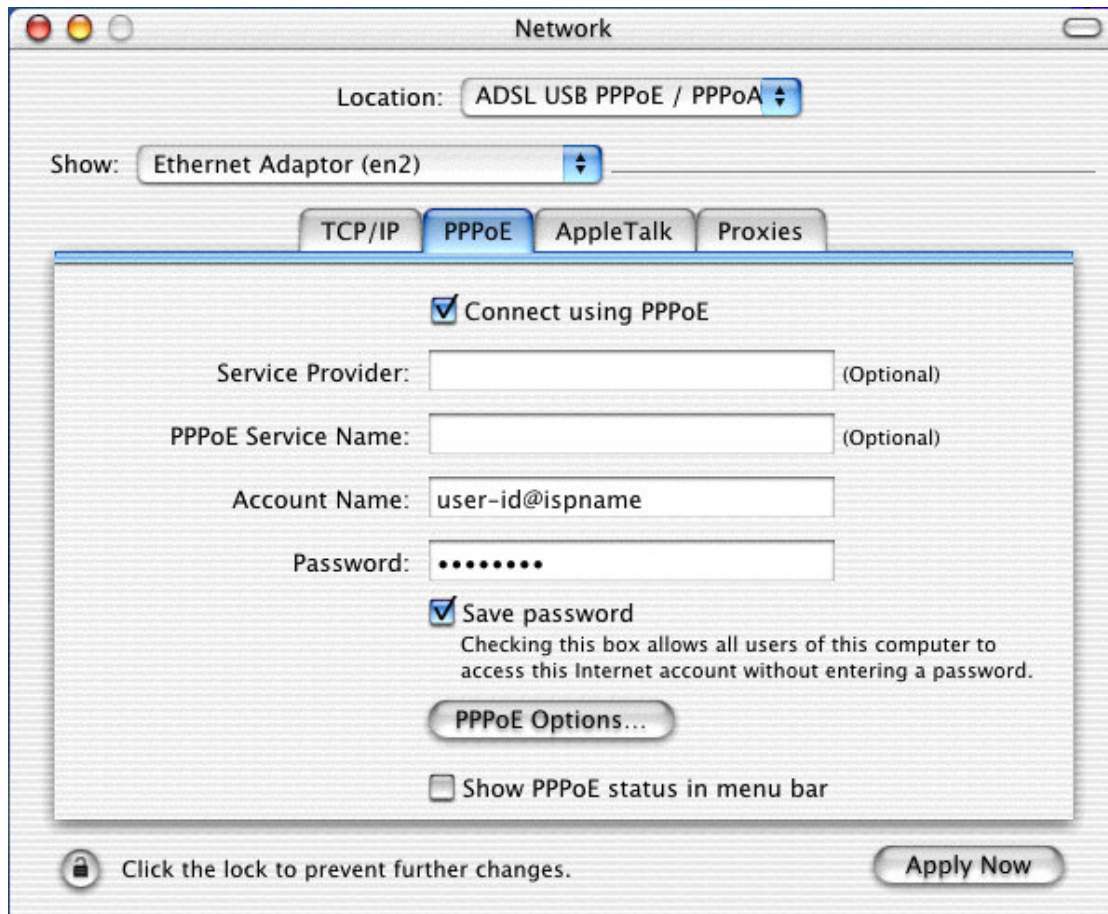
- i Click on the **Apple** icon  and then select **Control Panels > Remote Access**.
- ii Enter your [user-id@ispname](#) and **password** as given by your ADSL Service Provider Click Connect. (Though the **Number** field is not required, it should not leave blank. You may enter a 0 for the field).



For Mac OS 10.1 / OS 10.2

- i Go to **System Preferences** and then select **Network**.
- ii Select the name with **ADSL USB PPPoE / PPPoA** for **Location**.
- iii Select the latest installed **Ethernet Adapter (enX)** for **Show**.
- iv Select the **PPPoE** tab. If **Connect using PPPoE** is not checked, select it.
- v Enter your [user-id@ispname](#) and **password** as given by your ADSL Service Provider.

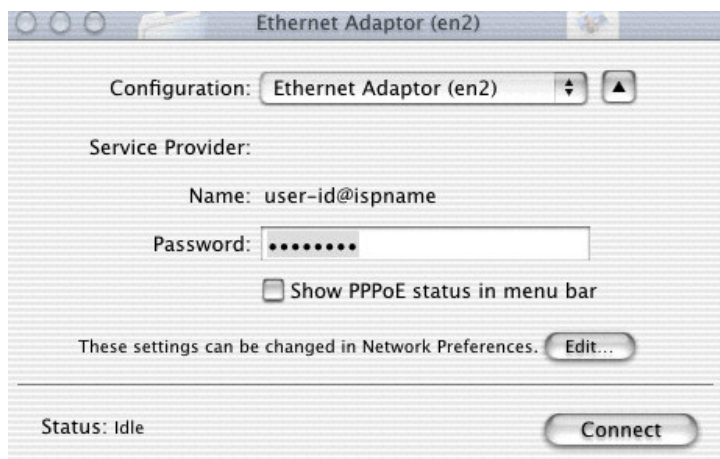
- vi Click **Apply Now**. (This will update username and password in Internet Connect dialog). Then close the **Network** screen.



- vii Double click **Internet Connect** icon on the **Dock**.

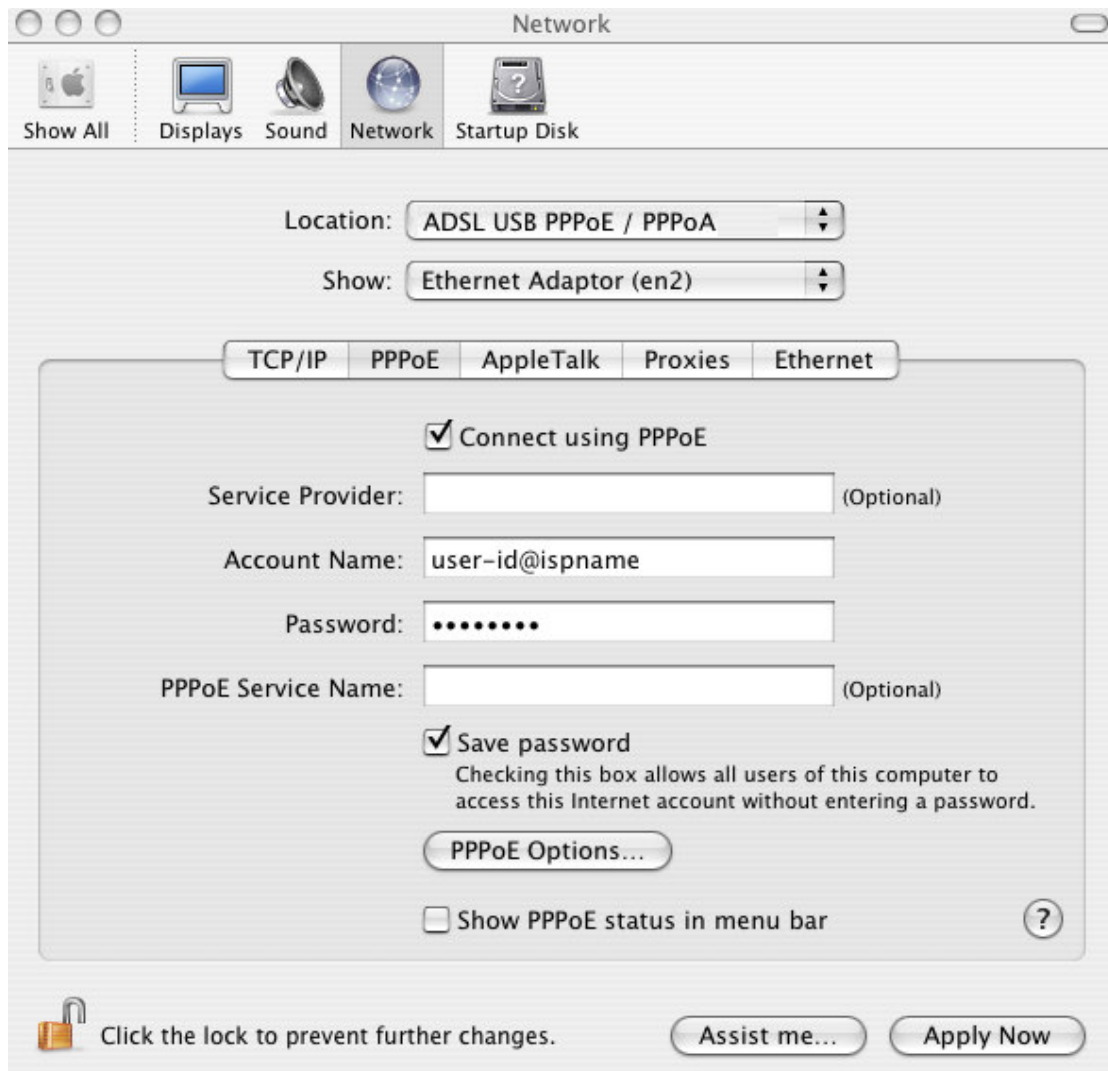


- viii The below window will be prompted. Click Connect.



For Mac OS 10.3

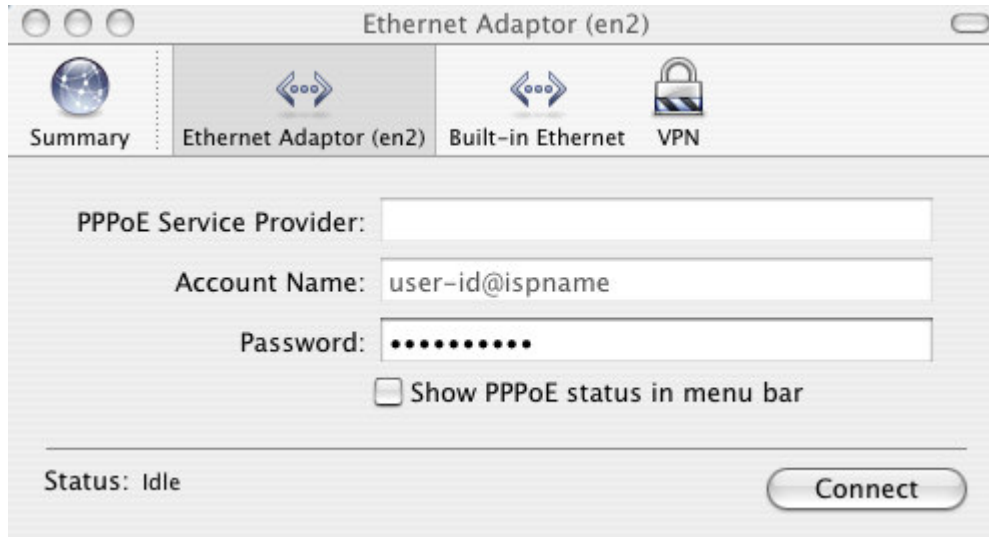
- i Go to **System Preferences** and then select **Network**.
- ii Select the name with **ADSL USB PPPoE / PPPoA** for **Location**.
- iii Select the latest installed **Ethernet Adapter (enX)** for **Show**.
- iv Select the **PPPoE** tab. If **Connect using PPPoE** is not checked, select it.
- v Enter your [user-id@ispname](#) and **password** as given by your ADSL Service Provider.
- vi Click **Apply Now**. (This will update username and password in Internet Connect dialog). Then close the **Network** screen.



- vii Double click **Internet Connect** icon on the **Dock**.



- viii The below window will be prompted. Click **Connect**.



Uninstalling The Modem Driver

For Windows 98 SE / ME / 2000 / XP

- i To remove your modem driver, click **Start > Programs > ADSL USB Modem > Uninstall**.
- ii At the prompt for restart, remove the USB cable connection and the restart your system.

Alternatively, you may remove your modem driver from the **Control Panel** (Start > Settings). Double-click on the **Add/Remove Programs** and then select **ADSL USB Modem**. Click **Remove** to uninstall the modem driver. Follow all the on-screen instructions to complete the uninstallation.

For Mac OS 8.6 / OS 9.X / OS 10.X

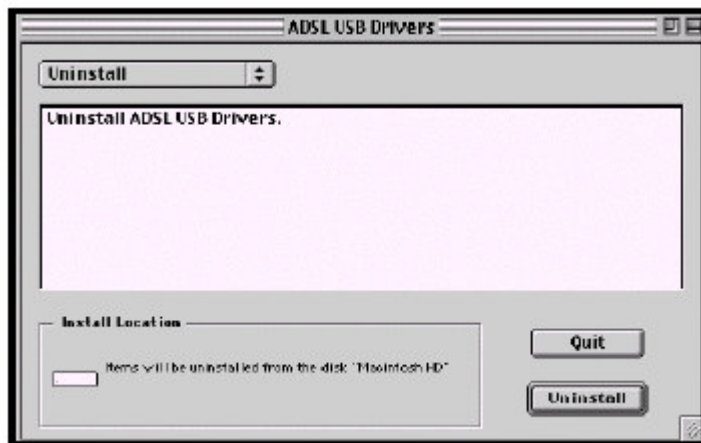
- i Double-click the **ADI USB ADSL OSX** icon OR the **ADI USB ADSL Classic** icon in the **Package** folder on the desktop.



- ii For Mac OS 10.X, a Macintosh Administrator authentication window will be prompted. Enter your administrator login **Name** and **Password or phrase** and click **OK**.



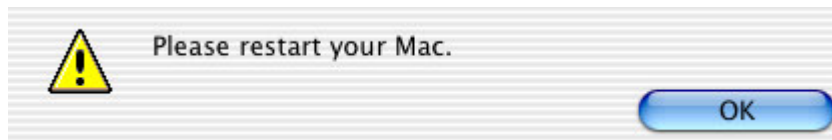
- iii Choose **Uninstall** in the menu at the top left and then click **Uninstall** at the bottom right.



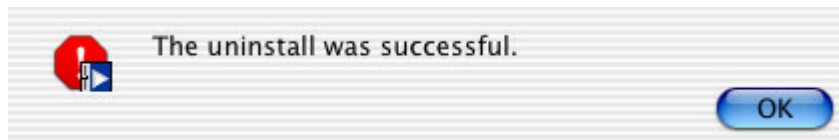
- iv Please save your work and close all other programs. Then click **Continue**.



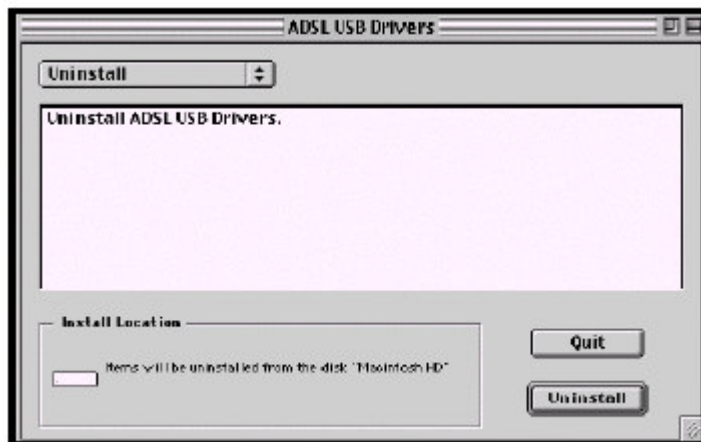
- v Click **OK**.



- vi Click **OK**.



- vii Click **Quit**.



- viii Please restart the system and plug out the USB modem.

All other company or product names are trademarks or registered trademarks or service marks of their respective owners.