

DSL300P

ADSL Modem Card

Easy Start

Read Me First

Version 0.61

- Windows® 98 Second Edition and Windows® 2000 are registered trademarks of Microsoft Corp.
- All other company or product names are trademarks or registered trademarks or service marks of their respective owners.

Product warranty does not apply to damage caused by lightning, power surges or wrong voltage usage.

About this Easy Start

This booklet contains information on setting up the ADSL modem card *DSL300P*. It touches on the key installation procedures to help you setup your modem in a breeze!

Installation Notes

- The graphics and screens illustrations shown in this easy start may differ from what you see from your system, but the steps still apply.
- A Philips Screwdriver is required for the card installation.
- The documentation for your computer should come in handy during the card installation. Have it ready by your side.
- It is recommended that any existing modem card be removed before installing your new modem card.

Safety Precaution

- Do not remove your card from its protective bag until you are ready to install it.
- Always try to hold your card by its edges. Avoid touching any electronic components on your card.
- Static electricity can cause permanent damage to your card. To prevent such a damage, you must ground yourself while installing the card:
 - » Use a grounding strap, which is a coiled wire with a clip at one end and an elastic strap at the other. Wear the strap around your wrist and attach the clip to any non-painted metal surface of the computer's chassis. OR
 - » If you do not have a grounding strap, touch any non-painted surface of the computer's chassis before you begin installation, and again every minute or so until the installation is completed.

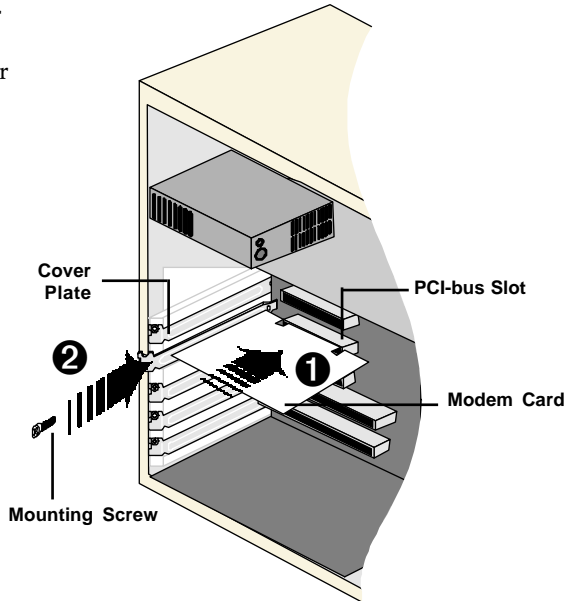


Power off your computer and any connected devices before connecting your modem card!

Installing the Modem Card

After removing the cover of your computer, locate any available PCI-Bus slot and remove its cover plate.

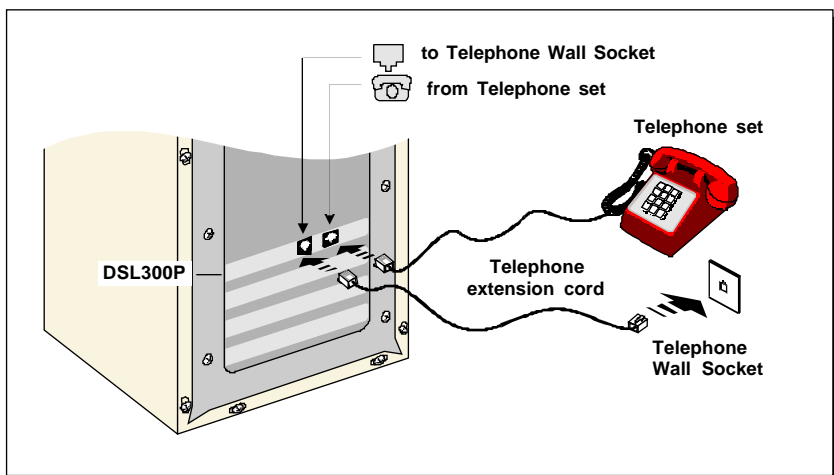
1. Insert the modem card firmly into the PCI-Bus slot.
2. Secure the modem card with the mounting screw and replace the cover of your computer.



Connecting the Modem Card



The connection for the **Telephone set** is **optional**. The **Phone** jack provides convenience to users who share the same telephone point for the modem and the telephone set.



Installing the Modem Drivers in Windows® 98 Second Edition (SE)



Have the **Windows Installation CD** ready during installation, as it may be required.

Depending on the protocol you use, there are 2 sets of drivers provided in the Installation CD. If you are using the **RFC1483 protocol**, the drivers are found in the **LAN** directory. If you are using the **RFC2364 protocol**, the drivers are found in the **WAN** directory. **The following screen shots shows the RFC2364 protocol being used.**

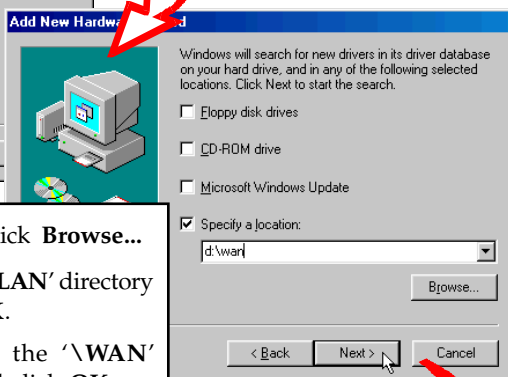
1. Power on your computer to start Windows. It will detect the newly-installed modem card and prompt for its drivers.

Place the **DSL300P Installation CD** into your CD-ROM drive and click **Next**.

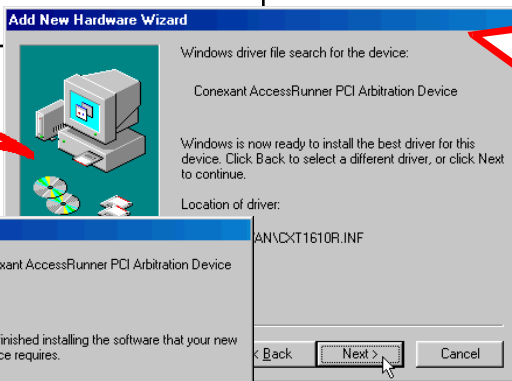




2. Click the option "Search for the best driver for your device. (Recommended)." and click **Next**.

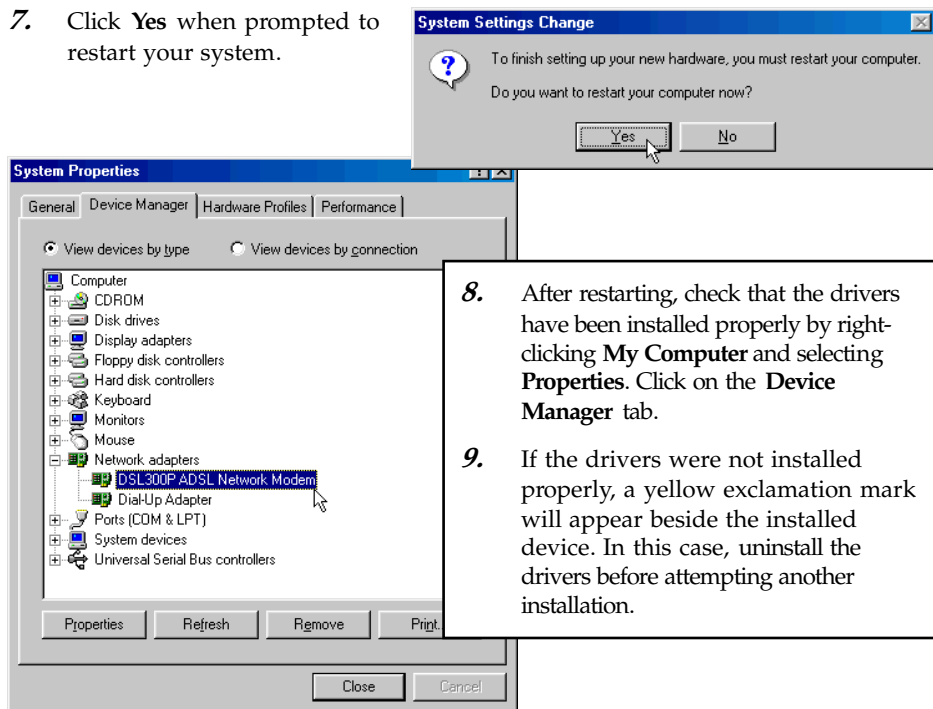


3. Select **Specify a location** and click **Browse...**
- For LAN users**, navigate to the '\LAN' directory on your CD-ROM and click **OK**.
- For WAN users**, navigate to the '\WAN' directory on your CD-ROM and click **OK**.
- Click **Next**.



4. Click **Next** again to proceed with installation of the driver found.
5. Click **Finish** when Windows has finished installing the driver.

6. When prompted for the Windows® 98 SE CD, remove the Installation CD in your CD-ROM drive and replace with your Windows CD.
7. Click **Yes** when prompted to restart your system.



8. After restarting, check that the drivers have been installed properly by right-clicking **My Computer** and selecting **Properties**. Click on the **Device Manager** tab.
9. If the drivers were not installed properly, a yellow exclamation mark will appear beside the installed device. In this case, uninstall the drivers before attempting another installation.

10. Proceed to set the Virtual Circuit Identification in order to establish an ADSL connection.

Installing the Modem Drivers in Windows® 2000



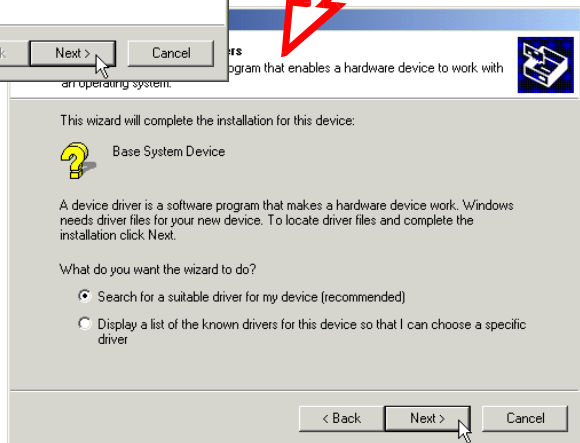
Depending on the protocol you use, there are 2 sets of drivers provided in the Installation CD. If you are using the **RFC1483 protocol**, the drivers are found in the **LAN** directory. If you are using the **RFC2364 protocol**, the drivers are found in the **WAN** directory. **The following screen shots are taken from the RFC1483 protocol.**

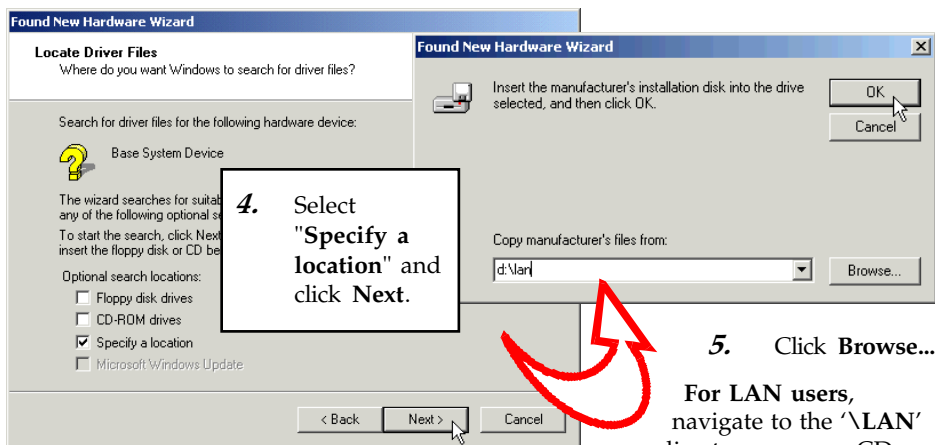
1. Power on your computer to start Windows. It will detect the newly-installed modem card and prompt for its drivers.



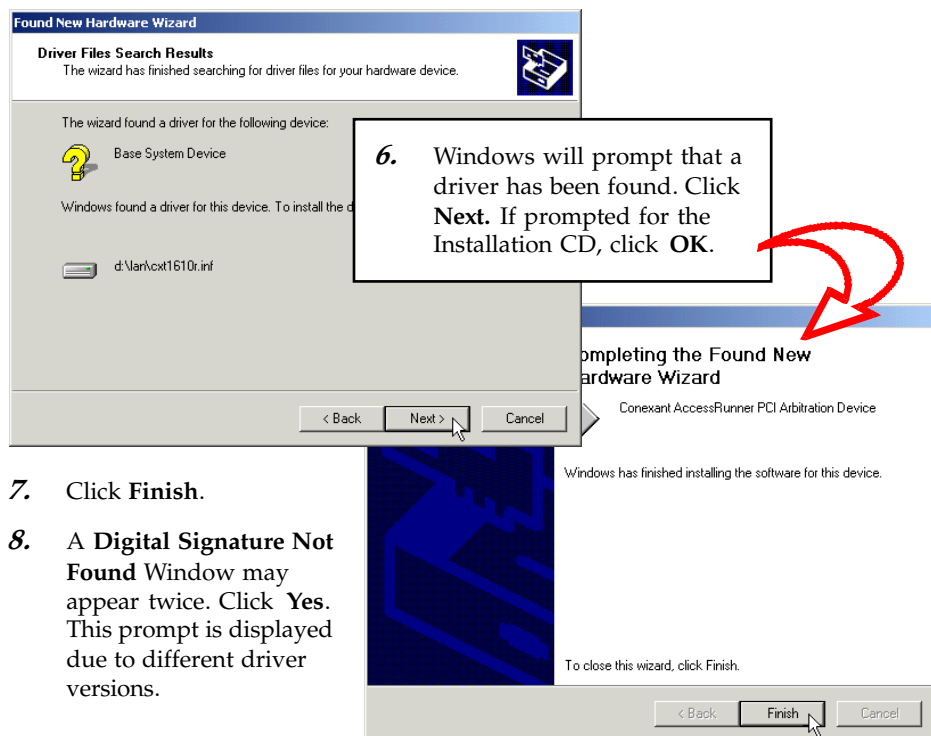
2. Place the **DSL300P Installation CD** into your CD-ROM drive and click **Next**.

3. Select "Search for a suitable driver for my device (recommended)" and click **Next**.



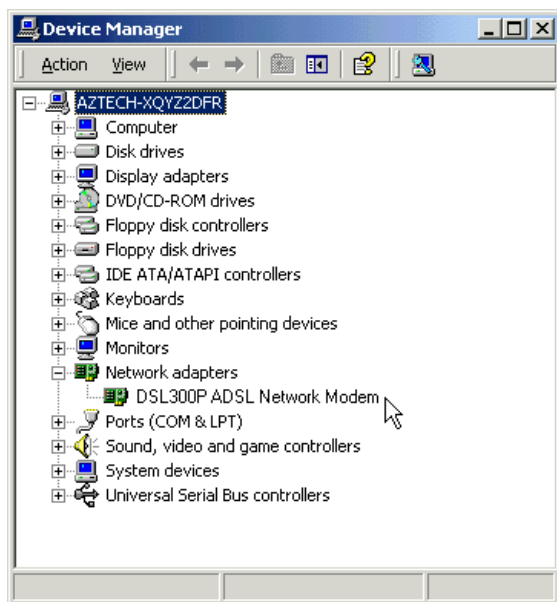


For WAN users, navigate to the '\WAN' directory on your CD-ROM and click OK.



7. Click **Finish**.
8. A **Digital Signature Not Found** Window may appear twice. Click **Yes**. This prompt is displayed due to different driver versions.

9. To verify that the drivers have been installed properly, right-click **My Computer** and select **Properties**. Click on the **Hardware** tab and then **Device Manager...** If the drivers were not installed properly, a yellow exclamation mark will appear beside the installed device. In this case, uninstall the drivers before attempting another installation.



10. Proceed to set the Virtual Circuit Identification in order to establish an ADSL connection.

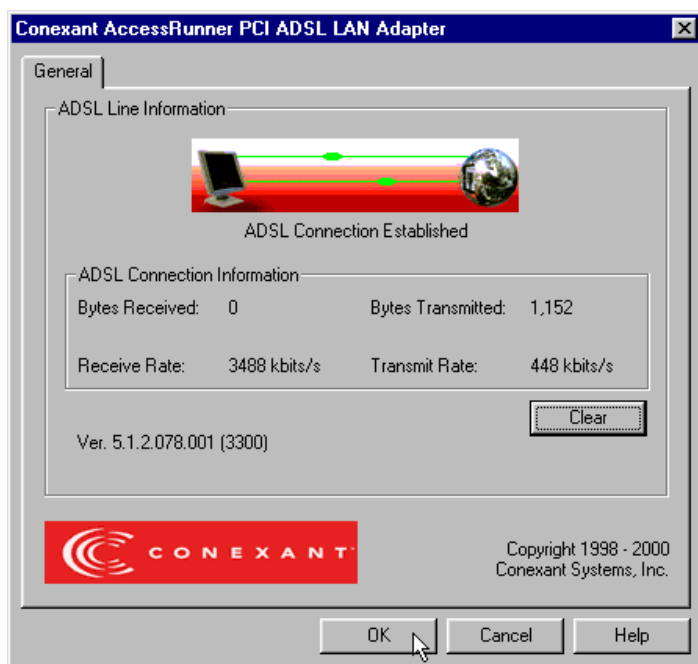
Monitoring the ADSL Line / Setting the Virtual Circuit Identification

To set the Virtual Path Identifier (VPI) and the Virtual Connection Identifier (VCI) and monitor the ADSL line, double-click on the **Conexant AccessRunner ADSL**

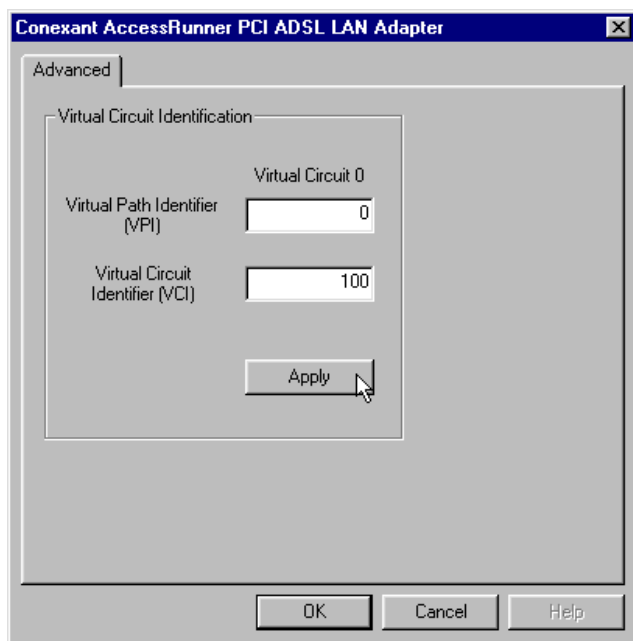


icon in the **Control Panel**.

Under the **General** tab, the **ADSL Line Information** shows the status of the line. When the connection is established, information such as the numbers and rates of bytes received/transmitted are displayed.



To set the Virtual Path Identifier (VPI) and the Virtual Connection Identifier (VCI), press **Alt+C**. The **Advanced** tab is displayed. Set the values of the VPI's and VCI's Virtual Circuit 0 and then click **Apply** and **OK**.



You need to restart your system for the values to take effect!

Uninstalling the ADSL Modem Drivers in Windows® 98 SE/2000

1. From your Windows taskbar, click **Start** > **Settings** > **Control Panel**. Double-click



the (Add/Remove Programs) icon.

2. From the **Add/Remove Programs Properties** Window, under the **Install/Uninstall** tab, select **DSL300P ADSL Network Modem** and click **Add/Remove...** .
3. Follow the instructions to start the uninstallation.
4. Click the **OK** button on the **Add/Remove Programs Properties** Window.
5. Restart your system.