



DIGITAL MultiSwitch 612EX

Ethernet-to-Fast Ethernet switch to seamlessly integrate 10 Mb/s workgroups with 100 Mb/s networks and high-speed servers

The DIGITAL MultiSwitch™ 600 system integrates a complete range of 10 Mb/s and 100 Mb/s shared and switched Ethernet solutions to incrementally expand your network's performance and capabilities — all in a single platform. For high-speed connections from desktops to department servers or backbones, just stack on the MultiSwitch 612EX Ethernet-to-Fast Ethernet switch. This flexible, 10/100 switch is part of DIGITAL's enVISON networking architecture, enabling you to flexibly configure scalable networks for workgroups, departments and enterprise backbones without sacrificing prior investments.

The MultiSwitch 612EX includes 12 10BaseT ports and two modular media uplinks to 100BaseTX, FX, or 10BaseFL networks. The switch delivers wire-speed store-and-forward switching among Ethernet and Fast Ethernet ports at half and full-duplex operation, maximizing network utilization. The MultiSwitch 612EX also includes built-in monitoring capability to detect changes in network activity and respond to them quickly and easily. Standards-based Remote Monitoring (RMON) is provided on each port. In addition, intelligent frame processing enables network managers to automatically control switch traffic to ensure reliable performance, even under heavily loaded conditions. Support for up to 1000 network addresses ensures the MultiSwitch 612EX can be configured in both large and small LANs.



Improve network performance with Ethernet and Fast Ethernet switching

Benefits

Provides store-and-forward switching from 12 Ethernet ports to up to two Fast Ethernet ports through a mix of modular media interfaces — all with per-port security and control

Scales smoothly to support up to 192 switched 10BaseT ports across seven Ethernet backplane LANs — all in a single management domain

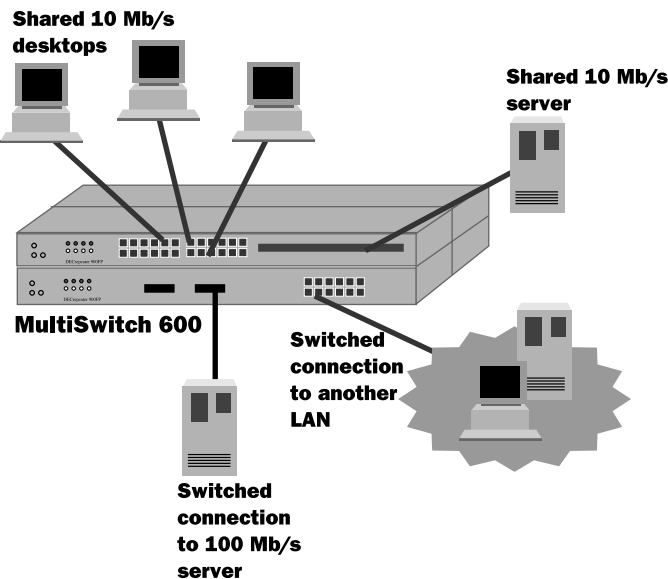
Increases performance by integrating Ethernet and Fast Ethernet hubs and switches in a single, stackable solution

Improves reliability and reduces configuration problems with unique cable-free stack interconnect for connectivity, LAN segmentation, and management

Protects investments by allowing each switch to be installed in standalone, stackable, or chassis-based configurations

Simplifies management with unique single IP address for all switches and hubs in a stack — all managed by clearVISN graphical SNMP software

Evolving from shared to switched LANs



Get Ethernet-to-Fast Ethernet switching in a snap

Here's a switch that lets you expand your network and boost performance without missing a beat. As bandwidth requirements increase, just stack up MultiSwitch 612EX switches with our other Ethernet and Fast Ethernet switches and hubs in the MultiSwitch 600 system. Up to eight modules — a total of 208 Ethernet and Fast Ethernet switch ports — can be stacked in seconds. Individual switch ports can, in turn, be assigned through software to one of seven Ethernet LANs that can be configured within the stack. DIGITAL's unique cable-free stack interconnect eliminates failures and simplifies configuration tasks associated with traditional, cable-based designs.

As a member of DIGITAL's MultiSwitch 600 product family, the MultiSwitch 612EX operates and is manageable in standalone, stackable, and chassis-based configurations for maximum design flexibility and investment protection. MultiSwitch 600 modules snap right into the DEChub™ 900 MultiSwitch chassis as part of multi-technology, multi-gigabit network solutions. And all MultiSwitch 600 modules are hot-swappable in stacks or chassis to deliver reliable network performance.

Manage your changing network with graphical SNMP software

Managing the MultiSwitch 612EX is easy. The MultiSwitch 600 Stack Director* provides built-in SNMP to manage an entire stack of up to eight switches and hubs as a single domain with just one IP address. Then use the DIGITAL clearVISN Stack Manager or clearVISN MultiChassis Manager applications to set switch filters, enable security, or dynamically assign ports to LAN segments by simply pointing and clicking. With clearVISN, you get a pictorial view of all the modules in the stack — whether managing in band or out of band — all on a low-cost PC platform.

Only one MultiSwitch 600 Stack Director needed per stack

Product specifications

<i>Height</i>	4.45 cm (1.75 in)
<i>Width</i>	44.45 cm (17.5 in)
<i>Depth</i>	15.25 cm (6.02 in)
<i>Weight</i>	1.40 kg (3.00 lb)*
<i>Temperature</i>	5°C to 50°C (41°F to 122°F)
<i>Relative humidity</i>	10% to 95% noncondensing
<i>Altitude</i>	Operating: Sea level to 2400 m (8000 ft) Non-operating: sea level to 4900 m (16000 ft)
<i>Power</i>	5.2V @ 3.7A 12.0V @ 80mA 15.0V @ 0.0A
<i>Certification</i>	CE, CSA, FCC, TÜV, UL, VCCI

Include additional 2.02 kg (4.45 lb) when attached to Stack Director
Include additional 1.80 kg (4.00 lb) when attached to Stack Station

Ordering information

DIGITAL Part Number	Description
DLMWL-MA	MultiSwitch 612EX Ethernet-to-Fast Ethernet switch
DLSSM-S**	MultiSwitch 600 Stack Director
DLSSU-U**	MultiSwitch 600 Stack Station

** AA – US, Canada, Japan; AD – Denmark; AE – UK; AI – Italy; AK – Switzerland; AT – Israel; AX – central Europe; AZ – Australia; BJ – India, South Africa.

Modular Media Options

DIGITAL Part Number	Description
DLXTX-MA	100BaseTX MMI
DLXFX-MA	100BaseFX MMI
DLXFL-MA	10BaseFL MMI

For more information

For more information about DIGITAL's MultiSwitch 612EX and our complete family of network products, or for the name of the DIGITAL reseller nearest you, call 800-457-8211 in the United States only; worldwide, Fax +1 508-392-0605.

Visit us on the World Wide Web:

US	http://www.networks.digital.com
Europe	http://www.networks.europe.digital.com
Australia	http://www.digital.com.au/networks
Japan	http://www.dec-j.co.jp/ic/network

Printed in U.S.A. EC-F7243-42 Rel.# XXX/97 01 27 x.x Copyright 1997 Digital Equipment Corporation. All Rights Reserved.



DIGITAL believes that the information in this publication is accurate as of its publication date; such information is subject to change without notice. DIGITAL is not responsible for any inadvertent errors.

DIGITAL conducts its business in a manner that conserves the environment and protects the safety and health of its employees, customers, and the community.

DIGITAL, the DIGITAL logo, DEChub, and MultiSwitch are trademarks of Digital Equipment Corporation.