



Compaq Batch Scheduler for Windows NT

Bringing Mainframe-Caliber Automated
Job Scheduling to Windows NT

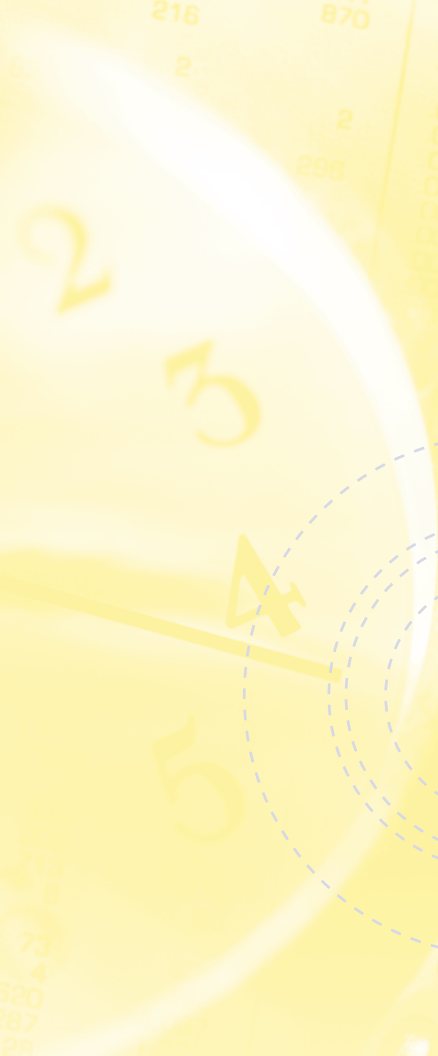
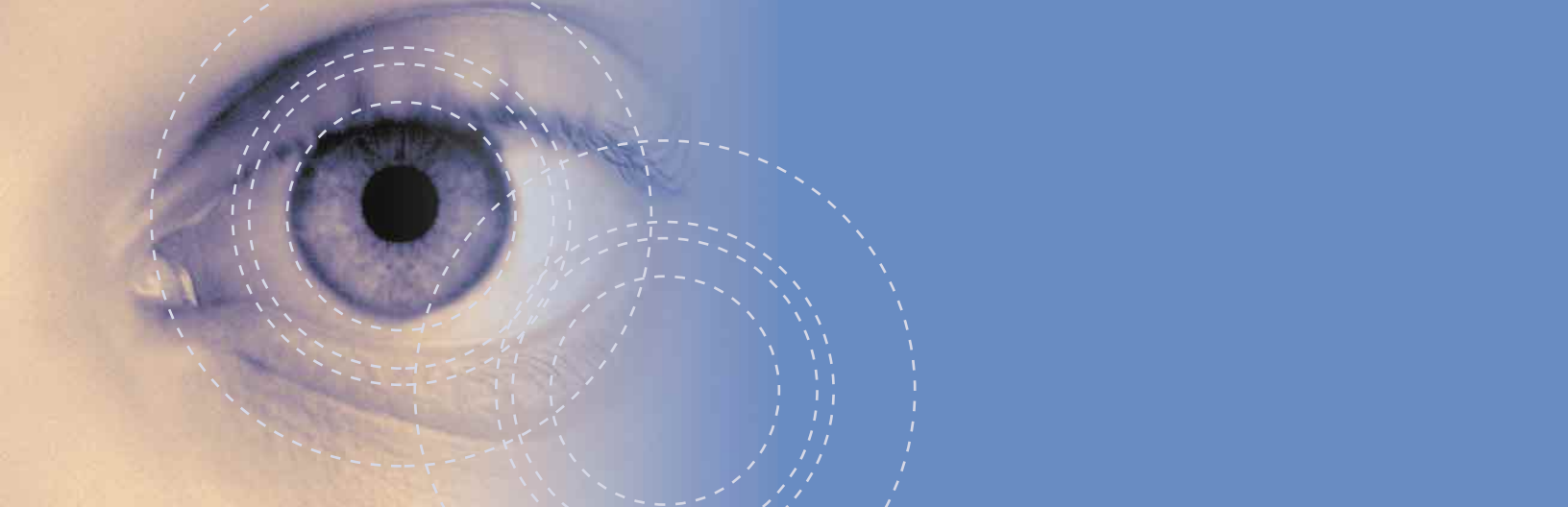
As you move to Windows NT enterprise-wide, much of the business-critical processing that happened on the mainframe is now being handled on Windows NT. Often this processing is repetitive and labor-intensive. And because your computers are widely distributed, many of these activities require manual intervention at multiple sites. *Compaq Batch Scheduler for Windows NT* software — the premier batch processor for the Windows NT environment — addresses these issues with an enterprise job scheduler that offers mainframe-caliber automated processing. Best of all, it's totally visual!

Benefits at a glance:

- Provides an easy-to-use graphical user interface
 - *Drag-and-drop functionality for scheduling*
 - *Fully visual scripting tool for batch job creation*
- Creates schedules of jobs that launch automatically at defined times
 - *Saves labor costs: overall, at night, at remote sites*
 - *Fully utilizes existing computer resources*
- Designed for and fully integrated with Windows NT®
 - *Utilizes NT security model, or alternative Compaq Batch Scheduler security model*
 - *“Designed for BackOffice” logo certified*
- Supports multiplatform environments
 - *Launches jobs from Windows NT or Windows 98®*
 - *Runs jobs on Windows®, UNIX®, or OpenVMS™ operating systems*
 - *SNMP Traps to Tivoli® and HP® OpenView®*

COMPAQ

Better answers



Optimizes system resources

Compaq Batch Scheduler software is an enterprise job scheduler that brings mainframe-level automated processing to the Windows NT environment. By automating job scheduling, it allows you to gain control of computer resources — utilizing them to the fullest, 24 hours a day — without manual intervention. You can easily create schedules of jobs to launch automatically at defined times. You can also create dependencies between jobs, so that one job doesn't launch until another has finished, or until some other condition has been met. *Compaq Batch Scheduler* software provides easy job monitoring, so that you can quickly see which jobs have completed and which ones are still in progress.

Reduces time and training

Compaq Batch Scheduler software has an easy-to-use graphical user interface for job scheduling and batch job creation — which significantly reduces your setup time and training for critical personnel. Scheduling is done through the Coordinator, a visual workspace that uses drag-and-drop functions to establish calendars, dependencies, and notifications for both entire schedules and individual processes. Using the graphical calendar, you can set schedules for the entire year with a few simple keystrokes.

The Visual Scripting tool lets you create programs using pictures instead of text. And you can store the resulting functions in a catalog and reuse them in schedules and other programs. Because the Visual Script is fully and truly visual — you can create programs without writing a line of code. The Visual Script catalog contains more than 200 assembled functions, such as opening and closing directories, that you can use immediately to build programs. You can then run these programs as batch jobs using the Coordinator.

“The Compaq Batch Scheduler offers a broad span of capabilities that really provide the Windows NT environment with enterprise-class batch scheduling. By offering the Compaq Batch Scheduler for Windows NT as a part of our DL Publisher application, we are providing our customers with the batch scheduling functionality they have been accustomed to with other enterprise-class operating systems, while allowing them to take advantage of the Windows NT environment.”

James McNeill
President of DataLogic Inc.

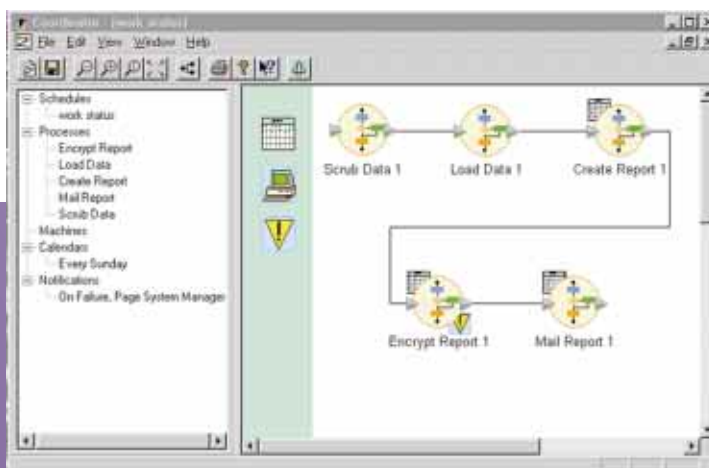
Delivers advanced batch processing

Compaq Batch Scheduler software offers sophisticated scheduling capabilities and gives you flexible control over your computing tasks and resources, including:

- Ability to set up and manage all scheduling centrally
- Extensive scheduling parameters
- Capability to set up complex dependencies between jobs
- Queuing of jobs on assigned, first-available, or most-available machines

Provides a single point of control

With Compaq Batch Scheduler software, you gain flexible control over all of the resources in your Windows NT environment. To provide load balancing, you can organize multiple machines into a single working environment for schedule or job executions. And to protect your critical data, Compaq Batch Scheduler software fully implements all Windows NT security features.



Coordinator, the visual tool that lets you schedule jobs graphically, offers drag-and-drop simplicity.

Batch Scheduler software components:

The **Automated Process Scheduler**, or APS, is the engine that launches all of the schedules.

The **Sentinel** runs on every computer that executes schedules or jobs.

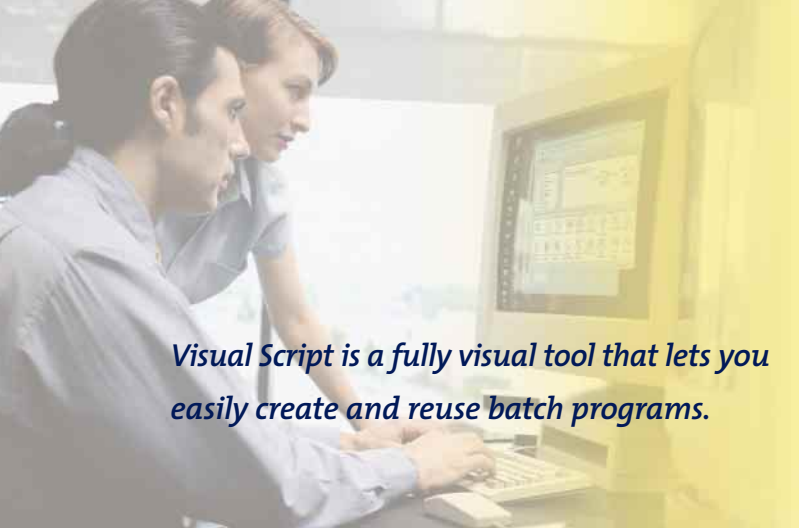
The **Administrator** provides tools for the network administrator to configure the APS, define users and set user privileges, create machine lists and classes, and define business calendars and calendar templates.

The **Monitor** provides the window for monitoring jobs and schedules.

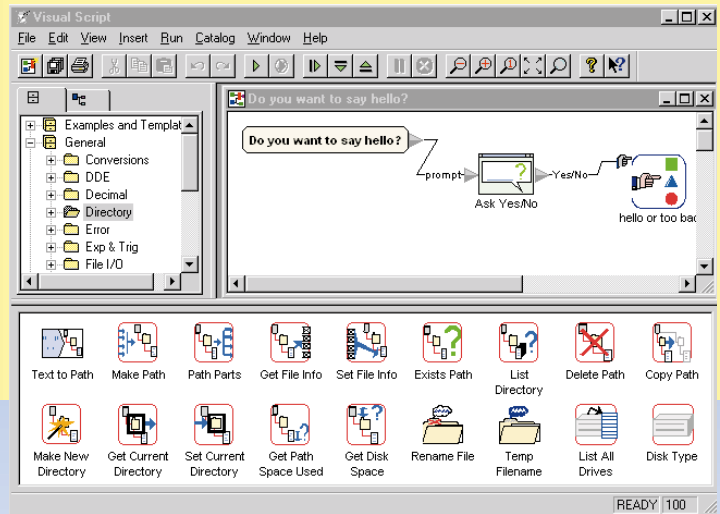
The **Coordinator** is the visual tool for graphically scheduling jobs with drag-and-drop simplicity.

The **Visual Script**, a software development environment with an object-oriented foundation, is a fully visual tool that lets you easily create and reuse batch programs.

Each license grants the right to use either the APS or Sentinel. In addition, you may use the Administrator, Monitor, Coordinator, and Visual Script components on any number of systems in conjunction with the APS or Sentinel.



Visual Script is a fully visual tool that lets you easily create and reuse batch programs.



System requirements (for Y2K readiness)

Software:

Microsoft® Windows 98 or Windows NT Workstation/Server 4.0 (Service Pack 4 or later)

Hardware:

System minimum: Pentium®/100MHz; recommended for APS or Sentinel: Pentium 400MHz or *Compaq Alpha* system

Memory minimum: 32MB for Monitor (128MB recommended), 64MB for APS or Sentinel (128MB recommended)

Color SVGA monitor (800 x 600 minimum)

Windows-compatible mouse

Printer optional

Sentinel:

HP-UX® 11, Sun® Solaris® 2.6, IBM® AIX® 4.3, *Compaq Tru64 UNIX OS* 4.0, *Compaq OpenVMS OS* V6.2, V7.1, and V7.2 for both *Compaq VAX* and *Alpha* systems

Global 24 x 365 service and support

Compaq delivers consistent, quality services around the world. We have local service offices in more than 100 countries for the support of global environments. Compaq Services is one of the largest, most comprehensive services organizations in the world — with the strength of 29,000 employees and 30,000 partners worldwide and 29 Microsoft Authorized Support Centers — to meet your needs. As Microsoft's worldwide prime integrator, Compaq has the world's largest Windows NT certified workforce in the world.

Right To New Version (RTNV) and telephone support services are available for *Compaq Batch Scheduler* software. Gold, Silver, and Bronze service options are available in the optional NT Software Support Plan.

Take the next step

To learn more about *Compaq Batch Scheduler for Windows NT* software, please contact your local Compaq Sales Representative, Authorized Compaq Reseller, or call 1-800-344-4825.

Or visit our Web site:

www.compaq.com/products/software/ntenterprise

COMPAQ

Designed for

